

Product datasheet for **RG215601**

MUPCDH (CDHR5) (NM_021924) Human Tagged ORF Clone

Product data:

Product Type:	Expression Plasmids
Product Name:	MUPCDH (CDHR5) (NM_021924) Human Tagged ORF Clone
Tag:	TurboGFP
Symbol:	CDHR5
Synonyms:	MLPCDH; MU-PCDH; MUCDHL; MUPCDH
Mammalian Cell Selection:	Neomycin
Vector:	pCMV6-AC-GFP (PS100010)
E. coli Selection:	Ampicillin (100 ug/mL)



[View online »](#)

ORF Nucleotide Sequence:

>RG215601 representing NM_021924
 Red=Cloning site Blue=ORF Green=Tags(s)

TTTTGTAATACGACTCACTATAGGGCGGCCGGGAATTCGTCGACTGGATCCGGTACCGAGGAGATCTGCC
 GCC**CGGATCGCC**

ATGGGGTCTTGGGCCCTGCTGTGGCCTCCCTGCTGTTACACGGGCTGCTCGTCCGACCCCCGGGACCA
 TGGCCCAGGCCAGTACTGCTCTGTGAACAAGGACATCTTTGAAGTAGAGGAGAACAACAATGTCACCGA
 GCCGCTGGTGGACATCCACGTCCCGGAGGGCCAGGAGGTGACCCTCGGAGCCTTGTCCACCCCTTTGCA
 TTTCCGATCCAGGGAAACCAGCTGTTTCTCAACGTGACTCCTGATTACGAGGAGAAGTCACTGCTTGAGG
 CTCAGCTGCTGTGTGAGAGCGGAGGCACATTGGTGACCCAGCTAAGGGTGTTCGTGTGCTGCTGGACGT
 CAATGACAATGCCCCGAATCCCTTTAAGACCAAGGAGATAAGGGTGGAGGAGACACGAAAGTGAAC
 TCCACCGTCATCCCCGAGACGAACTGCAGGCTGAGGACCGGACAAGGACGACATTCTGTTCTACACCC
 TCCAGGAAATGACAGCAGGTGCCAGTACTTCTCCCTGGTGAGTGTAAACCGTCCCGCCTGAGGCT
 GGACCGGCCCTGGACTTCTACGAGCGGCCGAACATGACCTTCTGGCTGCTGGTGGGGACACTCCGGGG
 GAGAATGTGGAACCCAGCCACACTGCCACCGCCACACTAGTGCTGAACGTGGTCCCGCCGACCTGCCGC
 CCCCCTGGTTCCTGCCCTGCACCTTCTCAGATGGCTACGTCTGCATTCAAGCTCAGTACCACGGGGCTGT
 CCCCACGGGGCACATACTGCCATCTCCCTCGTCTGCGTCCCGACCCATCTACGCTGAGGACGGAGAC
 CGCGGCATCAACCAGCCCATCTACAGCATCTTAGGGGAAACGTGAATGGTACATTCATCATCCACC
 CAGACTCGGGCAACCTCACCGTGGCCAGGAGTGTCCAGCCCATGACCTTCTTCTGCTGGTGAAGGG
 CCAACAGGCCGACCTTGGCCGCTACTCAGTGACCCAGGTACCGTGGAGGCTGTGGCTGCCGCCGGGAGC
 CCGCCCCGCTTCCCCAGAGCCTGTATCGTGGCACCGTGGCGCTGGCGCTGGAGCGGGCTTGTGGTCA
 AGGATGCAGCTGCCCTTCTCAGCCTTGAGGATCCAGGCTCAGGACCCGGAGTTCTCGGACCTCAACT
 GGCCATCACATATCGAATTACCAACCACTCACACTTCCGGATGGAGGGAGAGGTTGTGCTGACCACCACC
 ACACTGGCACAGGCGGGAGCCTTCTACGACAGGTTGAGGCCACAACACGGTGACCTCTGGCACCGCAA
 CCACAGTCATTGAGATACAAGTTTCCGAACAGGAGCCCCCTCCACAGATGTCCCCCATCCCCAGAGGC
 TGGAGGAACAACGGGCCCTGGACCAGCACCACTTCCGAGGTCCCGAGACCCCTGAGCCCTCCCAGGGA
 CCCTCCACGACCAGCTCTGGGGAGGCACAGGCCCTCATCCACCTCTGGCACAACCTGAGGGCCACCAA
 CCTCGTCCACACCCGGGGGTCCCCGGGTGCAGAAAACAGCACCTCCACCAACCAGCCACTCCCGGTGG
 GGACACAGCACAGACCCAAAGCCAGGAACCTCTCAGCCGATGCCCCCGGTGTGGGAACCAGCACCTCC
 CACCAACCAGCCACACCCAGTGGGGCACAGTACAGACCCAGAGCCAGGAACCTCTCAGCCGATGCCCC
 CAGTATGGGAACCAGCACCTCCACCAACCAGCCACACCCGGTGGGGGCACAGCACAGACCCAGAGGC
 AGGAACCTCTCAGCCGATGCCCCCGGTATGGGAACCAGCACCTCCACCAACCAACCACACCCGGTGGG
 GGCACAGCACAGACCCAGAGCCAGGAACCTCTCAGCCGATGCCCTCAGCAAGAGCACCCCATCTTCAG
 GTGGCGGCCCTCGGAGGACAAGCGCTTCTCGGTGGTGGATATGGCGGCCCTGGGCGGGGTGCTGGGTGC
 GCTGCTGCTGCTGGCTCTCCTGGCCTCGCCGCTCTTGTCCACAAGCACTATGGCCCCGGCTCAAGTGC
 TGCTCTGGCAAAGCTCCGGAGCCCCAGCCCCAAGGCTTTGACAACCAGGCGTTCTCCCTGACCACAAGG
 CCAACTGGGCGCCGTCCCCAGCCCCACGACGACCCCAAGCCCGGAGGCACCGATGCCCGCAGAGCC
 CGCACCCCGGCCCTGCCTCCCAGGCGGTGCCCTGAGCCCCCGCAGCGGCCGAGCTGGCGGAAGC
 CCCACGGCGGTGAGGTCCATCCTGACCAAGGAGCGGCCAGAGGGCGGGTACAAGGCTGTCTGGTTTG
 GCGAGGACATCGGGACGGAGGCAGAGCTGGTCTTCTAACGCGCCACCTGGACGTGGATGGCGCCAG
 TGACTCCGGCAGCGCGATGAGGGCAGGGCGCGGGGAGGGGTGGGGTCCCTACGATGCCCCCGTGGT
 GATGACTCCTACATC

ACGCGTACGCGGCCGCTCGAG – GFP Tag – GTTTAA

Protein Sequence: >RG215601 representing NM_021924
Red=Cloning site Green=Tags(s)

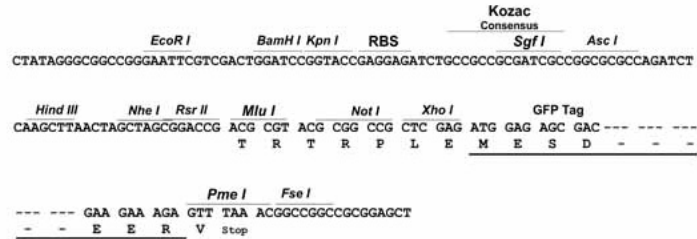
MGSWALLWPELLFTGLLVRPPGTMAQAQYCSVNKDI FEVEENTNVTEPLVDIHVPEGQEVTLGALSTPFA
FRIQGNQLFLNVTPDYEEKSLLEAQLLCQSGGTLVTLQRLVSVLDVNDNAPEFPFKTKEIRVEEDTKVN
STVIPETQLQAEDRDKDDILFYTLQEMTAGASDYFSLVSVNRPALRLDRPLDFYERPNMTFWLLVRDTPG
ENVESHTATATLVLNVPADLRPPWFLPCTFSDGYVCIQAQYHGAVPTGHILPSPLVLRPGPIYAEDGD
RGINQPIIYSIFRGNVNGTFIIHPDSGNLTVARSVSPMTFLLL VKGQQADLARYSVTQVTVEAVAAAGS
PPRFPQSLYRGTVARGAGAGVVVKDAAAPSQPLRIQAQDPEFSDLNSAITYRITNHSFRMEGEVVLTTT
TLAQAGAFYAEVEAHNTVTS GTATTVIEIQVSEQEPPSTDVPPSPEAGGTTGPWTSTTSEVPRPPEPSQG
PSTTSSGGGTGPHPPSGTTLRPPTSSTPGGSPGAENSTSHQPATPGGDTAQT PKPGTSQPMPPGVTST
HQPATPSGGTVQTPEPGTSQPMPPSMGTSTSHQPATPGGGTAQTPEAGTSQPMPPGMTSTSHQPTTPGG
GTAQTPEPGTSQPMPLSKSTPSSGGGSEDKRF SVVDMAALGGVLGALLLALLGLAVLVHKHYGPRLKC
CSGKAPEPQPQGF DNQAF LPDH KANWAPVPSPTHDPKPAEAPMPAEPAPPGPASPGGAPEPPAAARAGGS
PTAVRSILTKERRPEGGYKAVWFGEDIGTEADVVLNAPTLDVDGASDSGSGDEGEGAGRGGGYPDAPGG
DDSYI

TRTRPLE - GFP Tag - V

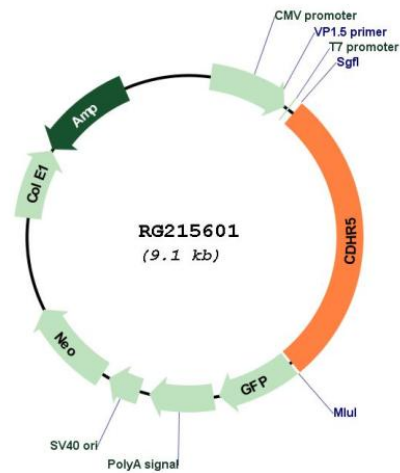
Restriction Sites: Sgfl-Mlul

Cloning Scheme:

Cloning sites used for ORF Shutting:



Plasmid Map:



ACCN:	NM_021924
ORF Size:	2535 bp
OTI Disclaimer:	The molecular sequence of this clone aligns with the gene accession number as a point of reference only. However, individual transcript sequences of the same gene can differ through naturally occurring variations (e.g. polymorphisms), each with its own valid existence. This clone is substantially in agreement with the reference, but a complete review of all prevailing variants is recommended prior to use. More info
OTI Annotation:	This clone was engineered to express the complete ORF with an expression tag. Expression varies depending on the nature of the gene.
Components:	The ORF clone is ion-exchange column purified and shipped in a 2D barcoded Matrix tube containing 10ug of transfection-ready, dried plasmid DNA (reconstitute with 100 ul of water).
Reconstitution Method:	<ol style="list-style-type: none">1. Centrifuge at 5,000xg for 5min.2. Carefully open the tube and add 100ul of sterile water to dissolve the DNA.3. Close the tube and incubate for 10 minutes at room temperature.4. Briefly vortex the tube and then do a quick spin (less than 5000xg) to concentrate the liquid at the bottom.5. Store the suspended plasmid at -20°C. The DNA is stable for at least one year from date of shipping when stored at -20°C.
RefSeq:	NM_021924.2 , NP_068743.1
RefSeq Size:	2973 bp
RefSeq ORF:	2538 bp
Locus ID:	53841
UniProt ID:	Q9HBB8
Cytogenetics:	11p15.5
Protein Families:	Transmembrane
Gene Summary:	This gene is a novel mucin-like gene that is a member of the cadherin superfamily. While encoding nonpolymorphic tandem repeats rich in proline, serine and threonine similar to mucin proteins, the gene also contains sequence encoding calcium-binding motifs found in all cadherins. The role of the hybrid extracellular region and the specific function of this protein have not yet been determined. Alternatively spliced transcript variants encoding different isoforms have been described. [provided by RefSeq, Jan 2010]