

Product datasheet for **RG215547**

KIAA1199 (CEMIP) (NM_018689) Human Tagged ORF Clone

Product data:

| | |
|---------------------------|---|
| Product Type: | Expression Plasmids |
| Product Name: | KIAA1199 (CEMIP) (NM_018689) Human Tagged ORF Clone |
| Tag: | TurboGFP |
| Symbol: | KIAA1199 |
| Synonyms: | CCSP1; HYBID; KIAA1199; TMEM2L |
| Mammalian Cell Selection: | Neomycin |
| Vector: | pCMV6-AC-GFP (PS100010) |
| E. coli Selection: | Ampicillin (100 ug/mL) |
| ORF Nucleotide Sequence: | >RG215547 representing NM_018689 Red=Cloning site Blue=ORF Green=Tags(s) |

TTTTGTAATACGACTCACTATAGGGCGGCCGGAATTCGTCGACTGGATCCGGTACCGAGGAGATCTGCC
GCC**CGATCGCC**

ATGGGAGCTGCTGGGAGGCAGGACTTCCTCTTCAAGGCCATGCTGACCATCAGCTGGCTCACTCTGACCT
GCTTCCCTGGGGCCACATCCACAGTGGCTGCTGGGTGCCCTGACCAGAGCCCTGAGTTGCAACCCTGGAA
CCCTGGCCATGACCAAGACCACCATGTGCATATCGGCCAGGGCAAGACTGCTGCTCACCTCTTCTGCC
ACGGTCTATTCCATCCACATCTCAGAGGGAGGCAAGCTGGTCATTAAGACCACGACGAGCCGATTGTTT
TGCGAACC CGGCACATCCTGATTGACAACGGAGGAGAGCTGCATGCTGGGAGTGCCTCTGCCCTTTCCA
GGCAATTTACCATCATTTTGTATGGAAGGGCTGATGAAGGTATTCAGCCGGATCCTTACTATGGTCTG
AAGTACATTGGGGTTGGTAAAGGAGGCGCTCTTGAGTTGCATGGACAGAAAAAGCTCCTCGGACATTTT
TGAACAAGACCCTTACCCAGGTGGCATGGCAGAAGGAGGCTATTTTTTTGAAAGGAGCTGGGGCCACCG
TGGAGTTATTGTTTCATGTGCATCGACCCAAATCAGGCACAGTCAATCTGACCGGTTTGACACCTAT
AGATCCAAGAAAGAGAGTGAACGTCTGGTCCAGTATTTGAACGCGGTGCCGATGGCAGGATCCTTTCTG
TTGCAGTGAATGATGAAGTTCTCGAAATCTGGATGACATGGCCAGGAAGGCGATGACCAATTTGGGAAG
CAAACATTCCTGCACCTTGATTTAGACACCCCTTGAGTTTTCTAACTGTGAAAGGAAATCCATCATCT
TCAGTGGAAAGACCATATTGAATATCATGGACATCGAGGCTGCTGCTGCCCGGTTTCAAATTTGTTCC
AGACAGAGCATGGCGAATATTTCAATGTTTCTTTGTCCAGTGAGTGGGTTCAAGACGTGGAGTGGACGGA
GTGGTTTCGATCATGATAAAGTATCTCAGACTAAAGGTGGGGAGAAAAATTCAGACCTCTGAAAAGCTCAC
CCAGGAAAAATGCAATCGTCCCATTGATATACAGGCCACTACAATGGATGGAGTTAACCTCAGCACCG
AGGTTGTCTACAAAAAGGCCAGGATTATAGTTTGTCTGCTACGACCGGGCAGAGCCTGCCGGAGCTA
CCGTGTACGGTTCCTCTGTGGGAAGCCTGTGAGGCCAAACTCACAGTCAACATTGACACCAATGTGAAC
AGCACCATTCTGAACTTGAGGATAATGTACAGTCATGGAACCTGGAGATACCCTGGTTCATTGCCAGTA
CTGATTACTCCATGTACCAGGCAGAAGAGTTCCAGGTGCTTCCCTGCAGATCCTGCGCCCCAACCCAGT
CAAAGTGCAGGAAACCAATGTACCTGCACATCGGGGAGGAGATAGACGCGTGGACATGCGGGCGGAG



[View online »](#)

GTTGGGCTTCTGAGCCGGAACATCATAGTGATGGGGGAGATGGAGGACAAATGCTACCCCTACAGAAACC
ACATCTGCAATTTCTTTGACTTCGATACCTTTGGGGGCCACATCAAGTTTGTCTGGGATTTAAGGCAGC
ACACTTGGAGGGCACGGAGCTGAAGCATATGGGACAGCAGCTGGTGGGTCACTACCCGATCACTTCCAC
CTGGCCGGTGATGTAGACGAAAGGGGAGGTTATGACCCACCCACATACATCAGGGACCTCTCCATCCATC
ATACATTTCTCGCTGCGTCACAGTCCATGGCTCCAATGGCTTGTGATCAAGGACGTTGTGGGCTATAA
CTCTTTGGGCCACTGCTTCTTACGGAAGATGGGCCGGAGGAACGCAACACTTTTGACCCTGTCTTGGC
CTCCTTGTCAAGTCTGGAACCTCTCCCTCGGACCTGACAGCAAGATGTGCAAGATGATCACAGAGG
ACTCCTACCCGGGTACATCCCAAGCCAGGCAAGACTGCAATGCTGTGTCCACCTTCTGGATGGCCAA
TCCCAACAACAACCTCATCAACTGTGCCCTGCAGGATCTGAGGAAACTGGATTTTGGTTTATTTTTTAC
CACGTACCAACGGGCCCTCCGTGGAAATGACTCCCCAGGTTATTAGAGCACATTCCACTGGGAAAAT
TCTATAACAACCGAGCACATTCCAACCTACCGGGCTGGCATGATCATAGACAACGGAGTCAAACCACCGA
GGCCTCTGCCAAGGACAAGCGGCCGTTCTCTCAATCATCTCTGCCAGATACAGCCCTCACCAGGACGCC
GACCCGCTGAAGCCCGGAGCCGCCATCATCAGACACTTATTGCCTACAAGAACCAGGACCACGGGG
CCTGGCTGCGCGCGGGGATGTGTGGCTGGACAGCTGCCGTTTGTGACAATGGCATTGGCCTGACCT
GGCCAGTGGTGAACCTTCCCGTATGACGACGGCTCCAAGCAAGAGATAAAGAACAGCTTGTTTGTGGC
GAGAGTGGCAACGTGGGACGGAATGATGGACAATAGGATCTGGGGCCCTGGCGCTTGGACCATAGCG
GAAGGACCTCCCTATAGGCCAGAATTTCCAATTAGAGGAATTCAGTTATATGATGGCCCCATCAACAT
CCAAAACCTGCACTTTCCGAAAGTTTGTGGCCCTGGAGGGCCGGCACACCAGCGCCCTGGCCTTCCGCTG
AATAATGCCTGGCAGAGCTGCCCCATAAACAACGTGACCGGCAATTGCCTTTGAGGACGTTCCGATTACTT
CCAGAGTGTCTTCGGAGAGCCTGGGCCCTGGTTCAACCAGCTGGACATGGATGGGGATAAGACATCTGT
GTTCCATGACGTGACGGCTCCGTGTCCGAGTACCCTGGCTCCTACCTCACGAAGAATGACAACCTGGCTG
GTCCGGCACCCAGACTGCATCAATGTTCCCGACTGGAGAGGGGCCATTTGCAGTGGGTGCTATGCACAGA
TGTACATTAAGCCTACAAGACCAGTAACCTGCGAATGAAGATCATCAAGAATGACTTCCCAGCCACCC
TCTTTACCTGGAGGGGGCGCTCACCAGGAGCACCCATTACCAGCAATACCAACCGGTTGTACCCTGCAG
AAGGGCTACACCATCCACTGGGACCAGACGGCCCGCGGAACTCGCCATCTGGCTCATCAACTCAACA
AGGGCGACTGGATCCGAGTGGGGCTCTGCTACCCGCGAGGACACCACATTCTCCATCCTCTCGGATGTTCA
CAATCGCCTGCTGAAGCAAACGTCCAAGACGGGCGTCTTCGTGAGGACCTTGAGATGGACAAAAGTGGAG
CAGAGCTACCCTGGCAGGAGCCACTACTACTGGGACGAGGACTCAGGGCTGTTGTTTCTGAAGCTGAAAG
CTCAGAACGAGAGAGAGAAGTTTGCTTTCTGCTCCATGAAAGGCTGTGAGAGGATAAAGATTAAGCTCT
GATTCAAAAGAACGCAGGCGTCAGTACTGCACAGCCACAGCTTACCCCAAGTTCACCGAGAGGGCTGTC
GTAGACGTGCCGATGCCAAGAAGCTTTTGGTTCTCAGCTGAAAACAAAGGACATTTCTTGGAGGTGA
AGATGGAGAGTTCCAAGCAGCACTTCTCCACCTCTGGAACGACTTCGCTTACATTGAAGTGGATGGGAA
GAAGTACCCAGTTCCGAGGATGGCATCCAGGTGGTGGTATTGACGGGAACCAAGGGCGCGTGGTGGAGC
CACACGAGCTTACGAACTCCATTCTGCAAGGCATACCATGGCAGCTTTTCAACTATGTGGCGACCATCC
CTGACAATTCCATAGTGCTTATGGCATCAAAGGGAAGTACGTCTCCAGAGGCCCATGGACCAGAGTGCT
GGAAAAGCTTGGGGCAGACAGGGGTCTCAAGTTGAAAGAGCAAATGGCATTGCTTGGCTTCAAAGGCAGC
TTCCGGCCCATCTGGGTGACACTGGACACTGAGGATCACAAGCCAAAATCTTCCAAGTTGTGCCATCC
CTGTGGTGAAGAAGAAGAAGTTG

ACGCGTACGCGGCCGCTCGAG - GFP Tag - GTTTAA

Protein Sequence: >RG215547 representing NM_018689
 Red=Cloning site Green=Tags(s)

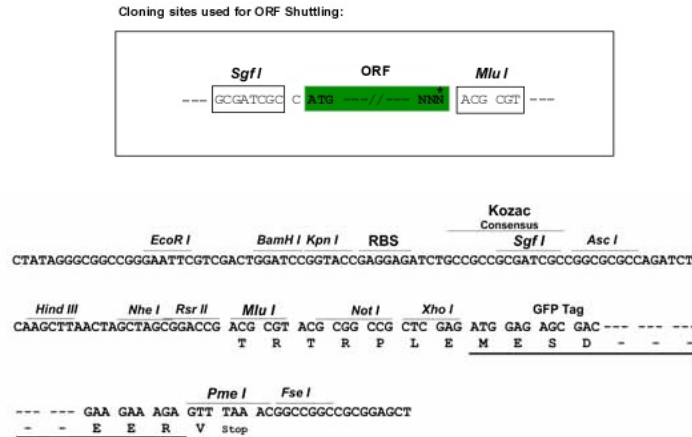
```
MGAAGRQDFLFKAMLTISWLTLCFPGATSTVAAGCPDQSPQLPWNPGHDQDHHVHIGQGKTLTSSA
TVYSIHIHSEGGKLVIKDHDEPIVLRTRHILIDNGGELHAGSALCPFQGNFTIILYGRADEGIQDPYYGL
KYIGVGKGGALELHGQKLSWTFNLKTLHPGGMAEGGYFFERSWGHGRGVIHVVIDPKSGTVIHSDFDITY
RSKKESERLVQYLNAVDPGRILSVAVNDEGSRNLDDMARKAMTKLGSKHFLHLGFRHPWSFLT VKGNPSS
SVEDHIEYHGHRGSAARVFKLFQTEHGEYFNVLSSEWVQDVEWTEWFDHDKVVSQTKGGEKISDLWKAH
PGKICNRPIDIQAATTMDGVNLSTEVVYKKGQDYRFACYDRGRACRSYRVRF LCGKPVRPKLTVTIDTNVN
STILNLEDNVQSWKPGDTLVIASDYSMYQAEFQVLPSCRSCAPNQVKVAGKPMYLIHIGEEIDGVMRAE
VGLLSRNIIVMGEMEDKCPYRNHICNFFDFDTFGGHKIFALGFKAAHLEGTELKHMGGQLVQGYPIHFH
LAGDVDERGGYDPPTYIRDLSIHHTFSRCVTVHGSNGLLIKDVVGYNSLGHCFEEDGPEERNTFDHCLG
LLVKSGTLLPSDRDSKMCKMITEDSYGPIPKPRQDCNAVSTFWMANPNNLINCAAAGSEETGFWFIFH
HVPTGPSVGMSPGYSEHIPLGKFYNNRAHSNYRAGMIIDNGVKTEASAKDKRPFLLSIISARYSPHQDA
DPLKPREPAIIRHFIA YKNQDHGAWLRGGDVWLDSCRFA DNGIGLTLASGGTFPYDDGSKQEIKNSL FVG
ESGNVGTMMDNRIWGPGLDHSRRTLPIGQNFPIRGIQLYDGPINIQNCTFRKFALEGRHTSALAFRL
NNAWQSCPHNNVTGIAFEDVPITSRVFFGEPGPFNQLDMDGDKTSVFHDV DGSVSEYPGSLTKNDNLW
VRHPDCINVPDWGAICSGCYAQMYIQAYKTSNLRMKI IKNDFPSHPLYLEGALTRSTHYQQYQPVVTLQ
KGYTIHWDQTAPELAIWLINFNKGDWIRVGLCYPRGTTFSILSDVHNRLKQTSKTVGFVRTLQMDKVE
QSYPGRSHYYWDEDSGLLFLKKAQNEREKFAFCSMKGCERIKIKALIPKNAGVSDCTATAYPKFTEAV
VDVPMPPKLLFGSQLKTKDHFLEVKMESSKQHFHFLWDFAYIEVDGKKYPSSEDDGIQVVVIDGNQGRVVS
HTSFRNSILQGIPWQLFNYYVATIPDNSIVL MASKGRYVSRGPWTRVLEKLGADRGLK LKEQMAFVGFKGS
FRPIWVTLDTEDHKAKIFQVVPVIVVKKKLL
```

TRTRPLE - GFP Tag - V

Chromatograms: https://cdn.origene.com/chromatograms/ja2445_e06.zip

Restriction Sites: SgfI-MluI

Cloning Scheme:

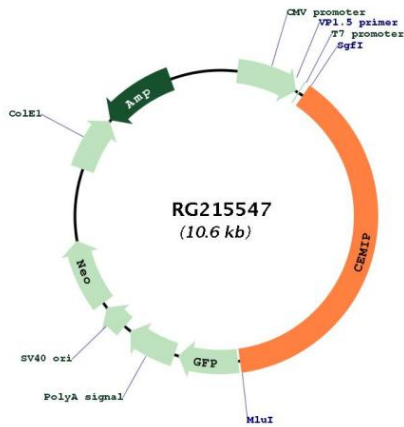


ACCN: NM_018689

ORF Size: 4083 bp

| | |
|-------------------------------|--|
| OTI Disclaimer: | <p>Due to the inherent nature of this plasmid, standard methods to replicate additional amounts of DNA in E. coli are highly likely to result in mutations and/or rearrangements. Therefore, OriGene does not guarantee the capability to replicate this plasmid DNA. Additional amounts of DNA can be purchased from OriGene with batch-specific, full-sequence verification at a reduced cost. Please contact our customer care team at custsupport@origene.com or by calling 301.340.3188 option 3 for pricing and delivery.</p> <p>The molecular sequence of this clone aligns with the gene accession number as a point of reference only. However, individual transcript sequences of the same gene can differ through naturally occurring variations (e.g. polymorphisms), each with its own valid existence. This clone is substantially in agreement with the reference, but a complete review of all prevailing variants is recommended prior to use. More info</p> |
| OTI Annotation: | <p>This clone was engineered to express the complete ORF with an expression tag. Expression varies depending on the nature of the gene.</p> |
| Components: | <p>The ORF clone is ion-exchange column purified and shipped in a 2D barcoded Matrix tube containing 10ug of transfection-ready, dried plasmid DNA (reconstitute with 100 ul of water).</p> |
| Reconstitution Method: | <ol style="list-style-type: none">1. Centrifuge at 5,000xg for 5min.2. Carefully open the tube and add 100ul of sterile water to dissolve the DNA.3. Close the tube and incubate for 10 minutes at room temperature.4. Briefly vortex the tube and then do a quick spin (less than 5000xg) to concentrate the liquid at the bottom.5. Store the suspended plasmid at -20°C. The DNA is stable for at least one year from date of shipping when stored at -20°C. |
| RefSeq: | NM_018689.3 |
| RefSeq Size: | 7128 bp |
| RefSeq ORF: | 4086 bp |
| Locus ID: | 57214 |
| UniProt ID: | Q8WUJ3 |
| Cytogenetics: | 15q25.1 |
| Gene Summary: | <p>Mediates depolymerization of hyaluronic acid (HA) via the cell membrane-associated clathrin-coated pit endocytic pathway. Binds to hyaluronic acid. Hydrolyzes high molecular weight hyaluronic acid to produce an intermediate-sized product, a process that may occur through rapid vesicle endocytosis and recycling without intracytoplasmic accumulation or digestion in lysosomes. Involved in hyaluronan catabolism in the dermis of the skin and arthritic synovium. Positively regulates epithelial-mesenchymal transition (EMT), and hence tumor cell growth, invasion and cancer dissemination. In collaboration with HSPA5/BIP, promotes cancer cell migration in a calcium and PKC-dependent manner. May be involved in hearing. [UniProtKB/Swiss-Prot Function]</p> |

Product images:



Circular map for RG215547