

## Product datasheet for **RG215532**

### USP48 (NM\_032236) Human Tagged ORF Clone

#### Product data:

Product Type:	Expression Plasmids
Product Name:	USP48 (NM_032236) Human Tagged ORF Clone
Tag:	TurboGFP
Symbol:	USP48
Synonyms:	RAP1GA1; USP31
Mammalian Cell Selection:	Neomycin
Vector:	pCMV6-AC-GFP (PS100010)
E. coli Selection:	Ampicillin (100 ug/mL)
ORF Nucleotide Sequence:	>RG215532 representing NM_032236 Red=Cloning site Blue=ORF Green=Tags(s)

TTTTGTAATACGACTCACTATAGGGCGGCCGGAATTCGTCGACTGGATCCGGTACCGAGGAGATCTGCC  
GCC**CGATCGCC**

ATGGCCCCGGCTGCAGCTGGAGAAGCGGCCTGGCGCTGGGCGGAGACGGTGC GGCCCCGAGGAGGTGT  
CGCAGGAGCACATCGAGACCGCTTACCGCATCTGGCTGGAGCCCTGCATTGCGGGCGTGTGCAGACGAAA  
CTGCAAAGGAAATCCGAATTGCTTGGTTGGTATTGGTGAGCATATTTGGTAGGAGAAATAGATGAAAAT  
AGTTTTTCATAACATCGATGATCCCAACTGTGAGAGGAGAAAAAAGAACTATTTGTGGCCCTGACTAACC  
TTGGAGCCACTTGTATGTCAACACATTTCTTCAAGTGTGGTTTCTCACTTGGAGCTTCGGCAGGCACT  
CTACTTATGTCCAAGCACTTGTAGTGACTACATGCTGGGAGACGGCATCCAAGAAGAAAAAGATTATGAG  
CCTCAAACAATTTGTGAGCATCTCCAGTACTTGTTCCTTGTGCAAAAACAGTAATAGGCGATACATTG  
ATCCATCAGGATTTGTTAAAGCCTTGGCCCTGGACACTGGACAACAGCAGGATGCTCAAGAATTTTCAA  
GCTCTTTATGTCTCTATTGGAAGATACTTTGTCTAAACAAAAGAATCCAGATGTGCGCAATATTGTTCAA  
CAGCAGTTCTGTGGAGAATATGCCTATGTAAGTGTTCGAACCAAGTGTGGCAGAGAGTCTAAGCTTTTGT  
CAAAATTTTATGAGCTGGAGTTAAATATCCAAGGCCACAACAGTTAACAGATTGATCTCGGAATTTT  
GAAGGAAGAAAAATTAGAAGGAGACAATCGCTATTTTTGCGAGAAGTGTCAAAGCAAACAGAATGCAACA  
AGAAAGATTCGACTTCTTAGCCTTCCTTGCACTGAAGTGTGAGCTAATGCGTTTTGTCTTTGACAGCG  
AAACTGGACATAAGAAAAAGCTGAATACCTACATTGGCTTCTCAGAAATTTGGATATGGAGCCTTATGT  
GGAACATAAAGGTGGTCTACGTGTATGAACTCAGCGCAGTCCATACACAGAGGAGTGAAGTCTTAT  
TCTGGCCACTACATCGCCACCGTAAAGATCCACAGTCTGGTGAATGGTATAAGTTAATGATGAAGACA  
TAGAAAAGATGGAGGGGAAGAAATTACAAGTGGGATTGAGGAAGATCTAGCAGAACCTTCTAAGTCTCA  
GACACGTAACCCAAAGTGTGGCAAAGAACTCATTGCTCTCGAAATGCATATATGTTGGTTTATAGACTG  
CAAAGTCAAGAAAAGCCCAACTACTGTTCAAGTCCAGCTTTCTTCAAGAGCTGGTAGACTCGGGATA  
ATTCAAAATTTGAGGAGTGGTATTGAAATGGCTGAGATGCGTAAGCAAAGTGTGGATAAAGGAAAAGC  
AAAACACGAAGAGTTAAGGAGCTGTACCAAAGTTACCTGCTGGAGCTGAGCCCTATGAGTTTGTCTCT



[View online »](#)

CTGGAATGGCTGCAAAAGTGGTTGGATGAATCAACACCTACCAAACCTATTGATAATCACGCTTGCCTGT  
 GTTCCCATGACAAGCTTACCCGGATAAAAATATCAATTATGAAGAGGATATCTGAATATGCAGCTGACAT  
 TTTCTATAGTAGATATGGAGGAGGTCCAAGACTAACTGTGAAAGCCCTGTGTAAGGAATGTGTAGTAGAA  
 CGTTGTCGCATATTGCGTCTGAAGAACCACTAAATGAAGATTATAAACTGTTAATAATCTGCTGAAAG  
 CAGCAGTAAAGGGCAGCGATGGATTTTGGGTGGGAAGTCTCCTTGGGAGTTGGCCAGCTAGCTCT  
 TGAACAGCTGGATGAGCAAGATGGTGATGCAGAACAAGCAACGAAAGATGAACGGTAGCACCTAAAT  
 AAAGTGAATCAAAGGAAGAAAAGAAAAGAGGAGGAATTAATTTTAAATGAAGATATTCTGTGCCAC  
 ATGGTGAGTTATGCATATCTGAAAATGAAAGAAGGCTTGTCTTAAAGAGGCTTGGAGCAAACCTGCAGCA  
 GTACTTTCCAAGGCTCCTGAGTTTCCAAGTTACAAAGAGTGCTGTTTACAGTGCAAGATTTTAGAAAGA  
 GAAGGGGAAGAAAATGAAGCCTTACATAAGATGATTGCAAACGAGCAAAAGACTTCTCTCCCAAATTTGT  
 TCCAGGATAAAAAACAGACCGTGTCTCAGTAAGTGGCCAGAGGATACGGATGCTCTACATCGTGTCTCA  
 GTTCTTTGTAGAAGAGTGGCGGAAATTTGTTAGAAAGCCTACAAGATGCAGCCCTGTGCATCAGTTGGG  
 AACAGTGTCTTTTGTGTCCCACGGGGCCTCATGTTTACATTTGCTTCCATGACCAAAGAAGATTCTA  
 AACTTATAGCTCTCATATGGCCAGTGAAGTGGCAATGATACAAAAGCTCTTTGTTGGATCATGTAAT  
 TAAAATCACGAGAATTGAAGTGGGAGATGTAACCCTTCAGAAACACAGTATATTCTGAGCCCAAACCTC  
 TGTCAGAAATGCAGAGAAGGCTTATTGTGTCAGCAGCAGAGGGACCTGCGTGAATACACTCAAGCCACCA  
 TCTATGTCATAAAGTTGTGGATAATAAAAAGGTGATGAAGGATTCGGCTCCGGAACCTGAATGTGAGTAG  
 TTCTGAAACAGAGGAGGACAAGGAAGAAGCTAAACCAGATGGAGAAAAAGATCCAGATTTTAAATCAAAGC  
 AATGGTGGAAACAAGCGGCAAAAGATACCCATCAAAATATATAGCCTATCAAAGCAAGTTATTCGCC  
 GAAGTATGCGACATAGAAAAGTTCGTGGTGAGAAAAGCACTTCTCGTTTCTGCTAATCAGACGTTAAAAGA  
 ATTTAAAGTATGACTGTGCCACCCTAGGCACCCTTGGCGTCATCTCTGAATCTGTCATTTTATTGAAGG  
 CTGATGAACCAATTGCAGATTATGCTGCAATGGATGATGTCATGCAAGTTGTATGCCAGAAGAAGGTT  
 TAAAGGTACTGGTCTTCTTGACAT

ACGCGTACGCGGCCGCTCGAG - GFP Tag - GTTTAA

**Protein Sequence:**

>RG215532 representing NM\_032236  
 Red=Cloning site Green=Tags(s)

MAPRLQLEKAAWRWAETVRPEEVSQEHIEIETAYRIWLEPCIRGVCRNRNCKGNPNCLVGIGEHILWGEIDEN  
 SFHNIDDPNCERRKNSFVGLTNLGATCYVNTFLQVWFLNLELRQALYLCPSSTCSYMLGDGIQEEKDYE  
 PQTICEHLQYLFALLQNSNRRYIDPSGFVKALGLDTGQQQDAQEF SKLFMSLLEDTL SKQKPNPDVRNIVQ  
 QQFCGEYAYVTVCNQCGRSKLLSKFYELNLIQGHKQLTDCISEFLKEEKLEGNRYFCENCQSKQNAT  
 RKIRLLSLPCTLNQLMRVFVDRQTGHKKLNTYIGFSEILDMEPYVEHKGGSYVYELSAVLIHRGVSAY  
 SGHYIAHVKDPQSGEWYKFNDEDIEKMEGKQLGLIEEDLAEPSKSQTRPKCGKGTGTHCSRNAYMLVYRL  
 QTQEKPNNTVQVPAFLQELVDRDNSKFEWCIEAEMRKQSVDKGKAKHEEVKELYQRLPAGAEPYEFVS  
 LEWLQKWLDESTPTKPIDNHACLCSHDKLHPDKISIMKRISEYAADIFYSRYGGPRLTVKALCKECPVE  
 RCRILRLKNQLNEDYKTVNLLKAAVKGSDGFVWGKSSLRSWRQALAEQLDEQDGAEQSNGKMNGSTLN  
 KDESKERKEEELNFNEDILCPHGELCISENERRLSKEAWSKLQYFPAPEFSPYKECCSQCKILER  
 EGEENEALHKMIANEQKTSLPNLFQDKNRPCLSNWPEDTDVLYIVSQFFVEEWRKRVKRPTRCSPVSSVG  
 NSALLCPHGGLMFTFASMTKEDSKLIALIWPSEWQMIQKLFVVDHVIKITRIEVDVNPSETQYISEPKL  
 CPECREGLLCQQQRDLREYQTATIIYVHKVVDNKKVMKDSAPELNVSSSETEEDKEEAKPDGEKDPDFNQS  
 NGGTRKQKISHQNYIAYQKQVIRRSRMRHRKVRGEKALLVSNQTLKELKIQIMHAFSVAPFDQNL SIDGK  
 ILSDDCATLGLGVIPESVILLKADEPIADYAAMDVMQVCMPEEGFKGTGLLGH

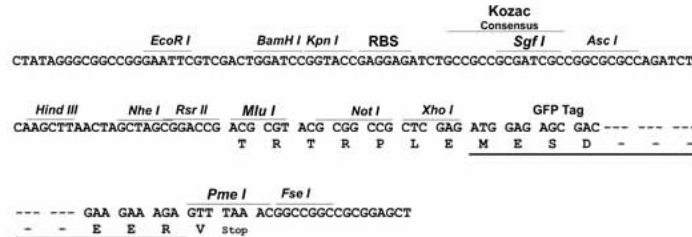
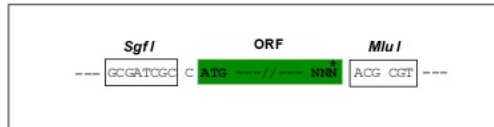
TRTRPLE - GFP Tag - V

**Restriction Sites:**

Sgfl-Mlul

**Cloning Scheme:**

Cloning sites used for ORF Shutting:


**ACCN:** NM\_032236

**ORF Size:** 3105 bp

**OTI Disclaimer:** Due to the inherent nature of this plasmid, standard methods to replicate additional amounts of DNA in *E. coli* are highly likely to result in mutations and/or rearrangements. Therefore, OriGene does not guarantee the capability to replicate this plasmid DNA. Additional amounts of DNA can be purchased from OriGene with batch-specific, full-sequence verification at a reduced cost. Please contact our customer care team at [custsupport@origene.com](mailto:custsupport@origene.com) or by calling 301.340.3188 option 3 for pricing and delivery.

The molecular sequence of this clone aligns with the gene accession number as a point of reference only. However, individual transcript sequences of the same gene can differ through naturally occurring variations (e.g. polymorphisms), each with its own valid existence. This clone is substantially in agreement with the reference, but a complete review of all prevailing variants is recommended prior to use. [More info](#)

**OTI Annotation:** This clone was engineered to express the complete ORF with an expression tag. Expression varies depending on the nature of the gene.

**Components:** The ORF clone is ion-exchange column purified and shipped in a 2D barcoded Matrix tube containing 10ug of transfection-ready, dried plasmid DNA (reconstitute with 100 ul of water).

**Reconstitution Method:**

1. Centrifuge at 5,000xg for 5min.
2. Carefully open the tube and add 100ul of sterile water to dissolve the DNA.
3. Close the tube and incubate for 10 minutes at room temperature.
4. Briefly vortex the tube and then do a quick spin (less than 5000xg) to concentrate the liquid at the bottom.
5. Store the suspended plasmid at -20°C. The DNA is stable for at least one year from date of shipping when stored at -20°C.

**RefSeq:** [NM\\_032236.8](#)

**RefSeq Size:** 4148 bp

**RefSeq ORF:** 3108 bp

**Locus ID:** 84196

**UniProt ID:** [Q86UV5](#)

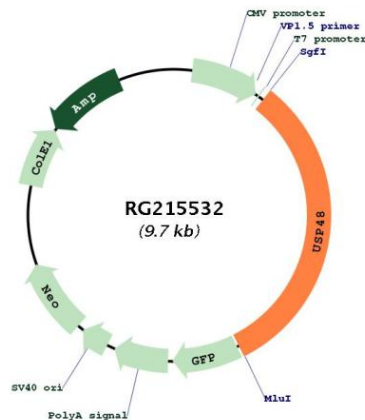
**Cytogenetics:** 1p36.12

**Domains:** UCH

**Protein Families:** Druggable Genome, Protease, Transmembrane

**Gene Summary:** This gene encodes a protein containing domains that associate it with the peptidase family C19, also known as family 2 of ubiquitin carboxyl-terminal hydrolases. Family members function as deubiquitinating enzymes, recognizing and hydrolyzing the peptide bond at the C-terminal glycine of ubiquitin. Enzymes in peptidase family C19 are involved in the processing of poly-ubiquitin precursors as well as that of ubiquitinated proteins. Alternate transcriptional splice variants, encoding different isoforms, have been characterized. [provided by RefSeq, Jul 2008]

### Product images:



Circular map for RG215532