

## Product datasheet for **RG215492**

### TEF1 (TEAD1) (NM\_021961) Human Tagged ORF Clone

#### Product data:

**Product Type:** Expression Plasmids  
**Product Name:** TEF1 (TEAD1) (NM\_021961) Human Tagged ORF Clone  
**Tag:** TurboGFP  
**Symbol:** TEF1  
**Synonyms:** AA; NTEF-1; REF1; TCF-13; TCF13; TEAD-1; TEF-1  
**Mammalian Cell Selection:** Neomycin  
**Vector:** pCMV6-AC-GFP (PS100010)  
**E. coli Selection:** Ampicillin (100 ug/mL)  
**ORF Nucleotide Sequence:** >RG215492 representing NM\_021961  
**Red=Cloning site Blue=ORF Green=Tags(s)**

TTTTGTAATACGACTCACTATAGGGCGGCCGGAATTCGTCGACTGGATCCGGTACCGAGGAGATCTGCC  
GCC**CGATCGCC**

ATTGAGCCAGCAGCTGGAGCGGCAGTGAGAGCCCTGCCGAAAACATGGAAAGGATGAGTGACTCTGCAG  
ATAAGCCAATTGACAATGATGCAGAAGGGGTCTGGAGCCCGACATCGAGCAAAGCTTTCAGGAGGCCCT  
GGCTATCTATCCACCATGTGGGAGGAGGAAAATCATCTTATCAGACGAAGGCAAATGTATGGTAGGAAT  
GAATTGATAGCCAGATACATCAAACCTCAGGACAGGCAAGACGAGGACCAGAAAACAGGTGTCTAGTCACA  
TTCAGGTTCTTGCCAGAAGGAAATCTCGTGATTTTCATTCCAAGCTAAAGGATCAGACTGCAAAGGATAA  
GGCCCTGCAGCAGATGGCGGCCATGTCCCTCAGCCAGATCGTCTCGGCCACTGCCATTCATAACAAGCTG  
GGGCTGCCTGGGATTCCACGCCGACCTTCCCAGGGGCGCCGGGTTCTGGCCGGGAATGATTCAAACAG  
GGCAGCCAGGATCCTCACAAGACGTCAAGCCTTTTGTGCAGCAGGCCTACCCATCCAGCCAGCGGTAC  
AGCCCCATTCCAGGTTTGAGCCTGCATCGGCCCCAGCTCCCTCAGTCCCTGCCTGGCAAGGTGCTCC  
ATTGGCACAACCAAGCTTCGCCTGGTGGAAATTTTCAGCTTTTCTCGAGCAGCAGCGAGACCCAGACTCGT  
ACAACAAACACCTCTTCGTGCACATTGGGCATGCCAACCATTTACAGTGACCCATTGCTTGAATCAGT  
GGACATTCGTGAGATTTATGACAAATTTCTGAAAAGAAAGGTGGCTTAAAGAACTGTTTGAAAGGGC  
CTCAAATGCTTCTTCTCGTAAAATTTCTGGGCTGATTTAACTGCAATATTCAAGATGATGCTGGGG  
CTTTTTATGGTGTAAACAGTCAGTACGAGATTCTGAAAATATGACAGTCACCTGTTCCACCAAAGTTTG  
CTCCTTTGGGAAGCAAGTAGTAGAAAAAGTAGAGACGGAGTATGCAAGGTTTGAGAATGGCCGATTTGTA  
TACCGAATAAACCGCTCCCAATGTGTGAATATATGATCAACTTCATCCACAAGCTCAAACACTTACCAG  
AGAAATATATGATGAACAGTGTGTTGGAAAACCTCACAATTTTATTGGTGGTAACAAACAGGATACACA  
AGAAACTTACTCTGCATGGCCTGTGTGTTGAAGTTTCAAATAGTGAACACGGAGCACAACATCATATT  
TACAGGCTTGTAAAGGAC

**ACGCGTACGCGGCCGCTCGAG** - GFP Tag - GTTTAA



[View online »](#)

**Protein Sequence:** >RG215492 representing NM\_021961  
Red=Cloning site Green=Tags(s)

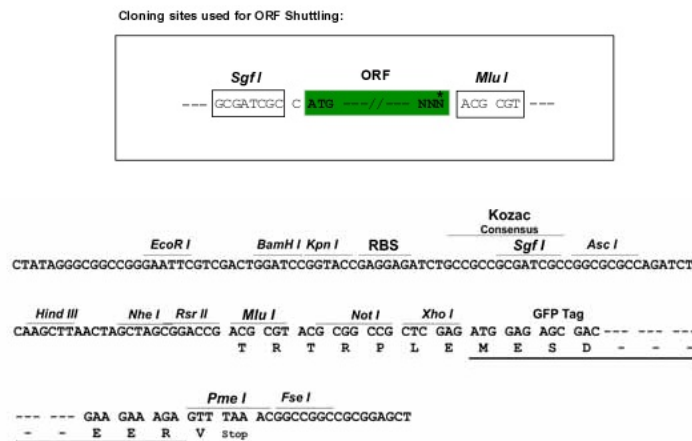
IEPSSWSGSESPAENMERMSDSADKPIDNDAEGVWSPDIEQSFQEALAIYPPCGRRKIILSDEGKMYGRN  
 ELIARYIKLRTGKTRTRKQVSSHIQVLARRKSRDFHSKLKDQTAKDALKQHMAAMSSAQIVSATAIHNKL  
 GLPGIPRPTFFGAPGFWPGMIQTGQPGSSQDVKPFVQQAYPEIQAQVAVTAPIPGFEPASAPAPSVPAWQGRS  
 IGTTKLRLEVFSAFLEQQRDPDSYNKHLFVHIGHANHSYSDPLLESVDIRQIYDKFPEKKGGLKELFGKG  
 PQNAFFLVKFWADLNCNIQDDAGAFYGVTSQYESSENMTVTCSTKVCSEFGKQVVEK VET EYARFENGRFV  
 YRINRSPMCEYMINFIHKLKHLPEKYMMSVLENFTILLVVTNRDTQETLLCMACVFVSEHGAQHII  
 YRLVKD

TRTRPLE - GFP Tag - V

**Chromatograms:** [https://cdn.origene.com/chromatograms/ja2528\\_c11.zip](https://cdn.origene.com/chromatograms/ja2528_c11.zip)

**Restriction Sites:** SgfI-MluI

**Cloning Scheme:**



**ACCN:** NM\_021961

**ORF Size:** 1278 bp

**OTI Disclaimer:** The molecular sequence of this clone aligns with the gene accession number as a point of reference only. However, individual transcript sequences of the same gene can differ through naturally occurring variations (e.g. polymorphisms), each with its own valid existence. This clone is substantially in agreement with the reference, but a complete review of all prevailing variants is recommended prior to use. [More info](#)

**OTI Annotation:** This clone was engineered to express the complete ORF with an expression tag. Expression varies depending on the nature of the gene.

**Components:** The ORF clone is ion-exchange column purified and shipped in a 2D barcoded Matrix tube containing 10ug of transfection-ready, dried plasmid DNA (reconstitute with 100 ul of water).

**Reconstitution Method:**

1. Centrifuge at 5,000xg for 5min.
2. Carefully open the tube and add 100ul of sterile water to dissolve the DNA.
3. Close the tube and incubate for 10 minutes at room temperature.
4. Briefly vortex the tube and then do a quick spin (less than 5000xg) to concentrate the liquid at the bottom.
5. Store the suspended plasmid at -20°C. The DNA is stable for at least one year from date of shipping when stored at -20°C.

**RefSeq:** [NM\\_021961.6](#)

**RefSeq Size:** 9433 bp

**RefSeq ORF:** 1281 bp

**Locus ID:** 7003

**UniProt ID:** [P28347](#)

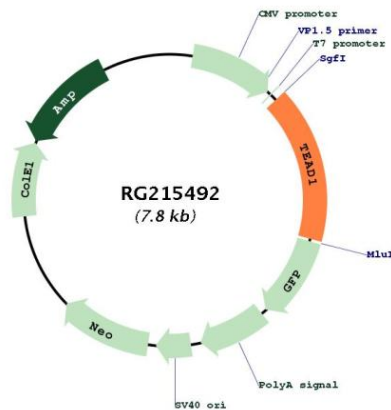
**Cytogenetics:** 11p15.3

**Domains:** TEA

**Protein Families:** Transcription Factors

**Gene Summary:** This gene encodes a ubiquitous transcriptional enhancer factor that is a member of the TEA/ATTS domain family. This protein directs the transactivation of a wide variety of genes and, in placental cells, also acts as a transcriptional repressor. Mutations in this gene cause Sveinsson's chorioretinal atrophy. Additional transcript variants have been described but their full-length natures have not been experimentally verified. [provided by RefSeq, May 2010]

### Product images:



Circular map for RG215492