

Product datasheet for **RG215484**

SLC4A5 (NM_133478) Human Tagged ORF Clone

Product data:

Product Type: Expression Plasmids
Product Name: SLC4A5 (NM_133478) Human Tagged ORF Clone
Tag: TurboGFP
Symbol: SLC4A5
Synonyms: NBC4; NBCe2
Mammalian Cell Selection: Neomycin
Vector: pCMV6-AC-GFP (PS100010)
E. coli Selection: Ampicillin (100 ug/mL)
ORF Nucleotide Sequence: >RG215484 representing NM_133478
 Red=Cloning site Blue=ORF Green=Tags(s)

TTTTGTAATACGACTCACTATAGGGCGGCCGGAATTCGTCGACTGGATCCGGTACCGAGGAGATCTGCC
 GCC**CGATCGCC**

ATGAAGGTGAAGGAGGAGAAGGCTGGGGTAGGAAAGCTGGACCACACTAACCACAGGAGGAGATTCCGG
 ATCAGAAAGAATGCCCTCTATCCACATTGGGCTTCCAGTACCCACTACCCTCAAAGAAAACTGACCA
 GAAGGGACATCTTCAGGCCTGCAAAAAGTCCACTGGGGCTGCGGCCAGACCAGCCACAGCAGGAACTG
 ACTGGCCAGGGAGTGGGCAAGCAGCCAGGACAGCAGCATGGATCTTATCAGCAGGACTCGTCCCGAG
 CTGCTGAGCAGCTCCAGGACATCTGGGGGAGGAAGATGAGGCTCCCAACCCACCCTCTTACAGAGAT
 GGATACTCTGCAGCATGACGGAGACCAGATGGAGTGGAAGGAGTCAGCCAGGTGGATAAAGTTGAAGAA
 AAGGTAGAGGAAGGCGGCAACGCTGGAGCAAGCCCCACGTGTCCACACTATCCCTGCACAGCCTCTTCG
 AGCTCCGTACCTGCCTGCAGACGGGGACGGTGTGCTGGATTTGGACAGTGGCTCCTTACCACAGATCAT
 AGATGATGTCAATTGAGAAGCAGATTGAGGATGGTCTCCTGCGGCCAGAGCTCCGGGAGAGGGTCAGTTAC
 GTCCTCCTGAGGAGGCACCGCCACCAACAAGAAGCCCATCCACCGCTCCTTAGCTGACATTGGGAAGT
 CAGTCTCCACCACAAATCGCAGTCTGCCCGGAGCCCTGGTGTGGCCCGAGTCTACACCACTCCACGGA
 AGACCTGCGGATGCGGCAGAGTGCAAATTACGGACGTCTGTGTCATGCCAGAGCAGAAGCATGAATGAC
 ATTTCTCACCCCAAACACAGACCAGCGGAAAAACAAATTCATGAAGAAGATCCCAAGGACTCAGAAG
 CGTCCAACGTGCTCGTGGGCGAGGTGGACTTCTAGACCAGCCATTTCATCGCGTTCTGTCGCCTCATCCA
 GTCGGCCATGCTGGGAGGAGTGACCGAGGTGCCTGTCCCAACAGATTTCTGTTATACTACTGGGACCT
 TCTGGGAGAGCAAAATCCTACAATGAAATTGGCCGTGCCATTGCAACCCTCATGGTAGATGATCTTTCA
 GTGACGTGGCCTACAAAGCCCGCAATCGGGAAGATCTGATCGCAGGAATTGATGAATTTCTGGATGAGGT
 CATCGTCTTCTCCTGGAGAATGGACCCAAATATCCGGATTGAGCCCCCAAGAAGGTGCCCTCTGCT
 GACAAGAGGAAATCTGTGTTCTCCCTAGCAGAGCTGGGCCAGATGAATGGCTCTGTGGGAGGAGCGCGG
 GAGCTCCTGGAGGAGCAATGGAGGTGGTGGTGGTGGTGGCAGTGGCGGGGGCTGGCAGTGGCGGGGC
 CGCGGAACAAGCAGCGGGATGATGGAGAGATGCCAGCCATGCATGAAATCGGGGAGGAACTTATCTGG



[View online »](#)

ACAGGAAGGTTCTTCGGTGGCCTGTGTCTGGATATCAAGAGGAAGTTGCCCTGGTCCCAAGTGACTTCT
 ATGATGGCTTCCACATTCAGTCCATCTCTGCCATCCTATTCATCTACCTCGGCTGTATCACCAACGCGAT
 CACCTTTGGTGGGCTTCTGGGGATGCCACCGACAATTATCAGGGAGTGTGGAGAGCTTCTGGGCACT
 GCCATGGCTGGCTCCTTGTCTGCCTCTTCTCGGGACAGCCTCTCATCATTCTCAGCAGCACGGGGCCCA
 TCCTCATCTTTGAGAAGCTCCTCTTGCAGTTCAGCAAAGGCAATGGCCTGGACTACATGGAGTCCCGCT
 CTGGATTGGCCTACACTCAGTGTCCAGTGCCTTATCCTAGTGGCCACAGATGCCAGCTTATCATCAA
 ATATACCCCGCTTCCAGGAGGGCTTCTCCACCCTTATCAGCTTCATCTTCCATCCAGATGCCATCA
 AGAAGATGATCGTGCCTTCAAGTACTACCCTATCAATATGGACTTCAAGCCAAACTTCATCACTACCTA
 CAAGTGGCAGTGTGTGCGCCCTGACACAGTGAATAACAACCGTGTCAATGCTTCAGCCCCATTGGCACC
 GACACCAACGCTTCTCTGTACAACCTCCTTAACCTCACAGCGTTGGACTGGTCCCTGCTGAGCAAGAAGG
 AGTGTCTGAGCTACGGCGGGCGCCTGCTTGGGAATTCCTGCAAGTTATCCCAGACCTGGCGCTCATGTC
 CTTTCATCTTTCTTTGGGACATACTCCATGACCCTGACCCTGAAGAAGTCAAATTCAGCCGCTATTTT
 CCTACCAAGTCCGGGCCCTGGTGGCTGACTTTTCCATTGTTTTTCCATCCTGATGTTCTGTGGAATCG
 ATGCTGTTTTGGCCTAGAACTCCAAGCTGCATGTGCCAGTGTATCAAGCCACGCGGCTGACCG
 AGGCTGGTTCGTGGCCCCCTTGGGAAGAACCCGTGGTGGTATACCCAGCAAGCATCCTGCCCGCCTG
 CTGGTGACCATCCTGATCTTCATGGACCAGCAGATCACTGCCGTATTGTCAACCGAAGGAGAACAAC
 TGAAGAAGGCTGCCGGCTACCATCTGGACTGTTCTGGGTGGCATCCTCATGGCTTGTGCTCCTTTAT
 GGGGCTCCCTGGTACGTGGCTGCCACGGTCATCTCCATCGCCACATCGACAGCCTCAAGATGGAGACA
 GAGACCAAGTGCCTGGGAGCAGCCCCAGTTTCTGGAGTCAGGGAACAGAGAGTAACCGGCATCATCG
 TCTTCATCCTGACGGGAATCTCTGTCTTCTGGCTCCCATCCTAAAGTGTATCCCCTGCCGGTGTGTA
 CGGAGTCTTCTTACATGGGCGTGGCCTCCCTGAATGGCATCCAGTTCGGGAACGCTGCAAGCTCTTC
 CTGATGCCAGCAAGCACAGCCGACCATGCCTTCTGCGGCAGTCCCGCTGCGCCGGATCCACCTCT
 TCACCTGGTGCAGATCCTCTGCCTGGCGGTGCTGGATCCTCAAATCCAGGTGGCTGCCATCATCTT
 CCGGTCATGATCCTGGGCTCATCATCGTTCGAAGGCTTCTGGATTTTCATCTTTCCAGCAGCAGCTG
 GCCTGGATTGACAAATCCTCCCAGAGAAGAAAAAAGGAGACAGACAAGAAGAGAAAGAAAAAAG
 GGGCCACGAGGACTGTGATGAGGAGCCCCAGTTCCCTCCTCCCTCGGTTATAAAGATCCCATGAAAA
 GTCCAATCAGATCCCCAAAACGGTATCCACTGCATTGCCAGAAAAAGATCTCCAGTTGGAGTTACTCA
 CTC

ACGCGTACGCGGCCGCTCGAG – GFP Tag – GTTTAA

Protein Sequence:

>RG215484 representing NM_133478
 Red=Cloning site Green=Tags(s)

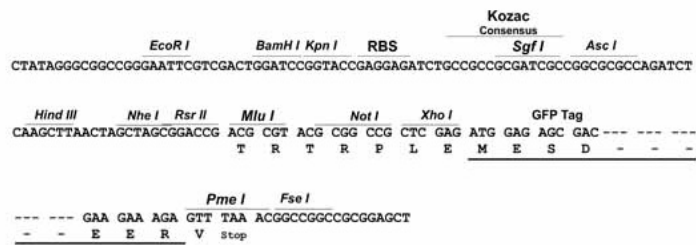
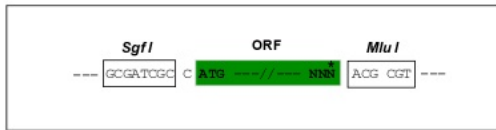
MKVKEEKAGVGLDHTNHRRRFPDQKCEPPIHIGLPVPTYQRKTDQKGHL SGLQKVHWGLRPDQPQEL
 TGPVGSASSQDSSMDLISRTRSPAAEQLDILGEEDEAPNPTLFTEMDDLQHDGDMEWKESARWIKFEE
 KVEEGGERWSKPHVSTLSLHSLFELRTCLQTGTVLLDLDSGSLPQIIDVIEKQIEDGLRPELRERSY
 VLLRRHRHQTKPIHRSRADIGKSVSTTNRSPARSPGAGPSLHHSTEDLRMRQSANYGRLCHAQSRSMND
 ISLTPNTDQRKNKFMKKIPKDSEASNVLVGEVDFLDQPFIAFVRLIQSAMLGGVTEVPVTRFLFILLGP
 SGRAKSYNEIGRAIATLMVDDLFSVAVYKARNREDLIAGIDEFLDEVIVLPPGEWDPNIRIEPPKVPSPA
 DKRKSVFSLAELQGMNGSVGGGGAPGGGNGGGGGGGGGGAGSGGAGGTTSSGDDGEMPAMHEIGEELIW
 TGRFFGGLCLDIKRLPWFPDFYDFGHIQSISAILFIYLGICITNAITFGLLGDATDNYQGMESFLGT
 AMAGSLFCLFSGQLIILSSTGPILIFEKLLDFSKGNGLDYMEFRLWIGLHSAVQCLILVATDASFIIK
 YITRFTEEGFSTLISFIFIYDAIKKMIGAFKYYPINMDFKPNFITTYKCECVAPDVTNTVFNASAPLAP
 PTNASLYNLNL TALDWSLLSKKECLSYGGRLLGNSCKFIPDLALMSFILFFGTYSMTLTLKKFKFSRYF
 PTKVRALVADFSIVFSILMFCGIDACFLET PKLHVPSVIKPTRPDRGWVAFPGKNPWVVYYPASILPAL
 LVTILIFMDQQITAVIVNRKENLKAAGYHLDFWVGILMALCSFMGLPWYVAATVISIAHIDSLKMET
 ETSAPGEQPQFLGVREQRVTGIIIVFILTGISVFLAPILKCIPLVLYGVFLYMGVASLNGIQFWERCKLF
 LMPAKHQPDHAFLRHVPLRRIHLFTLVQILCLAVLWILKSTVAAIIFPVMILGLIIVRRLLDFIFSQHD
 AWIDNILPEKEKEDTKRKRKKG AHEDCDEEPQFPPPSVIKIPMESVQSDPQNGIHCIAKRSSWSYS
 L

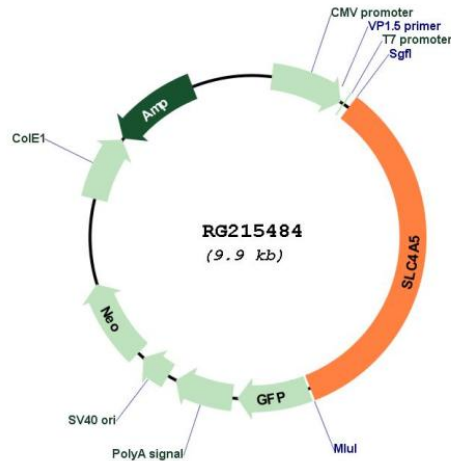
TRTRPLE – GFP Tag – V

Restriction Sites: SgfI-MluI

Cloning Scheme:

Cloning sites used for ORF Shuttling:



Plasmid Map:


ACCN: NM_133478

ORF Size: 3363 bp

OTI Disclaimer: The molecular sequence of this clone aligns with the gene accession number as a point of reference only. However, individual transcript sequences of the same gene can differ through naturally occurring variations (e.g. polymorphisms), each with its own valid existence. This clone is substantially in agreement with the reference, but a complete review of all prevailing variants is recommended prior to use. [More info](#)

OTI Annotation: This clone was engineered to express the complete ORF with an expression tag. Expression varies depending on the nature of the gene.

Components: The ORF clone is ion-exchange column purified and shipped in a 2D barcoded Matrix tube containing 10ug of transfection-ready, dried plasmid DNA (reconstitute with 100 ul of water).

Reconstitution Method:

1. Centrifuge at 5,000xg for 5min.
2. Carefully open the tube and add 100ul of sterile water to dissolve the DNA.
3. Close the tube and incubate for 10 minutes at room temperature.
4. Briefly vortex the tube and then do a quick spin (less than 5000xg) to concentrate the liquid at the bottom.
5. Store the suspended plasmid at -20°C. The DNA is stable for at least one year from date of shipping when stored at -20°C.

RefSeq: [NM_133478.3](#)

RefSeq Size: 6364 bp

RefSeq ORF: 3366 bp

Locus ID: 57835

UniProt ID: [Q9BY07](#)

Cytogenetics: 2p13.1

Protein Families: Transmembrane

Gene Summary: This gene encodes a member of the sodium bicarbonate cotransporter (NBC) family, part of the bicarbonate transporter superfamily. Sodium bicarbonate cotransporters are involved in intracellular pH regulation and electroneutral or electrogenic sodium bicarbonate transport. This protein is thought to be an integral membrane protein. Multiple transcript variants encoding different isoforms have been found for this gene, but the biological validity of some variants has not been determined. [provided by RefSeq, Jul 2008]