

## Product datasheet for **RG215459**

### **BATF2 (NM\_138456) Human Tagged ORF Clone**

#### Product data:

Product Type:	Expression Plasmids
Product Name:	BATF2 (NM_138456) Human Tagged ORF Clone
Tag:	TurboGFP
Symbol:	BATF2
Synonyms:	SARI
Mammalian Cell Selection:	Neomycin
Vector:	pCMV6-AC-GFP (PS100010)
E. coli Selection:	Ampicillin (100 ug/mL)
ORF Nucleotide Sequence:	>RG215459 representing NM_138456 Red=Cloning site Blue=ORF Green=Tags(s)

TTTTGTAATACGACTCACTATAGGGCGGCCGGAATTCGTCGACTGGATCCGGTACCGAGGAGATCTGCC  
GCC**CGATCGCC**

ATGCACCTCTGTGGGGCAATGGGCTGCTGACCCAGACAGACCCCAAGGAGCAACAAAGGCAGCTGAAGA  
AGCAGAAGAACCAGCCAGCCCGCCAGCGAAGCCGGCAGAAGCACACAGACAAGGCAGACGCCCTGCACCA  
GCAGCACGAGTCTCTGAAAAAGACAACCTCGCCCTGCGGAAGGAGATCCAGTCCCTGCAGGCCGAGCTG  
GCGTGGTGGAGCCGACCCTGCACGTGCATGAGCGCTGTGCCCCATGGATTGTGCCTCCTGCTCAGCTC  
CAGGGCTCCTGGGCTGCTGGGACCAGGCTGAGGGGCTCCTGGGCCCTGGCCACAGGGACAACATGGCTG  
CCGGGAGCAGCTGGAGCTGTTCCAGACCCCGGGTTCCTGTTACCCAGCTCAGCCGCTCTCTCCAGGTCCA  
CAGCCTCATGATTCTCCAGCCTCCTCCAGTGCCCCCTGCCCTCACTGTCCCTTGCCCCGCTGTGGTTG  
CTGAACCTCCTGTCCAGCTGTCCCCAGCCCTCCTGTTTGCCTCGCACACTGGTTCCAGCCTGCAGGG  
GTCTTCTCTAAGCTCAGTGCCCTCCAGCCAGCCTCACGGCCAAACTGCCCTCCACAGCCCCTCGAG  
CTGGAGCATCCCACCAGAGGGAAGCTGGGGTCTCTCCGACAACCCTTCTCTGCCCTGGGGCTTGAC  
GTCTGCAGAGCAGGGAGCACAACCTGCTCTCTCAGCAGCCACTTGGCAAGGGCTGGTTGTGGATCCCAG  
CCCTCACCTCTCTGGCCTTCTCTGCTCTCCTCTGCTCAAGTCCACTTC

**ACGCGT**ACGCGGCCGCTCGAG - GFP Tag - GTTTAA



[View online »](#)

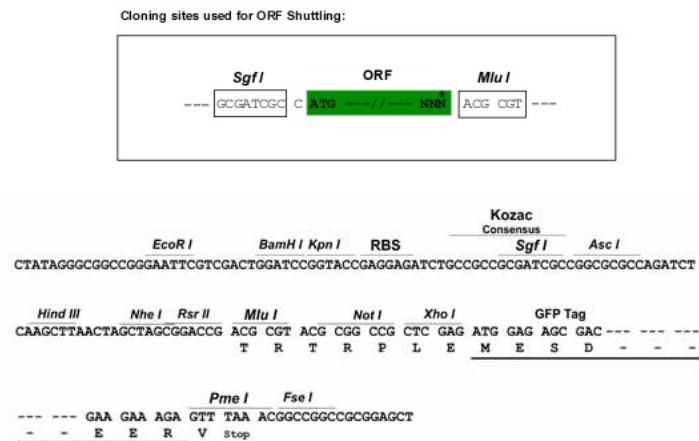
**Protein Sequence:** >RG215459 representing NM\_138456  
Red=Cloning site Green=Tags(s)

MHL CGNGLLTQTDPKEQQRQLKKQKNRAAAQRSRQKHTDKADALHQQHESLEKDNLALRKEIQSLQAE  
 AWWSRTLHVHERLCPMDCASC SAPGLLGCDWAEGLLGPGPQQHGCREQLFQTPGSCYPAQPLSPGP  
 QPHDPSLLQCPLPSLSLGPVVAEPPVQLSPSPLLFASHTGSSLQSSSKLSALQPSLTAQTAPPQPLE  
 LEHPTRGKLGSSPDNPSSALGLARLQSRHKPALSAATWQGLVVDPSHPHLLAFPLLSSAQVHF

TRTRPLE - GFP Tag - V

**Restriction Sites:** SgfI-MluI

**Cloning Scheme:**



**ACCN:** NM\_138456

**ORF Size:** 822 bp

**OTI Disclaimer:** The molecular sequence of this clone aligns with the gene accession number as a point of reference only. However, individual transcript sequences of the same gene can differ through naturally occurring variations (e.g. polymorphisms), each with its own valid existence. This clone is substantially in agreement with the reference, but a complete review of all prevailing variants is recommended prior to use. [More info](#)

**OTI Annotation:** This clone was engineered to express the complete ORF with an expression tag. Expression varies depending on the nature of the gene.

**Components:** The ORF clone is ion-exchange column purified and shipped in a 2D barcoded Matrix tube containing 10ug of transfection-ready, dried plasmid DNA (reconstitute with 100 ul of water).

**Reconstitution Method:**

1. Centrifuge at 5,000xg for 5min.
2. Carefully open the tube and add 100ul of sterile water to dissolve the DNA.
3. Close the tube and incubate for 10 minutes at room temperature.
4. Briefly vortex the tube and then do a quick spin (less than 5000xg) to concentrate the liquid at the bottom.
5. Store the suspended plasmid at -20°C. The DNA is stable for at least one year from date of shipping when stored at -20°C.

**RefSeq:** [NM\\_138456.4](#)

**RefSeq Size:** 2142 bp

**RefSeq ORF:** 825 bp

**Locus ID:** 116071

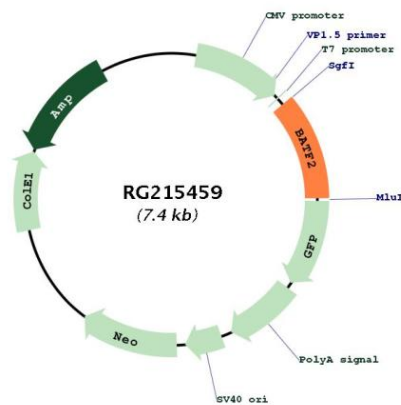
**UniProt ID:** [Q8N1L9](#)

**Cytogenetics:** 11q13.1

**Protein Families:** Transcription Factors

**Gene Summary:** AP-1 family transcription factor that controls the differentiation of lineage-specific cells in the immune system. Following infection, participates in the differentiation of CD8(+) thymic conventional dendritic cells in the immune system. Acts via the formation of a heterodimer with JUN family proteins that recognizes and binds DNA sequence 5'-TGA[CG]TCA-3' and regulates expression of target genes (By similarity). Selectively suppresses CCN1 transcription and hence blocks the downstream cell proliferation signals produced by CCN1 and inhibits CCN1-induced anchorage-independent growth and invasion in several cancer types, such as breast cancer, malignant glioma and metastatic melanoma. Possibly acts by interfering with AP-1 binding to CCN1 promoter.[UniProtKB/Swiss-Prot Function]

### Product images:



Circular map for RG215459