

Product datasheet for **RG215457**

ADAM10 (NM_001110) Human Tagged ORF Clone

Product data:

Product Type:	Expression Plasmids
Product Name:	ADAM10 (NM_001110) Human Tagged ORF Clone
Tag:	TurboGFP
Symbol:	ADAM10
Synonyms:	AD10; AD18; CD156c; CDw156; HsT18717; kuz; MADM; RAK
Mammalian Cell Selection:	Neomycin
Vector:	pCMV6-AC-GFP (PS100010)
E. coli Selection:	Ampicillin (100 ug/mL)



[View online »](#)

ORF Nucleotide Sequence:

>RG215457 representing NM_001110
 Red=Cloning site Blue=ORF Green=Tags(s)

TTTTGTAATACGACTCACTATAGGGCGGCCGGGAATTCGTCGACTGGATCCGGTACCGAGGAGATCTGCC
 GCC**CGGATCGCC**

ATGGTGTGCTGAGAGTGTAAATCTGCTCCTCTCCTGGCGCGGGGATGGGAGTTCAGTATGGGAATC
 CTTTAAATAAATATATCAGACATTATGAAGGATTATCTTACAATGTGGATTTCATTACACCAAAAACACCA
 CGGTGCCAAAAGAGCAGTCTCACATGAAGACCAATTTTTACGTCTAGATTTCCATGCCCATGGAAGACAT
 TTCAACCTACGAATGAAGAGGGACACTTCCCTTTTCAGTGATGAATTTAAAGTAGAAACATCAAATAAAG
 TACTTGATTATGATACCTCTCATATTTACTGGACATATTTATGGTGAAGAAGGAGTTTATAGCCATGG
 GTCTGTTATTGATGGAAGATTTGAAGGATTCATCCAGACTCGTGGTGGCACAATTTATGTTGAGCCAGCA
 GAGAGATATATTAAGACCGAAGTCTGCCATTTCACTCTGTCTTTATCATGAAGATGATATTAACATC
 CCCATAAATACGGTCTCAGGGGGCTGTGCAGATCATTAGTATTTGAAAGAATGAGGAAATACCAGAT
 GACTGGTGTAGAGGAAGTAACACAGATACCTCAAGAAGAATGCTGCTAATGGTCCAGAAGTCTGAGG
 AAAAAACGTACAACCTCAGCTGAAAAAATACTTGTCTAGCTTTATATTCAGACTGATCATTGTCTTTTA
 AATATTACGGAACACGAGAAGCTGTGATTGCCAGATATCCAGTCATGTTAAAGCGATTGATACAATTTA
 CCAGACCACAGACTTCTCCGGAATCCGTAACATCAGTTTCATGGTAAAACGCATAAGAATCAATACAAC
 GCTGATGAGAAGGACCCTACAAATCCTTTCCGTTTCCAAATATTGGTGTGGAGAAGTTTCTGGAATTGA
 ATCTGAGCAGAAATCATGATGACTACTGTTTGGCTATGTCTTCACAGACCGAGATTTTATGATGGCGT
 ACTTGGTCTGGCTGGGTGGAGCACCTCAGGAAGCTCTGGAGGAATATGTGAAAAAGTAAACTCTAT
 TCAGATGGTAAGAAGAAGTCTTAAACACTGGAATTTACTGTTCAGAAGTATGGGTCTCATGTACCTC
 CCAAAGTCTCTCACATTACTTTTGGCTCAGGAAGTTGGACATAACTTTGGATCCCCACATGATTTGGAAC
 AGAGTGCACACCAGGAGAATCTAAGAATTTGGGTCAAAAAGAAAATGGCAATTACATCATGTATGCAAGA
 GCAACATCTGGGGACAACTTAACAACAATAAATTTCTCACTCTGTAGTATTAGAAATATAAGCCAAGTTC
 TTGAGAAGAAGAGAAACAACCTGTTTTGTTGAATCTGGCCAACCTATTTGTGGAATGGAATGGTAGAACA
 AGGTGAAGAATGTGATTGTGGCTATAGTGACCAGTGTAAGATGAATGCTGCTTCGATGCAATCAACCA
 GAGGGAAGAAAATGCAACTGAAACCTGGGAAACAGTGCAGTCCAAGTCAAGTCTTGTGTACAGCAC
 AGTGTGCATTCAAGTCAAAGTCTGAGAAGTGTGGGATGATTGAGACTGTGCAAGGGAAGGAATATGTAA
 TGGCTTACAGCTCTCTGCCAGCATCTGACCCTAAACCAAACTTCACAGACTGTAATAGGCATACACAA
 GTGTGCATTAATGGCAATGTGCAGTTCTATCTGTGAGAAATATGGCTTAGAGGAGTGTACGTGTGCCA
 GTTCTGATGGCAAAGATGATAAAGAATTATGCCATGTATGCTGTATGAAGAAAATGGACCCATCAACTTG
 TGCCAGTACAGGGTCTGTGCAAGTGGAGTAGGCACTTCAGTGGTGAACCATCACCCCTGCAACCTGGATCC
 CCTTGAACGATTTTAGAGGTTACTGTGATGTTTTATGCGGTGCAGATTAGTAGATGCTGATGGTCCCTC
 TAGCTAGGCTTAAAAAGCAATTTTAGTCCAGAGCTCTATGAAAACATTGCTGAATGGATTGTGGCTCA
 TTGGTGGGCAAGTACTTATGGGAATTGCTCTGATCATGCTAATGGCTGGATTTAATAAGATATGCAGT
 GTTCATACTCCAAGTAGTAATCCAAAGTTGCCTCCTCTAAACCACTTCCAGGCACTTTAAAGAGGAGGA
 GACCTCCACAGCCATTCAGCAACCCAGCGTCAGCGGCCCGAGAGAGTTATCAATGGGACACATGAG
 ACGC

ACGCGTACGCGGCCGCTCGAG - GFP Tag - GTTTAA

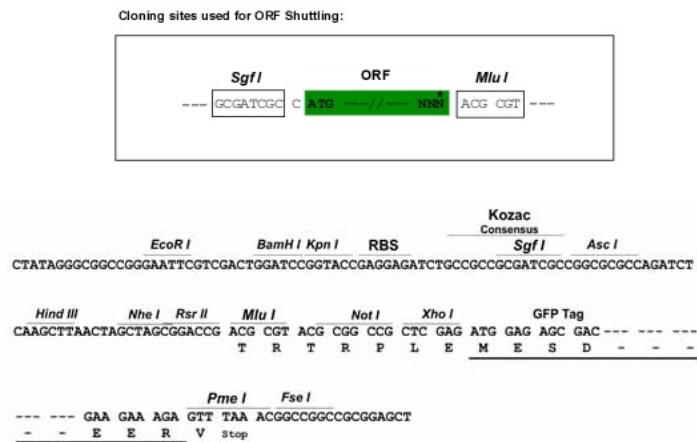
Protein Sequence: >RG215457 representing NM_001110
 Red=Cloning site Green=Tags(s)

```
MVLLRVLILLLSWAAGMGQYGNPLNKYIRHYEGLSYNVDSLHQKHQRAKRAVSHEDQFLRLDFHAHGRH
FNLRMKRDTSLFSDFEKVFETSNKVLDDYDTSHIYTGHIYGEESFSGSVIDGRFEGFIQTRGGTFYVEPA
ERYIKDRTLPFHSVIYHEDDINYPHKYGPQGGCADHSVFERMRKYQMTGVEEVTQIPQEEHAANGPELLR
KKRTTSAEKNTCQLYIQTDHLFFKYYGTREAVIAQISSHVKAIDTIYQTDFSGIRNISFMVKRIRINTT
ADEKDPTNPFRRFPNIGVEKFLLELNSEQNHDDYCLAYVFTDRDFDDGVLGLAWVGAPSGSSGGICEKSKLY
SDGKKKSLNTGIIITVQNYGSHVPPKVSHITFAHEVGHNFSGPHDSGTECTPGESKNLQKENGNYIMYAR
ATSGDKLNNKFSLCSIRNISQVLEKRRNCFVESGQPICGNGMVEQGEEDCGYSDQCKDECCFDANQP
EGRKCKLPGKQCSPSQGPCCTAQAFAKSKSEKCRDDSDCAREGICNGFTALCPASDPKPNFTDCNRHTQ
VCINGQCAGSICEKYGLEECTASSDGKDDKELCHVCCMKMDPSTCASTGSVQWSRHFSGRITITLQPGS
PCNDFRGYCDVFMRCRLVDADGPLARLKAIFSPELYENIAEWIVAHWWAVLLMGIALIMLMAGFIKICS
VHTPSSNPKLPPPPLPGLTKRRRPPQPIQQPQRQRPRESYQMGHMRR
```

TRTRPLE - GFP Tag - V

Restriction Sites: SgfI-MluI

Cloning Scheme:

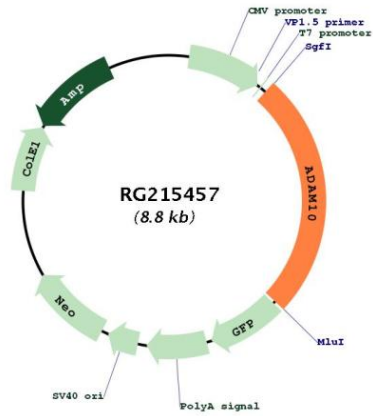


ACCN: NM_001110

ORF Size: 2244 bp

OTI Disclaimer:	Due to the inherent nature of this plasmid, standard methods to replicate additional amounts of DNA in E. coli are highly likely to result in mutations and/or rearrangements. Therefore, OriGene does not guarantee the capability to replicate this plasmid DNA. Additional amounts of DNA can be purchased from OriGene with batch-specific, full-sequence verification at a reduced cost. Please contact our customer care team at custsupport@origene.com or by calling 301.340.3188 option 3 for pricing and delivery.
	The molecular sequence of this clone aligns with the gene accession number as a point of reference only. However, individual transcript sequences of the same gene can differ through naturally occurring variations (e.g. polymorphisms), each with its own valid existence. This clone is substantially in agreement with the reference, but a complete review of all prevailing variants is recommended prior to use. More info
OTI Annotation:	This clone was engineered to express the complete ORF with an expression tag. Expression varies depending on the nature of the gene.
Components:	The ORF clone is ion-exchange column purified and shipped in a 2D barcoded Matrix tube containing 10ug of transfection-ready, dried plasmid DNA (reconstitute with 100 ul of water).
Reconstitution Method:	<ol style="list-style-type: none"> 1. Centrifuge at 5,000xg for 5min. 2. Carefully open the tube and add 100ul of sterile water to dissolve the DNA. 3. Close the tube and incubate for 10 minutes at room temperature. 4. Briefly vortex the tube and then do a quick spin (less than 5000xg) to concentrate the liquid at the bottom. 5. Store the suspended plasmid at -20°C. The DNA is stable for at least one year from date of shipping when stored at -20°C.
RefSeq:	NM_001110.4
RefSeq Size:	3927 bp
RefSeq ORF:	2247 bp
Locus ID:	102
UniProt ID:	O14672
Cytogenetics:	15q21.3
Domains:	Reprolysin, DISIN
Protein Families:	Druggable Genome, Protease, Transmembrane
Protein Pathways:	Alzheimer's disease, Epithelial cell signaling in Helicobacter pylori infection
Gene Summary:	Members of the ADAM family are cell surface proteins with a unique structure possessing both potential adhesion and protease domains. This gene encodes an ADAM family member that cleaves many proteins including TNF-alpha and E-cadherin. Alternate splicing results in multiple transcript variants encoding different proteins that may undergo similar processing. [provided by RefSeq, Feb 2016]

Product images:



Circular map for RG215457