

## Product datasheet for **RG215451**

### **TRIM71 (NM\_001039111) Human Tagged ORF Clone**

#### **Product data:**

Product Type:	Expression Plasmids
Product Name:	TRIM71 (NM_001039111) Human Tagged ORF Clone
Tag:	TurboGFP
Symbol:	TRIM71
Synonyms:	HYDCC1; LIN-41; LIN41
Mammalian Cell Selection:	Neomycin
Vector:	pCMV6-AC-GFP (PS100010)
E. coli Selection:	Ampicillin (100 ug/mL)



[View online »](#)

**ORF Nucleotide Sequence:**

>RG215451 representing NM\_001039111  
 Red=Cloning site Blue=ORF Green=Tags(s)

TTTTGTAATACGACTCACTATAGGGCGGCCGGGAATTCGTCGACTGGATCCGGTACCGAGGAGATCTGCC  
 GCC**CGGATCGCC**

ATGGCTTCGTTCCCGAGACCGATTTCAGATCTGCTTGTGTGCAAGGAGATGTGCGGCTCGCCGGCGC  
 CGCTCTCCTCCAACCTCGTCCGCGTCTGCTCTCTCCTCGCAGACGTCCACGTCTGCGGGGGCGCGCGCG  
 GGGCCCTGGGGCGCGCGCGCCGCTACACGTCTGCCCTGCCCTGCACGCCCTTCTGCGCCCTGCCTC  
 GAGGCGCACCGGCTGCCGGCGCGGGCGCGCGCGGGAGAGCCGCTCAAGCTGCGCTGCCCGTGT  
 GCGACCAGAAAGTAGTGCTAGCCGAGGCGGGGATGGACGCGTGCCTTCGTCGCCCTTCTGCTTAG  
 CAACCTGCTCGACGCGGTGGTGGCCACTGCCGACGAGCCGCCCAAGAACGGGCGCGCGCGCTCCG  
 GCGGGAGCGGGCCACAGCAACCACCGCACCGCTACCACGCGCACCCGCGCGCTCCGCTCCG  
 CGCGCCACTCCCGAGGCGCCGACGCCCGCGCTTCCGCTCGGCACCCGGCGCCCTGCCGTTT  
 CCCGTGCGCGTCTGCTCCGCCCTCTACGGTGCAGCTCGTGGATGAGGGCAACGCAGCTTCTTCG  
 CGCTGCCTCGACTGCCAGGAGCACTGTGCGAACTGCGTCCGAGCGCACCCAGCGGTGCCCTACCA  
 AGGACCACTACATCGAGCGCGCCCGCCGGTCCCGGTGCCGACGAGCGCGCAGCAGCTCGGGCTCGG  
 GCCGCCCTTCCCGGCCGCCCTTCTCCATCCTCTCAGTGTTCGAGCGCCTCGGCTTCTGCCAGCAC  
 CACGACGACGAGGTGCTGCACCTGTACTGTGACTTGTCTGTACCCATCTGTCGTGAGTGACAATGG  
 GCCGGCATGGGGCCACAGTTCATCTACCTCCAGGAGGCACTGCAGGACTCACGGGCACTACCATCCA  
 GCTGCTGGCAGATGCCAGCAGGACGACAGGCAATCCAGCTGAGCATCGAGCAGGCCAGCGGTGGCG  
 GAACAGGTGGAGATGAAGGCGAAGTTGTGAGTGGAGGTCAAAGCCGTGACGGCGAGGCATAAGAAAG  
 CCCTGGAGGAACGCGAGTGTGAGTGTGTGGAAGGTAGAAAAGATCCGCCAGGTGAAAGCCAAGTCTCT  
 GTACCTGCAGGTGGAGAAGCTGCGGCAAACTCAACAAGCTTGAGAGCACCATCAGTGCCGTGACGAG  
 GTCCTGGAGGAGGTAGAGCGCTAGACATCCTACTGGCCGAGACCGGATGCTGGCCAGGTGACGAGC  
 TGAAGACCGTGGGAGCCTCCTGCAGCCCCAGGAAGACGACCGAGTCATGTTACACCCCCCGATCAGGC  
 ACTGTACCTTGCCATCAAGTCTTTGGCTTTGTTAGCAGCGGGCCTTGGCCCACTCACCAAGGCCACA  
 GCGCATGGCCTCAAGCGTCCCTCCAGGTAAGGTGGCTCCTTACAGTCATTGGTTATGACCACGATG  
 GTGAGCCCCGCTCTCAGGAGGCGACTGATGTCGGTGTGGTCTGGGCCCTGATGGCAACCTGTTGG  
 TGCAGAGGTGAGTATCAGCAGAATGGACATACGTGGTGTGTTACCGACCCAGCTGGAGGTGAGCAC  
 CTGGTATCTGTGACTGTGCAACCAGCACATTGAGAACAGCCCTTCAAGGTGGTGGTCAAGTCAGGCC  
 GCAGCTACGTGGGCAATTGGGCTCCCGGGCTGAGCTTCGGCAGTGAGGGTACAGCGATGGCAAGCTCTG  
 CCGCCCTTGGGGTGTGAGTGTAGACAAGGAGGGTACATCATTGTCGCCGACCGCAGCAACAACCGCATC  
 CAGGTGTTCAAGCCCTGCGGCGCCTTCCACCACAAATTCGGCACCTGGGCTCCCGGCTGGGCAGTTTCG  
 ACCGACCAGCCGGCGTGGCTGTGACGCTCACGAGGATCGTGGTGGCTGACAAGGACAATCATCGCAT  
 CCAGATCTTACGTTGAGGGCCAGTTCCTCCTCAAGTTGGTGGAAAGGAACCAAGAATGGGCAGTTC  
 AACTACCTTGGGATGTGGCGTGAATTCTGAGGGCAAGATCCTGGTCTCAGACACGAGGAACCCGGA  
 TCCAGCTGTTGGGCTGATGGTGTCTTCTAAACAAGTATGGCTCGAGGGGCTCTCTGGAAGCACTT  
 TGACTCCCACGGGGTGTGGCCTTCAACCATGAGGGCCACTTGGTGGTCACTGACTTCAACAACCCCGG  
 CTCTGGTTATTACCCCGACTGCCAGTCGGCAGGCTTCTGGGCTCGGAGGGCACAGGCAATGGGCAAT  
 TCTGCGCCACAAAGGGTAGCTGTGGACCAGGAAGGGCGCATATTGTGGCGGATTCCAGGAACCATCG  
 GGTACAGATGTTTGAATCCAACGGCAGCTTCTGTGCAAGTTGGTGTCAAGGCAGCGCTTGGGCGAG  
 ATGGACCGCCCTTCCGGCATCGCCATCACCCCGACGGAATGATCGTTGTGGTGGACTTTGGCAACAATC  
 GAATCCTCGTCTTC

**ACGGTACGCGGCGCTCGAG** – GFP Tag – GTTTAA

**Protein Sequence:** >RG215451 representing NM\_001039111  
 Red=Cloning site Green=Tags(s)

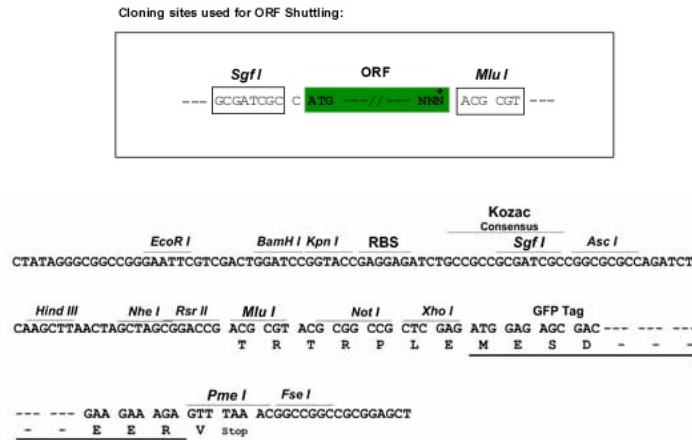
MASFPETDFQICLLCKEMCGSPAPLSSNSSASSSSSTSTSSGGGGGGPAAAARRLHVLPC LHAFRCRCL  
 EAHRLPAAGGGAAGEPLKLRCPVCDQKVLAEAAGMDALPSSAFLLSNLLDAVVATADEPPPKNGRAGAP  
 AGAGGHSNHRHHHAHPRASASAPLPQAPQPPAPSRAPGPAASPSALLLRRPHGCSSCDEGNAASS  
 RCLDCQEHLCDNCVRAHQVRVRLTKDHYIERGPPGPGAAAAAQQQLGLGPPFPGPPFSILSVFPERLGFCQH  
 HDDEVLHL YCDTCSVPICRECTMGRHGGHFSIYLQEALQDSRALTIQLLADAQQGRQAIQLSIEQAQTVA  
 EQVEMKAKVVQSEVKAVTARHKKALEERECELLWKVEKIRQVKAKSLYLQVEKLRQNLNKLESTISAVQQ  
 VLEEGRALDILLARDRMLAQVQELKTVRSLLQPQEDDRVMFTPPDQALYLAIKSFGFVSSGAFAPLTKAT  
 GDGLKRALQGVASFTVIGYDHDGEPRLSGGDLMSAVVLGPDGNLFGAEVSDQQNGTYVVSYPQLEGEH  
 LVSVTLCNQHIENSFPKVVVKSGRSYVIGLPLGSLFGSEGSDGKLCRPWGVSVDKEGYIIVADRSNNRI  
 QVFKPCGAFHHKFGTLGSRPQFDRPAGVACDASRRIVVADKDNHRIQIFTFEQFL LKFGEKGTKNQF  
 NYPWDVAVNSEGKILVSDTRNHRIQLFGPDGVFLNKYGFEGALWKHFDSPRGVAFNHEGHLVVTDFNNHR  
 LLVIHPDCQSARFLGSEGTGNGQFLRPQGVAVDQEGRIIVADSRNHRVQMFESNGSFLCKFGAQGSGFGQ  
 MDRPSGIAITPDGMIVVDFGNNRILVF

TRTRPLE - GFP Tag - V

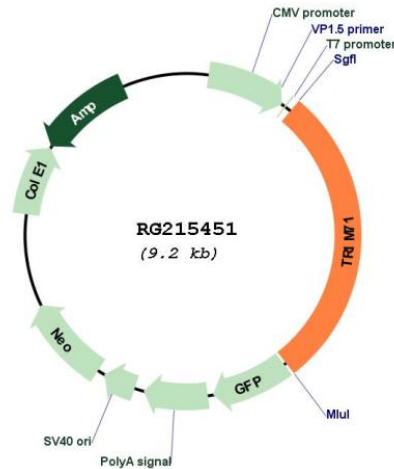
**Restriction Sites:**

SgfI-MluI

**Cloning Scheme:**



## Plasmid Map:



ACCN: NM\_001039111

ORF Size: 2604 bp

**OTI Disclaimer:** Due to the inherent nature of this plasmid, standard methods to replicate additional amounts of DNA in *E. coli* are highly likely to result in mutations and/or rearrangements. Therefore, OriGene does not guarantee the capability to replicate this plasmid DNA. Additional amounts of DNA can be purchased from OriGene with batch-specific, full-sequence verification at a reduced cost. Please contact our customer care team at [custsupport@origene.com](mailto:custsupport@origene.com) or by calling 301.340.3188 option 3 for pricing and delivery.

The molecular sequence of this clone aligns with the gene accession number as a point of reference only. However, individual transcript sequences of the same gene can differ through naturally occurring variations (e.g. polymorphisms), each with its own valid existence. This clone is substantially in agreement with the reference, but a complete review of all prevailing variants is recommended prior to use. [More info](#)

**OTI Annotation:** This clone was engineered to express the complete ORF with an expression tag. Expression varies depending on the nature of the gene.

**Components:** The ORF clone is ion-exchange column purified and shipped in a 2D barcoded Matrix tube containing 10ug of transfection-ready, dried plasmid DNA (reconstitute with 100 ul of water).

**Reconstitution Method:**

1. Centrifuge at 5,000xg for 5min.
2. Carefully open the tube and add 100ul of sterile water to dissolve the DNA.
3. Close the tube and incubate for 10 minutes at room temperature.
4. Briefly vortex the tube and then do a quick spin (less than 5000xg) to concentrate the liquid at the bottom.
5. Store the suspended plasmid at -20°C. The DNA is stable for at least one year from date of shipping when stored at -20°C.

RefSeq: [NM\\_001039111.3](#)

RefSeq Size: 3138 bp

RefSeq ORF: 2607 bp

Locus ID: 131405

UniProt ID: [Q2Q1W2](#)

Cytogenetics: 3p22.3

**Gene Summary:** The protein encoded by this gene is an E3 ubiquitin-protein ligase that binds with miRNAs and maintains the growth and upkeep of embryonic stem cells. This gene also is involved in the G1-S phase transition of the cell cycle. [provided by RefSeq, Dec 2015]