

Product datasheet for **RG215369**

CHD8 (NM_020920) Human Tagged ORF Clone

Product data:

Product Type:	Expression Plasmids
Product Name:	CHD8 (NM_020920) Human Tagged ORF Clone
Tag:	TurboGFP
Symbol:	CHD8
Synonyms:	AUTS18; HELSNF1
Mammalian Cell Selection:	Neomycin
Vector:	pCMV6-AC-GFP (PS100010)
E. coli Selection:	Ampicillin (100 ug/mL)
ORF Nucleotide Sequence:	>RG215369 representing NM_020920 Red=Cloning site Blue=ORF Green=Tags(s)

TTTTGTAATACGACTCACTATAGGGCGGCCGGAATTCGTCGACTGGATCCGGTACCGAGGAGATCTGCC
GCC**CGATCGCC**

ATGAAGGGTGAATCGAAACGCATCACCCCTGGTCTCCAGCAGCCACAGTCTGGAGGTCCCCAAGGACATC
GGCATGTTGTGCTAGGGAGTCTACCAGGCAAGATAGTGTACAGGGCAACCAGCTGGCAGCCCTGACTCA
AGCCAAGAATGCCAAGGGCAGCCTGCCAAGGTAGTAACATCCAGCTGCAGGTGCAGCAGCCACAGCAA
AAAATCCAGATTGTACCACAACCACCATCATCGCAGCCACAGCCCCAGCAGCCACCCTCCACCCAGCCAG
TGACTCTGCTCTGTACAGCAGGCTCAGATAATGGGACCAGGACAAAGCCAGGACAAAGACTTTCAGT
ACCAAGTCAAGGTGGTACTGCAGCCACAGGCTGGCTCTTCCAAGGGCCCTTCTGGGCTCTCTGTAGTT
AAAGTTCTGAGTGCCAGTGAAGTGGCAGCTTGTTCATCACCAGCAAGCTCTGCTCCTCATTCCGGGGGAA
AGACAGGAATGGAGGAAAACCGCAGATTGGAACACCAGAAGAAGCAAGAGAAAAGCAAATCGGATTGTAGC
AGAGGCCATTGCGAGAGCCCGTGGCCGCGGTGAGCAGAACATACCTCGAGTCTTAAATGAGGACGAGTTG
CCCAGCGTTCGGCCAGAGGAGGAAGGCGAGAAGAAACCGCAGGAAGAAGAGTGTGGGGAGAGGCTGAAAG
AGGAGAAGCCAAAGAAGAGTAAAACATCTGGTGCCTCCAAAACAAAGGGCAAGAGCAAGCTCAACACCAT
CACTCCTGTAGTGGTAAAGAAGAGAAAACGTAATACCTCATCTGATAATTCAGATGTGGAAGTCATGCCT
GCACAGTCACCTCGAGAAGATGAAGAAAGCAGCATTTCAGAAGAGACGCTCAAACCCCAAGTTAAGCGAA
AAAAATATACAGAGGACCTGGATATAAAGATCACAGATGATGAAGAAGAAGAAGAGGTGGATGTAACCTGG
TCCAATAAAACCTGAGCCTATCCTCCCTGAACCAAGTGCAGAAACAGATGGCGAGACTTTGCCTTCCATG
CAGTTCTTTGTGGAGAATCCCAGTGAAGAAGATGCAGCCATTGTAGACAAAGTGTCTTCTATGCGGATTG
TGAAGAAGGAGCTCCCTTCTGGACAATATACTGAAGCAGAAGAATTCTTTGTCAAGTACAAGAATACTC
CTATCTGCATTGTGAATGGGCTACTATCTCCAACTAGAGAAGGATAAGAGGATACATCAAAAATTAAG
CGCTTCAAACCAAAAATGGCTCAGATGAGACACTTCTCCATGAGGATGAAGAGCCCTTAAATCCAGACT
ACGTAGAGGTGGATAGGATATTGGATGAGTCTCACAGTATTGACAAGGACAATGGGGAGCCCGTTATTTA
CTACCTGGTGAATGGTCTCTCTGCCCTATGAGGATAGCACATGGGAGCTAAAAGAAGATGTTGATGAG



[View online »](#)

GGCAAGATTCGAGAATTTAAACGGATTCAGTCAAGGCACCCAGAACTCAAAGGGTGAATCGTCCGCAGG
CAAGTGCCTGGAAGAAATTTGGAGCTATCACATGAATATAAAAACAGAAACCAGCTACGGGAATATCAGTT
GGAAGGGGTTAATTTGGCTGCTCTTAATTTGGTATAACAGGCAGAACTGCATCCTGGCTGATGAGATGGGA
TTGGGCAAAACTATTCAGTCCATTGCCTTCTTGCAGGAAGTATAAATGTGGGCATCCATGGTCCCTTCT
TGGTCATTGCCCCACTGTCCACAATTAACACTGGGAGCGAGAATTTAATACATGGACAGAAATGAACAC
TATTGTGTACCATGGCAGTCTGGCCAGCAGGCAGATGATCAACAGTATGAAATGTAAGTCAAAAGATTCA
CGGGGACGCCTCATCCAGGCGCATACAAGTTTGACGCTCTGATCACCCTTTTGAGATGATTTTGTCCAG
ATTGTCCTGAGCTTCGTGAAATTTGAATGGCGTTGTGTTATCATTGATGAAGCCCATCGACTGAAAAACCG
TAATTGCAAGCTGCTTGATAGTCTCAAGCACATGGACCTGGAACACAAGGTGCTACTCACAGGAACACCA
TTGCAAAATACTGTAGAAGAAGTGTAGCTTGTCTTATTCTTGGAACCGTCACAATTTCCCTCAGAAT
CAGAGTTTCTCAAGGACTTTGGGGATCTCAAGACAGAGGAACAGGTTCAAAGCTACAGGCCATTCTTAA
GCCAATGATGCTGAGAAGACTCAAAGAGGATGTTGAAAAAACTTGCACCCAAACAGGAAACAATTATT
GAAGTAGAGCTGACTAATATCCAGAAGAAATACTATCGGGCTATTTTGGAGAAGAATTTCTCCTCCTTT
CCAAAGGGGCAGGTCATACCAACATGCCTAATCTACTTAACACAATGATGGAGTTGCGCAAGTGTGCAA
CCACCCATATCTCATCAATGGTGTGAAGAAAAATCCTAACAGAATTCGTGAAGCTTGCCATATTATA
CCTCATGACTTTACCTGCAGGCCATGGTTCGTTCAAGCCGGCAAACCTGGTTCCTATTGACAAAGTTGCTTC
CAAAGCTTAAAGCTGGTGGCCATAAAGTTCTGATCTTCTCTCAGATGGTGCCTGCTTAGACATCCTAGA
GGATTATTTAATCCAGAGGAGGTAATATGAACGATTTGATGGGCGAGTTAGAGGCAACCTTCGACAG
GCTGCCATTGACCGCTTCAGCAAGCCTGACTCAGACCGCTTTGTCTTCTACTGTGTACCCGGGCTGGTG
GACTTGGTATTAATCTTACAGCTGCTGATACCTGCATCATCTTTGATTGAGACTGGAATCCACAAAATGA
CCTGCAGGCCAGGCACGATGTCATCGAATTTGGCAGAGCAAAGCTGTGAAGGTGTAACCGCTCATCACT
CGTAATTCCTACGAGAGAGAGATGTTTGATAAGGCCAGCCTCAAGTTGGGGTTGGATAAGGCTGTGACTT
AATCCATGAGTGGTGGGATGGCAACATTAAGGAAATCCAACAGTCTCTAAGAAGGAGATTGAAGACTCT
TTTAAGAAAAGGAGCATATGCAGCCATCATGGAGGAAGATGATGAAGGCTCCAAGTTTTGTGAAGAGGAC
ATTGACCAGATCTTGTTAAGACGAACTACAACCATCACCATTGAATCTGAAGGAAAAGGTTCCACCTTTG
CTAAGGCAAGCTTTGTTGCTTCTGAAAACAGGACAGATATTTCTTTGGATGACCCCAACTTTTGGCAAAA
GTGGGCCAAAAAGGCTGACCTAGACATGGATCTGCTCAACAGCAAGAATAATTTGGTAATTGACACACCT
AGAGTACGAAAACAAACGCGCCACTTTAGCACTCTGAAAGATGATGACCTGGTGGAAATCTCTGATTTGG
AAAGTGAAGATGATGAGCGGCCACGCTCCCGCAGACATGACCGTCATCATGCCTATGGGCGCACTGACTG
CTTTCCGGTGGAAAAGCATCTCCTGGTATATGGTTGGGGACGATGGCGAGATATTTATCTCATGGACGC
TTCAAGCGACGTATGACTGAACGAGATGTGGAGACCATTGTGCGGCCATTCTCGTGTACTGTCTTCTAC
ACTACCGTGGGGATGAAAATATTAAGGCTTCATCTGGGACTTGATTAGCCAGCTGAAAATGGCAAGAC
AAAAGAATTGAGAATCATTGAGTCTATCTATCCCTGTGCTCGTGACGCAAAGGAAAAAAGTAAAG
TCACAAAGCACTTTTGATATCCATAAGGCAGATTGGATCCGGAATATAACCCTGACACTTTGTTCCAAG
ATGAAAGTTATAAGAAGCACTTGAACATCAGTGTAAACAGGTAAGTGTGCGGGTACGAATGCTATACTA
CCTGAGGCAGGAGGTTATTGGAGACCAAGCAGAAAAGGTTAGGGGGTGCAGATTGCCAGTGAGATTGAC
ATATGGTCCCAGTAGTGGATCAACTGGAGGTTCCAACAACCTGGTGGGACAGTGAAGGTCACAAGTCCG
TGCTCATTGGAGTCTTTAAACATGGCTATGAGAAAATAAATACCATGAGGGCAGACCCAGCCTTATGTTT
CCTAGAAAAGGCTGGCCGACCAGATGACAAAGCAATTGCAGCAGAACTCGAGTGTGGATAACTTCTCT
GACATAGTAGAAGGGTTGACTTTGATAAAGATTGTGAAGATCCTGAATATAAACCCTCAAGGTCCTCC
CAAAGGACCAAGATGATGAGGTTGATCCCTGATGATGATGGATGAGGAGATCTCAGTATTGATGGAGA
TGAAGCCAGGTGACCCAACAGCCAGGCCATTTATTCTGGCTCCGGGCTGACCCTAACAGCTAGGCTT
CGGCGTCTAGTAACAGCGTATCAGCGCAGCTACAAGAGAGAACAATGAAGATAGAGGCTGCAGAACGTG
GGGACCGCGAAGGCGCGTGTGAAGCAGCCTTCAAGCTGAAAGAAATGCACGGCGGGAGAAACAACA
ACGATGGACAAGGCGTGAACAACTGATTTTTATCGAGTGGTGTCTACGTTTGGTGTGGAATATGACCT
GACACCATGCAGTTCATTGGGATCGCTCCGCACCTTTGCTCGACTAGACAAAAGACAGATGAAAGCC
TTACCAAGTACTCCATGGCTTTGTGGCATGTGCGCCAAGTATGCCGCTTCCCCAGCAGCTGGAGA
TGAACCCCGCAGCCTAACCTGTTCAATTGAGCCATCACTGAGGAGAGAGCCTCACGGACTCTTACCCT
ATAGAATTGCTTCGGCGCTTACGGGAACAAGTTTTATGCCACCCCTTTTGAAGATCGGCTGGCATTGT
GTCAGCCTCCTGGTCTGAATTTGCCAAATGGTGGGAGCCTGTTCCGCATGATGGGGAGCTTCTAAGAGG
GGCAGCCCGCATGGGGTGAAGCAACAGACTGCAACATCATGCAGGACCCAGACTTCTCTTTTCTGGCT
GCCCGTATGAATTATATGCAGAACCATCAAGCAGGAGCACCAGCTCCATCCTTGTACGCTGCTCTACTC

CACTGCTGCACCAGCAGTATACCTCACGCACTGCCTCACCACTGCCCTGCGCCCAGATGCTCCTGTTGA
AAAGTCACCCGAGGAGACAGCTACCCAGGTCCCCAGTCTGGAGAGTCTGACTTTAAAGCTAGAGCACGAG
GTGGTGGCCAGGAGCCGACCAACCCACAAGACTATGAGATGCGAGTATCCCCCTCTGATACTACCCCTC
TGGTTTCCCGAGTGTCCACCAGTCAAAGTGGAGGATGAGGATGATTCCGACTCTGAGCTGGACTTGAG
CAAGCTGCACCATCTTCTTCTTCTCCTATCCTCATCCAGTCCAGCTCCAGCACTGATGAGAGTGAG
GATGAGAAGGAAGAGAAGCTAACTGACCAGTCCCGCTCAAAGCTATGATGAAGAGAGTCTCCTGTCCC
TCACTATGTCCCAAGATGGATTCCCAAATGAAGATGGAGAACAATGACCCCTGAGCTTCTGCTACTGCA
GGAAAGACAAAGAGCCTCTGAGTGGCCCAAGGATCGTGTCTGATAAACCGTATTGACCTCGTCTGCCAG
GCTGTA CTCTCAGGGAAGTGGCCTTCTAGCCGTAGGAGCCAGGAAATGGTAACAGGAGGAATTTTGGGGC
CAGGCAACCACCTTGCTAGACAGTCCCTCATTGACTCCTGGAGAATATGGTGACTCTCCAGTCCCCACACC
ACGAAGTAGTAGTGCAGCTTCCATGGCAGAGGAGGAAGCATCTGCAGTCAGCACAGCGGCAGCCAGTTC
ACCAAACCTTCGCCGAGGCATGGATGAAAAGGAGTTTACAGTTCAAATCAAAGATGAGGAAGGATTGAAGT
TAACATCCAGAAGCACAAGTTGATGGCGAATGGAGTAATGGGAGATGGACATCCACTGTTTCATAAGAA
GAAGGGGAACAGAAAGAAGCTAGTAGAGCTGGAGGTGGAGTGCATGGAAGAGCCTAATCACCTTGATGTG
GACCTGGAGACCCGGATCCCTGTCATCAATAAGGTGGATGGTACTTTGCTGGTGGTGAGGATGCCCTC
GCCGGGTGAACCTGGAGATGTGGTTACAGGGTCACTCCAGAGTTTCTGCTGTTGATCCCCGATTCTAGCGTA
TATGGAGGATCGCAGAAAACAGAAGTGGCAAAGATGTAAAAAATAAATAGGCAGAATTGAACTGTTTG
GGAATGGAACAGTACAGACAGCTAACTCTAGAAATGGGAAAAAGGGTCACTCACACTGAAACGGTGTTC
ACCGGGTTTTGCCAGGGCCTATTGCACCAGAGAGCAGCAAGAAGCGGGCCCGTAGGATGCGACCAGACCT
TTCTAAGATGATGGCCCTCATGCAGGGTGAAGCACTGGGTCTCTATCTCTGCATAACACGTTCCAACAC
AGCAGTAGTGGCCTACAGTCTGTGTCATCTTTGGGTCACAGCAGTGCCACTTCTGCATCTTTGCCTTTA
TGCCATTTGTGATGGGTGGTGCACCATCATCCCCTCATGTAGACTCCAGCACCATGCTTCATCACCACCA
CCACCACCCACCCACCATCACCACCATCACCATCCAGGCTTGAGAGCCCCGGCTACCCCTTTCA
CCAGTGACTACCGCTCTGGTACTACCTTGCGGTTGCCACCACTGCAACCTGAGGAGGATGACGATGAGG
ATGAAGAAGATGATGATGACTTATCTCAGGGCTATGATAGCTCAGAAAGGGACTTCTCACTCATTGATGA
TCCTATGATGCCAGCTAACTCAGACTCCAGTGAAGATGCTGATGAC

ACGCGTACGCGGCCGCTCGAG - GFP Tag - GTTTAA

Protein Sequence:

>RG215369 representing NM_020920
 Red=Cloning site Green=Tags(s)

```

MKGESKRITLVLQQPQSGGPQGHRHVVLGSLPGKIVLQGNQLAALTQAKNAQGQPAKVVVTIQLVQVQQPQQ
KIQIVPQPPSSQPQPQPPSTQPVTLSSVQQAQIMGPGQSPGQRLSVPVKVVLQPQAGSSQGASSGLSVV
KVL SASEVAALSSPASSAPHSGGKTGMEENRRLHQQKQEKANRIVAEAIARARARGEQNIPRVLNEDEL
PSVRPEEEGEKRRRKSAGERLKEEKPKKSKTSGASKTKGKSKLNTITPVVGGKRRKNTSSDSDVEVMP
AQSPREDEESSIQRRSNRQVKRKYTEDLDIKITDDEEEEEEVDVTGPIKPEPILPEPVQEPDGETLPSM
QFFVENPSEEDAIVDKVLSMRIVKKELPSGQYTEAEFFVKYKNYSYLHCEWATISQLEKDRIHQKLLK
RFKTKMAQMRHFFHEDEEFPNDYVEVDRIIDESHSDKDNQEPVIYYLVKWCSLPYEDSTWELKEDVDE
GKIREFKRIQSRHPELKRVRNPQASAWKLELSHEYKRNQLREYQLEGVNWLFFNWNRNQCILADEMG
LGKTIQSI AFLQEVYVNGIHPFLVIAPLSTITNWEREFNTWEMNTIVYHGSLASRQMIQQYEMYCKDS
RGRILIPGAYKFDALITTFEMILSDCPELREIEWRCVIIDEAHLKRNCKLLDSLKHMDLEHKVLLTGTP
LQNTVEELFSLHLFLEPSQFSESEFLKDFGDLKTEEQVQKLQAILKPMMLRRLKEDVEKNLAPKQETII
EVELTNIQKYYRAILEKNFSFLSKGAGHTNMPNLLNTMMELRCCNHPYLINGAEKILTEFREACHII
PHDFHLQAMVRSAGKLVLDKLLPKLKAGGHKVLIFSQMVRCLDILEDYLIQRRYLYERIDGRVRGNLRQ
AAIDRFKSPDSDRFVFLCTRAGGLGINLTAADTCIIFDSDWNPQNDLQQAARCHRIGQSKAVKYVRLIT
RNSYEREMFDKASLKLGLDKAVLQSMSGRDGNITGIQQFSKKEIEDLLRKGAYAAIMEEDEDGSKFCEED
IDQILLRRTTITIESEGKGFSAKASFVAENRTDISLDDPNFWQKAKKADLMDLLNSKNNLVIDTP
RVRKQTRHFSTLKDDDLVEFSDLESEDDERPRRRHRHAYGRTDGFRVEKHLLVYGGWRWRDILSHGR
FKRRMTERDVETICRAILVYCLLHYRGDENIKGFIWDLISPAENKTKELQNHSGLSIPVPRGRKGGKVK
SQSTFDIHKADWIRKYNPDTLFDQESYKHLKHQCNKVLLRVRMLYYLRQEVIGDQAEKVLGGAIASEID
IWFPPVDQLEVPPTTWDSEADKSLIGVFKHGYEKYNTMRADPALCFLEKAGRPDCKAIAAEHRVLDNFS
DIVEGVDFDKCEDPEYKPLQGPDKDQDEGDPLMMDEEISVIDGDEAQVTQPGHLFWPPGSALTARL
RRLVTAYQRSYKREQMKIEAAERGDRRRRCEAAFKLKEIARREKQQRWTRREQTDFYRVVSTFGVEYDP
DTMQFHWDRFRTFARLDKKTDES LTKYFHGFVAMCRQVCRLPPAAGDEPPDPNLFIEPITEERASRTLYR
IELLRRLREQVLCHPLLEDRLALCQPPGPELKWWEVVRHDGELLRGAARHGVSQTDNCIMQDPDFSLFA
ARMNYMQNHQAGAPAPSLSRCSTPLHQQYT SRTASPLLRPDAPVEKSPEETATQVPSLESLLKLEHE
VVARSRPTPQDYEMRVSPSDTTPLVSRVPPVKLEDEDDSDSELDSLSPSSSSSSSSSSSSSTDESE
DEKEEKLTDQSRSKLYDEESLLSLTMSQDGFNEDGEQMTPELLLQERQRASEWPKDRVLINRIDLVCQ
AVLSGKWPSSRRSQEMVTGGILGPGNHLLDSPSLTPGEYGDSPVPTPRSSAASMAEEEEASAVSTAAAQF
TKLRRGMDEKEFTVQIKDEEGLKLTQKHKLMANGVMGDGHPLFHKKKGNRKLVLEVECEMEEPNHLDV
DLETRIPVINKVDGTLVGEDAPRRAELEMWLQGHPEFAVDPRFLAYMEDRRKQKQWRCKKNKNAELNCL
GMEPVQTANSRNGKKGHTTETVFNRLPGPIAPESSKKRARRMRPDL SKMMALMQGGSTGSLSLHNTFQH
SSSGLQSVSSLGHSSATSASLPFMPFVMGGAPSSPHVDSSTMLHHHHHPHPPHHHHHPGLRAPGYPS
PVTTASGTTLRPLQPEEDDEDEEDDDLSQGYDSSERDFSLIDPMPANSDSSEDADD
  
```

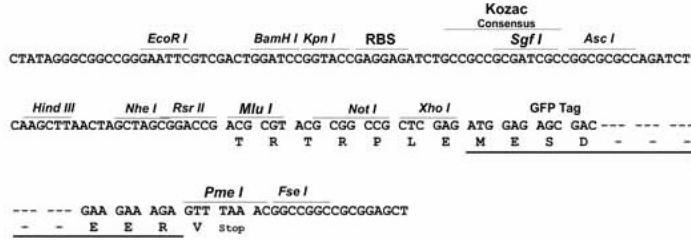
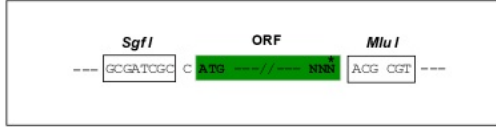
TRTRPLE - GFP Tag - V

Restriction Sites:

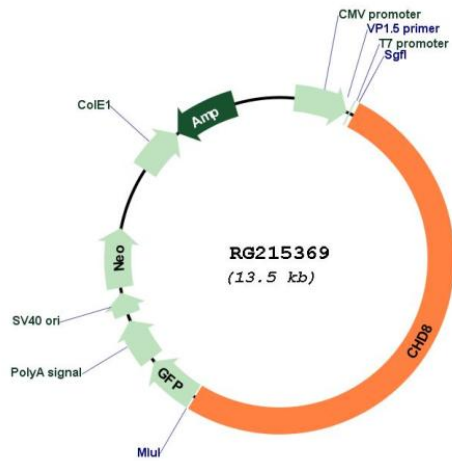
Sgfl-MluI

Cloning Scheme:

Cloning sites used for ORF Shutting:



Plasmid Map:



ACCN: NM_020920
 ORF Size: 6906 bp

OTI Disclaimer:	<p>Due to the inherent nature of this plasmid, standard methods to replicate additional amounts of DNA in E. coli are highly likely to result in mutations and/or rearrangements. Therefore, OriGene does not guarantee the capability to replicate this plasmid DNA. Additional amounts of DNA can be purchased from OriGene with batch-specific, full-sequence verification at a reduced cost. Please contact our customer care team at custsupport@origene.com or by calling 301.340.3188 option 3 for pricing and delivery.</p> <p>The molecular sequence of this clone aligns with the gene accession number as a point of reference only. However, individual transcript sequences of the same gene can differ through naturally occurring variations (e.g. polymorphisms), each with its own valid existence. This clone is substantially in agreement with the reference, but a complete review of all prevailing variants is recommended prior to use. More info</p>
OTI Annotation:	<p>This clone was engineered to express the complete ORF with an expression tag. Expression varies depending on the nature of the gene.</p>
Components:	<p>The ORF clone is ion-exchange column purified and shipped in a 2D barcoded Matrix tube containing 10ug of transfection-ready, dried plasmid DNA (reconstitute with 100 ul of water).</p>
Reconstitution Method:	<ol style="list-style-type: none">1. Centrifuge at 5,000xg for 5min.2. Carefully open the tube and add 100ul of sterile water to dissolve the DNA.3. Close the tube and incubate for 10 minutes at room temperature.4. Briefly vortex the tube and then do a quick spin (less than 5000xg) to concentrate the liquid at the bottom.5. Store the suspended plasmid at -20°C. The DNA is stable for at least one year from date of shipping when stored at -20°C.
RefSeq:	NM_020920.4
RefSeq Size:	7499 bp
RefSeq ORF:	6909 bp
Locus ID:	57680
UniProt ID:	Q9HCK8
Cytogenetics:	14q11.2
Protein Pathways:	Wnt signaling pathway
Gene Summary:	<p>This gene encodes a member of the chromodomain-helicase-DNA binding protein family, which is characterized by a SNF2-like domain and two chromatin organization modifier domains. The encoded protein also contains brahma and kismet domains, which are common to the subfamily of chromodomain-helicase-DNA binding proteins to which this protein belongs. This gene has been shown to function in several processes that include transcriptional regulation, epigenetic remodeling, promotion of cell proliferation, and regulation of RNA synthesis. Allelic variants of this gene are associated with autism spectrum disorder. Alternative splicing results in multiple transcript variants. [provided by RefSeq, Dec 2016]</p>