

## Product datasheet for **RG215335**

### Protein Kinase D2 (PRKD2) (NM\_016457) Human Tagged ORF Clone

#### Product data:

Product Type:	Expression Plasmids
Product Name:	Protein Kinase D2 (PRKD2) (NM_016457) Human Tagged ORF Clone
Tag:	TurboGFP
Symbol:	Protein Kinase D2
Synonyms:	HSPC187; nPKC-D2; PKD2
Mammalian Cell Selection:	Neomycin
Vector:	pCMV6-AC-GFP (PS100010)
E. coli Selection:	Ampicillin (100 ug/mL)



[View online »](#)

**ORF Nucleotide Sequence:**

>RG215335 representing NM\_016457  
 Red=Cloning site Blue=ORF Green=Tags(s)

TTTTGTAATACGACTCACTATAGGGCGGCCGGAATTCGTCGACTGGATCCGGTACCGAGGAGATCTGCC  
 GCC**CGCATCGCC**

ATGGCCACCGCCCCCTTTATCCCGCCGGGCTCCCTGGCTCTCCCGGCCGGGTCTCCTCCGCCCCCG  
 GCGGCCTAGAGCTGCAGTCGCCGCCACCGCTACTGCCCCAGATCCCGGCCCGGGTTCGGGGTCTCCTT  
 TCACATCCAGATCGGGCTGACCCGCGAGTTCGTGCTGTTGCCCGCCGCTCCGAGCTGGCTCATGTGAAG  
 CAGCTGGCCTGTTCCATCGTGGACCAGAAGTTCCTGAGTGTGGCTTCTACGGCCTTTACGACAAGATCC  
 TGCTTTTCAAACATGACCCACGTCGGCCAACCTCCTGCAGCTGGTGGCTCGTCCGGAGACATCCAGGA  
 GGGCGACTGGTGGAGGTGGTGTGTGGCCTCGGCCACCTTCGAGGACTTCAGATCCGCCCGCACGCC  
 CTCACGGTGCCTCTATCGGGCCTGCCTTCTGTGATCACTGCGGGGAGATGCTCTTCGGCCTAGTGC  
 GCCAGGGCCTCAAGTGCATGGTGGGGCTGAACACCACAAGCGCTGTGCCTCAGCATCCCCAACAA  
 CTGTAGTGGGGCCGCAAACGGCGCTGTATCCACGTCTCTGGCCAGTGGCCACTCGGTGCGCCTCGGC  
 ACCTCCGAGTCCCTGCCCTGCACGGCTGAAGAGCTGAGCCGTAGCACCACCGAACCTCGCTCGCCGTC  
 CCCCCTCATCCTTCTCCTCTTCTGCCTCATCGTATACGGGCCGCCATTGAGCTGGACAAGATGCT  
 GCTCTCAAGGTCAAGGTGCCGCACACCTTCTCATCCACAGCTATACACGGCCACCGTTTGCCAGGCT  
 TGCAAGAACTCCTCAAGGGCCTTCCGGCAGGGCCTGCAATGCAAAGACTGCAAGTTTAACTGTCACA  
 AACGCTGCGCCACCCGCTCCCTAATGACTGCCTGGGGGAGGCCCTTATCAATGGAGATGTGCCGATGGA  
 GGAGGCCACCGATTTAGCGAGGCTGACAAGAGCGCCCTCATGGATGAGTCAAGGACTCCGGTGTATC  
 CCTGCTCCCACTCAGAGAATGCGCTCCACGCCAGTGGAGGAGGAAGCGAGGGAGGCAAGGCCCAGA  
 GCTCCCTGGGGTACATCCCCCTAATGAGGTGGTCAATCGGTGCGACACACGACGCGGAAATCCAGCAC  
 CACGCTGCGGGAGGGTGGGTGGTTCATTACAGCAACAAGGACACGCTGAGAAAGCGGCACTATTGGCGC  
 CTGGACTGCAAGTGTATCACGCTTCCAGAACAACACGACCAACAGATACTATAAGGAAATTCGCTGT  
 CAGAAATCCTCACGGTGGAGTCCGCCAGAATTGAGCCTTGTGCCCGGGGACCAACCCACACTGCTT  
 TGAGATCGTCACTGCCAATGCCACCTACTTCGTGGGCGAGATGCCTGGCGGGACTCCGGGTGGCCAAAT  
 GGGCAGGGGGTGGAGCCCGGGGGTGGGAGACAGCCATCCGCCAGGCCCTGATGCCCGTATCCTTC  
 AGGACGCACCCAGCGCCAGGCCACGCCCCACAGACAAGCTTCTCTGAGCATCTCTGTGTCCAACAG  
 TCAGATCCAAGAGAATGTGGACATTGCCACTGTCTACCAGATCTCCCTGACGAAGTGTGGGCTCAGGG  
 CAGTTTGGAGTGGTCTATGGAGGAAAACACCGGAAGACAGGCCGGGACGTGGCAGTTAAGTTCATTGACA  
 AACTGCGCTTCCCTACCAAGCAGGAGAGCCAGCTCCGGAATGAAGTGGCCATTCTGCAGAGCCTGCGGCA  
 TCCCGGGATCGTGAACCTGGAGTGCATGTTGAGACGCCTGAGAAAGTGTGGTGGTGGTGGAGAAGCTG  
 CATGGGGACATGTTGGAGATGATCCTGTCCAGTGAAGGGCCGGCTGCCTGAGCGCCTACCAAGTTCC  
 TCATCACCCAGATCCTGGTGGCTTTGAGACACCTTCACTTCAAGAACATTGTCCACTGTGACTTGAACCC  
 AGAAAACGTGTTGCTGGCATCAGCAGACCCATTTCCCTCAGGTGAAGTGTGTGACTTTGGCTTTGCTCGC  
 ATCATCGCGGAGAAGTCGTTCCGCCGCTCAGTGGTGGGCACGCCGGCCTACCTGGCACCCGAGGTGCTGC  
 TCAACCAAGGCTACAACCGCTCGCTGGACATGTGGTCAAGTGGCGTGTATCATGTACGTGACGCTCAGCGG  
 CACCTTCCCTTTCAACGAGGATGAGGACATCAATGACCAGATCCAGAACGCCCGCTTATGTACCCGGCC  
 AGCCCTGGAGCCACATCTCAGCTGGAGCCATTGACCTCATCAACAACCTGCTGCAGGTGAAGATGCGCA  
 AACGCTACAGCGTGGACAAATCTCTCAGCCACCCCTGGTTACAGGAGTACCAGACGTGGCTGGACCTCCG  
 AGAGCTGGAGGGGAAGATGGGAGAGCGATACATCACGCATGAGAGTGACGACGCGCCTGGGAGCAGTTT  
 GCAGCAGAGCATCCGCTGCCTGGTCTGGGCTGCCACGGACAGGGATCTCGGTGGGGCTGTCCACCAC  
 AGGACCACGACATGCAGGGGCTGGCGGAGCGCATCAGTGTCTC

**ACGCGT**ACGCGGCCGCTCGAG - GFP Tag - GTTTAA

**Protein Sequence:** >RG215335 representing NM\_016457  
 Red=Cloning site Green=Tags(s)

```

MATAPSYAGLPGSPGPGSPPPPGGLELQSPPLLQIPAPGSGVSFHIQIGLTREFVLLPAASELAHVK
QLACSIDVQKFPCEGFLYDKILLFKHDPTSANLLQLVRSSGDIQEGDLVEVLSASATFEDFQIRPHA
LTVHSYRAPAFCDHCSEMFLGLVRQGLKCDGGLNYHKRCASFIPNNCSGARKRRLSSTSLASGHSVRLG
TSESLPCTAEELSRSTTELLPRPPSSSSSSASSYTGRIELDKMLLSKVVPHTFLIHSYTRPTVCQA
CKLLKGLFRQGLQCKDKFNCHKRCATRVNDCLGEALINGDVPMEEDDFSEADKSALMDESEDSGVI
PGSHSENALHASEEEEEEGGKAQSSLGYIPLMRVVQSVRHTTRKSSTTLREGVWVHYSNKDTLRKRHYWR
LDCKCITLQNNTTNRYYEIPLSEILTVESAQNFLVPPGTNPHCFEIVTANATYFVGEMPGGTPGGPS
GQGAEAARGWETAIRQALMPVILQDAPSAPGHAPHRQASLSISVNSQIQENVDIATVYQIFPDEVLGSG
QFGVVYGGKHKRTGRDVAVKVIDKLRFP TKQESQLRNEVAIQLSLRHPGIVNLECMFETPEKVFVMEKL
HGDMLEMILSSEKGRLEPERLTKFLITQILVALRHLHFKNIVHCDLKPENVLLASADFPQVKLCDFGAR
IIGEKSFRRSVVGTPAYLAPEVLLNQGYNRSMDMWSVGVIMYVLSGTFPFNEDEDINDQIQNAAFMYPA
SPWSHISAGAIDLINLLQVKMRKRYSDKSLSHPWLQEYQTWLDLRELEGKMGERYITHESDDARWEQF
AAEHPLPGSGLPTDRDLGGACPPQDHDMDQGLAERISVL
  
```

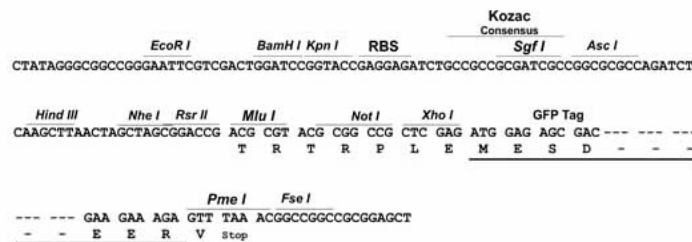
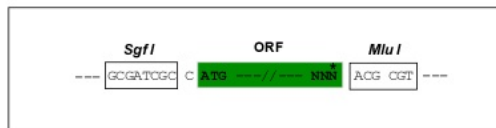
TRTRPLE - GFP Tag - V

**Restriction Sites:**

SgfI-MluI

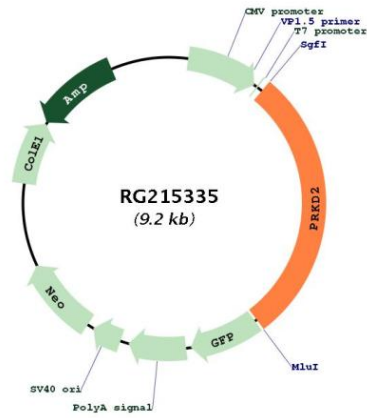
**Cloning Scheme:**

Cloning sites used for ORF Shuttling:



<b>ACCN:</b>	NM_016457
<b>ORF Size:</b>	2634 bp
<b>OTI Disclaimer:</b>	The molecular sequence of this clone aligns with the gene accession number as a point of reference only. However, individual transcript sequences of the same gene can differ through naturally occurring variations (e.g. polymorphisms), each with its own valid existence. This clone is substantially in agreement with the reference, but a complete review of all prevailing variants is recommended prior to use. <a href="#">More info</a>
<b>OTI Annotation:</b>	This clone was engineered to express the complete ORF with an expression tag. Expression varies depending on the nature of the gene.
<b>Components:</b>	The ORF clone is ion-exchange column purified and shipped in a 2D barcoded Matrix tube containing 10ug of transfection-ready, dried plasmid DNA (reconstitute with 100 ul of water).
<b>Reconstitution Method:</b>	<ol style="list-style-type: none"><li>1. Centrifuge at 5,000xg for 5min.</li><li>2. Carefully open the tube and add 100ul of sterile water to dissolve the DNA.</li><li>3. Close the tube and incubate for 10 minutes at room temperature.</li><li>4. Briefly vortex the tube and then do a quick spin (less than 5000xg) to concentrate the liquid at the bottom.</li><li>5. Store the suspended plasmid at -20°C. The DNA is stable for at least one year from date of shipping when stored at -20°C.</li></ol>
<b>RefSeq:</b>	<a href="#">NM_016457.5</a>
<b>RefSeq Size:</b>	2883 bp
<b>RefSeq ORF:</b>	2637 bp
<b>Locus ID:</b>	25865
<b>UniProt ID:</b>	<a href="#">Q9BZL6</a>
<b>Cytogenetics:</b>	19q13.32
<b>Protein Families:</b>	Druggable Genome, Protein Kinase
<b>Gene Summary:</b>	The protein encoded by this gene belongs to the protein kinase D (PKD) family of serine/threonine protein kinases. This kinase can be activated by phorbol esters as well as by gastrin via the cholecystokinin B receptor (CCKBR) in gastric cancer cells. It can bind to diacylglycerol (DAG) in the trans-Golgi network (TGN) and may regulate basolateral membrane protein exit from TGN. Alternative splicing results in multiple transcript variants encoding different isoforms. [provided by RefSeq, Jul 2008]

Product images:



Circular map for RG215335