

## Product datasheet for **RG215328**

### PEG3 (NM\_006210) Human Tagged ORF Clone

#### Product data:

Product Type:	Expression Plasmids
Product Name:	PEG3 (NM_006210) Human Tagged ORF Clone
Tag:	TurboGFP
Symbol:	PEG3
Synonyms:	PW1; ZKSCAN22; ZNF904; ZSCAN24
Mammalian Cell Selection:	Neomycin
Vector:	pCMV6-AC-GFP (PS100010)
E. coli Selection:	Ampicillin (100 ug/mL)
ORF Nucleotide Sequence:	>RG215328 representing NM_006210 Red=Cloning site Blue=ORF Green=Tags(s)

TTTTGTAATACGACTCACTATAGGGCGGCCGGAATTCGTCGACTGGATCCGGTACCGAGGAGATCTGCC  
GCC**CGATCGCC**

ATGCTGCCTCAAAGCACTTGTCTGCCACCAACCTAAGAAGTCCTGGGCCCAAATCTGTATGAGCTAG  
ACAGTGACTTGACTAAGGAGCCGGATGTCATCATAGGAGAAGGTCCAACCTGACTCTGAGTTTTTTCATCA  
GAGGTTTCGGAACCTAATCTATGTGGAATTTGTTGGGCCTCGGAAGACCCTGATCAAACCTCGAAACCTC  
TGCCCTCGATTGGTTGCAGCCGGAGACCCGACCAAGGAGGAGATCATCGACTCTTGGTCCCTTGAGCAGT  
ACCTGACCATCATCCCTGAAAAGCTCAAGCCTTGGGTGCGAGCAAAAAGCCGGAGAAGTGTGAGAAGCT  
CGTCACTCTGCTGGAGAATTACAAGGAGATGTACCAACCAGAAGACGACAACAACAGTGACGTGACCAGC  
GACGACGACATGACCCGGAACAGAGAGAGTCCCTCACCACCTCACTCAGTCCATTCTTTCAGTGACCCGG  
ACTGGGACCGGAGGGGCAGAAGCAGAGACATGGAGCCACGAGACCCTGGTCCCACACCAGGAACCCAAG  
AAGCAGGATGCCTCCGCGGGATCTTCCCTTCTGTGGTGGCGAAAACAAGCTTTGAAATGGACAGAGAG  
GACGACAGGGACTCCAGGGCTTATGAGTCCCGATCTCAGGATGCTGAATCATACCAAAATGTGGTGGACC  
TCGCTGAGGACAGGAAACCTCACAACACAATCCAGGACAACATGGAAAATACAGGAAGCTGCTCTCCCT  
CGTGCAGCTTGTGAAGACGATGGCCACTCCCACATGACGACGGCCACTCATCAAGATCCAAGAGAAGT  
GCCTACCAAGCACCAGTTCGAGGTCTAAAACCTATGCCTGAAGCCAAAATCAACCCACCGCGGGGGA  
TTTGTGAAGATGAATCTTCCACGAGTGATAATGGAAAATTCATCAAGGATGTGTACCGCAGTTCCAA  
ATCGGGAAGAGCAAGGGAGTCAAGCGACCGGTCAAGAGATTCCCAGAATGTCAGATGATAACTGGAAG  
GACATTTTCATTGAACAAGAGGGAGTCAAGTATCCAGCAGCGGGTTTATGAAGGGAATGCATTTAGGGGAG  
GCTTTAGGTTAATTCAACCTTGTTCAGAAAAGAGAGTTCTTGAAGAAAAGAGGCGCTATCATTTTGA  
CACAGATGGGAAGGGCTCGATTCACGATCAAAAAGGCTGTCCAGGAAGAAGCCCTTTGAATGTGGTAGT  
GAGATGAGAAAAGCCATGAGCGTGAGCAGCCTGAGCAGCCTCAGTCCCCCTCCTTACCGAGTCACAGC  
CAATTGATTTGGGCAATGCCATATGTATGTGATGAGTGTGGGAGTTCAGTGTGATCTCAGAAAT  
TGTTGAGCACCAGATCATGCATACTAGAGAGAACCTCTATGAGTATGGTGTGAGTCCCTTATCCACAGTGTG



GCTGTCAGTGAAGTTCAGAAAAGTCAGGTTGGAGGGAAACGTTTTGAATGTAAGGACTGTGGAGAGACCT  
 TCAATAAGAGTGCCGCCTTGGCTGAACATCGGAAGATTATGCTAGAGGTTATCTTGTGGAATGTAAGAA  
 TCAGGAATGTGAGGAAGCCTTATGCCTAGCCCCACCTTTAGTGAGCTTCAGAAAATATATGGCAAAGAC  
 AAATTCTACGAGTGCAGGGTGTGTAAGGAAACCTTCTTCATAGTTCTGCCCTGATTGAGCACCAGAAAA  
 TCCACTTTGGGGATGACAAAGATAATGAGCGTGAACATGAACGTGAACGTGAACGTGAGCGCGGGAAAC  
 CTTTAGGCCAGCCAGCCCTTAATGAGTTTCAGAAAATGTATGGTAAAGAGAAAATGTACGAATGTAAG  
 GTGTGTGGGAGACTTTCTTCATAGCTCATCCCTGAAAGAACATCAGAAAATCCATACTAGAGGGAACC  
 CATTTGAAAACAAGGGTAAAGTGTGTGAGGAAACCTTTATTCTGGTCAGTCCCTTAAAAGCGCTCAGAA  
 AACTTACAATAAGGAGAAGCTCTGTGACTTTACAGATGGCCGGGATGCCTTCATGCAAAGCTCAGAGCTC  
 AGTGAGCATCAGAAAATTCATTCTGAAAGAACCTCTTTGAAGGCAGAGGGTATGAGAAAATCTGTCAATC  
 ATAGTGGGCCATTCACTGAATCTCAGAAGATCATACTATAACAAGACCTCTTGAAGTGTGAGGACGA  
 AAAGGCGTTCCACATTAGCTCTAACCCCTATGAAAACCAGAAGATTCCCCTAAGGAAAATGTCTATGAG  
 GCAAAATCATATGAGAGGTCTGTATTTCATAGCTTAGCCTCTGTGAAGCTCAGAAAAGTACAGGTGAG  
 CAGGGCCAGTAAACAAAAGTAAATGGCAGAGTCTACCATTAGAGCTTCGATGCTATCAACCATCAGAG  
 AGTTTCGTGCTGGAGGGAACACCTCTGAAGGAAGGGAATACAGTAGGTCTGTTATCCATAGCTTAGTGGCT  
 TCCAAACCTCCAAGAAGTCAAAATGAAATGAATTGGTGGAACTAATGAGAAGGAGAATCCTCCATTT  
 ATATCTCAGACCTTAATGATAAGCGACAGAAGATTCTGCCAGAGAGAACCCTTGTGAAGGGGGCAGTAA  
 GAATCGCAACTATGAAGACTCTGTACATACAGAGTGTATTCCGTGCCAAACCTCAGAAAAGTGTCTCTGGA  
 GAGGGATCTGGTGTGTTAAGAAGGATGGCGAATTCTCTGTTCCAGCTCAAATGTCCGTGAATACCAGA  
 AGGCTCGTGCTAAAAAGAAAATACATTGAGCATAGGAGCAATGAGACCTCTGTAATCACTCTCGCCTTT  
 TGGTGAACAAACATTTGCGCCTCGAGGGATGCTCTATGAATGTCAGGAGTGTGGGAGTGTCTTGTCTCAT  
 AGCTCTGACCTCACTGAGCACCAGAAGATTATGATAGGGAAGCCCTCTGGAAGCAGAAAATGTAAT  
 GGTCTGTCAATCGCAGCTTGGCCCTACTGACCCTCAAACAAGTACGCCCAAGAGCAGTATGCTAAAGA  
 GCAAGCGCGGAACAATGTAAGGACTTCAGACAATTTTTTGTACCAGCGAAGACCTCAACACAAAACAG  
 AAAATCTATGACCAAGAGAAGTCTCATGGCGAGGAGTCTCAAGGCGAGAATACTGATGGGAGGAGACCC  
 ACAGCGAGGAGACCCATGGTCAGGAGACAATTGAAGACCTGTCAATCAAGGCTCAGACATGGAAGACCC  
 TCAGAAGGATGACCCTGATGACAAAATCTATGAATGTGAGGACTGTGGCCTGGGCTTTGTGGATCTCACA  
 GACCTCACAGACCATCAGAAAAGTCCACAGCAGGAAGTGCCTGGTTGACAGTGGGAGTACACACATTCTG  
 TAATTCACACCCATTCCATCAGCGAGTATCAGAGAGATTACACTGGAGAGCAGCTGTATGAATGTCCAAA  
 GTGTGGGGAATCTTTTATTCATAGCTCATTCTTTTCGAGCATCAGAGAATCCATGAACAAGACCAGTTG  
 TATTCCATGAAGGGGTGTGATGATGGTTTTATTGCCCTCTGCCATGAAGCCACGGAGGAATCGTGCTG  
 CAGAGAGGAATCCTGCTCTTGTGGGTCGGCCATTTCGATGCCTTTTGTGTGGACAAGGCTTCATTATAG  
 CTCTGCCCTTAATGAGCATATGAGACTTCATAGGGAAGATGATTTACTGGAGCAGAGCCAGATGGCTGAG  
 GAAGCTATCATTCCAGGCTTAGCCCTCACTGAGTTTCAGAGAAGTCAAGCCGAAGAGAGACTCTTTGAAT  
 GTGCAGTCTGTGGAGAATCTTTCGTCAACCCAGCAGAACTTGCAGATCACGTAACGTTCATAAAGATGA  
 GCCATATGAGTACGGGTCCTCTATACTCACACCTCATTCTTACTGAGCCCTCAAAGGAGCTATACCA  
 TTCTATGAATGCAAGGATTGTGGTAAGTCTTTTATTCATAGCACAGTCTCACTAAACATAAGGAGCTTC  
 ATCTGGAAGAAGAAGAAGATGAAGCAGCAGCAGCTGCAGCAGCAGCAGCCAGGAAGTTGAAGCCAA  
 TGTCCATGTTCCACAAGTAGTTCTGAGGATTGAGGCTTAAACGTAGAGGCTGCTGAGCCAGAAGTGGAG  
 GCTGCGGAGCCAGAAGTGGAGGCTGCTGAGCCAGAAGTGGAGGCTGCTGAGCCAAACGGAGAGGCTGAAG  
 GGCCAGATGGAGAGGCTGCAGAGCCATTGGAGAGGCTGGACAGCCAAATGGAGAGGCGGAGCAGCCAAA  
 TGGGGATGCTGATGAGCCAGATGGTGCAGGATTGAAGACCCAGAAGAAAGAGCTGAAGAGCCAGAGGGA  
 AAAGCTGAAGAGCCAGAGGGAGATGCCGACGAGCCTGACGGTGTGGGAATTGAAGACCCAGAAGAAGGTG  
 AAGATCAAGAGATTGAGGTAGAAGAACCATACTATGACTGCCATGAATGCACAGAAAACCTCACTCCAG  
 CACAGCATTGAGTGAACACCTGAAAACCTATGCCAGCATGATCATATTTGAGCCTGCAAAATGCCTTTGGG  
 GAGTGCTCAGGCTACATCGAACCTGCCAGCACCAGCAGGTGGTCCAATCAAGCTGATGAGAAGTACT  
 TCAAATGTGACGCTGTGGGAGCTCTCAATGACCGCCTGTCCCTGCCAGACACCAGAATACCCACAC  
 TGGC

ACGCGTACGCGGCCGCTCGAG - GFP Tag - GTTTAA

Protein Sequence: >RG215328 representing NM\_006210  
 Red=Cloning site Green=Tags(s)

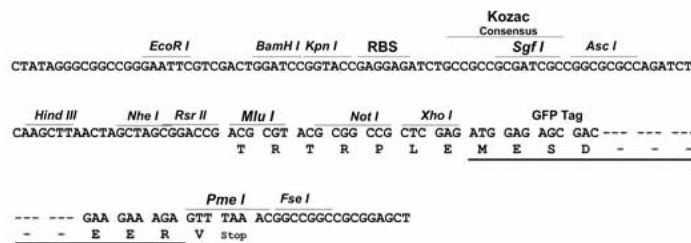
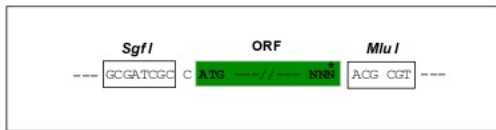
MLPPKHL SATPKKSWAPNL YELDSL TKEPDV IIGEGPTDSEFFHQFRNLIYVEFVGPRTLIKLRNL  
 CLDWLQ PETRTKEE I IELLVLEQYL T I IPEKLPWVRAKKPENCEKLVTLLENYKEMYQPEDDNNSDVTS  
 DDMTRNRRESSPPHSVHSFSDRDWDRRGRSRDMEPRDRWSHTRNPRSRMPPRDLSLPVVAKTSFEMDRE  
 DDRDSRAYESRSQDAESYQNVVDLAEDRKPHTIQDNMENYRKL LSLVQLAEDDGHSHMTQGHSSRSKRS  
 AYPSTSRGLKTMPEAKKSTHRRGICEDESSHGVI MEKFIKDVSRSSKSGRAESSDRSQRFPRMSDDNWK  
 DISLNKRESVIQQRVYEGNAFRGGFRFNSTL VSRKRVLERKRRYHFDTDGKGSIHQKGCGRKPKPFECGS  
 EMRKAMSVSSLSLSSPSFTESQPIDFGAMPYVCECGRSFSVISEFVEHQIMHTRENLYEYGESFIHSV  
 AVSEVQKSVQGGKRFECKDCGETFNKSAALAEHRKIHARGYLVECKNQECEEAFMPSPTFSELQKIYGKD  
 KFYECRVCKETFLHSSALIEHQIHFDDKDNEREHERERERERGETFRPSPALNEFQKMYGKEKMYECK  
 VCGETFLHSSSLKEHQIHTRGNPFENKGVCEETFIPGQSLKRRQKTYNKEKLCDFTDGRDAFMQSSSEL  
 SEHQIHSRKNLFEGRGYEKSVIHSGPFTESQKSHITRPLESDEDEKAF TISSNPYENQKIPTKENVYE  
 AKSYERSVIHSLASVEAQKSHSVAGPSKPKVMAESTIQSFDAINHQRVRAGGNTSEGREYSRSVIHSLVA  
 SKPPRSHNGNELVESNEKGESSYIYSDLNDRQKIPARENPCGGSKNRNYEDSVIQSVFRAKPKQSVPG  
 EGSGEFKKDGESVSPSSNVREYQKARAKKYYIEHRSNETSVIHSLPFGEQTFRPRGMLYECQECGECFAH  
 SSDLTEHQKIHDREKPSGSRNYEWSVIRSLAPTDQPQTSYAQEQYAKEQARNKCKDFRQFFATSEDLNTNQ  
 KIYDQEKSHGEESQGENTDGEETHSEETHGQETIEDPVIQGSMDPQKDDPDDKIYECEDCGLGFVDLT  
 DLTDHQKVHSRKLVDREYTHSVIHTHSISEYQRDYTGEL YECPKCGESFIHSSFLFEHQRIHEQDQL  
 YSMKGCDDGFIALLPMPRRNRAERNPALAGSAIRCLLCGGFIHSSALNEHMLRHREDDLLEQSQMAE  
 EAIIPGLALTEFQRSQTEERLFECAVCGESFVNPALADHVTVHKNEPYEYSSYTHTSFLTEPLKGAIP  
 FYECKDCGKSF IHSTVLTKHKELHLEEEEEDEAAAAAAAQEVANVHVQVVLRIQGLNVEAAEPEVE  
 AAEEPEVEAAEPEVEAAEPNGEAEGPDGEAAEPIGEAGQPNGEAEQPNGDADEPDGAGIEDPEERAEEPEG  
 KAEEPEGDADEPDGVGIEDPEEGEDQEIQVEEPPYDCHECTETFTTSSSTAFSEHLKTHASMIIFEPANAFG  
 ECSGYIERASTSTGGANQADEKYFKCDVCGQLFNDRLSLARHQNTHTG

TRTRPLE - GFP Tag - V

Restriction Sites: SgfI-MluI

Cloning Scheme:

Cloning sites used for ORF Shuttling:



ACCN: NM\_006210

ORF Size: 4764 bp

**OTI Disclaimer:** Due to the inherent nature of this plasmid, standard methods to replicate additional amounts of DNA in E. coli are highly likely to result in mutations and/or rearrangements. Therefore, OriGene does not guarantee the capability to replicate this plasmid DNA. Additional amounts of DNA can be purchased from OriGene with batch-specific, full-sequence verification at a reduced cost. Please contact our customer care team at [custsupport@origene.com](mailto:custsupport@origene.com) or by calling 301.340.3188 option 3 for pricing and delivery.

The molecular sequence of this clone aligns with the gene accession number as a point of reference only. However, individual transcript sequences of the same gene can differ through naturally occurring variations (e.g. polymorphisms), each with its own valid existence. This clone is substantially in agreement with the reference, but a complete review of all prevailing variants is recommended prior to use. [More info](#)

**OTI Annotation:** This clone was engineered to express the complete ORF with an expression tag. Expression varies depending on the nature of the gene.

**Components:** The ORF clone is ion-exchange column purified and shipped in a 2D barcoded Matrix tube containing 10ug of transfection-ready, dried plasmid DNA (reconstitute with 100 ul of water).

**Reconstitution Method:**

1. Centrifuge at 5,000xg for 5min.
2. Carefully open the tube and add 100ul of sterile water to dissolve the DNA.
3. Close the tube and incubate for 10 minutes at room temperature.
4. Briefly vortex the tube and then do a quick spin (less than 5000xg) to concentrate the liquid at the bottom.
5. Store the suspended plasmid at -20°C. The DNA is stable for at least one year from date of shipping when stored at -20°C.

**RefSeq:** [NM\\_006210.3](#)

**RefSeq Size:** 6371 bp

**RefSeq ORF:** 4767 bp

**Locus ID:** 5178

**UniProt ID:** [Q9GZU2](#)

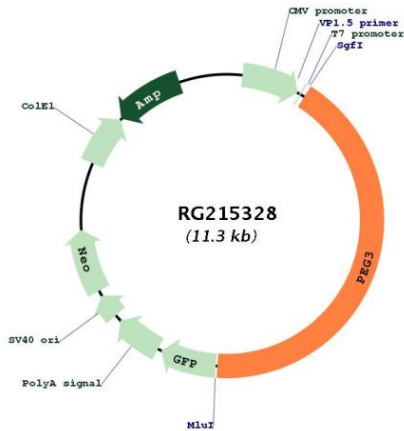
**Cytogenetics:** 19q13.43

**Protein Families:** Transcription Factors

**Gene Summary:**

In human, ZIM2 and PEG3 are treated as two distinct genes though they share multiple 5' exons and a common promoter and both genes are paternally expressed (PMID:15203203). Alternative splicing events connect their shared 5' exons either with the remaining 4 exons unique to ZIM2, or with the remaining 2 exons unique to PEG3. In contrast, in other mammals ZIM2 does not undergo imprinting and, in mouse, cow, and likely other mammals as well, the ZIM2 and PEG3 genes do not share exons. Human PEG3 protein belongs to the Kruppel C2H2-type zinc finger protein family. PEG3 may play a role in cell proliferation and p53-mediated apoptosis. PEG3 has also shown tumor suppressor activity and tumorigenesis in glioma and ovarian cells. Alternative splicing of this PEG3 gene results in multiple transcript variants encoding distinct isoforms. [provided by RefSeq, Sep 2009]

**Product images:**



Circular map for RG215328