

Product datasheet for **RG215292**

TBCEL (NM_152715) Human Tagged ORF Clone

Product data:

Product Type:	Expression Plasmids
Product Name:	TBCEL (NM_152715) Human Tagged ORF Clone
Tag:	TurboGFP
Symbol:	TBCEL
Synonyms:	EI; LRRC35
Mammalian Cell Selection:	Neomycin
Vector:	pCMV6-AC-GFP (PS100010)
E. coli Selection:	Ampicillin (100 ug/mL)
ORF Nucleotide Sequence:	>RG215292 representing NM_152715 Red=Cloning site Blue=ORF Green=Tags(s)

TTTTGTAATACGACTCACTATAGGGCGGCCGGAATTCGTCGACTGGATCCGGTACCGAGGAGATCTGCC
GCC**CGATCGCC**

ATGGATCAACCTAGTGAAGAAGTTTCATGCAAGTATTATGTGAAAAATATAGTCCTGAAAATTTTCCTT
ATCGCCGTGGCCCGGGATGGGAGTCCATGTCCCAGCCACACCTCAGGGCTCTCCTATGAAAGATCGCT
CAACCTCCAAGTGTACTAGTGTGAACAGCTGTGGAATAACCTGTGCAGGAGATGAAAAAGAAATTGCT
GCTTTCTGCGCTCATGTGTCGGAAGTACTGTTCTGACAACAACTCGAAGACTGGCATGAGGTCAGTA
AAATTGTGTCAAATGTTCTCAGTTGGAGTTTCTAAACCTGAGTCCAACCTCTGAATTTGTCGGTTTT
AGAAAGAACATGTGCTGGTCTTCTCTGGGGTTCGCAAACCTGTCTCAACAACAGCAAAGCTTCTTGG
GAGACGGTCCACATGATACTACAGGAGTTACCAGATTTGGAGGAGCTCTTCTGTGCCTTAATGACTATG
AAACAGTGTCTTGTCTTCTATTTGCTGTCTTCTTAAAGCTACTACATATAACAGACAATAACCTCCA
AGACTGGACTGAAATACGAAAGTTAGGAGTTATGTTTTCTTCACTGGATACCCCTCGTCTGGCCAACAAT
CATTTGAATGCTATTGAGGAGCCTGATGATTATTGGCCAGGTTGTTTCTAATCTTCGATCCATCAGCC
TCCACAAGTCAGGTTTGCAGTCTGGGAAGACATTGATAAACTAAATTCATTTCCCAAAGTGAAGAAGT
GAGATTGTAGGAATTCCTCTTCTGACCCATATACCACCGAGGAGCGAAGGAAATGGTAAATAGCCAGA
TTGCCATCAGTTTCCAACTTAATGGCAGCGTTGTTACTGATGGTGAACGAGAAGATTCTGAGAGATTTT
TTATTCGTTACTATGTGGATGTTCCACAGGAAGAAGTGCCATTCAGGTATCATGAACTGATCACTAAATA
TGGGAAGTTGGAGCCTTTGGCAGAAGTGGACCTAAGACCCAGAGCAGTGCAAAAGTAGAAGTCCACTTT
AACGATCAGGTGGAAGAAATGAGCATTCTGCTGGACCAACAGTGGCAGAACTAAAGAAACAGTTAAAAA
CTCTAGTACAATTACCCACAAGCAACATGCTTCTCTACTATTTTGACCATGAAGCACCTTTGGCCAGA
GGAAATGAAGTACAGCTCTCGGCATTGCATTCTTTGGCATTAGGGATGGAGATAAAATTTACGTGGAA
TCCAAAACAAA

ACGCGTACGCGGCCGCTCGAG - GFP Tag - GTTTAA



[View online »](#)

Protein Sequence: >RG215292 representing NM_152715
Red=Cloning site Green=Tags(s)

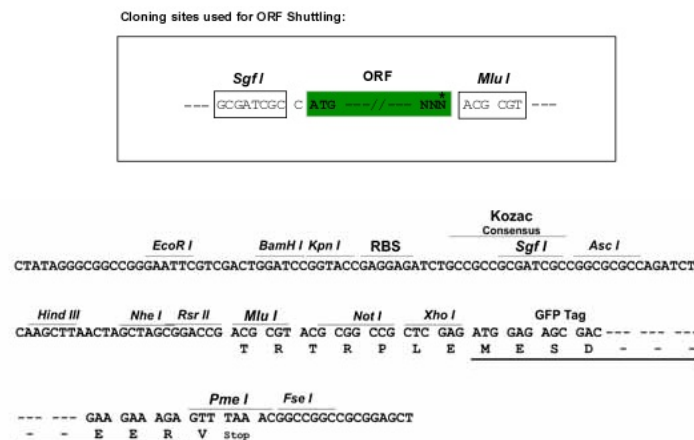
MDQPSSGRSFMQVLCEKYSPENFPYRRGPGMGVHVPATPQGSPMKDRLNLPVSVLNLNSCGITCAGDEKEIA
 AFCAHVSELDLSDNKLEDWHEVSKIVSNVPQLEFLNLSNPLNLSVLERTCAGSFSGVRKLVNNSKASW
 ETVHMILQELPDLEELFLCLNDYETVSCPSICCHSLKLLHITDNNLQDWTEIRKLGVMFPSLDTLVLANN
 HLNAIIEEPDDSLARLFPNLRISLHKSGLQSWEDIDKLSNFPKLEEVRLGLIPLLPYTTEERRKLVIA
 LPSVSKLNGSVVTDGEREDSERFFIRYYVDVPQEEVPPFRYHELITKYGKLEPLAEVDLRPQSSAKVEVHF
 NDQVEEMSIRLDQTVAELEKQKTLVQLPTSNMLLYYFDHEAPFGPEEMKYSSRALHSFGIRDGDKIYVE
 SKTK

TRTRPLE – GFP Tag – V

Restriction Sites:

SgfI-MluI

Cloning Scheme:



ACCN: NM_152715

ORF Size: 1272 bp

OTI Disclaimer: The molecular sequence of this clone aligns with the gene accession number as a point of reference only. However, individual transcript sequences of the same gene can differ through naturally occurring variations (e.g. polymorphisms), each with its own valid existence. This clone is substantially in agreement with the reference, but a complete review of all prevailing variants is recommended prior to use. [More info](#)

OTI Annotation: This clone was engineered to express the complete ORF with an expression tag. Expression varies depending on the nature of the gene.

Components: The ORF clone is ion-exchange column purified and shipped in a 2D barcoded Matrix tube containing 10ug of transfection-ready, dried plasmid DNA (reconstitute with 100 ul of water).

Reconstitution Method:

1. Centrifuge at 5,000xg for 5min.
2. Carefully open the tube and add 100ul of sterile water to dissolve the DNA.
3. Close the tube and incubate for 10 minutes at room temperature.
4. Briefly vortex the tube and then do a quick spin (less than 5000xg) to concentrate the liquid at the bottom.
5. Store the suspended plasmid at -20°C. The DNA is stable for at least one year from date of shipping when stored at -20°C.

RefSeq: [NM_152715.5](#)

RefSeq Size: 1781 bp

RefSeq ORF: 1275 bp

Locus ID: 219899

UniProt ID: [Q5QJ74](#)

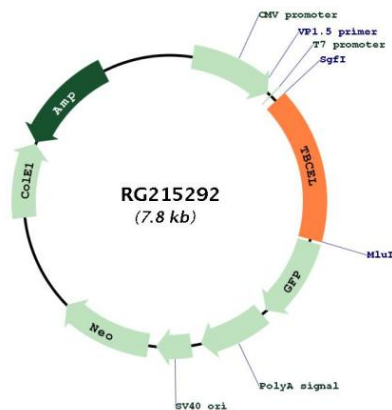
Cytogenetics: 11q23.3

Domains: LRR

Protein Families: Druggable Genome

Gene Summary: Acts as a regulator of tubulin stability.[UniProtKB/Swiss-Prot Function]

Product images:



Circular map for RG215292