

## Product datasheet for **RG215270**

### ATP13A2 (NM\_022089) Human Tagged ORF Clone

#### Product data:

Product Type:	Expression Plasmids
Product Name:	ATP13A2 (NM_022089) Human Tagged ORF Clone
Tag:	TurboGFP
Symbol:	ATP13A2
Synonyms:	CLN12; HSA9947; KRPPD; PARK9; SPG78
Mammalian Cell Selection:	Neomycin
Vector:	pCMV6-AC-GFP (PS100010)
E. coli Selection:	Ampicillin (100 ug/mL)
ORF Nucleotide Sequence:	>RG215270 representing NM_022089 Red=Cloning site Blue=ORF Green=Tags(s)

TTTTGTAATACGACTCACTATAGGGCGGCCGGAATTCGTCGACTGGATCCGGTACCGAGGAGATCTGCCGCC**CGATCGCC**

ATGAGCGCAGACAGCAGCCCTCTCGTGGGCAGCACGCCACCGTTATGGGACCCTGACGATAGGGACATCAATAGATCCCCTCAGCTCCTCAGTTTCATCCGTGAGGCTCAGCGGCTACTGTGGCAGTCCATGGAGGGTCATCGGCTATCACGTCGTGGTCTGGATGATGGCTGGGATCCCTTTGCTGCTTCCGTTGGAAGCCCTGTGGGGGTGCGGCTCGGCTCCGCCCTGCAACCTGGCCACGCCGAAACTCGTTATCGAAATAAGAGACAAAGAGGATAGTTCTGGCAGCTCTTACTGTCCAGGTGCAGACTGAGGCCATCGGCGAGGGCAGCCTGGAGCCGTCCCCACAGTCCCAGGCAGAGGATGGCCGGAGCCAGGCGGCAGTTGGGGCGGTACCAGAGGGTGCCTGGAAGGATACGGCCAGCTCCACAAGAGCGAGGAGGCGGTGAGTGTGCGACAGAAGCGGGTGTGCGGTATTACCTCTTCCAGGGCCAGCGCTATATCTGGATCGAGACCCAGCAAGCCTTCTACCAGGTCAGCCTCCTGGACCATGGCCGCTCTTGTGACGACGTCCACCGCTCCCGCCATGGCCTCAGCCTCCAGGACCAAATGTGAGGAAGGCCATTTACGGCCCCAACGTGATCAGCATACCGGTCAAGTCTACCCCCAGCTGCTGGTGGACGAGGCACTGAACCCCTACTATGGGTTCCAGGCTTCCAGCATCGCGCTGGCTGGCTGACCACTACTACTGGTACGCCCTGTGCATCTTCTCATTTCCTCCATCTCCATCGCTGTGCGTGTACAAGACCAGAAAGCAAAGCCAGACTCTAAGGGACATGGTCAAGTTGTCCATGCGGGTGTGCGTGTGCCGCCAGGGGGAGAGGAAGAGTGGGTGGACTCCAGTGAAGTGTGCCCCGAGACTGCCTGGTGTGCCCCAGGAGGGTGGGCTGATGCCCTGTGATGCCGCCCTGGTGGCCGGCAGTGCATGGTGAATGAGAGCTCTCTGACAGGAGAGAGCATTCCAGTGTGAAGACGGCACTGCCGGAGGGGCTGGGGCCCTACTGTGACAGACACACCCGGCCGACACACACTTCTGCGGGACCCTCATCTTGCAGGCCCGGGCTATGTGGGACCGCACGTCCTGGCAGTGGTACCCGCACAGGGTTCTGCACGGCAAAAGGGGCTGGTGAAGTCCATCTTGCACCCCGGCCATCAACTCAAGTTCTATAAACACAGCATGAAGTTTGTGGTGCCTCTCTGTCCTGGCTCTCCTCGCACCATCTACAGCATCTTCATCTCTACCGAAACCGGTGCCTCTGAATGAGATTGTAATCCGGGCTCTCGACCTGGTACCGTGGTGGTCCACCTGCCCTGCCTGCTGCCATGACTGTGTGCACGCTCTACGCCAGAGCCGACTGCGGAGA



[View online »](#)

CAGGGCATTCTGCATCCACCCACTGCCATCAACCTGGGGGGCAAGCTGCAGCTGGTGTGTTTCGACA  
AGACGGGCACCCTCACTGAGGACGGCTTAGACGTGATGGGGTGGTGCCCTGAAGGGCAGGCATTCT  
GCCCTGGTCCCAGAGCCTCGCCGCTGCCTGTGGGGCCCTGCTCCGAGCACTGGCCACCTGCCATGCC  
CTCAGCCGGCTCCAGGACACCCCGTGGGGACCCCATGGACTTGAAGATGGTGGAGTCTACTGGCTGG  
TCCTGGAGGAAGAGCCGGCTGCAGACTCAGCATTTGGGACCCAGGTCTTGGCAGTGATGAGACCCCACT  
TTGGGAGCCCCAGCTGCAGGCAATGGAGGAGCCCCGGTGCCAGTCAGCGTCTCCACCCTTCCCCTTC  
TCTTCGGCTCTGCAGCGCATGAGTGTGGTGGTGGCGTGCCAGGGGCCACTCAGCCGAGGCCTACGTCA  
AAGGCTCCCCGGAGCTGGTGGCAGGGCTCTGCAACCCGAGACAGTGCCACCCGACTTCGCCAGATGCT  
GCAGAGCTATACAGCTGCTGGCTACCGTGTCTGGCCCTGGCCAGCAAGCCACTGCCACTGTGCCAGC  
CTGGAGGCAGCCAGCAACTGACGAGGGACTGTGGAAGGAGACCTGAGCCTCTGGGGCTGTGGTCA  
TGAGGAACCTACTGAAGCCGAGACAACGCCAGTTATCCAGGCTCTGCAAGGACCCGCATCCGCGCGT  
CATGGTACAGGGGACAACCTGCAGACAGCGGTGACTGTGGCCCGGGCTGTGGCATGGTGGCCCCCAG  
GAGCATCTGATCATCGTCCAGCCACCCACCTGAGCGGGTCAAGCTGCCTCTCTCGATTCTGCCGA  
TGGAGTCCCCACAGCCGTAATGGCGTAAAGGATCTGACCAGGCTGCAAGCTACACCGTGGAGCCAGA  
CCCCGATCCAGGCACCTGGCCCTCAGCGGGCCACCTTTGGTATCATTGTGAAGCACTTCCCCAAGCTG  
CTGCCAAGGTCCTGGTCCAGGGCACTGCTTTGCCCGATGGCCCTGAGCAGAAGACAGAGCTGGTGT  
GCGAGCTACAGAAGCTTCACTGCGTGGCATGTGCGGAGACGGGCCAATGACTGTGGGGCCCTGAA  
GGCGGCTGATGTCGGCATCTCGCTGTCCAGGCAGAAAGCCTCAGTGGTCTCACCTTACCTCGAGCATG  
GCCAGTATTGAGTGCCTGCCATGGTCAACAGGGAGGGCGCTGTTCCCTTGACACTTCCGTTACGCTCT  
TCAAGTACATGGCTCTGTACAGCCTGACCCAGTTCATCTCCGCTCTGATCCTCTACACGATCAACACCA  
CCTGGGTGACCTGCAGTTCCTGGCCATCGACCTGGTCAACACCACAGTGGCAGTGCTCATGAGCCGC  
ACGGGGCCAGCGCTGGTCTGGACGGGTGCGGCCACCGGGGGCGCTGCTCAGCGTGCCCGTGTGAGCA  
GCCTGCTGCTGCAGATGGTCTGGTACCAGCGTGCAGCTAGGGGGCTACTTCTGACCCCTGGCCAGCC  
ATGTTTCTGCTGCTGAAACAGGACAGTGGCCGACCCAGACAACCTGCCAACTACGAGAACACCGTGGTC  
TTCTCTGTCCAGCTTCCAGTACCTCATCTGGCTGCAGCCGTGCAAGGGGGCGCCCTTCCGCGGC  
CGCTCTACACCAATGTGCCCTTCTGGTGGCCCTGGCGCTCCTGAGCTCCGTCTGGTGGGCTTGTCT  
GGTCCCCGGCCTCCTGCAGGGCCGCTGGCGCTGAGGAACATCACTGACACCGGCTTCAAGCTGCTGCTG  
CTGGGTCTGGTCAACCTCAACTTCTGGGGCCTTCACTGCTGGAGAGCGTGTAGACCAGTGCCTCCCCG  
CCTGCCTGCGCCGCTCCGGCCAAAGCGGGCTCAAGAAGCGCTTCAAGCAGCTGGAACGAGAGCTGGC  
CGAGCAGCCCTGGCCGCGCTGCCGCGCCCTGAGG

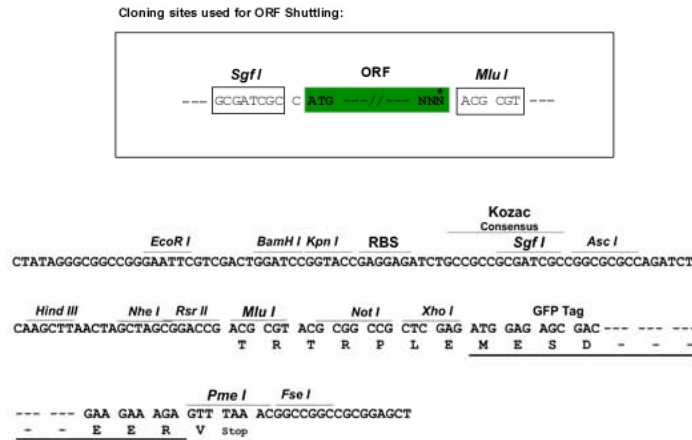
ACGCGTACGCGGCCGCTCGAG - GFP Tag - GTTTAA

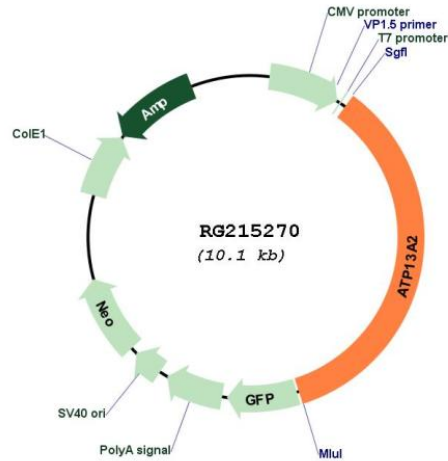
**Protein Sequence:** >RG215270 representing NM\_022089  
 Red=Cloning site Green=Tags(s)

```
MSADSSPLVGSTPTGYGTLTIGTIDPLSSSVSSVRLSGYCGSPWRVIGYHVVVMMAGIPLLLFRWKPL
WGVRLRLRPCNLAHAETLVIEIRDKEDSSWQLFTVQVQTEAIGEGSLEPSQSQAEDGRSQAAVGAVPEG
AWKDTAQLHKSEEAVSVGQKRVLRYYLFQGRYIWIETQQAFYQVSLLDHGRSCDDVHRSRHLGLSLQDQM
VRKAIYGNVISIPVKSYPQLLVDEALNPYYGFQAFSIALWLADHYHWYALCIFLISSISICLSLYKTRK
QSQTLRDMVKLSMRVCVCRPGGEEWVDSSELVPGDCLVLPQEGGLMPCDAALVAGECMVNESSLTGESI
PVLKTALPEGLGPYCAETHRRHTLFCGTLILQARAYVGPVLA VVTRTGFCCTAKGGLVSSILHPRPINFK
FYKHSKMFVAALSVLALLGTIYSIFILYRNRVPLNEIVIRALDLVTVVVPPALPAAMTVCTLYAQSRLRR
QGIFCIHPLRINLGGKLQVCFDKTGTLTEDGLDVMGVVPLKQQAFLPLVPEPRRLPVGPLLRLALATCHA
LSRLQDTPVGDPMCLKMVESTGWVLEEPAADSAFGTQVLAVMRPPLWEPQLQAMEEPPVPSVLRHFPF
SSALQRMSVVVAWPGATQPEAYVKGSPELVAGLCNPETVPTDF AQMLQSYTAAGYRVVALASKPLPTVPS
LEAAQQLTRDTVEGDL SLLGLLVMRNLKPKQTPVIQALRRTRIRAVMVTGDNLQTAVTVARGCGMVAPQ
EHLIIIVHATHPERGQPASLEFLPMESPTAVNGVKDPDQAASYTVEPDRSRHLALSGPTFGIIVKHFPKL
LPKVLVQGTVFARMAPEQKTELVCLEQLQYCVGMC GDGANDCGALKAADVGISLSQAEASVSPFTSSM
ASIECVPMVIREGRCLDTSFSVFKYMALYSLTQFISVLI LYTINTNLGDLQFLAIDLVTITTVAVLMSR
TGPALVLRVPRPGALLSVPVLSLLLQMLVLTGVQLGGYFLTLAQPWFVPLNRTVAAPDNLPNYENTVV
FSLSSFQYLILAAAVSKGAPFRRPL YTNVPFLVALALLSSVLVGLVLPGLLQGPLALRNITDTGFKLLL
LGLVTLNFVGFMLESVLDQCLPACLRRLRPKRASKKRFKQLERELAEQPWPPLPAGPLR
```

TRTRPLE - GFP Tag - V

**Restriction Sites:** SgfI-MluI  
**Cloning Scheme:**



**Plasmid Map:**


**ACCN:** NM\_022089

**ORF Size:** 3540 bp

**OTI Disclaimer:** The molecular sequence of this clone aligns with the gene accession number as a point of reference only. However, individual transcript sequences of the same gene can differ through naturally occurring variations (e.g. polymorphisms), each with its own valid existence. This clone is substantially in agreement with the reference, but a complete review of all prevailing variants is recommended prior to use. [More info](#)

**OTI Annotation:** This clone was engineered to express the complete ORF with an expression tag. Expression varies depending on the nature of the gene.

**Components:** The ORF clone is ion-exchange column purified and shipped in a 2D barcoded Matrix tube containing 10ug of transfection-ready, dried plasmid DNA (reconstitute with 100 ul of water).

**Reconstitution Method:**

1. Centrifuge at 5,000xg for 5min.
2. Carefully open the tube and add 100ul of sterile water to dissolve the DNA.
3. Close the tube and incubate for 10 minutes at room temperature.
4. Briefly vortex the tube and then do a quick spin (less than 5000xg) to concentrate the liquid at the bottom.
5. Store the suspended plasmid at -20°C. The DNA is stable for at least one year from date of shipping when stored at -20°C.

**RefSeq:** [NM\\_022089.4](#)

**RefSeq Size:** 3840 bp

**RefSeq ORF:** 3543 bp

**Locus ID:** 23400

**UniProt ID:** [Q9NQ11](#)

**Cytogenetics:** 1p36.13

**Domains:** E1-E2\_ATPase, Hydrolase

**Protein Families:** Transmembrane

**Gene Summary:** This gene encodes a member of the P5 subfamily of ATPases which transports inorganic cations as well as other substrates. Mutations in this gene are associated with Kufor-Rakeb syndrome (KRS), also referred to as Parkinson disease 9. Multiple transcript variants encoding different isoforms have been found for this gene.[provided by RefSeq, Nov 2008]