

Product datasheet for **RG215258**

SAP97 (DLG1) (NM_004087) Human Tagged ORF Clone

Product data:

Product Type:	Expression Plasmids
Product Name:	SAP97 (DLG1) (NM_004087) Human Tagged ORF Clone
Tag:	TurboGFP
Symbol:	SAP97
Synonyms:	DLGH1; hdlg; SAP-97; SAP97
Mammalian Cell Selection:	Neomycin
Vector:	pCMV6-AC-GFP (PS100010)
E. coli Selection:	Ampicillin (100 ug/mL)



[View online »](#)

ORF Nucleotide Sequence:

>RG215258 representing NM_004087
 Red=Cloning site Blue=ORF Green=Tags(s)

TTTTGTAATACGACTCACTATAGGGCGGCCGGAATTCGTCGACTGGATCCGGTACCGAGGAGATCTGCC
 GCC**CGGATCGCC**

ATGCCGGTCCGGAAGCAAGATACCCAGAGAGCATTGCACCTTTTGGAGGAATATCGTTCAAACCTAAGCC
 AAAGTGAAGACAGACAGCTCAGAAGTCCATAGAACGGGTATTAAACATATTTCCAGAGCAACCTCTTTCA
 GGCTTTAATAGATATTCAGAATTTTATGAAGTGACCTTACTGGATAATCCAAAATGTATAGATCGTTCA
 AAGCCGTCTGAACCAATCAACCTGTGAATACTTGGGAGATTTCCAGCCTTCCAAGCTCTACTGTGACTT
 CAGAGACTGCCAAGCAGCCTTAGCCCTAGTGTAGAGAAATACAGGTATCAGGATGAAGATACACCTCC
 TCAAGAGCATATTTCCCAAAAATCACAATGAAGTGATAGGTCCAGAATTGGTTCATGTCTCAGAGAAG
 AACTTATCAGAGATTGAGAATGTCCATGGATTTGTTTCTATTCTCATATTTACCAATAAAGGCAAATC
 CTCCTCCAGTACTGGTCAACACAGATAGCTTGGAAACACCAACTACGTTAATGGCACAGATGCAGATTA
 TGAATATGAAGAAATCACACTTGAAGGGGAAATTCAGGGCTTGGTTTCAGCATTGCAGGAGGTACGGAC
 AACCCACACATTGGAGATGACTCAAGTATTTTCATTACCAAAAATTATCACAGGGGAGCAGCCGCCAAAG
 ATGGAAGATTGCGGGTCAATGACTGTATATTACGAGTAAATGAAGTAGATGTTCTGTGATGTAAACATAG
 CAAAGCAGTTGAAGCGTTGAAAGAAGCAGGGTCTATTGTACGCTTGTATGTAAGAAAGAAAGAAACAGTG
 TCAGAAAAAATAATGAAATAAAGCTCATTAAAGTCTTAAAGTCTTAAAGTCTTGGGTTTAGCATTGCTGGAGGTG
 TTGAAATCAGCATATTCCTGGGGATAATAGCATCTATGTAACCAAAAATAATTGAAGGAGGTGCAGCACA
 TAAGGATGGCAAACCTCAGATTGGAGATAAACTTTTAGCAGTGAATAACGTATGTTTAGAAGAAGTTACT
 CATGAAGAAGCAGTAACGCCTTAAAGAACACATCTGATTTTGTATTGTAAGTGGCAAAACCCACAA
 GTATGTATGAATGATGGCTATGCACCACCTGATATCACCAACTCTTCTCAGCCTTTGATAACCA
 TGTTAGCCCATCTTCTTCTGGGCCAGACACCCAGCATCTCCAGCCAGATACTCCCAAGTTTCTAAAGCA
 GTACTTGGAGATGATGAAATTACAAGGGAACCTAGAAAAGTTGTTCTTCATCGTGGCTCAACGGGCTTG
 GTTTCAACATTGTAGGAGGAGAAGATGGAGAAGGAATATTTATTTCTTTATCTTAGCCGGAGGACCTGC
 TGATCTAAGTGGAGAGCTCAGAAAAGGAGATCGTATTATATCGGTAAACAGTGTGACCTCAGAGCTGCT
 AGTCATGAGCAGGCAGCAGCTGCATTGAAAAATGCTGGCCAGGCTGTACAATTGTTGCACAATATCGAC
 CTGAAGAATACAGTCGTTTTGAAGCTAAAATACATGATTTACGGGAGCAGATGATGAATAGTAGTATTAG
 TTCAGGGTCAGGTTCTCTCGAACTAGCCAGAAGCGATCCCTCTATGTCAGAGCCCTTTTGGATTATGAC
 AAGACTAAAGACAGTGGGCTTCCAGTCAGGGACTGAACCTCAAATTTGGAGATATCCTCCATGTTATTA
 ATGCTTCTGATGATGAATGGTGGCAAGCCAGGCAGGTTACACCAGATGGTGAAGCGATGAGGTCGGAGT
 GATTTCCAGTAAACGCAGAGTTGAGAAGAAAGAACGAGCCCGATTAACCAAGTGAATTCATTTCTAAA
 ACGAGAGATAAAGGGTCAATGACAAGCGTAAAAAGAACCTTTTTCCCGAAAATTTCCCTTCTACA
 AGAACAAGGACCAGAGTGAAGCAGGAAACAAGTGTGCTGACCAGCATGTAACCTTAATGCCAGCGATAG
 TGAAAGTAGTTACCGTGGTCAAGAAGAATACGTCTTATCTTATGAACCAGTGAATCAACAAGAAGTTAAT
 TATACTCGACCAGTATCATATTTGGACCTATGAAAGACAGGATAAATGATGACTTGATCTCAGAATTTCT
 CTGACAAAATTTGGATCCTGTGTTCTCATACAACCTAGACCAAAACGAGATTATGAGGTAGATGGAAGAGA
 TTATCATTTTGTGACTTCAAGAGAGCAGATGGAAGAAAGATATCCAGGAACATAAATTCATTGAAGTGGC
 CAGTATAACAATCATCTATATGGAACAAGTGTTCAGTCTGTACGAGAAGTGCAGAAAAAGGGCAAACT
 GTATCCTTGATGTGCTGAAATGCCATAAAGAGATTACAGATTGCACAGCTTTACCCTATCTCCATTTT
 TATTAACCCAAAATCCATGGAAAATATCATGGAATGAATAAGCGTCTAACAGAAGAACAAGCCAGAAAA
 ACATTTGAGAGAGCCATGAAACTGGAACAGGAGTTTACTGAACATTTACAGCTATTGTACAGGGGGATA
 CGCTGGAAGACATTTACAACCAAGTGAACAGATCATAGAAGAACAATCTGGTCTTACATCTGGTTCC
 GGCAAAAGAAAAGCTA

ACGCGTACGCGGCCGCTCGAG – GFP Tag – **GTTTAA**

Protein Sequence: >RG215258 representing NM_004087
 Red=Cloning site Green=Tags(s)

MPVRKQDTQRALHLL E E Y R S K L S Q T E D R Q L R S S I E R V I N I F Q S N L F Q A L I D I Q E F Y E V T L L D N P K C I D R S
 K P S E I Q P V N T W E I S S L P S S T V T S E T L P S S L S P S V E K Y R Y Q D E T P P Q E H I S P Q I T N E V I G P E L V H V S E K
 N L S E I E N V H G F V S H S H I S P I K A N P P P V L V N T D S L E T P T Y V N G T D A D Y E Y E E I T L E R G N S G L G F S I A G G T D
 N P H I G D D S S I F I T K I I T G G A A A Q D G R L R V N D C I L R V N E V D R V D V T H S K A V E A L K E A G S I V R L Y V K R R K P V
 S E K I M E I K L I K G P K L G F S I A G G V G N Q H I P G D N S I Y V T K I I E G G A A H K D G K L Q I G D K L L A V N N V C L E E V T
 H E E A V T A L K N T S D F V Y L K V A K P T S M Y M N D G Y A P P D I T N S S S Q P V D N H V S P S S F L G Q T P A S P A R Y S P V S K A
 V L G D D E I T R E P R K V V L H R G S T G L G F N I V G G E D G E G I F I S F I L A G G P A D L S G E L R K G D R I I S V N S V D L R A A
 S H E Q A A A A L K N A G Q A V T I V A Q Y R P E E Y S R F E A K I H D L R E Q M M N S S I S S G S G L R T S Q K R S L Y V R A L F D Y D
 K T K D S G L P S Q G L N F K F G D I L H V I N A S D D E W W Q A R Q V T P D G E S D E V G V I P S K R R V E K K E R A R L K T V K F N S K
 T R D K G S F N D K R K K N L F S R K F P F Y K N K D Q S E Q E T S D A D Q H V T S N A S D S E S S Y R G Q E E Y V L S Y E P V N Q Q E V N
 Y T R P V I I L G P M K D R I N D D L I S E F P D K F G S C V P H T T R P K R D Y E V D G R D Y H F V T S R E Q M E K D I Q E H K F I E A G
 Q Y N N H L Y G T S V Q S V R E V A E K G K H C I L D V S G N A I K R L Q I A Q L Y P I S I F I K P K S M E N I M E M N K R L T E E Q A R K
 T F E R A M K L E Q E F T E H F T A I V Q G D T L E D I Y N Q V K Q I I E E Q S G S Y I W P A K E K L

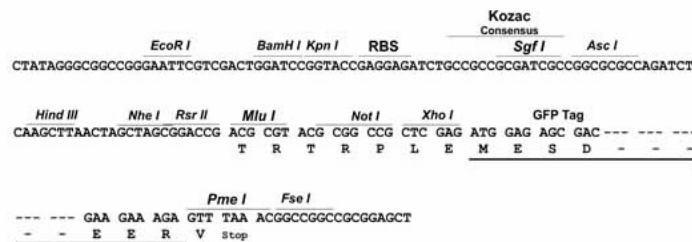
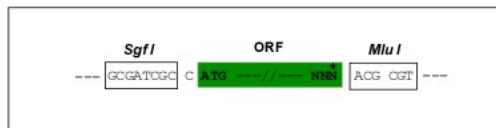
TRTRPLE - GFP Tag - V

Restriction Sites:

SgfI-MluI

Cloning Scheme:

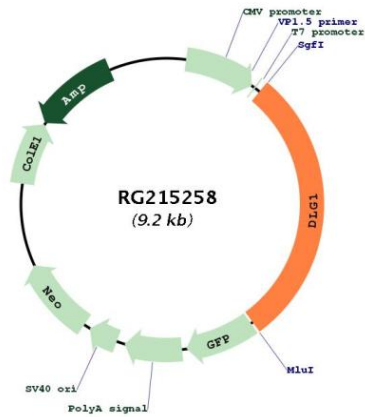
Cloning sites used for ORF Shuttling:



ACCN:	NM_004087
ORF Size:	2778 bp
OTI Disclaimer:	<p>Due to the inherent nature of this plasmid, standard methods to replicate additional amounts of DNA in E. coli are highly likely to result in mutations and/or rearrangements. Therefore, OriGene does not guarantee the capability to replicate this plasmid DNA. Additional amounts of DNA can be purchased from OriGene with batch-specific, full-sequence verification at a reduced cost. Please contact our customer care team at custsupport@origene.com or by calling 301.340.3188 option 3 for pricing and delivery.</p> <p>The molecular sequence of this clone aligns with the gene accession number as a point of reference only. However, individual transcript sequences of the same gene can differ through naturally occurring variations (e.g. polymorphisms), each with its own valid existence. This clone is substantially in agreement with the reference, but a complete review of all prevailing variants is recommended prior to use. More info</p>
OTI Annotation:	This clone was engineered to express the complete ORF with an expression tag. Expression varies depending on the nature of the gene.
Components:	The ORF clone is ion-exchange column purified and shipped in a 2D barcoded Matrix tube containing 10ug of transfection-ready, dried plasmid DNA (reconstitute with 100 ul of water).
Reconstitution Method:	<ol style="list-style-type: none"> 1. Centrifuge at 5,000xg for 5min. 2. Carefully open the tube and add 100ul of sterile water to dissolve the DNA. 3. Close the tube and incubate for 10 minutes at room temperature. 4. Briefly vortex the tube and then do a quick spin (less than 5000xg) to concentrate the liquid at the bottom. 5. Store the suspended plasmid at -20°C. The DNA is stable for at least one year from date of shipping when stored at -20°C.
RefSeq:	NM_004087.1 , NP_004078.1
RefSeq Size:	3046 bp
RefSeq ORF:	2781 bp
Locus ID:	1739
UniProt ID:	Q12959
Cytogenetics:	3q29
Domains:	SH3, PDZ, L27, Guanylate_kin, GuKc
Protein Families:	Druggable Genome
Protein Pathways:	T cell receptor signaling pathway

Gene Summary:

This gene encodes a multi-domain scaffolding protein that is required for normal development. This protein may have a role in septate junction formation, signal transduction, cell proliferation, synaptogenesis and lymphocyte activation. A multitude of transcript variants deriving from alternative splicing and the use of multiple alternate promoter have been observed, including some splice variants that may be specific to brain and other tissues. An upstream uORF may regulate translation at some splice variants of this gene. [provided by RefSeq, Sep 2018]

Product images:

Circular map for RG215258