

Product datasheet for **RG215251**

Tenascin C (TNC) (NM_002160) Human Tagged ORF Clone

Product data:

Product Type:	Expression Plasmids
Product Name:	Tenascin C (TNC) (NM_002160) Human Tagged ORF Clone
Tag:	TurboGFP
Symbol:	Tenascin C
Synonyms:	150-225; DFNA56; GMEM; GP; HXB; JI; TN; TN-C
Mammalian Cell Selection:	Neomycin
Vector:	pCMV6-AC-GFP (PS100010)
E. coli Selection:	Ampicillin (100 ug/mL)
ORF Nucleotide Sequence:	>RG215251 representing NM_002160 Red=Cloning site Blue=ORF Green=Tags(s)

TTTTGTAATACGACTCACTATAGGGCGGCCGGAATTCGTCGACTGGATCCGGTACCGAGGAGATCTGCC
GCC**CGATCGCC**

ATGGGGGCCATGACTCAGCTGTTGGCAGGTGTCTTTCTTGCTTTCCTTGCCTCGCTACCGAAGGTGGG
TCCTCAAGAAAGTCATCCGGCACAAGCGACAGAGTGGGGTGAACGCCACCCTGCCAGAAGAGAACCAGCC
AGTGGTGTAAACACGTTTACAACATCAAGCTGCCAGTGGGATCCCAGTGTTCGGTGGATCTGGAGTCA
GCCAGTGGGGAGAAAGACTGGCACCGCTTCAGAGCCCAGCGAAAGCTTTCAGGAGCACACAGTAGATG
GGGAAAACCAGATTGTCTTCACACATCGCATCAACATCCCCCGCCGGCCTGTGGCTGTGCCGAGCCCC
TGATGTTAAGGAGCTGCTGAGCAGACTGGAGGAGCTGGAGAACCCTGGTGTCTTCCCTGAGGGAGCAATGT
ACTGCAGGAGCAGGCTGCTGTCTCCAGCCTGCCACAGGCCGCTTGGACACCAGGCCCTTCTGTAGCGGTC
GGGGCAACTTCAGCACTGAAGGATGTGGCTGTGTCTGCGAACCTGGTGGAAAGGCCCAACTGCTCTGA
GCCCCAATGTCCAGGCAACTGTCACCTTCGAGGCCGGTGCATTGATGGGCAGTGCATCTGTGACGACGGC
TTCACGGGCGAGGACTGCAGCCAGCTGGCTTCCCCAGCGACTGCAATGACCAGGGCAAGTGCCTGAATG
GAGTCTGCATCTGTTTCGAAGGCTACGCCGGGGCTGACTGCAGCCGTGAAATCTGCCAGTGCCTGCGAG
TGAGGAGCACGGCACATGTGTAGATGGCTTGTGTGTGCCACGATGGCTTTCAGGCGATGACTGCAAC
AAGCCTCTGTGTCTCAACAATTGCTACAACCGTGGACGATGCGTGGAGAATGAGTGGCTGTGTGATGAGG
GTTTCACGGGCGAAGACTGCAGTGAGCTCATCTGCCCAATGACTGCTTCGACCGGGCCGCTGCATCAA
TGGCACCTGCTACTGCGAAGAAGGCTTACAGGTGAAGACTGCGGGAAACCCACCTGCCACATGCCTGC
CACACCCAGGGCCGGTGTGAGGAGGGCAGTGTGTATGTGATGAGGGCTTTCGCCGTTTGGACTGCAGCG
AGAAGAGGTGCTCTGCTGACTGTCACAATCGTGGCCGCTGTGTAGACGGGCGGTGTGAGTGTGATGATGG
TTTCACTGGAGCTGACTGTGGGAGCTCAAGTGTCCCAATGGCTGCAGTGGCCATGGCCGCTGTGTCAAT
GGGCAGTGTGTGTGATGAGGGCTATACTGGGAGGACTGCAGCCAGCTACGGTCCCCAATGACTGTC
ACAGTCGGGGCCGCTGTGTGAGGGCAAATGTGTATGTGAGCAAGGCTTCAAGGGCTATGACTGCAGTGA
CATGAGCTGCCCTAATGACTGTACCAGCACGGCCGCTGTGTGAATGGCATGTGTGTTTGTGATGACGGC



[View online »](#)

TACACAGGGGAAGACTGCCGGGATCGCCAATGCCCCAGGGACTGCAGCAACAGGGGCCTCTGTGTGGACG
 GACAGTGCCTGTGTGAGGACGGCTTACCGGCCCTGACTGTGCAGAACTCTCTGTCCAAATGACTGCCA
 TGGCCAGGGTCGCTGTGTGAATGGGCAGTGCCTGTGCCATGAAGGATTTATGGGCAAAGACTGCAAGGAG
 CAAAGATGTCCCAGTACTGTATGCCCAGGGCCGCTGCGTGGACGGCCAGTGCATCTGCCACGAGGGCT
 TCACAGGCCTGGACTGTGGCCAGCACTCTGCCCACTGACTGCAACAACCTAGGACAATGCGTCTCGGG
 CCGCTGCATCTGCAACGAGGGCTACAGCGGAGAAGACTGCTCAGAGGTGTCTCTCCCAAAGACCTCGTT
 GTGACGAAGTACGCGAAGAGACGGTCAACCTGGCCTGGGACAATGAGATGCGGGTACAGGATACCTTG
 TCGTGTACACGCCACCCACGAGGGTGGTCTGGAATGCAGTTCCGTGTGCTGGGGACCAGACGCTCCAC
 CATCATCCAGGAGCTGGAGCCTGGTGTGGAGTACTTTATCCGTGTATTTGCCATCTGGAGAACAAGAAG
 AGCATTCTGTACAGGCCAGGGTGGCCAGTACTTACCTGCACCTGAAGGCCTGAAATCAAGTCCATCA
 AGGAGACATCTGTGGAAGTGGAGTGGGATCCTCTAGACATTGCTTTTGAACCTGGGAGATCATCTTCCG
 GAATATGAATAAAGAAGATGAGGAGAGATCACAAAAGCCTGAGGAGGCCAGAGACCTCTTACCGGCAA
 ACTGGTCTAGCTCCTGGCAAGAGTATGAGATATCTCTGCACATAGTAAAAACAATACCCGGGGCCCTG
 GCCTGAAGAGGGTGACCACCACACGCTTGGATGCCCCAGCCAGATCGAGGTGAAAGATGCACAGACAC
 CACTGCCTTGATCACCTGGTTCAAGCCCTGGCTGAGATCGATGGCATTGAGCTGACCTACGGCATCAA
 GACGTGCCAGGAGACCGTACCACCATCGATCTCACAGAGGACGAGAACCAGTACTCCATCCGGAACTGA
 AGCCTGACACTGAGTACGAGGTGTCCTCATCTCCCGCAGAGGTGACATGTCAAGCAACCCAGCCAAAGA
 GACCTTCAACAACAGGCCTCGATGCTCCCAGGAATCTTCGACGTGTTTCCAGACAGATAACAGCATCACC
 CTGGAATGGAGGAATGGCAAGGCAGCTATTGACAGTTACAGAATTAAGTATGCCCCATCTCTGGAGGGG
 ACCACGCTGAGGTTGATGTTCCAAAGAGCCAACAAGCCACAACCAAAACCACTCACAGGTCTGAGGCC
 GGGAACTGAATATGGGATGGAGTTTCTGCTGTGAAGGAAGACAAGGAGAGCAATCCAGCGACCATCAAC
 GCAGCCACAGAGTTGGACACGCCAAGGACCTTACGGTTTCTGAAACTGCAGAGACCAGCCTGACCCTGC
 TCTGGAAGACACCGTTGGCCAAATTTACCCTACCGCTCAATTACAGTCTCCCAACAGGCCAGGAGTGA
 GGGTGGAGTGCAGCTTCCAAGAAACACCACTTCTATGCTGAGAGGGCTGGAACCCAGGAGTACAAT
 GTCCTCTGACAGCCGAGAAAGGACAGACAAGAGCAAGCCGACGCTGTGAAGGCATCCACTGAACAAG
 CCCCTGAGCTGGAAAACCTCACCGTACTGAGGTTGGCTGGGATGGCCTCAGACTCAACTGGACCGCGC
 TGACCAGGCCTATGAGCACTTTATCATTAGGTGCAGGAGGCCAACAAGGTGGAGGCAGCTCGGAACCTC
 ACCGTGCCTGGCAGCCTTCGGGCTGTGGACATACCGGGCCTCAAGGCTGTACGCCTTACAGTCTCCA
 TCTATGGGGTATCCAGGGCTATAGAACACCAGTGTCTCTGCTGAGGCCTCCACAGGGGAACTCCCAA
 TTTGGGAGAGGTCGTGGTGGCCAGGTGGGCTGGGATGCCCTCAAACCTCAACTGGACTGTCCAGAAGG
 GCCTATGAGTACTTTTTTATTAGGTGCAGGAGGCTGACACAGTAGAGGCAGCCAGAACCTCACCGTCC
 CAGGAGGACTGAGGTCCACAGACCTGCCTGGGCTCAAAGCAGCCACTATTATACCATCACCATCCGCGG
 GGTCACTCAGGACTTCAGCACAACCCCTCTCTCTGTTGAAGTCTTGACAGAGGAGGTTCCAGATATGGGA
 AACCTCACAGTGACCGAGGTTAGCTGGGATGCTCTCAGACTGAACTGGACCACGCCAGATGGAACCTATG
 ACCAGTTTACTATTAGGTCCAGGAGGCTGACCAGGTGGAAGAGGCTCACAATCTCACGGTTCCTGGCAG
 CCTGCGTTCATGGAAATCCCAGGCCTCAGGGCTGGCACTCCTTACACAGTACCCCTGCACGGCGAGGTC
 AGGGGCCACAGCACTCGACCCCTTGCTGTAGAGGTCGTACAGAGGATCTCCACAGTGGGAGATTTAG
 CCGTGTCTGAGGTTGGCTGGGATGGCCTCAGACTCAACTGGACCCAGCTGACAATGCCTATGAGCACTT
 TGTCACTCAGGTGCAGGAGTCAACAAAGTGGAGGCAGCCAGAACCTCACGTTGCTGGCAGCCTCAGG
 GCTGTGGACATCCCGGGCCTCGAGGCTGCCACGCCTTATAGAGTCTCCATCTATGGGGTATCCGGGGCT
 ATAGAACACCAGTACTCTCTGCTGAGGCCTCCACAGCCAAAGAACCTGAAATGGAACTTAAATGTTTC
 TGACATAACTCCCAGAGCTTCAATCTCTCCTGGATGGCTACCGATGGGATCTTCGAGACCTTTACCATT
 GAAATTATTGATTCGAATAGGTTGCTGGAGACTGTGGAATATAATATCTCTGGTGTGAACGAACTGCC
 ATATCTCAGGGCTACCCCTAGTACTGATTTTATTGTCTACCTCTCTGGACTGTCTCCAGCATCCGGAC
 CAAAACCATCAGTGCCACAGCCACGACAGAGGCCCTGCCCTTCTGGAAAACCTAACATTTCCGACATT
 AATCCCTACGGGTTACAGTTTCTGGATGGCATCGGAGAATGCCTTTGACAGCTTTCTAGTAACGGTGG
 TGGATTCTGGAAAGCTGTGGACCCCAAGGAATCACACTTTCAGGAACCCAGAGGAAGCTGGAGCTTAG
 AGGCCTCATAACTGGCATTGGCTATGAGGTTATGGTCTCTGGCTTACCCAAGGGCATCAAACCAAGCCC
 TTGAGGGCTGAGATTGTTACAGAAGCCGAACCGGAAGTTGACAACCTTCTGGTTTCAGATGCCACCCAG
 ACGGTTTCCGTCTGCTGGACAGCTGATGAAGGGGCTTTCGACAATTTTGTCTCAAAATCAGAGATAC
 CAAAAGCAGTCTGAGCCACTGGAATAAACCCTACTTGGCCCCAAGCTACCAGGGACTTAAACAGGTCTC
 AGAGAGGCTACTGAATACGAAATGAACTCTATGGAATAAGCAAAGGAAGGCGATCCCAGACAGTCACTG

CTATAGCAACAACAGCCATGGGCTCCCCAAAGGAAGTCATTTTCTCAGACATCACTGAAAATTCGGCTAC
TGTCAGCTGGAGGGCACCCACGGCCCAAGTGGAGAGCTTCGGATTACCTATGTGCCATTACAGGAGGT
ACACCCCTCATGGTAACTGTGGACGGAACCAAGACTCAGACCAGGCTGGTGAAATCATACTGGCGTGG
AGTACCTTGTGACATCATCGCCATGAAGGGCTTTGAGGAAAGTGAACCTGTCTCAGGGTCATTACCAC
AGCTCTGGATGGCCATCTGGCTGGTGACAGCCAACATCACTGACTCAGAAGCCTTGGCCAGGTGGCAG
CCAGCCATTGCCACTGTGGACAGTTATGTCATCTCCTACACAGGGGAGAAAGTCCAGAAATTACACGCA
CGGTGTCCGGGAACACAGTGGAGTATGCTCTGACCGACCTCGAGCCTGCCACGGAATACACACTGAGAAT
CTTTGCAGAGAAAGGGCCCGAGAAGAGCTCAACCATCACTGCCAAGTTCACAACAGACCTCGATTCTCCA
AGAGACTTGACTGCTACTGAGGTTCAAGTCGAAAAGTGCCTCCTTACCTGGCGACCCCCCGGGCATCAG
TCACCGGTTACCTGCTGGTCTATGAATCAGTGGATGGCACAGTCAAGGAAGTCATTGTGGGTCCAGATAC
CACCTCTACAGCCTGGCAGACCTGAGCCCATCCACCCACTACACAGCCAAGATCCAGGCACTCAATGGG
CCCCTGAGGAGCAATATGATCCAGACCATCTTACCACAATTGGACTCCTGTACCCTTCCCCAAGGACT
GCTCCCAAGCAATGCTGAATGGAGACACGACCTCTGGCCTCTACACCATTTATCTGAATGGTGATAAGGC
TCAGGCGCTGGAAGTCTTCTGTGACATGACCTCTGATGGGGTGGATGGATTGTGTTCTGAGACGCAAA
AACGGACGCGAGAAGTTCTACAAAAGTGAAGGCATATGCTGCTGGATTGGGGACCGCAGAGAAGAAT
TCTGGCTTGGGCTGGACAACCTGAACAAAATCACAGCCAGGGGAGTACGAGCTCCGGGTGGACCTGCG
GGACCATGGGGAGACAGCCTTTGCTGTCTATGACAAGTTCAGCGTGGGAGATGCCAAGACTCGCTACAAG
CTGAAGGTGGAGGGGTACAGTGGGACAGCAGGTGACTCCATGGCCTACCAATGGCAGATCCTTCTCCA
CCTTTGACAAGGACACAGATTAGCCATCACCAGTGTGCTCTGTCTACAAAGGGGCTTCTGGTACAG
GAACTGTCACCGTGTCAACCTGATGGGGAGATATGGGGACAATAACCACAGTCAGGGCGTTAACTGGTTC
CACTGGAAGGGCCACGAACACTCAATCCAGTTTGCTGAGATGAAGCTGAGACCAAGCAACTCAGAAATC
TTGAAGGCAGGCGCAACGGGCA

ACGCGTACGCGGCGCTCGAG – GFP Tag – GTTTAA

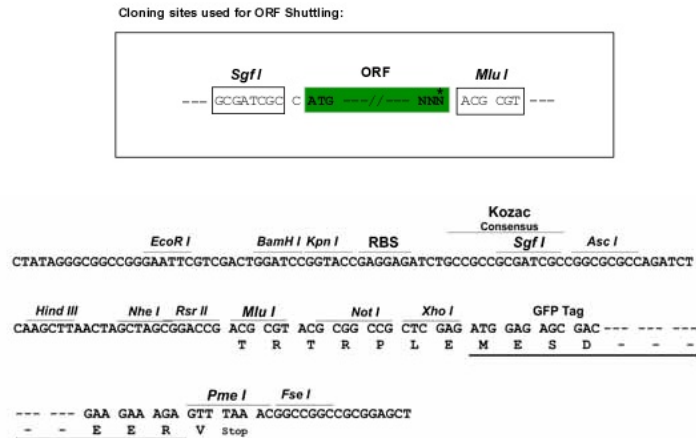
Protein Sequence: >RG215251 representing NM_002160
 Red=Cloning site Green=Tags(s)

```

MGAMTQLLAGVFLAFLALATEGGVLKQVIRHKRQSGVNTLPEENQPVVFNHVNLIKLPVGSQCSVDLES
ASGEKDLAPPSEPSFQEHTVDGENQIVFTHRINIPRRACGCAAAPDVKELLSRLEENLVSSLREQC
TAGAGCCLQPATGRLDTRPFCSGRGNFSTEGCGVCEPGWKGPNCEPECPGNCHLRGRCIDGQCICDDG
FTGEDCSQLACPSDCNDQKCVNGVICIFEGYAGADCSREICPVPCSEEHGTCVDGLCVCHDGFAGDDCN
KPLCLNNCYNRGRVCVENECVDEGFTGEDCSELICPNDCFDRGRCINGTCYCEEFTGEDCGKPTCPHAC
HTQGRCEEQCVCEGFAGLDCSEKRCPADCHNRGRVCVDRCECDGFTGADCGELKCPNGCSGHGRVCN
GQVCVCEGYTGEDCSQLRCPNDCHSRGRVCVEGKVCVEQGFQKGYDCSDMSPNDCHQGRVNGMVCVDDG
YTGEDCRDRQCPDRCSNRGLCVDGQVCEDGFTGPDCAELSCPNDCHGQGRVNGQVCHEGFMGDKCE
QRCPSDCHGQGRVVDGQICHEGFTGLDCGQHSRSDCNLQCVSGRCICNEGYSGEDCSEVSPPKDLV
VTEVTEETVNLAWDNEMRVTEYL VVYTPTHEGGLEMQFRVPGDQSTIIQELEPGVEYFIRVFAILENKK
SIPVSARVATYLPAPGLKFKSIKETSVEVEWPLDIAFETWEIIFRNMNKEDEGEITKSLRRPETSQRQ
TGLAPGQEYELSHIVKNNTRGPGKRVTTTRLDAPSQIEVKDVTDTTALITWFKPLAEIDGIELTYGIK
DYPGDRITIDLTEENQYSIGNLKPDEYEVSLISRRGDMSSNPAKETFTTGLDAPRNLRRVSQTNSIT
LEWRNGKAAIDSYRIKYAPISGGDHAEDVDPKSSQATTKTTLTGLRPGTEYIGVSAVKEDKESNPATIN
AATELDTPKDLQVSETAETSLTLLWKTPLAKFDRYRLNYSLPTGQWVGVLPRNTTSYVLRGLEPGQEYN
VLLTAEKGRHKSAPARVKAETQAPLENLTVTEVGDGLRLNWTAAADQAYEHFIIQVQEAANKVEAARNL
TVPGLSLRAVDIPGLKAATPYTVSIYGVIGYRTPVLSAEASTGETPNLGEVVVAEVDGWDALKNWTAPEG
AYEYFFIQVQEAADTVEAAQNLTVPGGLRSTDLPLGLKAATHYITIRGVTQDFSTTPLSVEVLTTEEVPDMG
NLTVTEVSWDALRLNWTTPDGTQDFTIQVQEAADQVEEAHNLTVPGSLRSMIEPGLRAGTPYTVTLHGEV
RGHSTRPLAVEVVTEDLPQLGDLAVSEVGDGLRLNWTAAADNAYEHFVIQVQEVNKEAAQNLTLPGSLR
AVDIPGLEAATPYRVSIIYGVIRGYRTPVLSAEASTAKEPEIGNLVSDITPESFNL SMMATDGIFETFTI
EIIDSNRLLLETVEYNISGAERTAHISGLPPSTDFIVYLSGLAPSIRTKTISATATTEALPLENLTISDI
NPYGFTVSWMASENAFDSFLVTVVDSGKLLDPQEF TSGTQRKLELRGLITGIGYEVMSGFTQGHQTKP
LRAEIVTEAEPEVDNLLVSDATPDGFRLSWTADEGVDFNFKIRDTKKQSEPLEITLLAPERTDRLTGL
REATEYEIELYGISKGRSQTVSAIATTAMGSPKEVIFSDITENSATVSWRAPTAQVESFRITYVPITGG
TPSMVTVDGTKTQTRLVKLIPGVEYLVSIAMKGFEESEPVSFSTALDGPGLVTANITDSEALARWQ
PAIATVDSYVISYTGKVEITRTVSGNTVEYALTDLEPATEYTLRIFAEKGPQKSSITAKFTTDLDSP
RDLTATEVQSETALLTWRPPRASVTGYLLVYESVDGTVKEVIVGPDTTSYSLADLSPSTHYTAKIQALNG
PLRSNMIQTIFTTIGLLYFPKDCSQAMNGDTSGLYTIYLNQDQAQALEVFCDMTSDGGGWIVFLRRK
NGRENFYQNWKAYAAGFGDRREEFWLGLDNLNKITAQQQYELRVDLRDHGETAFVYDKFSVGDATRYK
LKVEGYSGTAGDSMAYHNGRSFSTFDKDTDSAITNCALS YKGAFWYRNCHRVNLMGRYGDNNHSGQVGNWF
HWKGEHSIQFAEMKLRPSNFRNLEGRKRA
  
```

TRTRPLE - GFP Tag - V

Restriction Sites: SgfI-MluI

Cloning Scheme:


ACCN: NM_002160

ORF Size: 6603 bp

OTI Disclaimer: Due to the inherent nature of this plasmid, standard methods to replicate additional amounts of DNA in E. coli are highly likely to result in mutations and/or rearrangements. Therefore, OriGene does not guarantee the capability to replicate this plasmid DNA. Additional amounts of DNA can be purchased from OriGene with batch-specific, full-sequence verification at a reduced cost. Please contact our customer care team at custsupport@origene.com or by calling 301.340.3188 option 3 for pricing and delivery.

The molecular sequence of this clone aligns with the gene accession number as a point of reference only. However, individual transcript sequences of the same gene can differ through naturally occurring variations (e.g. polymorphisms), each with its own valid existence. This clone is substantially in agreement with the reference, but a complete review of all prevailing variants is recommended prior to use. [More info](#)

OTI Annotation: This clone was engineered to express the complete ORF with an expression tag. Expression varies depending on the nature of the gene.

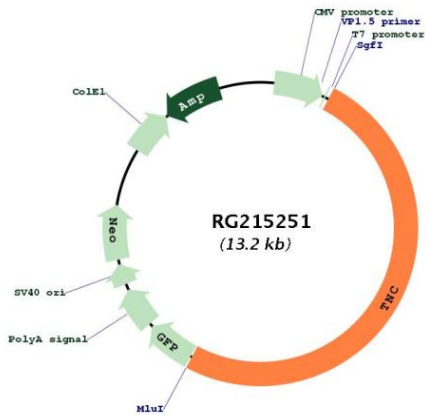
Components: The ORF clone is ion-exchange column purified and shipped in a 2D barcoded Matrix tube containing 10ug of transfection-ready, dried plasmid DNA (reconstitute with 100 ul of water).

- Reconstitution Method:**
1. Centrifuge at 5,000xg for 5min.
 2. Carefully open the tube and add 100ul of sterile water to dissolve the DNA.
 3. Close the tube and incubate for 10 minutes at room temperature.
 4. Briefly vortex the tube and then do a quick spin (less than 5000xg) to concentrate the liquid at the bottom.
 5. Store the suspended plasmid at -20°C. The DNA is stable for at least one year from date of shipping when stored at -20°C.

RefSeq: [NM_002160.1](#), [NP_002151.1](#)

RefSeq Size: 7560 bp
RefSeq ORF: 6606 bp
Locus ID: 3371
UniProt ID: [P24821](#)
Cytogenetics: 9q33.1
Domains: toxin_2, FBG, FN3, EGF, EGF
Protein Families: Druggable Genome, ES Cell Differentiation/IPS, Secreted Protein, Transmembrane
Protein Pathways: ECM-receptor interaction, Focal adhesion
Gene Summary: This gene encodes an extracellular matrix protein with a spatially and temporally restricted tissue distribution. This protein is homohexameric with disulfide-linked subunits, and contains multiple EGF-like and fibronectin type-III domains. It is implicated in guidance of migrating neurons as well as axons during development, synaptic plasticity, and neuronal regeneration. [provided by RefSeq, Jul 2011]

Product images:



Circular map for RG215251