

Product datasheet for **RG215247**

Integrin beta 1 (ITGB1) (NM_133376) Human Tagged ORF Clone

Product data:

Product Type:	Expression Plasmids
Product Name:	Integrin beta 1 (ITGB1) (NM_133376) Human Tagged ORF Clone
Tag:	TurboGFP
Symbol:	ITGB1
Synonyms:	CD29; FNRB; GPIIA; MDF2; MSK12; VLA-BETA; VLAB
Mammalian Cell Selection:	Neomycin
Vector:	pCMV6-AC-GFP (PS100010)
E. coli Selection:	Ampicillin (100 ug/mL)



[View online »](#)

ORF Nucleotide Sequence:

>RG215247 representing NM_133376
 Red=Cloning site Blue=ORF Green=Tags(s)

TTTTGTAATACGACTCACTATAGGGCGGCCGGAATTCGTCGACTGGATCCGGTACCGAGGAGATCTGCC
 GCC**CGGATCGCC**

ATGAATTTACAACCAATTTTCTGGATTGGACTGATCAGTTCAGTTTGTCTGTGTTTGTCTCAAACAGATG
 AAAATAGATGTTTAAAAGCAAATGCCAAATCATGTGGAGAATGTATACAAGCAGGGCCAAATTTGGGGTG
 GTGCACAATTCACATTTTTACAGGAAGGAATGCCTACTTCTGCACGATGTGATGATTTAGAAGCCTTA
 AAAAGAAGGGTTGCCCTCCAGATGACATAGAAAATCCCAGAGGCTCCAAAGATATAAAGAAAAATAAAA
 ATGTAACCAACCGTAGCAAAGGAACAGCAGAGAAGCTCAAGCCAGAGGATATTACTCAGATCCAACCACA
 GCAGTTGGTTTTGCGATTAAGATCAGGGGACCCACAGACATTTACATTAATCAAGAGAGCTGAAGAC
 TATCCCATTGACCTCTACTACCTTATGGACCTGTCTTACTCAATGAAAGACGATTTGGAGAATGAAAA
 GTCTTGGAACAGATCTGATGAATGAAATGAGGAGGATTACTTCGGAATTCAGAATTGGATTTGGCTCATT
 TGTGAAAAGACTGTGATGCCTTACATTAGCACAAACACCAGCTAAGCTCAGGAACCTTGCACAAGTGAA
 CAGAACTGCACCAGCCATTTAGCTACAAAAATGTGCTCAGTCTTACTAATAAAGGAGAAGTATTTAATG
 AACTTGTGGAAAACAGCGCATATCTGGAAATTTGGATTCTCCAGAAGGTGGTTTCGATGCCATCATGCA
 AGTTGCAGTTTGTGGATCACTGATTGGCTGGAGGAATGTTACACGGCTGCTGGTGTTCACAGATGCC
 GGGTTTCACTTTGCTGGAGATGGGAACTTGGTGGCATTGTTTTACCAATGATGGACAATGTCACCTGG
 AAAATAATATGTACAAATGAGCCATTATTATGATTATCCTTCTATTGCTCACCTTGCCAGAACTGAG
 TGAAAAAATATTCAGACAATTTTGCAGTTACTGAAGAATTTACAGCCTGTTTACAAGGAGCTGAAAAAC
 TTGATCCCTAAGTCAGCAGTAGGAACATTATCTGCAAATCTAGCAATGTAATTCAGTTGATCATTGATG
 CATACAATTCCTTTCCAGAAAGTCAATTTTGGAAAACGGCAAATTTGCAGAAGGAGTAACAATAAGTTA
 CAAATCTTACTGCAAGAACGGGGTGAATGGAACAGGGGAAAAATGGAAGAAAATGTTCCAATATTTCCATT
 GGAGATGAGGTTCAATTTGAAATAGCATAACTTCAAATAAGTGTCCAAAAAAGGATTCTGACAGCTTTA
 AAATTAGGCTCTGGCTTTACGGAGGAAGTAGAGTTATTCTTCAGTACATCTGTGAATGTGAATGCCA
 AAGCGAAGGCATCCCTGAAAGTCCCAAGTGTGATGAAGGAAATGGGACATTTGAGTGTGGCGCGTGCAGG
 TGCAATGAAGGGCGTGTGGTAGACATTGTGAATGCAGCACAGATGAAGTTAACAGTGAAGACATGGATG
 CTTACTGCAGGAAAGAAAACAGTTCAGAAATCTGCAGTAACAATGGAGAGTGCCTCTGCGGACAGTGTGT
 TTGTAGGAAGAGGATAATACAAATGAAATTTATTCTGGCAAATCTGCGAGTGTGATAATTTCAACTGT
 GATAGATCCAATGGCTTAATTTGTGGAGGAAATGGTGTGCAAGTGTCTGTGTGTGAGTGAACCCCA
 ACTACACTGGCAGTGCATGTGACTGTTCTTTGGATACTAGTACTTGTGAAGCCAGCAACGGACAGATCTG
 CAATGGCCGGGGCATCTGCGAGTGTGGTGTCTGTAAGTGTACAGATCCGAAGTTTCAAGGGCAAACGTGT
 GAGATGTGTCAGACCTGCCTTGGTGTCTGTGCTGAGCATAAAGAAATGTGTTTCAAGTGCAGACCTTCAATA
 AAGGAGAAAAGAAAGACACATGCACACAGGAATGTTTCTATTTAACATTACCAAGGTAGAAAGTCGGGA
 CAAATTACCCAGCCGGTCCAACCTGATCCTGTGTCCCATTGTAAGGAGAAGGATGTTGACGACTGTTGG
 TTCTATTTTACGTATTCAGTGAATGGGAACAACGAGGTGATGGTTCATGTTGTGGAGAATCCAGAGTGC
 CCACTGGTCCAGACATCATTCCAATTGTAGCTGGTGTGGTTGCTGGAATGTTCTTATTGGCCTTGCAAT
 ACTGCTGATATGGAAGCTTTTAAATGATAATTCATGACAGAAGGGAGTTTGCTAAATTTGAAAAGGAGAAA
 ATGAATGCCAAATGGGACACGGGTGAAAATCCTATTTATAAGAGTGCCGTAACAACCTGTGGTCAATCCGA
 AGTATGAGGGAAAA

ACGCGTACGCGGCCGCTCGAG - GFP Tag - GTTTAA

Protein Sequence: >RG215247 representing NM_133376
 Red=Cloning site Green=Tags(s)

```

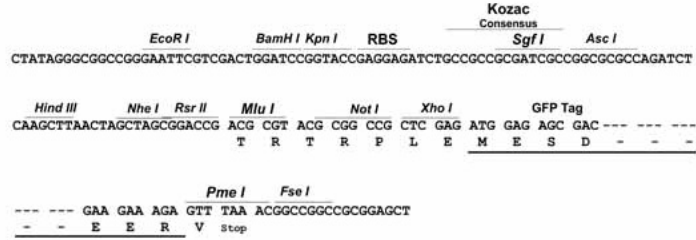
MNLQPIFWIGLISSVCCVFAQTDENRCLKANAKSCGECIQAGPNCGWCTNSTFLQEGMPTSARCDLLEAL
KKKGCPPDDIENPRGSKDIKKKNVNTNRSGTAEKLPEDITQIQPQQLVLRRLRSGEPQFTLKFRAED
YPIDLYLMDLSYSMKDDLENVKSLGTDLMNEMRRITSDFRIGFGSFVEKTVMPYISTTPAKLRNPCTSE
QNCTSPFSYKNVLSLTNKGEVFNELVGKQRI SGNLDSPEGGFDAIMQVAVCGSLIGWRNVTRLLVFSTDA
GFHFAGDGKLGGI VLPNDGQCHLENNMYTMSHYDYPSIAHLVQKLENNIQTIFAVTEEFQPVYKELKN
LIPKSAVGTL SANSSNVIQLIIDAYNSLSSEVILENGKLESGVTISYKSYCKNGVNGTGENGRKCSNISI
GDEVQFEISITSNKCPKKDSDFKIRPLGFTEEVEVILQYICECECQSEGIPESPKCHEGNGTFECGACR
CNEGRVGRHCECSTDEVNSEMDAYCRKENSSEICSNNGECVCGQCVCVKRDNTNEIYSGKFCECDNFNC
DRSNGLICGGNGVCKCRVCECNPNYTGSACDCSLDTSTCEASNGQICNGRGICECGVCKCTDPKFQGQTC
EMCQTCLGVCAEHKECVQCRAFNGKEKDTCTQEC SYFNITKVESRDKLPQVPQDPVSHCKEKDVDDCW
FYFTYSVNGNNEVMHVVENPECP TGPDIIPVAGVVAGIVLIGLALLLIWKL LMI IHDRREFAKFEKEK
MNAKWD TGENPIYKSAVTTVVNPKYEGK
  
```

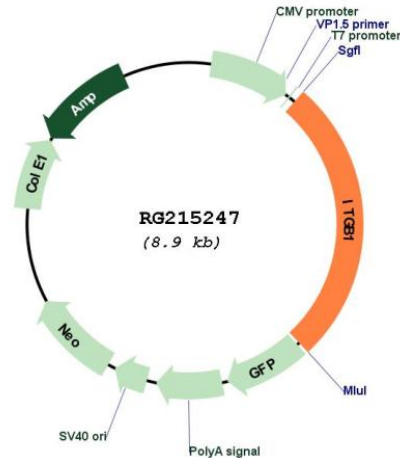
TRTRPLE - GFP Tag - V

Restriction Sites: Sgfl-MluI

Cloning Scheme:

Cloning sites used for ORF Shutting:



Plasmid Map:


ACCN: NM_133376

ORF Size: 2394 bp

OTI Disclaimer: The molecular sequence of this clone aligns with the gene accession number as a point of reference only. However, individual transcript sequences of the same gene can differ through naturally occurring variations (e.g. polymorphisms), each with its own valid existence. This clone is substantially in agreement with the reference, but a complete review of all prevailing variants is recommended prior to use. [More info](#)

OTI Annotation: This clone was engineered to express the complete ORF with an expression tag. Expression varies depending on the nature of the gene.

Components: The ORF clone is ion-exchange column purified and shipped in a 2D barcoded Matrix tube containing 10ug of transfection-ready, dried plasmid DNA (reconstitute with 100 ul of water).

Reconstitution Method:

1. Centrifuge at 5,000xg for 5min.
2. Carefully open the tube and add 100ul of sterile water to dissolve the DNA.
3. Close the tube and incubate for 10 minutes at room temperature.
4. Briefly vortex the tube and then do a quick spin (less than 5000xg) to concentrate the liquid at the bottom.
5. Store the suspended plasmid at -20°C. The DNA is stable for at least one year from date of shipping when stored at -20°C.

RefSeq: [NM_133376.1](#), [NP_596867.1](#)

RefSeq Size: 2533 bp

RefSeq ORF: 2397 bp

Locus ID: 3688

UniProt ID: [P05556](#)

Cytogenetics: 10p11.22

Domains:	INB, PSI
Protein Families:	Druggable Genome, ES Cell Differentiation/IPS, Transmembrane
Protein Pathways:	Arrhythmogenic right ventricular cardiomyopathy (ARVC), Axon guidance, Cell adhesion molecules (CAMs), Dilated cardiomyopathy, ECM-receptor interaction, Focal adhesion, Hypertrophic cardiomyopathy (HCM), Leukocyte transendothelial migration, Pathogenic Escherichia coli infection, Pathways in cancer, Regulation of actin cytoskeleton, Small cell lung cancer
Gene Summary:	Integrins are heterodimeric proteins made up of alpha and beta subunits. At least 18 alpha and 8 beta subunits have been described in mammals. Integrin family members are membrane receptors involved in cell adhesion and recognition in a variety of processes including embryogenesis, hemostasis, tissue repair, immune response and metastatic diffusion of tumor cells. This gene encodes a beta subunit. Multiple alternatively spliced transcript variants which encode different protein isoforms have been found for this gene. [provided by RefSeq, Jul 2008]