

Product datasheet for **RG215235**

IL21 (NM_021803) Human Tagged ORF Clone

Product data:

Product Type: Expression Plasmids
Product Name: IL21 (NM_021803) Human Tagged ORF Clone
Tag: TurboGFP
Symbol: IL21
Synonyms: CVID11; IL-21; Za11
Mammalian Cell Selection: Neomycin
Vector: pCMV6-AC-GFP (PS100010)
E. coli Selection: Ampicillin (100 ug/mL)
ORF Nucleotide Sequence: >RG215235 representing NM_021803
Red=Cloning site Blue=ORF Green=Tags(s)

TTTTGTAATACGACTCACTATAGGGCGGCCGGAATTCGTCGACTGGATCCGGTACCGAGGAGATCTGCC
GCC**CGATCGCC**

ATGAGATCCAGTCTGGCAACATGGAGAGGATTGTCATCTGTCTGATGGTCATCTTCTGGGGACTGG
TCCACAAATCAAGCTCCAAGGTCAAGATCGCCACATGATTAGAATGCGTCAACTATAGATATTGTTGA
TCAGCTGAAAAATTATGTGAATGACTTGGTCCCTGAATTTCTGCCAGCTCCAGAAGATGTAGAGACAAAC
TGTGAGTGGTCAGCTTTTCTGTTTTTCAGAAGGCCCACTAAAGTCAGCAAATACAGGAAACAATGAAA
GGATAATCAATGTATCAATTAAGCTGAAGAGGAAACCACCTCCACAAATGCAGGGAGAAGACAGAA
ACACAGACTAACATGCCCTTCATGTGATTCTTATGAGAAAAACCACCAAGAATTCCTAGAAAGATTC
AAATCACTTCTCCAAAAGATGATTCATCAGCATCTGCTCTAGAACACACGGAAGTGAAGATTC

ACGCGTACGCGGCCGCTCGAG - GFP Tag - GTTTAA

Protein Sequence: >RG215235 representing NM_021803
Red=Cloning site Green=Tags(s)

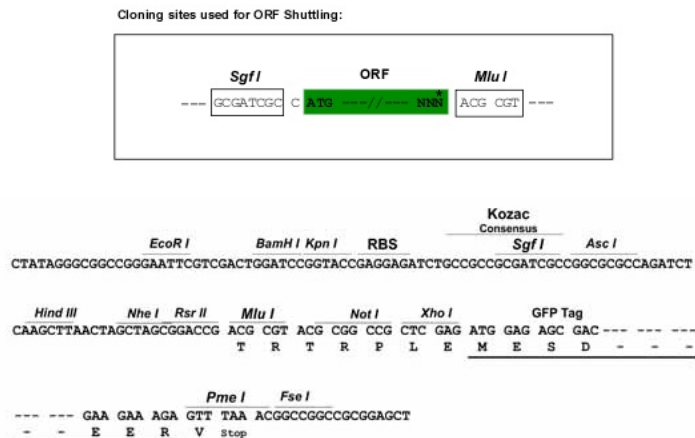
MRSSPGNMERIVICLMVIFLGLVHKSSSQQDRHMIRMRLIDIVDQLKNYVNDLVPEFLPAPEDVETN
CEWSAFSCFQKAQLKSANTGNNERIINVSIIKLRKPPSTNAGRQKHRLTCPSCDSYEKKPPKEFLERF
KSLQKMIHQHLSRTHGSEDS

TRTRPLE - GFP Tag - V

Restriction Sites: Sgfl-MluI



[View online »](#)

Cloning Scheme:


ACCN: NM_021803

ORF Size: 486 bp

OTI Disclaimer: The molecular sequence of this clone aligns with the gene accession number as a point of reference only. However, individual transcript sequences of the same gene can differ through naturally occurring variations (e.g. polymorphisms), each with its own valid existence. This clone is substantially in agreement with the reference, but a complete review of all prevailing variants is recommended prior to use. [More info](#)

OTI Annotation: This clone was engineered to express the complete ORF with an expression tag. Expression varies depending on the nature of the gene.

Components: The ORF clone is ion-exchange column purified and shipped in a 2D barcoded Matrix tube containing 10ug of transfection-ready, dried plasmid DNA (reconstitute with 100 ul of water).

Reconstitution Method:

1. Centrifuge at 5,000xg for 5min.
2. Carefully open the tube and add 100ul of sterile water to dissolve the DNA.
3. Close the tube and incubate for 10 minutes at room temperature.
4. Briefly vortex the tube and then do a quick spin (less than 5000xg) to concentrate the liquid at the bottom.
5. Store the suspended plasmid at -20°C. The DNA is stable for at least one year from date of shipping when stored at -20°C.

RefSeq: [NM_021803.1](#), [NP_068575.1](#)

RefSeq Size: 642 bp

RefSeq ORF: 489 bp

Locus ID: 59067

UniProt ID: [Q9HBE4](#)

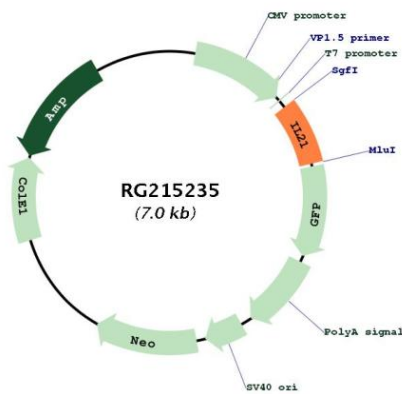
Cytogenetics: 4q27

Protein Families: Druggable Genome, Secreted Protein

Protein Pathways: Cytokine-cytokine receptor interaction, Jak-STAT signaling pathway

Gene Summary: This gene encodes a member of the common-gamma chain family of cytokines with immunoregulatory activity. The encoded protein plays a role in both the innate and adaptive immune responses by inducing the differentiation, proliferation and activity of multiple target cells including macrophages, natural killer cells, B cells and cytotoxic T cells. Dysregulation of this gene plays a role in multiple immune-mediated diseases including lupus, psoriasis and chronic inflammatory diseases. Alternatively spliced transcript variants encoding multiple isoforms have been observed for this gene. [provided by RefSeq, Dec 2011]

Product images:



Circular map for RG215235