

Product datasheet for **RG215231**

Factor V (F5) (NM_000130) Human Tagged ORF Clone

Product data:

Product Type:	Expression Plasmids
Product Name:	Factor V (F5) (NM_000130) Human Tagged ORF Clone
Tag:	TurboGFP
Symbol:	F5
Synonyms:	FVL; PCCF; RPRGL1; THPH2
Mammalian Cell Selection:	Neomycin
Vector:	pCMV6-AC-GFP (PS100010)
E. coli Selection:	Ampicillin (100 ug/mL)
ORF Nucleotide Sequence:	>RG215231 representing NM_000130 Red=Cloning site Blue=ORF Green=Tags(s)

TTTTGTAATACGACTCACTATAGGGCGGCCGGAATTCGTCGACTGGATCCGGTACCGAGGAGATCTGCC
GCC**CGATCGCC**

ATGTTCCAGGCTGCCACGCCTCTGGTCTGGTGGTCTTGGCACCAGCTGGTAGGCTGGGGAGCC
AAGGGACAGAAGCGGCACAGCTAAGGCAGTTCTACGTGGTCTCAGGGCATCAGTTGGAGCTACCGACC
TGAGCCCAAACTCAAGTTTGAATCTTCTGTAACCTCTTTAAGAAAATTGTCTACAGAGAGTATGAA
CCATATTTAAGAAAGAAAAACCACAATCTACCATTTTCAGGACTTCTGGGCCTACTTTATATGCTGAAG
TCGGAGACATCAAAAAGTTCACTTTAAAAATAAGGCAGATAAGCCCTTGAGCATCCATCCTCAAGGAAT
TAGGTACAGTAAATTATCAGAAGGTGCTTCTTACCTTGACCACACATTCCCTGCAGAGAAGATGGACGAC
GCTGTGGCTCCAGGCCGAGAATACACCTATGAATGGAGTATCAGTGAGGACAGTGGACCCACCCATGATG
ACCCTCCATGCCTCACACACATCTATTACTCCCATGAAAATCTGATCGAGGATTTCAACTCTGGGCTGAT
TGGGCCCTGCTTATCTGTAAAAAGGGACCCCTAACTGAGGGTGGGACACAGAAGACGTTTGACAAGCAA
ATCGTGTACTATTTGCTGTGTTTGTGAAAGCAAGAGCTGGAGCCAGTCATCATCCCTAATGTACACAG
TCAATGGATATGTAATGGGACAATGCCAGATAAACAGTTTGTGCCATGACCACATCAGCTGGCATCT
GCTGGGAATGAGCTCGGGCCAGAATTATCTCCATTCATTTCAACGGCCAGTCTGGAGCAGAACCAT
CATAAGGTCTCAGCCATCACCTTGTGTCAGTGCTACATCCATACCAGCAATATGACTGTGGGCCAGAGG
GAAAGTGGATCATATCTTCTCTCACCCAAAACATTTGCAAGCTGGGATGCAGGCTTACATTGACATTAA
AAACTGCCAAAAGAAAACCAGGAATCTTAAAGAAAATAACTCGTGAGCAGAGGCGGCACATGAAGAGTGG
GAATACTTCATTGCTGCAGAGGAAGTCAATTTGGGACTATGCACCTGTAATACCAGCGAATATGGACAAAA
AATACAGGTCTCAGCATTGGATAATTTCTCAAACCAAATTTGAAAACATTATAAGAAAGTTATGTACAC
ACAGTACGAAGATGAGTCTTACCAAACATACAGTGAATCCCAATATGAAAGAAGATGGGATTTGGGT
CCTATTATCAGAGCCAGGTCAGAGACACACTCAAATCGTGTTCAAAAATATGGCCAGCCGCCCTATA
GCATTTACCTCATGGAGTGACCTTCTCGCCTTATGAAGATGAAGTCAACTCTTCTTTACCTCAGGCAG
GAACAACACCATGATCAGAGCAGTTCAACCAGGGGAAACCTATACTTATAAGTGAACATCTTAGAGTTT



[View online »](#)

GATGAACCCACAGAAAATGATGCCAGTGCTTAAACAAGACCATACTACAGTGACGTGGACATCATGAGAG
ACATCGCCTCTGGGCTAATAGGACTACTTCTAATCTGTAAGAGCAGATCCCTGGACAGGCGAGGAATACA
GAGGGCAGCAGACATCGAACAGCAGGCTGTGTTTGTGTGTTTATGATGAGAACAAAAGCTGGTACCTTGAG
GACAACATCAACAAGTTTTGTGAAAATCCTGATGAGGTGAAACGTGATGACCCCAAGTTTTATGAATCAA
ACATCATGAGCACTATCAATGGCTATGTGCCTGAGAGCATAACTACTCTTGGATTCTGCTTTGATGACAC
TGTCCAGTGGCACTTCTGTAGTGTGGGGACCCAGAATGAAATTTGACCATCCACTTCACTGGGCACTCA
TTCATCTATGAAAAGAGGCATGAGGACACCTTGACCCTTCCCCATGCGTGGAGAACTGTGACGGTCA
CAATGGATAATGTTGAACTTGGATGTTAACTTCCATGAATTCTAGTCCAAGAAGCAAAAAGCTGAGGCT
GAAATTCAGGGATGTTAAATGTATCCAGATGATGATGAAGACTCATATGAGATTTTTGAACCTCCAGAA
TCTACAGTCATGGCTACACGAAAATGCATGATCGTTTAGAACCCTGAAGATGAAGAGAGTGATGCTGACT
ATGATTACCAGAACAGACTGGCTGCAGCATTAGGAATTAGGTCATTCCGAAACTCATCTTGAACAGGA
AGAAGAAGAGTTCAATCTTACTGCCCTAGCTCTGGAGAATGGCACTGAATTCGTTTCTTCGAACACAGAT
ATAATTGTTGGTCAAATATTCTTCCCAAGTAATATTAGTAAGTTCAGTGTCAATAACCTTGCAGAAC
CTCAGAAAGCCCCTTCTACCAACAAGCCACCACAGCTGGTCCCCACTGAGACACCTCATTGGCAAGAA
CTCAGTTCTCAATCTTCCACAGCAGAGCATTCCAGCCATATTCTGAAGACCCTATAGAGGATCCTCTA
CAGCCAGATGTCACAGGGATACGCTACTTTCCTTGGTCTGGAGAATTCAGAAGTCAAGAACATGCTA
AGCGTAAGGGACCCAAGGTAGAAAGAGATCAAGCAGCAAAGCACAGGTTCTCCTGGATGAAATTAAGC
ACATAAAGTTGGGAGACACCTAAGCCAAGACACTGGTTCTCCTCCGGAATGAGGCCCTGGGAGGACCTT
CCTAGCCAAGACACTGGTTCTCCTTCCAGAATGAGGCCCTGGGAGGACCCCTCCTAGTGATCTGTTACTCT
TAAAACAAAGTAACTCATCTAAGATTTGGTGGGAGATGGCATTGGCTTCTGAGAAAGGTAGCTATGA
AATAATCCAAGATACTGATGAAGACACAGCTGTTAACAATTGGCTGATCAGCCCCAGAATGCCTCAGCT
GCTTGGGGAGAAAGCACCCTCTTGCCAACAAGCCTGGAAGCAGAGTGGCCACCCAAAGTTTCTAGAG
TTAGACATAAATCTCTACAAGTAAGACAGGATGGAGGAAAGATAGACTGAAGAAAAGCCAGTTTCTCAT
TAAGACACGAAAAAGAAAAAGAGAAGCACACACCATGCTCCTTTATCTCCGAGGACCTTTCACCCCT
CTAAGAAGTGAAGCCTACAACACATTTTTCAGAAAAGACTTAAGCATTGTTGGTGCTTCATAAATCCA
ATGAAACATCTCTTCCACAGACCTCAATCAGACATTGCCCTCTATGGATTTTGGCTGGATAGCCTCACT
TCCTGACCATAATCAGAATTCCTCAAATGACACTGGTCAGGCAAGCTGTCCTCCAGGTCTTTATCAGACA
GTGCCCCCAGAGGAACACTATCAAACATTTCCCATTCAGACCCTGATCAAATGCACTCTACTTCAGACC
CCAGTCACAGATCCTCTTCTCCAGAGCTCAGTGAATGCTTGAGTATGACCGAAGTCACAAGTCTTCCC
CACAGATAAAGTCAAATGTCCCCTTCTCAGAACATGAAGTCTGGCAGACAGTCATCTCCAGACCTC
AGCCAGGTGACCCTCTCTCCAGAACTCAGCCAGACAAACCTCTCTCCAGACCTCAGCCACACGACTCTCT
CTCCAGAACTCATTCCAGAGAAACCTTCCCCAGCCCTCGGTGAGATGCCATTTCTCCAGACCTCAGCCA
TACAACCTTTCTCCAGACCTCAGCCATACAACCTTTCTTTAGACCTCAGCCAGACAAAACCTCTCTCCA
GAACTCAGTCAGACAAAACCTTTCTCCAGCCCTCGGTGAGATGCCCTTTCTCCAGACCTCAGCCATAACA
CCATTTCTCTAGACTTCAGCCAGACAAAACCTCTCTCCAGAACTCAGCCATATGACTCTCTCTCCAGAACT
CAGTCAGACAAAACCTTTCCCCAGCCCTCGGTGAGATGCCATTTCTCCAGACCTCAGCCATAACAACCTT
TCTCTAGACTTCAGCCAGACAAAACCTCTCTCCAGAACTCAGTCAAACAAAACCTTTCCCCAGCCCTCGGT
AGATGCCCTTTCTCCAGACCCAGCCATAACAACCTTTCTCTAGACCTCAGCCAGACAAAACCTCTCTCC
AGAACTCAGTCAGACAAAACCTTTCCCCAGACCTCAGTGAGATGCCCTTTTGCAGATCTCAGTCAAAT
CCCTTACCCAGACCTCGACCAGATGACACTTTCTCCAGACCTTGGTGAGACAGATCTTTCCCAAACCT
TTGGTCAGATGTCCCTTTCCCCAGACCTCAGCCAGGTGACTCTCTCTCCAGACATCAGTGACACCACCT
TCTCCGGATCTCAGCCAGATATCACCTCCTCCAGACCTTGATCAGATATTCTACCCTTCTGAATCTAGT
CAGTCATTGCTTCTTCAAGAATTAATGAGTCTTTTCTTATCCAGACCTTGGTCAGATGCCATCTCCTT
CATCTCTACTCTCAATGATACTTTTCTATCAAAGGAATTAATCCACTGGTTATAGTGGGCTCAGTAA
AGATGGTACAGATTACATTGAGATCATTCAAAGGAAGAGGTCCAGAGCAGTGAAGATGACTATGCTGAA
ATTGATTATGTGCCCTATGATGACCCTACAAAACCTGATGTTAGGACAAAACATCAACTCCTCCAGAGATC
CTGACAACATTGCAGCATGGTACCTCCGACGAACAATGGAACAGAAGAAATTATTACATTGCTGCTGA
AGAAATATCCTGGGATTATTCAGAATTTGTACAAGGGAAACAGATATTGAAGACTCTGATGATATTCCA
GAAGATACCACATATAAGAAAGTAGTTTTTCGAAAGTACCTCGACAGCACTTTTACCAAACGTGATCCTC
GAGGGGAGTATGAAGAGCATCTCGGAATTTCTGGTCTATTATCAGAGCTGAAGTGGATGATGTTATCCA
AGTTTCGTTTTAAAAATTTAGCATCCAGACCGTATTCTCTACATGCCCATGGACTTTCCTATGAAAAATCA
TCAGAGGGAAAGACTTATGAAGATGACTCTCTGAATGGTTAAGGAAGATAATGCTGTTTCAGCCAAATA

GCAGTTACCTACGTATGGCATGCCACTGAGCGATCAGGGCCAGAAAAGTCCTGGCTCTGCCTGTGGGGC
TTGGGCCTACTACTCAGCTGTGAACCCAGAAAAAGATATTCAGCTCAGGCTTGATAGGTCCCCTCCTAATC
TGCCAAAAAGGAATACTACATAAGGACAGCAACATGCCTGTGGACATGAGAGAATTTGTCTTACTATTTA
TGACCTTTGATGAAAAGAAGAGCTGGTACTATGAAAAGAAGTCCCGAAGTTCTTGAGACTCACATCCTC
AGAAATGAAAAATCCCATGAGTTTCACGCCATTAATGGGATGATCTACAGCTTGCTGGCCTGAAAATG
TATGAGCAAGAGTGGGTGAGTTACACCTGCTGAACATAGGCGGCTCCCAAGACATTCACGTGGTTCCT
TTCACGGCCAGACCTTGCTGAAAATGGCAATAAACAGCACCAGTTAGGGGTCTGGCCCCCTCTGCCTGG
TTCATTTAAAACCTTTGAAATGAAGGCATCAAAACCTGGCTGGTGGCTCCTAAACACAGAGGTTGGAGAA
AACAGAGAGCAGGGATGCAAACGCCATTTCTTATCATGGACAGAGACTGTAGGATGCCAATGGGACTAA
GCACTGGTATCATATCTGATTACAGATCAAGGCTTCAGAGTTTCTGGGTTACTGGGAGCCAGATTAGC
AAGATTAACAATGGTGGATCTTATAATGCTTGGAGTGTAGAAAACTTGACAGCAGAATTTGCCTCTAAA
CCTTGGATCCAGGTGGACATGCAAAGGAAGTCATAATCACAGGGATCCAGACCCAAGGTGCCAAACACT
ACCTGAAGTCCTGCTATACCACAGAGTTCTATGTAGCTTACAGTCCAACCAGATCAACTGGCAGATCTT
CAAAGGGAACAGCACAAGGAATGTGATGTATTTAATGGCAATTCAGATGCCTCTACAATAAAGAGAAT
CAGTTTGACCCACCTATTGTGGCTAGATATATTAGGATCTCTCCAACCTCGAGCCTATAACAGACCTACCC
TTCGATTGGAAGTGAAGGTTGTGAGGTAATGGATGTTCCACACCCCTGGGTATGGAAAATGGAAAGAT
AGAAAACAAGCAATCACAGCTTCTCGTTAAGAAAATCTTGGTGGGGAGATTACTGGGAACCCCTCCGT
GCCCGTCTGAATGCCAGGGACGTGTGAATGCCTGGCAAGCCAAGGCAACAACAATAAGCAGTGGCTAG
AAATTGATCTACTCAAGATCAAGAAGATAACGGCAATTATAACACAGGGCTGCAAGTCTCTGTCTCTGA
AATGTATGTAAAGAGCTATACCATCCACTACAGTGAGCAGGGAGTGGAAATGGAAACCATACAGGCTGAAA
TCCTCCATGGTGGACAAGATTTTGAAGGAAATACTAATACCAAAGGACATGTGAAGAATTTTTCAACC
CCCCAATCATTTCAGGTTTATCCGTGTCATTCCTAAAACATGGAATCAAAGTATTGCACCTCGCCTGGA
ACTCTTTGGCTGTGATTTTAC

ACGCGTACGCGGCCGCTCGAG - GFP Tag - GTTTAA

Protein Sequence: >RG215231 representing NM_000130
Red=Cloning site Green=Tags(s)

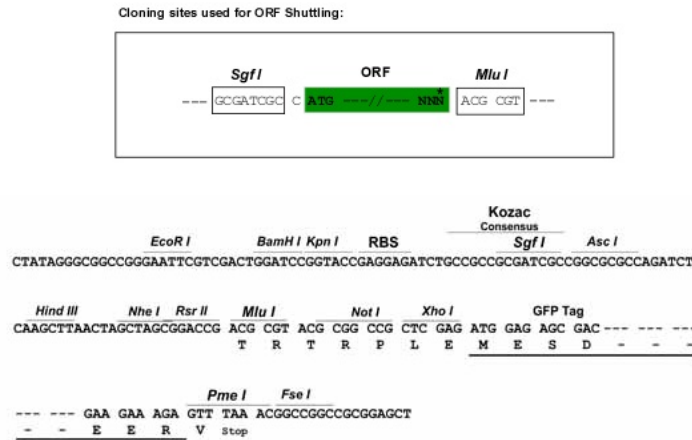
```

MFPGPCRLWVLVVLGTSWVGWGSQGTAAQLRQFYVAAQGISWSYRPEPTNSSLNLSVTSFKKIVYREYE
PYFKKEKQPQSTISGLLGPTLYAEVGDIIKVFHFNKADKPLSIHPQGIKYSKLSSEGASYLDHTFPAEKMD
AVAPGREYTYEWSISEDSGPTHDDPPCLTHIYSHENLIEDFNGLIGPLLIICKKGTLEGGTQKTFDKQ
IVLLFAVFDSEKSWSQSSSLMYTVNGYVNGTMPDITVCAHDHISWHLGMSGPELFSIHFNGQVLEQNH
HKVSAITLVSATSTTANMTVGPEGKWIISLTPKHLQAGMQAYIDIKNCPKTRNLKKITREQRRHMKRW
EYFIAAEVEIWDYAPVIPANMDKKYRSQHLDNFSNQIGKHYKVMYTYEDESFTKHTVNPMMKEDGILG
PIIRAQVRDITLIVFKNMASRPYSIYPHGVTFSPEYEDVNSSFTSGRNNTMIRAVQPGETYTYKWNILEF
DEPTENDAQCLTRPYYSVDVIMRDIASGLIGLLIICKSRSLDRRGIQRAADIEQQAVFAVDENKSWYLE
DNINKFCENPDEVKRDPKFEYSNIMSTINGYPESITTLGFCFDDTVQWHFCSVGTQNEILTIHFTGHS
FIYGRKHEDTLTFPMRGESVTVTMDNVGTWMLTSMNSSPRSKLRLKFRDVKCIPDDDEDSYEIFEPPE
STVMATRKMHDRLEPEDEESDADYDYQNRLLAAALGIRSFNRSSLNQEENLALALENGTEFVSNTD
IIVGSNYSSPSNISKFTVNNLAEPQKAPSHQQATTAGSPLRHLIGKNSVLNSSTAETHSSPYSEDPIEDPL
QPDVTGIRLLSLGAGEFRSQEHAKRKGPKVERDQAAKHRFSWMKLLAHKVGRHLSQDTGSPSGMRPWEDL
PSQDTGSPSRMRPWEDPPSDLLLLKQSNSSKILVGRWHLASEKGSYIEIQDDEDTAVNNWLISPQNASR
AWGESTPLANKPKQSGHPKFPVRHKSQVQRDGGKSRLLKKSQFLIKTRKKKKEKHTHAPLSPRTFHP
LRSEAYNTFSERRLKHSLVLHKSNETSLPTDLNQLPSMDFGWIASLPHNQNSSNDTGQASCPPGLYQT
VPPEEHYQTFPIQDPDQMHSTSDPSHRSSPELSEMLEYDRSHKSFPTDISQMSPSSEHEVWQTVISPD
SQVTLSPELSQTNLSPDLSHHTLSPELIQRNLSPALGQMPISPDLSHTTLPDLSHHTLSLDLSQTNLSP
ELSQTNLSPALGQMPISPDLSHTTISLDFSQTNLSPELSHMTLSPELSQTNLSPALGQMPISPDLSHTT
SLDFSQTNLSPELSQTNLSPALGQMPISPDLSHTTSLDLQTNLSPELSQTNLSPDLSEMPLFADLSQI
PLTPDLQMTLSPDLGETDLSPNFGQMSLSPDLQVTLSPDISDTLLPDLQISPPDLQIFYPSESS
QSLLLQEFNESFPYDLGQMPSPSSPTLNDTFLSKEFNPLVIVGLSKDGTDYIEIIPKEEVQSSSEDDYAE
IDYVYPYDDPYKTDVVRTNINSSRDPDNIAAWYLRSNNGNRRNYIAAEEISWDYSEFVQRETDIEDSDIP
EDTTYKVVFRKYL DSTFTKRDRPGEYEEHLGILGPIIRAQVDDVIQVRFKNLASRPYSLHAHGLSYEKS
SEGKTYEDDSPEWFKEDNAVQPNSSYTYVWHATERSGPESPGSACRAWAYYSAVNPEKDIHSGLIGPLLI
CQKGIHLKDSNMPVDMREFVLLFMTFDEKKSWYEEKSRSSWRLTSSEMKSHEFHAINGMIYSLPGLKM
YEQEWVRLHLLNIGGSQDIHVVFHFGQTLLENGNKQHQLGVWPLLPGSFKTLEMKASKPGWLLNTEVGE
NQQRAGMQTPFLIMDRDCRMPMGLSTGIIISDSQIKASEFLGYWEPRLARLNNGGSYNAWSVEKLAAEFASK
PWIQVDMQKEVITIGIQTQGAHYLKSCYTTEFYVAYSSNQINWQIFKGNSTRNVMYFNGNSDASTIKEN
QFDPPIVARYIRISPTRAYNRPTLRLELQGEVNGCSTPLGMENKGIENKQITASSFKKSWWGDYWEPFR
ARLNAQGRVNAWQAKANNKQWLEIDLKIKKITAIIITQGCKSLSEMYVKSytiHYSEQGVEWPKPYRLK
SSMVDKIFEGNTNTKGHVKNFFNPPIISRFIRVIPKTWNQSIARLELFGCDIY
    
```

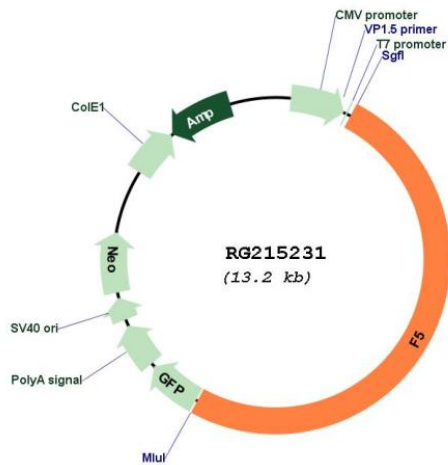
TRTRPLE - GFP Tag - V

Restriction Sites: SgfI-MluI

Cloning Scheme:



Plasmid Map:



ACCN: NM_000130

ORF Size: 6672 bp

OTI Disclaimer: The molecular sequence of this clone aligns with the gene accession number as a point of reference only. However, individual transcript sequences of the same gene can differ through naturally occurring variations (e.g. polymorphisms), each with its own valid existence. This clone is substantially in agreement with the reference, but a complete review of all prevailing variants is recommended prior to use. [More info](#)

OTI Annotation: This clone was engineered to express the complete ORF with an expression tag. Expression varies depending on the nature of the gene.

Components: The ORF clone is ion-exchange column purified and shipped in a 2D barcoded Matrix tube containing 10ug of transfection-ready, dried plasmid DNA (reconstitute with 100 ul of water).

Reconstitution Method:

1. Centrifuge at 5,000xg for 5min.
2. Carefully open the tube and add 100ul of sterile water to dissolve the DNA.
3. Close the tube and incubate for 10 minutes at room temperature.
4. Briefly vortex the tube and then do a quick spin (less than 5000xg) to concentrate the liquid at the bottom.
5. Store the suspended plasmid at -20°C. The DNA is stable for at least one year from date of shipping when stored at -20°C.

RefSeq: [NM_000130.2](#), [NP_000121.1](#)

RefSeq Size: 6914 bp

RefSeq ORF: 6675 bp

Locus ID: 2153

UniProt ID: [P12259](#)

Cytogenetics: 1q24.2

Domains: F5_F8_type_C, Cu-oxidase

Protein Families: Druggable Genome

Protein Pathways: Complement and coagulation cascades

Gene Summary: This gene encodes an essential cofactor of the blood coagulation cascade. This factor circulates in plasma, and is converted to the active form by the release of the activation peptide by thrombin during coagulation. This generates a heavy chain and a light chain which are held together by calcium ions. The activated protein is a cofactor that participates with activated coagulation factor X to activate prothrombin to thrombin. Defects in this gene result in either an autosomal recessive hemorrhagic diathesis or an autosomal dominant form of thrombophilia, which is known as activated protein C resistance. [provided by RefSeq, Oct 2008]