

Product datasheet for **RG215230**

CD239 (BCAM) (NM_001013257) Human Tagged ORF Clone

Product data:

Product Type:	Expression Plasmids
Product Name:	CD239 (BCAM) (NM_001013257) Human Tagged ORF Clone
Tag:	TurboGFP
Symbol:	BCAM
Synonyms:	AU; CD239; LU; MSK19
Mammalian Cell Selection:	Neomycin
Vector:	pCMV6-AC-GFP (PS100010)
E. coli Selection:	Ampicillin (100 ug/mL)



[View online »](#)

ORF Nucleotide Sequence:

>RG215230 representing NM_001013257
 Red=Cloning site Blue=ORF Green=Tags(s)

TTTTGTAATACGACTCACTATAGGGCGGCCGGGAATTCGTCGACTGGATCCGGTACCGAGGAGATCTGCC
 GCC**CGGATCGCC**

ATGGAGCCCCCGACGCACCGGCCAGGCGCGGGGCCCGCGGCTGCTGTTGCTCGCAGTCTGTCTGCTG
 CGGCGCACCCAGATGCCAGGCGGAGGTGCGCTTGTCTGTACCCCGCTGGTGGAGGTGATGCGAGGAAA
 GTCTGTCAATTCTGGACTGCACCCCTACGGGAACCCACGACCATTATATGCTGGAATGGTTCTTACCGAC
 CGCTCGGGAGCTCGCCCCGCTAGCCTCGGCTGAGATGCAGGGCTCTGAGCTCCAGGTCACAATGCACG
 ACACCCGGGGCCGAGTCCCCATACCAGCTGGACTCCAGGGCGCCTGGTGTGGCTGAGGCCAGGT
 GGGCGACGAGCGAGACTACGTGTGCTGGTGGGGCAGGGCGGCAGGCACTGCTGAGGCCACTGCGCGG
 CTCAACGTGTTTCAAAGCCAGAGGCCACTGAGGTCTCCCCAACAAAGGGACACTGTCTGTGATGGAGG
 ACTCTGCCAGGAGATCGCCACCTGCAACAGCCGGAACGGGAACCCGGCCCCAAGATCACGTGGTATCG
 CAACGGCAGCGCTGGAGGTGCCGTAGAGATGAACCCAGAGGGCTACATGACCAGCCGACGGTCCGG
 GAGGCCTCGGGCTGCTCTCCCTCACCAGCACCTCTACCTGCGGCTCCGCAAGGATGACCGAGACGCCA
 GCTTCCACTGCGCCGCCACTACAGCTGCCAGGGCCGCCACGGCCGCTGGACAGCCCCACCTTCCA
 CCTCACCTGCACTATCCACGGAGCACGTGCAGTTCTGGGTGGGAGCCGTCACCCAGCAGGCTGG
 GTACGCGAGGGTGACACTGTCCAGCTGCTCTGCCGGGGGACGGCAGCCCCAGCCGGAGTATACGCTTT
 TCCGCCTTCAGGATGAGCAGGAGGAAGTCTGAATGTGAATCTCGAGGGAACTTGACCTGGAGGGAGT
 GACCCGGGGCCAGAGCGGACCTATGGCTGCAGAGTGGAGGATTACGACGCGGAGATGACGTGCAGCTC
 TCCAAGACGCTGGAGCTGCGCGTGGCCTATCTGGACCCCTGGAGCTCAGCGAGGGGAAGGTGCTTTCCT
 TACCTCTAAACAGCAGTGCAGTCTGAACTGCTCCGTGCACGGCTGCCACCCCTGCCACTGCTGGAC
 CAAGGACTCCACTCCCCTGGGCGATGGCCCATGCTGTCGCTCAGTTCTATCACCTTCGATTCCAATGGC
 ACCTACGTATGTGAGGCCTCCCTGCCACAGTCCCGTCTCAGCCGACCCAGAACTTCACGCTGCTGG
 TCCAAGGCTCGCCAGAGCTAAAGACAGCGGAAATAGAGCCCAAGGCAGATGGCAGCTGGAGGGAAGGAGA
 CGAAGTCACTCATCTGCTCTGCCCGGGCCATCCAGACCCAAACTCAGCTGGAGCCAATTGGGGGGC
 AGCCCCGAGAGCCAATCCCGGACGGCAGGGTGGGTGAGCAGCTCTGACCTGAAAGTGACCAGCG
 CCCTGAGCCGATGGCATCTCCTGTGAAGCCTCAACCCACGGGAACAAGCGCCATGTCTTCCACTT
 CGGCACCGTGAAGCCCCAGACCTCCAGGCTGGAGTGGCCGTATGGCCGTGGCCGTGAGCGTGGCCCTC
 CTGCTCCTCGTGTGCTTCTACTGCGTGAGACGAAAGGGGGCCCTGCTGCCGCCAGCGGGGG
 AGAAGGGGGCTCCG

ACGCGTACGCGGGCCGCTCGAG - GFP Tag - GTTTAA

Protein Sequence:

>RG215230 representing NM_001013257
 Red=Cloning site Green=Tags(s)

MEPPDAPAQARGAPRLLLLAVLLAAHPDAQAEVRLSVPLLVEVMRGKSVILDCTPTGTHDHYMLEWFLTD
 RSGARPRLASAEMQGSSELQVTMHDTRGRSPPYQLDSQGRVLAEAQVGDERTDYVCVVRAGAAGTAEATAR
 LNVFAKPEATEVSPNKGTL SVMEDSAQEIATCNSRNGNPAPKITWYRNGQRLEVPVEMNPEGYMTSRTVR
 EASGLLSLTSTLYLRLRKDDRDASFHCAAHYSLEGRHGRLDSPTFHLTLHYPTHEHVQFWVGSPTPAGW
 VREGDTVQLLCRGGSPSPEYTLFRLQDEQEEVLNVNLEGNLTLEGVTRGQSGTYGCRVEDYDAADDVQL
 SKTLELRVAYLDPLELSEGKVLSLPLNSSAVVNCVHGLPTPALRWTKSTPLGDGPMLSLSSITFDSNG
 TYVCEASLPTVPVLSRTQNFLLVQGSPELKTAEIEPKADGWSWREGDEVTLICRSARGHPDPKLSWSQLGG
 SPAEPIPIGRQGWVSSSLTKVTSALSRDGISCEASNPHGNKRHVHFHGTVSPQTSQAGVAVMAVAVSVGL
 LLLVVAVFYCVRKGGPCCRQRREKQAP

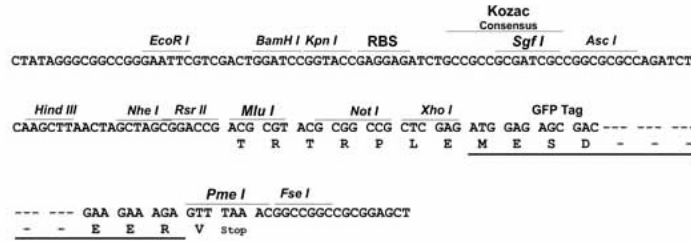
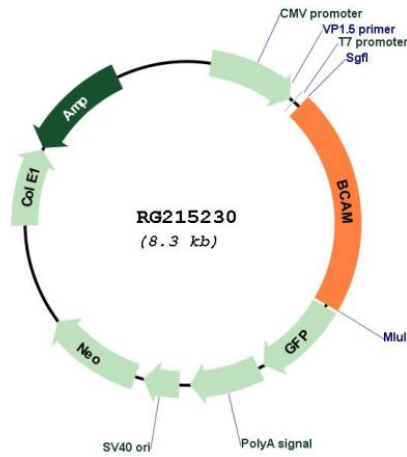
TRTRPLE - GFP Tag - V

Restriction Sites:

SgfI-MluI

Cloning Scheme:

Cloning sites used for ORF Shutting:


Plasmid Map:


ACCN: NM_001013257

ORF Size: 1764 bp

OTI Disclaimer:	The molecular sequence of this clone aligns with the gene accession number as a point of reference only. However, individual transcript sequences of the same gene can differ through naturally occurring variations (e.g. polymorphisms), each with its own valid existence. This clone is substantially in agreement with the reference, but a complete review of all prevailing variants is recommended prior to use. More info
OTI Annotation:	This clone was engineered to express the complete ORF with an expression tag. Expression varies depending on the nature of the gene.
Components:	The ORF clone is ion-exchange column purified and shipped in a 2D barcoded Matrix tube containing 10ug of transfection-ready, dried plasmid DNA (reconstitute with 100 ul of water).
Reconstitution Method:	<ol style="list-style-type: none">1. Centrifuge at 5,000xg for 5min.2. Carefully open the tube and add 100ul of sterile water to dissolve the DNA.3. Close the tube and incubate for 10 minutes at room temperature.4. Briefly vortex the tube and then do a quick spin (less than 5000xg) to concentrate the liquid at the bottom.5. Store the suspended plasmid at -20°C. The DNA is stable for at least one year from date of shipping when stored at -20°C.
RefSeq:	NM_001013257.2
RefSeq Size:	2434 bp
RefSeq ORF:	1767 bp
Locus ID:	4059
UniProt ID:	P50895
Cytogenetics:	19q13.32
Protein Families:	Druggable Genome, Transmembrane
Gene Summary:	This gene encodes Lutheran blood group glycoprotein, a member of the immunoglobulin superfamily and a receptor for the extracellular matrix protein, laminin. The protein contains five extracellular immunoglobulin domains, a single transmembrane domain, and a short C-terminal cytoplasmic tail. This protein may play a role in epithelial cell cancer and in vaso-occlusion of red blood cells in sickle cell disease. Polymorphisms in this gene define some of the antigens in the Lutheran system and also the Auberger system. Inactivating variants of this gene result in the recessive Lutheran null phenotype, Lu(a-b-), of the Lutheran blood group. Two transcript variants encoding different isoforms have been found for this gene. [provided by RefSeq, May 2012]