

Product datasheet for **RG215209**

Capicua (CIC) (NM_015125) Human Tagged ORF Clone

Product data:

Product Type: Expression Plasmids
Product Name: Capicua (CIC) (NM_015125) Human Tagged ORF Clone
Tag: TurboGFP
Symbol: CIC
Synonyms: MRD45
Mammalian Cell Selection: Neomycin
Vector: pCMV6-AC-GFP (PS100010)
E. coli Selection: Ampicillin (100 ug/mL)
ORF Nucleotide Sequence: >RG215209 representing NM_015125
Red=Cloning site Blue=ORF Green=Tags(s)

TTTTGTAATACGACTCACTATAGGGCGGCCGGAATTCGTCGACTGGATCCGGTACCGAGGAGATCTGCC
 GCCCGATCGCC

ATGTATTCGGCCACAGGCCCTGATGCCCGCTCCAGCGCGCCTCCCGTGGCCTCGGCATGTTCTGTT
 GGACGAATGTGGAACCTCGCTCTGTGGCTGTGTTCCCTTGGCACTCCTTAGTCCCCTTCTGGCACCCAG
 CCAGCCTGACCCCTCCGTGCAGCCGAGCGAGGCCAGCAACCTGCCAGCCACCCAGTGGCCTCCAACCAG
 AGCAAAGAACCTGCTGAGTCGGCAGCTGTTGCTCATGAACGGCCACCAGGTGGGACAGGGAGTGTGACC
 CTGAGCGGCCCTGGAGCCACATGCCCTGAGAGCCAGGACCCGACCCACACCCTTTGGGGTGGT
 GGAATCTGGTAAGGGTCCGCCTCCACCACGGAGGAGGAGCCTCCGGCCCCCAGGAGAGCCCCGGCTG
 GACAGTGAGACAGAGAGTGACCATGATGATGCCTTCTCTCCATCATGTCTCTGAGATCCAGTTGCCTC
 TACCGCCCCGAAAACGTCGGACCCAGTCCCTCAGTGCCTACCCAAGGAACGGGACTCATCTTCTGAGAA
 GGATGGACGCAGCCCCAACAAGCGGGAGAAGGACCACATCCGGCGGCCATGAATGCCTTCATGATCTTC
 AGCAAGCGGCACCGGCCCTGGTCCACCAGCGTATCCCAACCAGGACAACCGGACCGTCAAGATCC
 TGGGCGAGTGGTGGTATGCCCTGGGGCCAAGGAGAAGCAGAAGTACCACGACCTGGCCTTCCAGGTGAA
 GGAGGCCCACTTCAAGGCCACCCAGATTGGAAGTGGTGAACAAGGACCGAAAGAAGTCCAGCTCAGAG
 GCCAAGCCACGAGCCTGGGGCTGGCAGGAGGGACAAGGAGACGCGGGAGCGGAGCATGTCCGAGACGG
 GCACTGCTGCTGCCCTGGGGTGTCTCTGAGCTCCTGTCCGTTGACGCCAGACACTCCTGAGCTCAGA
 CACCAAGGCTCCGGGGAGCAGCTCCTGTGGGGCAGAACGGCTACACACAGTTGGGGGACCTGGCTCAGCC
 CGGCCCGAGCTTCTCCACAGCGGGGTACACAGCCTGGACGGCGGAGAAGTAGACAGTCAAGCGCTAC
 AGGAACTGACGCAGATGGTGTCTGGCCCTGCATCGTACTCTGGCCCAAAGCCTTCTACCCAGTATGGAGC
 TCCAGGACCCCTTGCAGCCCTGGTGGGGAGGTGCCTTGGCGGCCACTGGGCGGCCCTGCTGCC
 ACCCGAGCTTCTCGTTCTCAGCGTGGGCCAGTGGGACATGACGAGTATGAGGAGCGCATGGTATCT
 GTGAGGAGGAAGGGATGATGATGTCATTGCTGACGATGGCTTCGGCACCACTGACATTGATCTCAAGTG
 CAAGGAGCGGGTACCGACAGCGAGAGTGGGGACAGCTCTGGGGAGGCCAGAGGGCAACAAGGGCTTT



[View online »](#)

GGTCGGAAGGTGTTTTACCTGTGATCCGTTCCCTTACCCACTGCCGCCCCCACTGGACCCTGAGC
CCCCAGGGCCCCGGATCCTCCTGTAGCCTTTGGCAAAGGCTATGGTTCCGCCCCATCCTCCTGCGTC
CTCGCCTGCTTCTCCTCAGCCTCGGCAGCCACCTCCTTCTACTGGGCTCAGGAACCTCAAGGCCAG
GAGTCTGGTCAGGGCAGCACAGCGGGCCCCCTACGGCCCCACCCCTGGGGCTGGGGTCCAGCGACAC
TTCCAAGGCAACCCGGTTCTCCCAATGGATCCTGCCACCTCCGGCGCAAGAGACCCGAAAGTGTGG
TGGCCTGGAGCCACCAGGCCCTCAGTCATCGCGGCCCTCCAGCGGAGGAGGAACATCCTGCAGACA
CTGGTGTGCCCAACAAGGAGGAGCAAGAGGGCGGGAGCCAGAGTGCCTCCGCCCCGCCCCAT
CACTGGCCTATGGGGCCCCAGCAGCTCCCTGTCCCGTCCCTGCCGCCACCATGGTCACCAATGTGGTGCG
GCCTGTACAGCAGCACTCCTGTGCCATCGCCTCTAAGCCCTTCCCCACCTCTGGCCGGGCTGAGGCGTCT
CCAAATGACACAGCAGGTGCCAGGACTGAAATGGGCACTGGGTCTCGGGTGCCTGGGGGCTCCCCGTGG
GTGTGAGCTTAGTGATTCGGACAAGAAGTCGGCAGCAGCCACCTACCAGCCCCACACTTGGTGGCTGG
ACCCCTGTGGGCACTGTGGGAAGGGCCTGCCACTGTACTAACCTACTGGTGGGCACCCGGGGTAT
GGGGCCCCGCGCCCCCTGCTGTCCAGTTCATTGCCAGGGGGCCCTGGTGGTGGGACCACTGCGGGCT
CAGGAGCAGGTGTGGGAGTGGCCCAATGGGCCAGTACCCTGGGCATCCTGCAACCAGGTGCCCTGGG
CAAGGCTGGGGGAATCACCCAGGTACAGTACATCCTGCCACGCTGCCCCAGCAGCTTCAGTGGCACCT
GCCCCAGCACCAGCCCCCTGGGACCAAGGCAGCGGCTCCACGCGGCCCTGCACCCACCACCAGCATCCGTT
TCACCCTCCCACCGGCACTTCCACCAACGGCAAAGTCCTGGCTGCCACTGCACCCACTCCTGGCATCCC
CATCCTGCAGTCTGTACCCTCCGCCCCACCCCAAGCCAGTCAGTTTCTCCCGTGCAGGCCCCGCCCC
CCGGGTGGCTCAGCCAGCTGCTGCCTGGGAAGGTCCTAGTGCCTCTGGCCGCCCTAGCATGTCAGTGC
GGGGTGGAGGGGGCCGCCAGCCACTGCCACTGGTGGAGCCCGCCCTTCTCAGTACCTGTGCAGAATGGTGC
CCAGCCCCCAGCAAGATCATCCAGTGAACCCGGTGCCTGTGAGCACACCCAGCGGCTGGTGGCGCCC
CTGGGCCAGCCACACTCCCTGGACCCACTCTCAGCCTCAGAAGTCTGTTGCCCTCCTCCACCAGAA
TCACCTATGTGCAGTCAGCGGGCGGGCAGCGCTGCCCTGGGTACCAGCCCTGCGTCCAGCCAGGCTGG
AACAGTACCTCGTACGGGCCACGAGCTCTGTAGCTCTAGGCTTACCTCGCTGGGGCCAGCGGCCCC
GCCTTCGTGCAGCCCCTGCTCTCAGCAGGCCAAGCCCCACTGCTGGCTCCCGTCAAGTGGGCGTGTAC
CTGTGCCAGTCCCAGCTGCCGCTGCCTGTGCAGCCCCGGAGGTCCTGTATAACAGCATTTTACTC
TGGCAGCCCTGCACCCACCTCCTCAGCACCCTGGCCAGCCATCCCAGGCCCCCCCAAGCCTGGTCTAC
ACTGTGGCCACCAGCACAAACCCACCTGCAGCCACCATTTGCCCAAGGGCCCGCCAGCCCTGCCACTG
CCACCCAGCCCCGACTAGCCCTTCCCAGCGCCACAGCAGGTTCCATGACCTACAGCTTAGTGGCCCC
CAAGGCCAGCGGCCAGCCGAAGGCCCCCCAGAAAGTGAAGGCAGCCATCGCCAGCATCCCCTGGGG
TCCTTTGAGGCAGGTGCCTCTGGGGCGCCTGGCCCTGCACCCCGCAGCCTCTGGAGCCTGGCCAGTCC
GAGAGCCAAGTGGCCAGAGTCTGAGCTTGAGGGGAGCCACACCACCAGCCCTCCACCCCTGCCAGA
GACCTGGACTCCCACGGCCCGGAGCAGCCCCCACTGCCCCACCTGCTGAGGAGCGGACCAGCGCAAG
GGCCCTGAGACCATGGCCAGCAAATCCCCAGCTCATCTTCAGACTGGCGGCTCCCTGGGACGGGCTGG
AGAATCGTGGGAGCCTCCCCTCCTCCAGCCCGGCCAGCTCCAGCTGTAGCCCTGGTGGCAGCAG
CGAGAGCAGCAGTGGGCGGGCAGCCGGGACACCCCGAGCGCAAGGAGGCGGCTGGTACTGGCAAGAAG
GTGAAGGTGCGGCCCCCGCCCTGAAGAAGACCTTTGACTCTGTGGACAACAGGGTCTGTGAGAAGTGG
ACTTCGAAGAGCGCTTTGCTGAGTTGCCTGAGTTTCGGCCTGAGGAGTGTGCCCTCCCCACCCCTGCA
GTCTCTGGCCACCTCACCCGGGCCATCCTGGGCTTTACCGCAAGAAGAGGAAGAACTCCACGGACCTG
GATTCAGCACCCGAGGACCCACCTCGCCAAGCGCAAGATGAGAAGACGCTCCAGCTGCAGCTCGGAGC
CCAACACCCCAAGAGTGCCAAGTGCAGGGGGACATCTTACCTTTGACCGTACAGGTACAGAAGCCGA
GGACGTGCTTGGGGAGCTAGAGTATGACAAGGTGCCATACTCCTCCCTGCGGCGCACCCCTGGACCAGCGC
CGGGCCCTGGTCAATGCAGCTCTTTCAGGACCATGGCTTCTCCCGTCCAGCCAGGCCACAGCCGCTTCC
AGGCCCGCTATGCAGACATCTTCCCTCCAAGTTTGTCTGCAGTTGAAGATCCGTGAGGTGCGCCAGAA
GATCATGCAGGCTGCCACTCCCACGGAGCAGCCCCCTGGAGCTGAGGCTCCTCCTCCTGTACCGCCCCC
ACTGGCACCGCTGCTGCCCTGCCCCACTCCCAGCCCCGAGGGGGCCCTGACCCACCTACCCAGCT
CGGACTCTGGCAGGCCAGGCTGCCCGCCACTGCCTCCACCCCAAGTCCGGGGCTGGACAGCCTGG
CTGGGAGGGGCTCCCCAGCCCTCCCCCACCACCCAGGTCCTCCACAGCTGCCACAGGCAAG

ACGCGTACGCGGCCGCTCGAG – GFP Tag – GTTTAA

Protein Sequence: >RG215209 representing NM_015125
 Red=Cloning site Green=Tags(s)

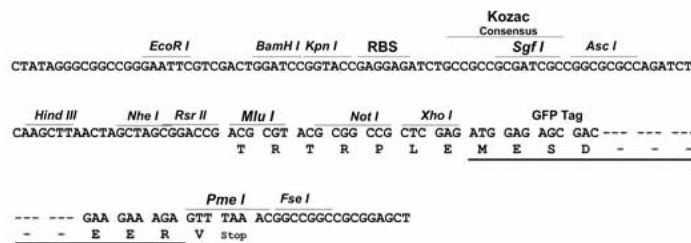
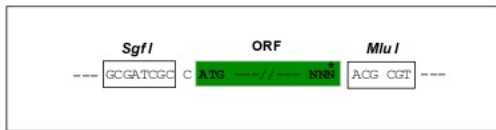
MYSahrPLMPASSAASRGLGMFVWTVNVEPRSVAVFPWHSLVPFLAPSQDPSPVQPSEAQQPASHVVASNQ
 SKPEAESAAVAHERPPGGTGSADPERPPGATCPESPGGPPHPLGVVESGKGPPTTEEEASGPPGEPRL
 DSETESDHDDAFLSIMSPEIQLPLPPGKRRTQSLSALPKERDSSSEKDGSRPNKREKDHIRRMNAFMIF
 SKRHRALVHQRHPNQDNRTVSKILGEWYALGPKEKQKYHDLAFQVKEAHFKAHPDWKWCNKDRKSSSE
 AKPTSLGLAGGHKETRERSMSETGTAAAPGVSSSELLSVAAQTLSSDTKAPGSSSCGAERLHTVGGPGSA
 RPRAFSHSGVHSLDGGEVDSQALQELTQMVSGPASYSGPKPSTQYGAPGPFPAAPGEGGALATGRPPLL
 TRASRSQRAASEDMTSDEERMVICEEEDDDVIADDFGTTDIDLKCKERVTDSESGDSSGEDPEGNKGF
 GRKVFSPVIRSSFTHCRPLDPEPPGPPDPPVAFGKGYGSAPSSSASSPASSASAAATSFSLGSGTFKAQ
 ESGQGSTAGLRRPPPGAGGPATPSKATRFLPMDPATFRRKRPEVSGGLEPPGPSVIAAPPSGGGNILQT
 LVLPPNKEEQEGGARVPSAPAPSLAYGAPAAPLSRPAATMVTNVRPVSSSTPVPVASKPFTSGRAEAS
 PNDTAGARTEMGTGSRVPGGSPLGVSLVYSDKKSAAATSPAPHLVAGPLLGTVGKAPATVNTLLVGT
 PGY GAPAPPVQFIAQGAPGGTTAGSGAGAGSGPNGVPLGILQPGALGKAGGITQVQYILPTLPQQLQVAP
 APAPAGTKAAAPSGPAPTTIRFTLPPGTSTNGKVLAAATAPGIPILQSVSPAPPKAQSVSPVQAPP
 PGGSAQLLPGKVLVPLAAPSMSVRGGGAGQPLPLVSPFVSPVQNGAQPISKIILQTPVPVSTPSGLVPP
 LGPATLPGPSTQPQKVLPSSTRITYVQSAGGHALPLGTSPASSQAGTVTSYGPTSSVALGFTSLGSPG
 AFVQPLL SAGQAPLLAPGQVGVSPVSPQLPPACAAPGGPVITAFYSGSPAPTSSAPLAQPSQAPPSLVY
 TVATSTTPAATILPKGPPAPATATPAPTSPFSSATAGSMTYSLVAPKAQRPSKAPQKVKAAIASIPVG
 SFEAGASGRPGPAPRQPLEPGPVREPTAPESELEGQTPPAPPPLPETWTPTARSSPPLPPAEERTSAK
 GPETMASKFPSSSDWRVPGQLENRGEPTPPSPAPAPAVAGGSSSESSGRAAGDTPERKEAAGTGKK
 VKVRPPLKKTDFSDVNRVLSEVDFEERFAELPEFRPEEVLPSPTLQSLATSPRAILGSYRKKRKNSTDL
 DSAPEDPTSPKRKMRRSSCSSEPNTPKSAKCEGDIFTFDRGTAEADVLGELEYDKVPYSSLRRTLDR
 RALVMQLFQDHGFPSAQTAAAFQARYADIFPSKVCLQLKIREVRQKIMQAATPTEQPPGAEAPLPVPPP
 TGTAAPAPTSPAGPDPTSPSSDSGTAQAAPPLPPPESGPGQPGWEGAPQSPPPPSTAAATGR

TRTRPLE - GFP Tag - V

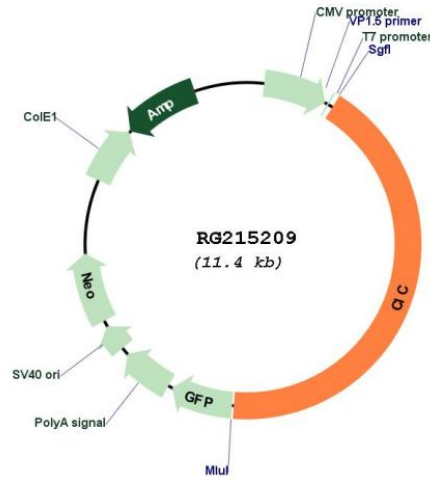
Restriction Sites: SgfI-MluI

Cloning Scheme:

Cloning sites used for ORF Shuttling:



Plasmid Map:



ACCN: NM_015125

ORF Size: 4824 bp

OTI Disclaimer: Due to the inherent nature of this plasmid, standard methods to replicate additional amounts of DNA in E. coli are highly likely to result in mutations and/or rearrangements. Therefore, OriGene does not guarantee the capability to replicate this plasmid DNA. Additional amounts of DNA can be purchased from OriGene with batch-specific, full-sequence verification at a reduced cost. Please contact our customer care team at custsupport@origene.com or by calling 301.340.3188 option 3 for pricing and delivery.

The molecular sequence of this clone aligns with the gene accession number as a point of reference only. However, individual transcript sequences of the same gene can differ through naturally occurring variations (e.g. polymorphisms), each with its own valid existence. This clone is substantially in agreement with the reference, but a complete review of all prevailing variants is recommended prior to use. [More info](#)

OTI Annotation: This clone was engineered to express the complete ORF with an expression tag. Expression varies depending on the nature of the gene.

Components: The ORF clone is ion-exchange column purified and shipped in a 2D barcoded Matrix tube containing 10ug of transfection-ready, dried plasmid DNA (reconstitute with 100 ul of water).

Reconstitution Method:

1. Centrifuge at 5,000xg for 5min.
2. Carefully open the tube and add 100ul of sterile water to dissolve the DNA.
3. Close the tube and incubate for 10 minutes at room temperature.
4. Briefly vortex the tube and then do a quick spin (less than 5000xg) to concentrate the liquid at the bottom.
5. Store the suspended plasmid at -20°C. The DNA is stable for at least one year from date of shipping when stored at -20°C.

RefSeq: [NM_015125.2](#), [NP_055940.2](#)

RefSeq Size: 5473 bp

RefSeq ORF: 4827 bp

Locus ID: 23152

UniProt ID: [Q96RK0](#)

Cytogenetics: 19q13.2

Gene Summary: The protein encoded by this gene is an ortholog of the *Drosophila melanogaster* capicua gene, and is a member of the high mobility group (HMG)-box superfamily of transcriptional repressors. This protein contains a conserved HMG domain that is involved in DNA binding and nuclear localization, and a conserved C-terminus. Studies suggest that the N-terminal region of this protein interacts with Atxn1 (GeneID:6310), to form a transcription repressor complex, and in vitro studies suggest that polyglutamine-expansion of ATXN1 may alter the repressor activity of this complex. Mutations in this gene have been associated with olidogdendrogliomas (PMID:21817013). In addition, translocation events resulting in gene fusions of this gene with both DUX4 (GeneID:100288687) and FOXO4 (GeneID:4303) have been associated with round cell sarcomas. There are multiple pseudogenes of this gene found on chromosomes 1, 4, 6, 7, 16, 20, and the Y chromosome. Alternative splicing results in multiple transcript variants encoding different isoforms. [provided by RefSeq, Feb 2015]