

Product datasheet for **RG215205**

NALP1 (NLRP1) (NM_033007) Human Tagged ORF Clone

Product data:

Product Type:	Expression Plasmids
Product Name:	NALP1 (NLRP1) (NM_033007) Human Tagged ORF Clone
Tag:	TurboGFP
Symbol:	NLRP1
Synonyms:	AIADK; CARD7; CILED; CLR17.1; DEFCAP; DEFCAP-L/S; JRRP; MSPC; NAC; NALP1; PP1044; SLEV1; VAMAS1
Mammalian Cell Selection:	Neomycin
Vector:	pCMV6-AC-GFP (PS100010)
E. coli Selection:	Ampicillin (100 ug/mL)
ORF Nucleotide Sequence:	>RG215205 representing NM_033007 Red=Cloning site Blue=ORF Green=Tags(s)

TTTTGTAATACGACTCACTATAGGGCGGCCGGAATTCGTCGACTGGATCCGGTACCGAGGAGATCTGCC
GCC**CGATCGCC**

ATGGCTGGCGGAGCCTGGGGCCGCTGGCCTGTTACTTGGAGTTCCTGAAGAAGGAGGAGCTGAAGGAGT
TCCAGTCTCTGCTCGCCAATAAAGCGCACTCCAGGAGCTCTTCGGGTGAGACACCCGCTCAGCCAGAGAA
GACGAGTGGCATGGAGGTGGCCTCGTACCTGGTGGCTCAGTATGGGGAGCAGCGGCCTGGGACCTAGCC
CTCCATACCTGGGAGCAGATGGGGCTGAGGTCACTGTGCGCCCAAGCCAGGAAGGGGCAGGCCACTCTC
CCTCATTCCCCTACAGCCCAAGTGAACCCACCTGGGGTCTCCAGCCAACCCACCTCCACCGCAGTGCT
AATGCCCTGGATCCATGAATTGCCGGCGGGTGCACCCAGGGCTCAGAGAGAAGGGTTTTGAGACAGCTG
CCTGACACATCTGGACGCCGCTGGAGAGAAATCTCTGCCTCACTCTCTACCAAGCTCTTCAAGCTCCC
CAGACCATGAGTCTCAAGCCAGGAGTCAACCAACGCCCCACATCCACAGCAGTCTGGGGAGCTGGGG
ATCCCCACCTCAGCCAGCCTAGCACCCAGAGAGCAGGAGGCTCCTGGGACCCAATGGCCTCTGGATGAA
ACGTCAGGAATTTACTACACAGAAATCAGAGAAAGAGAGAGAGAAATCAGAGAAAGGCAGGCCCCAT
GGGCAGCGGTGGTAGGAACGCCCCACAGGCGCACACCAGCCTACAGCCCAACCACCCATGGGAGCC
TTCTGTGAGAGAGAGCCTCTGTTCCACATGGCCCTGGAAAAATGAGGATTTTAACCAAAAATTCACACAG
CTGCTACTTCTACAAAGACCTCACCCAGAAGCCAAGATCCCCTGGTCAAGAGAAGCTGGCCTGATTATG
TGGAGGAGAATCGAGGACATTTAATTGAGATCAGAGACTTATTTGGCCCAGGCCTGGATACCAAGAACC
TCGCATAGTCATACTGCAGGGGGCTGCTGGAATTGGGAAGTCAACTGGCCAGGCAGGTGAAGGAAGCC
TGGGGGAGAGGCCAGCTGTATGGGGACCGCTTCCAGCATGTCTTCTACTTCAGCTGCAGAGAGCTGGCCC
AGTCCAAGGTGGTGAGTCTCGCTGAGCTCATCGAAAAAGATGGGACAGCCACTCCGGCTCCATTAGACA
GATCCTGTCTAGGCCAGAGCGGGTCTCTTTCATCCTCGATGGTGTAGATGAGCCAGGATGGGTCTTGACG
GAGCCGAGTTCTGAGCTCTGTCTGCACTGGAGCCAGCCACAGCCGGCGGATGCACTGCTGGGCAGTTTGC
TGGGAAAATACTTCCCAGGCATCCTTCTGATCACGGCTCGGACCACAGCTCTGCAGAACCTCAT



[View online »](#)

TCCTTCTTTGGAGCAGGCACGTTGGGTAGAGGTCTGGGGTTCTCTGAGTCCAGCAGGAAGGAATATTTCTACAGATATTTACAGATGAAAGGCAAGCAATTAGAGCCTTTAGGTTGGTCAAATCAAACAAAGAGCTCTGGGCCCTGTGTCTTGTGCCCTGGGTGTCTGGCTGGCCTGCACCTGCCTGATGCAGCAGATGAAGCGGAAAGGAAAACTCACACTGACTTCCAAGACCACCACAACCCCTGTCTACATTACCTTGCCAGGCTCTCCAAAGCTCAGCCATTGGGACCCAGCTCAGAGACCTGTCTCTGGCTGTGAGGGCATCTGGCAAAAAAAGACCCCTTTTCAAGAGCAGATGACCTCAGGAAGCATGGGTTAGATGGGGCCATCATCTCCACCTCTTGAAGATGGTATTCTTCAAGAGCACCCCATCCCTCTGAGCTACAGCTTATTACCTCTGTTTCCAAGATCTTTGCAGCAATGTCTATGTCTTGGAGGATGAGAAGGGGAGAGGTAAACATTCTAATTGCATCATAGATTTGGAAAAGACGCTAGAAGCATATGGAATACATGGCCTGTTTGGGGCATCAACCACACGTTTCTATTGGCCTGTTAAGTGATGAGGGGGAGAGAGATGGAGAACATCTTCACTGCCGGTGTCTCAGGGGAGGAACCTGATGCAGTGGTCCCGTCCCTGCAGCTGTGCTGCAGCCACACTCTGGAGTCCCTCCACTGCTGTACGAGACTCGGAACAAACGTTCTGACACAAGTGATGGCCATTTGGAAGAAATGGGCATGTGTGTAGAAACAGACATGGAGCTTATGTGTCACTTTCTGCATTAATTCAGCCGCCACGTGAAGAAGCTTCAGCTGATTGAGGGCAGGCAGCACAGATCAACATGGAGCCCCACCATGGTAGTCTGTTCAAGTGGTCCCAGTACAGATGCTCTATTGGCAGATTCTTTCTCCGTCTCAAGGTACCAGAAACCTGAAGGAGCTGGACCTAAGTGGAAACTCGCTGAGCCACTCTGCAGTGAAGAGTCTTTGTAAGACCCTGAGACGCCCTCGCTGCCTCCTGGAGACCTGCGGTTGGCTGGCTGTGGCCTCACAGCTGAGGACTGCAAGGACCTTGCCCTTTGGGCTGAGAGCCAACCAGACCCTGACCGAGCTGGACCTGAGCTTCAATGTGCTCACGGATGCTGGAGCCAAACACCTTTGCCAGAGACTGAGACAGCCGAGCTGCAAGCTACAGCGACTGCAGCTGGTGCAGCTGTGGCCTCACGTCTGACTGTGCCAGGACCTGGCCTCTGTGCTTAGTGCCAGCCCCAGCTGAAGGAGCTAGACCTGCAGCAGAACAACCTGGATGACGTTGGCGTGCAGTGTCTGTGAGGGGCTCAGGCATCCTGCCTGCAAACTCATAACGCTGGGAAAACCAAGTGTGATGACCCCTACTGAGGGCTGGATACGGGAGAGATGAGTAATAGCACATCTCACTAAGCGGCAGAGACTCGGATCAGAGAGGGCGCTTCCCATGTTGCTCAGGTAATCTCAAACCTCTGGACGTAGCAAGATCTTCCCAATTGCTGAGATTGCAGAGGAAAGCTCCCCAGAGGTAGTACCGGTGGAACCTTTGTGCGTGCCTTCTCCTGCCTCTCAAGGGGACCTGCATACGAAGCCTTTGGGGACTGACGATGACTTCTGGGCCACGGGCTGTGGCTACTGAGGTAGTTGACAAAAGAAAAGAACTGTACCGAGTTCACTTCCCTGTAGCTGGCTCCTACCGTGGCCAAACACGGTCTCTGCTTTGTGATGAGAGAAGCGGTGACCGTTGAGATGGAATTCTGTGTGGGACCAGTTCCTGGGTGAGATCAACCCACAGCACAGCTGGATGGTGGCAGGGCCTCTGCTGGACATCAAGGCTGAGCCTGGAGCTGTGGAAGCTGTGCACCTCCCTCACTTTGTGGCTCTCCAAGGGGCCATGTGGACACATCCCTGTTCAAATGGCCCACTTTAAAGAGGAGGGGATGCTCCTGGAGAAGCCAGCCAGGTGGAGCTGCATCACATAGTTCTGAAAACCCAGCTTCTCCCTTGGGAGTCTCCTGAAAATGATCCATAATGCCCTGCGCTTCAATCCCGTACCTCTGTGGTGTGCTTTACCACCGCTCCATCCTGAGGAAGTACCTTCCACCTCTACCTGATCCCAAGTGACTGCTCCATTGGAAGGAACTGGAGCTCTGCTATCGAAGCCCTGGAGAAGACCAGCTGTTCTCGGAGTTCTACGTTGGCCACTTGGGATCAGGGATCAGGCTGCAAGTGAAGACAAGAAAGATGAGACTCTGGTGTGGGAGGCTTGGTGAACCCAGGAGATCTCATGCCTGCAACTACTCTGATCCCTCCAGCCCGCATAGCCGTACCTTCACTCTGGATGCCCGCAGTTGCTGCACCTTGTGGACCAGTATCGAGAGCAGCTGATAGCCCGAGTGACATCGGTGGAGGTTGTCTTGGACAACTGCATGGACAGGTGCTGAGCCAGGAGCAGTACGAGAGGGTGTGGCTGAGAACACGAGGCCAGCCAGATGCGGAGCTGTTCACTTGGAGCCAGTCTGGGACCGGAAGTGCAAAGATGGACTCTACCAAGCCCTGAAGGAGACCCATCTCACCTCATTATGGAACCTCTGGGAGAAGGGCAGCAAAAAGGGACTCTGCCACTCAGCAGC

ACGCGTACGCGGCCGCTCGAG - GFP Tag - GTTTAA

Protein Sequence: >RG215205 representing NM_033007
 Red=Cloning site Green=Tags(s)

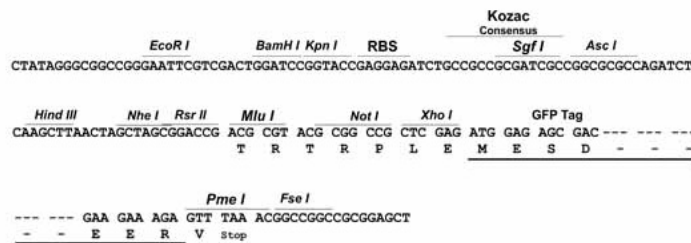
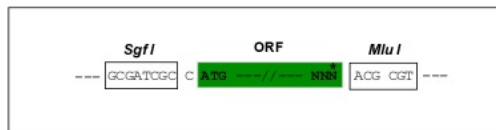
MAGGAWGRLACYLEFLKKEELKEFQLLLANKAHSRSSSGETPAQPEKTSMEVASYLVAQYGEQRAWDLA
 LHTWEQMLRSLCAQAQEGAGHSPSPYSPSEPHLGSPSQPTSTAVLMPWIHELPAAGCTQGSERRVLRQL
 PDTSGRRWREISASLLYQALPSSPDHESPSQESPNAPTSTAVLGSWGSPPQPSLAPREQEAPGTQWPLDE
 TSGIYYTEIREREREKSEKGRPPWAQVAVGTPPQAHTSLQPHHPWEPVRESLCSSTWPWKNEFDNQKFTQ
 LLLLQRPHRSQDPLVKRSWPDYVEENRGLIEIRDLFQPLDTPQEPRIIVILQGAAGIGKSTLARQVKEA
 WGRGQLYGRDFQHVYFSCRELAQSKVVSLAELIGKDGATPAPIRQILSRPERLLFILDGVDEPGWVLQ
 EPSSELCLHWSQPQPADALLGSLGKTLPEASFLITARTTALQNLIPSLEQARWVEVLGFSESSRKEYF
 YRYFTDERQAIRAFRLVKSNEKELWALCLVPVSWLACTCLMQQMKRKEKLTLSKTTTTLCLHYLAALQ
 AQPLGPQLRDLCSLAAEGIWQKTLFSPDDLKHKGLDGAIIISTFLKMGILQEHPISYSFIHLCFQEFF
 AAMSYVLEDEKGRGKHSNCIIDLEKTLAYGIHGLFGASTTRFLLGLLSDGEREMENIFHCRLSQGRNL
 MQWVPSLQLLLQPHSLESLHCLYETRNKTFLTQVMAHFEEGMVCVETDMELLVCTFCIKFSRHVKKLQLI
 EGRQHRSTWSPTMVVLRWVPVTDAYWQILFVSLKVTRNLKELDLSGNSLSHSAVKSCLKTLRRPRCLLE
 TLRLAGCGLTAEDCKDLAFGLRANQTLTELDLSFNVLTDAGAKHLQRLRQPSCKLQRLQLVSCGLTSDC
 CQDLASVLSASPSLKELDLQNNLDDVGVRLCEGLRHPACKLIRL GKPSVMTPTTEGLDTGEMSNSTSSL
 KRQRLGSEARAASHVAQANLKLDDVSKIFPIAIEAIEESSPEVVPVELLCPVSPASQGD LHTKPLGTDDDFW
 GPTGPVATEVVDKEKNLYRVHFPVAGSYRWPNTGLCFVMREAVTVEIEFCVWDQFLGEINPQHSWMVAGP
 LLDIKAEPGAVEAVHLPHFVALQGGHVDTSLFQMAHFKEEGMLLEKPARVELHHIVLENPFSPLGVLLK
 MIHNALRFIPVTSVLLYHRVHPEEVTFHLYLIPSDCSIRKELELCYRSPGEDQLFSEFYVGHLSGIRL
 QVKDKKDETLVWEALVKPGDLPATTLIPPARIAVPSPLDAPQLLHFVDQYREQLIARVTSVEVVDKHL
 GQVLSQEYERVAENTRPSQMRKLFSLSQSWDRKCKDGLYQALKETHPHLIMELWEKSGSKGLLPLSS

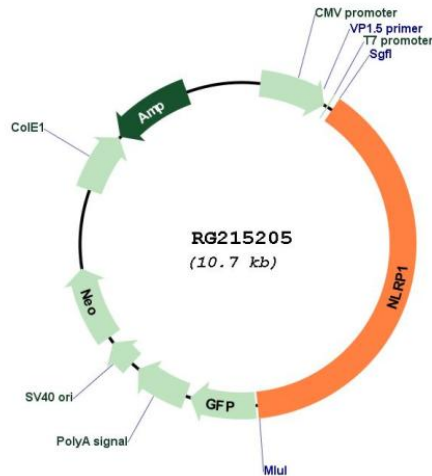
TRTRPLE - GFP Tag - V

Restriction Sites: SgfI-MluI

Cloning Scheme:

Cloning sites used for ORF Shuttling:



Plasmid Map:


ACCN: NM_033007

ORF Size: 4197 bp

OTI Disclaimer: The molecular sequence of this clone aligns with the gene accession number as a point of reference only. However, individual transcript sequences of the same gene can differ through naturally occurring variations (e.g. polymorphisms), each with its own valid existence. This clone is substantially in agreement with the reference, but a complete review of all prevailing variants is recommended prior to use. [More info](#)

OTI Annotation: This clone was engineered to express the complete ORF with an expression tag. Expression varies depending on the nature of the gene.

Components: The ORF clone is ion-exchange column purified and shipped in a 2D barcoded Matrix tube containing 10ug of transfection-ready, dried plasmid DNA (reconstitute with 100 ul of water).

Reconstitution Method:

1. Centrifuge at 5,000xg for 5min.
2. Carefully open the tube and add 100ul of sterile water to dissolve the DNA.
3. Close the tube and incubate for 10 minutes at room temperature.
4. Briefly vortex the tube and then do a quick spin (less than 5000xg) to concentrate the liquid at the bottom.
5. Store the suspended plasmid at -20°C. The DNA is stable for at least one year from date of shipping when stored at -20°C.

RefSeq: [NM_033007.4](#)

RefSeq Size: 5401 bp

RefSeq ORF: 4200 bp

Locus ID: 22861

UniProt ID: [Q9C000](#)

Cytogenetics: 17p13.2

Protein Families:	Druggable Genome
Protein Pathways:	NOD-like receptor signaling pathway
Gene Summary:	<p>This gene encodes a member of the Ced-4 family of apoptosis proteins. Ced-family members contain a caspase recruitment domain (CARD) and are known to be key mediators of programmed cell death. The encoded protein contains a distinct N-terminal pyrin-like motif, which is possibly involved in protein-protein interactions. This protein interacts strongly with caspase 2 and weakly with caspase 9. Overexpression of this gene was demonstrated to induce apoptosis in cells. Multiple alternatively spliced transcript variants encoding distinct isoforms have been found for this gene, but the biological validity of some variants has not been determined. [provided by RefSeq, Jul 2008]</p>