

Product datasheet for **RG215203**

ETS1 (NM_005238) Human Tagged ORF Clone

Product data:

Product Type:	Expression Plasmids
Product Name:	ETS1 (NM_005238) Human Tagged ORF Clone
Tag:	TurboGFP
Symbol:	ETS1
Synonyms:	c-ets-1; ETS-1; EWSR2; p54
Mammalian Cell Selection:	Neomycin
Vector:	pCMV6-AC-GFP (PS100010)
E. coli Selection:	Ampicillin (100 ug/mL)
ORF Nucleotide Sequence:	>RG215203 representing NM_005238 Red=Cloning site Blue=ORF Green=Tags(s)

TTTTGTAATACGACTCACTATAGGGCGGCCGGAATTCGTCGACTGGATCCGGTACCGAGGAGATCTGCC
GCC**CGATCGCC**

ATGAAGGCGGCCGTCGATCTCAAGCCGACTCTCACCATCATCAAGACGGAAAAAGTCGATCTGGAGCTTT
TCCCTCCCCGGATATGGAATGTGCAGATGTCCACTATTAACCCAAGCAGCAAAGAAATGATGTCTCA
AGCATTAAAGCTACTTTCAGTGGTTTCACTAAAGAACAGCAACGACTGGGGATCCAAAAGACCCCGG
CAGTGGACAGAAACCCATGTTCCGGACTGGGTGATGTGGGCTGTGAATGAATTCAGCCTGAAAGGTGAG
ACTTCCAGAAGTCTGTATGAATGGAGCAGCCCTCTGCGCCTGGGTAAGACTGCTTTCTCGAGCTGGC
CCCAGACTTTGTTGGGGACATCTTATGGGAACATCTAGAGATCCTGCAGAAAGAGGATGTGAAACCATAT
CAAGTTAATGGAGTCAACCCAGCCTATCCAGAATCCCCTATACCTCGGATTACTTCATTAGCTATGGTA
TTGAGCATGCCAGTGTGTTCCACCATCGGAGTCTCAGAGCCCAGCTTCATCACAGAGTCTATCAGAGC
GCTCCATCCCATCAGCTCGGAAGAGCTCCTCTCCCTCAAGTATGAGAATGACTACCCCTCGGTCAATTCTC
CGAGACCCTCTCCAGACAGACACCTTGCAGAATGACTACTTTGCTATCAAACAAGAAGTCGTACCCCGAG
ACAACATGTGCATGGGGAGGACCAAGTCGTGGTAAACTCGGGGCCAGGACTCTTTTGAAGCATAGAGAG
CTACGATAGTTGTGATCGCCTCACCCAGTCTGGAGCAGCCAGTCATCTTCAACAGCCTGCAGCGTGT
CCCTCCTATGACAGCTTCGACTCAGAGGACTATCCGGCTGCCCTGCCAACCAAGCCCAAGGGCACCT
TCAAGGACTATGTGCGGGACCGTGTGACCTCAATAAGGACAAGCCTGTATTCTGCTGCTGCCCTAGC
TGGCTACACAGGCAAGTGGACCAATCCAGCTATGGCAGTTTCTTCTGGAATTACTCACTGATAAATCCTGT
CAGTCTTTTATCAGCTGGACAGGAGATGGCTGGGAATTCAACTTTCTGACCCAGATGAGGTGGCCAGGA
GATGGGGAAAGAGGAAAAACAAACCTAAGATGAATTATGAGAACTGAGCCGTGGCTACGCTACTATTA
CGCAAAAAACATCATCCACAAGACAGCGGGAAACGCTACGTGTACCGCTTTGTGTGTGACCTGCAGAGC
CTGCTGGGGTACACCCCTGAGGAGCTGCACGCCATGCTGGACGTCAAGCCAGATGCCGACGAG

ACGCGTACGCGGCCGCTCGAG - GFP Tag - GTTTAA



[View online >](#)

Protein Sequence: >RG215203 representing NM_005238
Red=Cloning site Green=Tags(s)

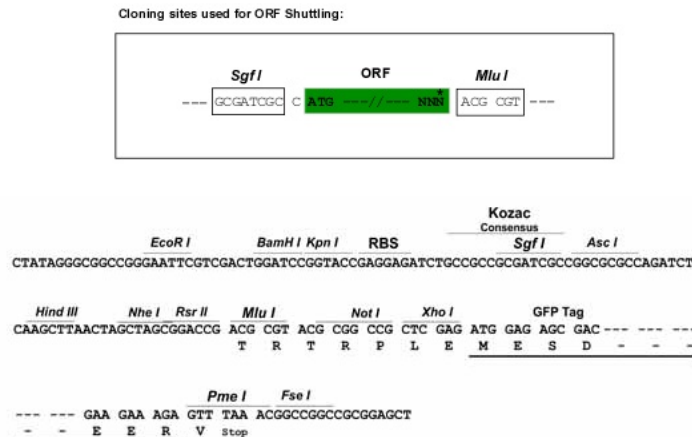
MKAAVDLKPTLTIIKTEKVDLELFPSPDMECADVPLLTPSSKEMMSQALKATFSGFTKEQQRLGIPKDPR
 QWTETHVRDWMWAVNEFSLKGVDFQKFCMNGAALCALGKDCFLLEAPDFVGDILWEHLEILQKEDVKPY
 QVNGVNPAYPESRYTSDYFISYGIIEHAQCVPPSEFSEPSFITESYQTLHPISSEELLSLKYENDYPSVIL
 RDPLQDTLQNDYFAIKQEVVTPDNMCMGRTSRGKLGQDSFESIESYDSCDRLTQSWSSQSSFNSLQRV
 PSYDSFDSEDYPAALPNHKPKGTFKDYVRDRADLNKDKPVIPAAALAGYTGSGPIQLWQFLLELLTDKSC
 QSFISWTGDGWEFKLSDPDEVARRWGKRKNPKMNYEKL SRGLRYYYDKNIIHKTAGKRYYYRFVCDLQS
 LLGYTPEELHAML DVKPDAD E

TRTRPLE – GFP Tag – V

Restriction Sites:

SgfI-MluI

Cloning Scheme:



ACCN: NM_005238

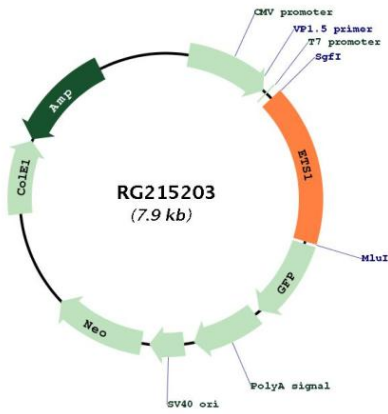
ORF Size: 1323 bp

OTI Disclaimer: Due to the inherent nature of this plasmid, standard methods to replicate additional amounts of DNA in E. coli are highly likely to result in mutations and/or rearrangements. Therefore, OriGene does not guarantee the capability to replicate this plasmid DNA. Additional amounts of DNA can be purchased from OriGene with batch-specific, full-sequence verification at a reduced cost. Please contact our customer care team at custsupport@origene.com or by calling 301.340.3188 option 3 for pricing and delivery.

The molecular sequence of this clone aligns with the gene accession number as a point of reference only. However, individual transcript sequences of the same gene can differ through naturally occurring variations (e.g. polymorphisms), each with its own valid existence. This clone is substantially in agreement with the reference, but a complete review of all prevailing variants is recommended prior to use. [More info](#)

OTI Annotation:	This clone was engineered to express the complete ORF with an expression tag. Expression varies depending on the nature of the gene.
Components:	The ORF clone is ion-exchange column purified and shipped in a 2D barcoded Matrix tube containing 10ug of transfection-ready, dried plasmid DNA (reconstitute with 100 ul of water).
Reconstitution Method:	<ol style="list-style-type: none">1. Centrifuge at 5,000xg for 5min.2. Carefully open the tube and add 100ul of sterile water to dissolve the DNA.3. Close the tube and incubate for 10 minutes at room temperature.4. Briefly vortex the tube and then do a quick spin (less than 5000xg) to concentrate the liquid at the bottom.5. Store the suspended plasmid at -20°C. The DNA is stable for at least one year from date of shipping when stored at -20°C.
RefSeq:	NM_005238.4
RefSeq Size:	5228 bp
RefSeq ORF:	1326 bp
Locus ID:	2113
UniProt ID:	P14921
Cytogenetics:	11q24.3
Domains:	ETS, SAM_PNT
Protein Families:	Druggable Genome, Transcription Factors
Protein Pathways:	Dorso-ventral axis formation, Pathways in cancer, Renal cell carcinoma
Gene Summary:	This gene encodes a member of the ETS family of transcription factors, which are defined by the presence of a conserved ETS DNA-binding domain that recognizes the core consensus DNA sequence GGAA/T in target genes. These proteins function either as transcriptional activators or repressors of numerous genes, and are involved in stem cell development, cell senescence and death, and tumorigenesis. Alternatively spliced transcript variants encoding different isoforms have been described for this gene.[provided by RefSeq, Jul 2011]

Product images:



Circular map for RG215203