

Product datasheet for **RG215170**

Carboxypeptidase Z (CPZ) (NM_003652) Human Tagged ORF Clone

Product data:

Product Type:	Expression Plasmids
Product Name:	Carboxypeptidase Z (CPZ) (NM_003652) Human Tagged ORF Clone
Tag:	TurboGFP
Symbol:	Carboxypeptidase Z
Mammalian Cell Selection:	Neomycin
Vector:	pCMV6-AC-GFP (PS100010)
E. coli Selection:	Ampicillin (100 ug/mL)



[View online »](#)

ORF Nucleotide Sequence:

>RG215170 representing NM_003652
 Red=Cloning site Blue=ORF Green=Tags(s)

TTTTGTAATACGACTCACTATAGGGCGGCCGGGAATTCGTCGACTGGATCCGGTACCGAGGAGATCTGCC
 GCC**CGCATCGCC**

ATGCCGCCCCCGCCGCGCTGCTCCTTACAGTCTGGTCTGCGCCGCTGCCGCGGGGTGCGAGT
 TTGAGCGGAACCCCGCCGCCACCTGCGTGGACCTGCAGCTCAGGACCTGCAGCGATGCCGCTACAACCA
 CACCACCTTCCCAACCTGCTTCAGCACCGGTCGTTGGGAGGTGGTGGAGGCCAGCTCCGAGTACATCCTG
 CTGAGCGTTTACACCAGCTCCTGGAAGGCCAGTGAACCCGGACCTGCGGCTGCTGGGCTGTGCTGTGC
 TGGCCCCCGGTGTGAGGGCGGCTGGGTGCGCAGACCCTGCCGGCACATCTGCGAGGGCCTGCGGGAGGT
 CTGCCAGCCCGCCTTCGACGCCATTGACATGGCCTGGC : C : CTACTTCCTTGACTGCCACCCTACTTC
 ACGAGAGAGGACGAGGGTGTATGACCCGCTGGAGAAGCTTCGGGGAGGCTGGAGGCTGACGAGGCAC
 TGCCCTCAGGGTGCCTGCCGCCACCTTCATCCGCTTCAGCCACCCTCTACGCCAGATGGTGCCTGTGCT
 GAGGCGGACGGCCTCCCGCTGTGCCACGTGGCCAGGACCTACAGCATCGGGCGCAGCTTCGACGGCAGG
 GAGCTGCTGGTATCGAGTTCCTCAGCCGCCCGGCCAGCACGAGCTGATGGAGCCCGAGGTGAAGCTCA
 TCGGAACATTATGGCAACGAGGTGGCGGGCCGGGAGATGCTCATCTACCTAGCCACGTACCTGTGCTC
 TGAGTACCTGCTTGGTAACCCCGCATCCAGCGCTGCTCAACACCACCCGCATCCACCTGCTGCCCTCC
 ATGAACCTGACGGTATGAGGTGGCAGCTGCCAGGGTGCCTGCTACAACCGGTGGACGAGCGGGAGGC
 AGAACGCGCAGAACCTGGATCTGAACCGAAATTTCCCGGACCTGACGTCAGGACTACTCCGGCTGGCGGA
 GACCCGCGGCGCACGACGACCCACATCCCATCCCCAGCACTACTGGTGGGGTAAAGTGGCCCCGGAG
 ACAAAAGCAATCATGAAGTGGATGCAGACCATACCCTTTGTGCTCTCAGCCAGCCTTCATGGGGCGGACC
 TGGTGGTGTCTACCCCTTCGACTTCTCAAGCACCCCCAGGAGGAGAAGATGTTTTCTCCACGCCCGA
 CGAGAAGATGTTCAAGCTGTCTCAGAGCCTACGCTGATGTCCACCCCATGATGATGGACAGGTGGAG
 AATAGGTGTGGAGCAATTTCTGAAGAGGGGAGCATCATCAACGGGGCRGACTGGTACAGCTTACGG
 GAGGCATGTCCGACTTCAACTACCTGCACACCACTGCTTTGAGATCACGGTAGAGCTGGGCTGTGTGAA
 GTTCCCCCGGAGGAGCCCTGTACACACTCTGGCAGCACAACAAGGAGTCACTCCTGAATTTCTGTGGAG
 ACGGTGCACCGGGGCATCAAAGGTGTGGTACAGATAAATTCGGCAAGCCAGTCAAAAACGCCCGGATCT
 CAGTCAAAGGCATTGCCACGACATCACCACAGCCCGAGTGGTACTACTGGAGACTGCTGCCCCAGG
 TATCCACATTGTCATTGCCAAGCCCTGGCTACGCCAAAGTCAAGAAAGTCAATCATCCCGCCCGG
 ATGAAGAGGGCTGGCCGTGTGGACTTCTTCTGCAACCTCTGGGGATGGGACCAAGAATTTATTCATG
 GGCTGCGGAGGACTGGGCCCCACGACCCGCTGGGAGGTGCCAGCTCTTTGGGGGAGGCCACGGAGCCGA
 CCCGCTCCGGGCGCGCAGGCAGCCCTCGGCCGACGGGAGTAAGCCCTGGTGGTGTCTACTTCACATCG
 CTGAGCACCCACAGGCCACGCTGGCTGCTCAAGTAC

ACGCGTACGCGGGCCGCTCGAG – GFP Tag – GTTTAA

Protein Sequence:

>RG215170 representing NM_003652
 Red=Cloning site Green=Tags(s)

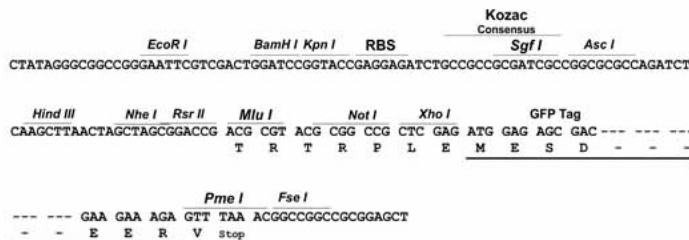
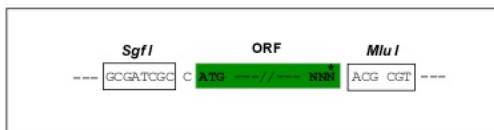
MPPPPPLLLLTVLVVAAARPGCFERNPAATCVDLQLRRTCSDAAYNHHTFPNLLQHRSWVEVASSEYIL
 LSVLHQLLEGQCNPDRLLLGCAVLAAPRCEGGWVRRPCRHI CEGLREVCQPAFDAIDMAWXXYFLDCHRYF
 TREDEGCYDPLEKLRGGLADEALPSGLPPTFIRFSSHSAQMVRLRRTASRCAHVARTYSIGRSFDGR
 ELLVIEFSSRPGQHELMPEVKLIGNIHGNEVAGREMLIYLAQYLCEYLLGNPRIQRLNNTRIHLLPS
 MNPDGYEVAEAEGAGYNGWTSGRQNAQNLDLNRNFPDLTSEYYRLAETRGARSDHIPQHYWWGKVAPE
 TKAIMKWMQTIPIFVLSASLHGGDLVVSYPFDKSKHPQEEKMFSPTPDEKMFKLLSRAYADVHPMMMDRSE
 NRCGGNFKRGSINGXDWYSFTGGMSDFNYLHTNCFEITVELGCVKFPPEEALYTLWQHNKESLLNFVE
 TVHRGIKGVVTDKFGKPVKNARISVKGIRHDITAPDGDYWRLLPPGIHIVIAQAPGYAKVIKKVIIPAR
 MKRAGRVDIFILQPLGMGPKNFIHGLRRTGPHDPLGGASSLGEATEPDPLRARRQPSADGSKPWWWSYFTS
 LSTHRPRWLLKY

TRTRPLE – GFP Tag – V

Restriction Sites: SgfI-MluI

Cloning Scheme:

Cloning sites used for ORF Shutting:



ACCN: NM_003652

ORF Size: 1926 bp

OTI Disclaimer: The molecular sequence of this clone aligns with the gene accession number as a point of reference only. However, individual transcript sequences of the same gene can differ through naturally occurring variations (e.g. polymorphisms), each with its own valid existence. This clone is substantially in agreement with the reference, but a complete review of all prevailing variants is recommended prior to use. [More info](#)

OTI Annotation: This clone was engineered to express the complete ORF with an expression tag. Expression varies depending on the nature of the gene.

Components: The ORF clone is ion-exchange column purified and shipped in a 2D barcoded Matrix tube containing 10ug of transfection-ready, dried plasmid DNA (reconstitute with 100 ul of water).

Reconstitution Method:

1. Centrifuge at 5,000xg for 5min.
2. Carefully open the tube and add 100ul of sterile water to dissolve the DNA.
3. Close the tube and incubate for 10 minutes at room temperature.
4. Briefly vortex the tube and then do a quick spin (less than 5000xg) to concentrate the liquid at the bottom.
5. Store the suspended plasmid at -20°C. The DNA is stable for at least one year from date of shipping when stored at -20°C.

RefSeq: [NM_003652.2](#), [NP_003643.2](#)

RefSeq Size: 2196 bp

RefSeq ORF: 1926 bp

Locus ID: 8532

UniProt ID: [Q66K79](#)

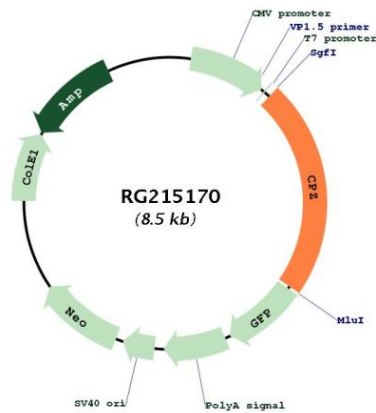
Cytogenetics: 4p16.1

Domains: FRI, Zn_carbOpept

Protein Families: Druggable Genome, Protease, Secreted Protein

Gene Summary: This gene encodes a member of the metallo-carboxypeptidase family. This enzyme displays carboxypeptidase activity towards substrates with basic C-terminal residues. It is most active at neutral pH and is inhibited by active site-directed inhibitors of metallo-carboxypeptidases. Alternative splicing in the coding region results in multiple transcript variants encoding different isoforms. [provided by RefSeq, Jul 2008]

Product images:



Circular map for RG215170