

## Product datasheet for **RG215166**

### ARHGEF5 (NM\_005435) Human Tagged ORF Clone

#### Product data:

Product Type:	Expression Plasmids
Product Name:	ARHGEF5 (NM_005435) Human Tagged ORF Clone
Tag:	TurboGFP
Symbol:	ARHGEF5
Synonyms:	GEF5; P60; TIM; TIM1
Mammalian Cell Selection:	Neomycin
Vector:	pCMV6-AC-GFP (PS100010)
E. coli Selection:	Ampicillin (100 ug/mL)
ORF Nucleotide Sequence:	>RG215166 representing NM_005435 Red=Cloning site Blue=ORF Green=Tags(s)

TTTTGTAATACGACTCACTATAGGGCGGCCGGAATTCGTCGACTGGATCCGGTACCGAGGAGATCTGCCGCC**CGATCGCC**

ATGGAGGCTGAGGAGGCCAGCGTGGAGCCTCTCCTCCCATCTCTGCCATAGAGGAATTCAGCATTATCCCTGAGGCTCCCATGAGGAGCAGCCAGGTCTCTGCCTTGGGGCTTGAAGCTCAAGAAGATGAGGACCCATCCTATAAGTGGAGAGGAAACACAGACTCTCAGCAACTCAGCAGAGTGAGTTAAGGGATGTGTGTGACTATGCGATTGAGACGATGCCCTCTTTCCCAAGGAAGGTTCTGCAGATGTGGAGCCCAATCAGGAAAGCCTGTGGCTGAGGCCTGTGACTCTCCGAACTGGGAGGCAGTACCCAGAGCCTAGCAGGCCACAAGCAAGGACTCTAGCTCCCCAGAGCTCTGGGCCTGCCCATTCAGAGTGAGCATCTAGACATGGCCCCATTTCCAGTGACCTGGGAAGCAAGAAGAGGAGGTGGAATTTGGCCAGGACTTACTTCTTTGACATTGGGATCTGGACAGGCAGAAGAAGAAGAGGAAACCTCTTCAGATAAECTTGGTCAGACCAGATATTATTCTCCCTGCGAAGAGCATCCTGCAGAGACCAACCAGAAATGAAGGCTCTGAAAGTGGGACTATCAGGCAGGGGGAAGAGCTGCCACCTGAGGAGCTGCAGGAAAGTCAAGGGCTCTTGCATCCCCAGGAGGTCCAAGTTCTGGAGGAGCAGGACAGCAGGAAGCAGGATTTCCGGGGGAAGGAAGTCTGAGGGAGGATGTTTGTGCCGATGGGCTATTAGGGAGGAACAGATGATAGAGCAGGTTAATGATGAAAAGGGAGAACAAGCAAAAACAGGAACAGGTACAAAGATGTGATGCTTGGGAGACAAGGAGAAAGAAATGGGGCTCACTGGGAGCCAGAGGCTCGAATGACGGTGTAGTGGGAGCAGGAGGATATGGAGAGGAAGGCTCAGGGTCCAGGGTCCAGAACAGGGAGAAGAGAGGAAAGGGAGCTGCAGGTGCCAGAAGAGAATAGGGCGGACTCTCAGGACGAAAAGAGTCAAACCTTTTTGGGAAATCAGAGGAAGTAACTGGAAAGCAAGAAGATCATGGTATAAAGGAGAAAGGGGTGCCAGTCAGCGGGCAGGAGGCGAAAGAGCCAGAGAGTTGGATGGGGCAGGCTGGGGCAGTGGGAAGAGCGAGGAGCAGGGAAGAGGAGAATGAGCATCATGGGCCTTCAATGCCCGCTCTGATAGCCCCTGAGGACTCTCCTCACTGTGACTGTCTTTCCAGGTGCCTCATATCTCATGACTCAGATTCCCGGACTCAGACAGAGTCCAGGGCTGAGGAACGTCCCCCGCAGCTCTGTCTCCCTCGCTAGAGCCATCAGGTGCTCTACCAGCCCATTTCTCTACTGGCTCCTTTTTGACTGAGGAGTCACCTGACAAGGAAATAGATCAAAAACAGCCAGCAAGAGGAATCCAGGCTG



[View online »](#)

AGGAAGGGAACAGTGTCCAGCCAAGGGACTGAGGTGGTCTTTGCCAGTGCATCTGTGACTCCTCCAAGGA  
CACCAGATTACAGCTCCTCCCAGTCTGTGTAAGCCTACCCCATCACACCTGCCTCGGTATCTGCCAGGCC  
CCCAGTTGCCCTTTCCAGGAGGGAAACCTTTGTGCTGCACGTGCTCCAGAACTGCCAGTGCCCTCTC  
TCAATGGATGACCCATCTCCCTGTGGGACTTCTGAGATGTGCCCGGTGCCCTCTATGGCTTCCCCTCCA  
CCGGGACCAGCCCTCCGAGGCCCCAGCCAACCTCCACAGGCACCTCCAGCACTTACGGAGTGACTCCTT  
CCCTGGTCTCACAGGACAGAGCAGACTCCAGACCTGGTGGGAATGTTGCTTTCTACTCCCAGCTCAGAG  
CTGGCCCCAGAGGCCCCAAACCTGCCATCTACAGCTCTGTGACCCCAAGAAGGGACAGAAGGAGTGTA  
GGGACTACAGCACCGTTTCAGCATCCCCTACTGCCTTATCCACGCTGAAGCAGGACTCTCAAGAATCCAT  
CTCAAATCTAGAGAGACCCAGCAGTCTCCAGCATCCAGCCCTGGGTCTCCCCACATAATCCAGCCTTT  
GCCACAGAGTCTCCCGCTACGGTCTTCCCCTCCTTTGTCTCCATGGAGGATGTGAGGATCCACGAAC  
CTCTGCCCTCCTCCCCACAGAGGAGGGACACCCATCCCTCCGTGGTGGAGACAGATGGCCATGCTCG  
TGTAGTGGTTCACGCTGAAGCAGCATAGCCACCCTCTCCATTGGCCCTAGGTTACAGGCTGCATGCC  
CCCCATAAAGGCCACTTCCCAAGCCTCTGACCCGCTGTGGCCAGGCAGCACCAGCTCTGCCATCTA  
CCCCAGACAGCTCCACCATGCTCAGGCCACCCAGGTGGAGATAACAAGCCGCTACCCCTACCCC  
TGATTTGCCGAGCCCCACCTTCTCCATTTCTGCTCCTGGTAGCTCAAGGATCTACAGGCCTCTACCC  
CCTACTACCATCATAGACCCTCCACCCGAACACCCCATTTGCCCCAAAGTCCAGGGGGAGGAGCAGGA  
GCACTCGGGGAGGACATATGAACTCAGGGGGTCAATGCCAAAACAAGACCTGCTTGTCAAGACTGGACAGT  
CCCCCTCCTGCCTCTGTGAGCAGCCTCCTGGCCCCGGCCACAGCTAGATCAACAGAGTCTTTCACT  
TCCACCAGCAGGAGTAAGAGCGAAGTGTCCCCTGGCATGGCTTTCAGCAACATGACAACTTCTATGCC  
CCTTTCCCCTACCACTCCCTGGACTCCGGAGCTCCAGGGACCCACCTTAAGGATGAAGCAGGGGTCTC  
AGAACCCTGAGGCCCTGCGAGAGAACCTTTGAGAAGGACAACCCCTCAGCAAGGAGCCAGTGGCCCA  
GGGAGTCACTGTGGGCAAGCAAGGCAGCCAGAAAAACCCAGCCATCTGCACCTGGAGAAGCCGTCCA  
GCTGGCCCCACAGCGGGACTCAGGGAGGCCACCAGGGGACAGCAGTGGACAGGCTGTGGCTCCTAGTGA  
GGGGGCCAACAGCACAAAGGCTGGAGCCGGCAGGGCCTGCGCAGACCTTCCATCTTGCCTGAGGGCTCT  
TCAGATCAAGAGGTCCAGCCGTGGAGAAAATCCGGGACCCTCAGACACTGTTGTTTTTCGGGAGAAAA  
AACCAAAGGAGGTGATGGGAGGCTTTTCAAGACGCTGCTCCAACTCATCAACTCCTCCCAGCTGCTTTA  
CCAGGAGTATAGTGATGTTGCTGAATAAGGAGATCCAGAGCCAGCAGCGGCTGGAGAGCTGTCCGAG  
ACACCCGGGCTAGCTCTCCGCGCAGCCTCGGAAGGCCCTGGTCTCCTCCGAGTGTACCTGCAGCGGC  
TCTCATGGCCTCCAGCGCTCCTCTGGCAGGAAATCCCGTGGTGGCAACAGCACCCTGCTGCTCTC  
CATGACCCATGAAGACAAAAGCTGCAAGAGGTCAAATTTGAGCTGATTGTGTGAGAGCCCTCTACCTG  
CGCAGTCTAAACATAGCTGTGGATCATTCCAACCTTCAACTTCACTCCGGGCCACACTTCCAACCAGG  
AGCACCATGGCTCTTCTCTCGTTTACAGGATGTGCGAGACGTACAGCGCCACGTTCTTTTCAAGCCTGGA  
AGAGAACCTTTGAGAACAATATCTTCTCCTTCCAAGTATGTGACGTAGTCTGAACCACGCCCCAGACTTC  
CGCCGGGTCTACCTGCCTTATGTACCAACCAGACCTATCAGGAACGCACCTTCCAGAGCCTGATGAATA  
GCAACAGCAATTTCCGGGAGGTCTTGGAGAAGCTGGAGAGCGACCCCGTCTGCCAGCGCCTTTCCCTCAA  
GTCCTTTCTGATTCTGCCTTCCAACGCATCACCCGCCTCAAACCTGCTGCTCCAGAACATTTGAAGAGA  
ACACAGCCTGGCTCCTCGGAGGAGGCAGAGGCCACGAAGGCACACCACGCCCTGGAGCAGCTGATCCGGG  
ACTGCAATAACAATGTCCAGAGTATGCGACGGACAGAGGAACTAATCTACCTGAGCCAGAAGATTGAGTT  
TGAGTGCAAAAATATCCCGCTCATTTCTCAGTCACGCTGGTGGTGAAGGAGTGGGAGCTGACAGCCTTG  
GAGTTCAAGTCTTCCCAGGGCTACGAAGGAAGCTGAACACGCGTCCAGTCCACCTGCACCTCTTCAATG  
ACTGTCTGCTGCTGCTCGGCCCGAGAGGATAGCCGATTCTGGTATTTGACCATGCTCCCTTCTCCTC  
CATTCCGGGGGAAAAGTGTGAAATGAAGCTACATGGACCTCACAAAAACCTGTTCCGACTCTTTCTGCGG  
CAGAACACTCAGGGCGCCAGGCCGAGTTCCTTCTCCGACGGAGACTCAAAGTGAAGGCTTCCGTGGA  
TCTCAGCCTTGGCCATGCCAAGAGAGGAGTTGGACCTTCTGGAGTGTACAACCTCCCCCAGGTACAGTG  
CCTTCGAGCCTACAAGCCCCGAGAGAATGATGAATTGGCACTGGAGAAAGCCGACGTGGTGTGAGT  
CAGCAGAGCAGTGACGGCTGGCTGGAGGGCTGAGGCTCTCAGACGGGGAGCGAGGCTGGTTTCTGTGC  
AGCAGGTGGAGTTCATTTCCAACCCAGAGTCCGTGCACAGAACCTGAAGGAAGCTCATCGAGTCAAGAC  
TGCCAAACTACAGCTGGTGGAAACAGCAAGCC

AGCGGACCGACGCGTACGCGGCCGCTCGAG - GFP Tag - GTTTAA

**Protein Sequence:** >RG215166 representing NM\_005435  
 Red=Cloning site Green=Tags(s)

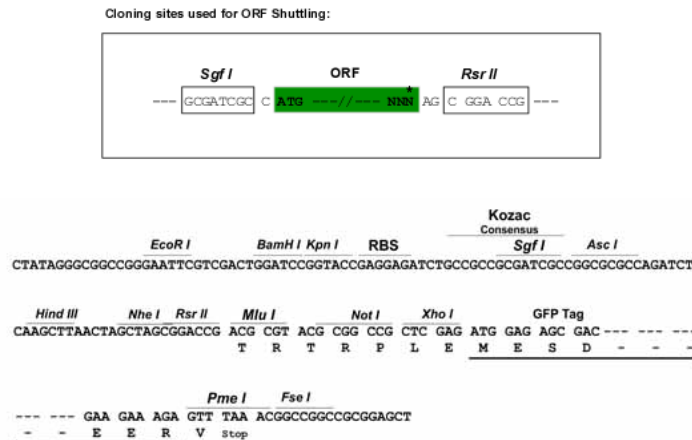
```

MEAEAAQRGASPPISAIIEEFIIPEAPMRSSQVSALGLEAQEDEDPSYKWREHRLSATQQSELRDVCDY
AIETMPSFPKEGSADVEPNQESLVAEACDTPHWEAVPQSLAGRQARTLAPPELWACPIQSEHLDMAFFS
SDLGSEEEVEFWPGLTSLTLGSGQAEIEEETSSDMSGQTRYYSPCEEHPAETNQNQEGSESGTIRQGEEL
PPEELQESQGLLHPQEVQVLEEQGQQAEGFRGEGTLREDVCADGLLGEEQMIQVNDKGEQKQKQEQVQ
DVMLGRQGERMGLTGEPEGLNDGEWEQEDMERKAQGGGPEQGEERKRELQVPEENRADSQDEKSQTFLG
KSEEVTKQEDHGIKEKGVPSVSGQEAKEPESWDGGRLGAVGRARSREENEHHGSPMPAL IAPEDSPHCD
LFPGASYLMTQIPGTQTESRAEELSPAALSPSLEPIRCSHQPI SLLGSFLTEESPDKEIDQNSQQEESRL
RKGTVSSQGTEVVFASASVTPRTPDSAPPSPAEAYIPASVSARPPVAFPRRETS CAARAPETASAPL
SMDDPSPCGTSEMCPAALYGFSTGTSPRPPANSTGTVQHLRSDSFPGSHRTEQTPDLVGM LLSYSHSE
LPQRPPKPAIYSSVTPRRDRRSGRDYSTVSASPTALSTLKQDSQESI SNLERPSSPPSIQPWVSPHNPAF
ATESPAYGSSPSFVSMEDVRIHEPLPPPPPQRDTHPSVVETDGHARVVVPTLQKHSHPPLALGSLHA
PHKGPLPQASDPAVARQHRPLPSTPDSSSHAQATPRWRYNKPLPPTPDLPQPHLPPI SAPGSSRIYRPLP
PLPIIDPTEPPPLPPKSRGRSRSTRGGHMNSGGHAKTRPACQDWTVPLPASAGRTSWPPATARSTESFT
STRSRKSEVSPGMAFSNMTNFLCPSSPTTPWTPPELQGPTSKDEAGVSEHPEAPAREPLRRTTPQQGASGP
GRSPVQGARQPEKPSHLHLEKASSWPHRRDSGRPPGDSSGQAVAPSEGANKHKGWSRQGLRRPSILPEGS
SDSRGPAVEKHGPGSDTVVFREKKPKVEMGGFSRRCSKL INSSQLLYQEYSDVVLNKEIQSQQRLESLS
TPGPSSPRQPRKALVSSESYLQRLSMASGSLWQEI PVVRNSTVLLSMTHEDQKLQEVKFE LIVSEASYL
RSLNIAVDHFQLSTSLRATLSNQEHQWLF SRLQDVRDVSATFLSDLEENFENNIFSFQVCDVVLNHAPDF
RRVYLPYVTNQTYQERTFQSLMNSNSNFREVLEKLESDPVCQRLSLKSFLLP FQRITRLKLLQLNILKR
TQPGSSEEAETKAHHALEQLIRDCNNNVQSMRRT EELIYLSQKIEFECKIFPLISQSRWLKSGELTAL
EFSASPLGRRKLNTRPVHLHLFNDCLLLSRPREGSRFLVFDHAPFSSIRGEKCEMKLHGPHKNLFR LFLR
QNTQGAQAEFLFR TETQSEKLRWISALAMPREELDLLECYNSPVQVCLRAYKPRENDELALEKADVVMVT
QQSSDGWLEGVRLSDGERGWFPVQVVEFISNPEVRAQNLKEAHRVKTAKLQLVEQQA
  
```

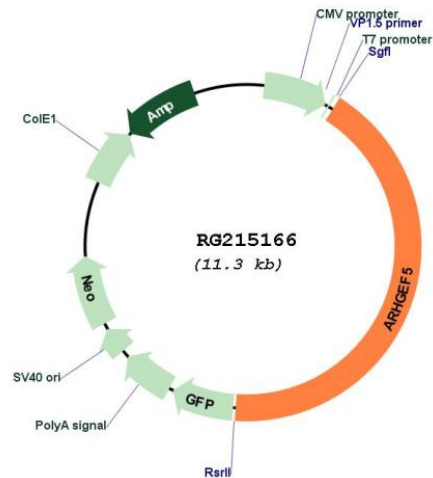
SGPTRRRLE - GFP Tag - V

**Restriction Sites:** SgfI-RsrII

**Cloning Scheme:**



## Plasmid Map:



ACCN: NM\_005435

ORF Size: 4791 bp

**OTI Disclaimer:** The molecular sequence of this clone aligns with the gene accession number as a point of reference only. However, individual transcript sequences of the same gene can differ through naturally occurring variations (e.g. polymorphisms), each with its own valid existence. This clone is substantially in agreement with the reference, but a complete review of all prevailing variants is recommended prior to use. [More info](#)

**OTI Annotation:** This clone was engineered to express the complete ORF with an expression tag. Expression varies depending on the nature of the gene.

**Components:** The ORF clone is ion-exchange column purified and shipped in a 2D barcoded Matrix tube containing 10ug of transfection-ready, dried plasmid DNA (reconstitute with 100 ul of water).

**Reconstitution Method:**

1. Centrifuge at 5,000xg for 5min.
2. Carefully open the tube and add 100ul of sterile water to dissolve the DNA.
3. Close the tube and incubate for 10 minutes at room temperature.
4. Briefly vortex the tube and then do a quick spin (less than 5000xg) to concentrate the liquid at the bottom.
5. Store the suspended plasmid at -20°C. The DNA is stable for at least one year from date of shipping when stored at -20°C.

RefSeq: [NM\\_005435.4](#)

RefSeq Size:	5505 bp
RefSeq ORF:	4794 bp
Locus ID:	7984
UniProt ID:	<a href="#">Q12774</a>
Cytogenetics:	7q35
Domains:	RhoGEF, SH3, PH
Protein Families:	Druggable Genome
Gene Summary:	Rho GTPases play a fundamental role in numerous cellular processes initiated by extracellular stimuli that work through G protein coupled receptors. The encoded protein may form a complex with G proteins and stimulate Rho-dependent signals. This protein may be involved in the control of cytoskeletal organization. [provided by RefSeq, Jul 2008]