

Product datasheet for **RG215146**

APBA1 (NM_001163) Human Tagged ORF Clone

Product data:

Product Type:	Expression Plasmids
Product Name:	APBA1 (NM_001163) Human Tagged ORF Clone
Tag:	TurboGFP
Symbol:	APBA1
Synonyms:	D9S411E; LIN10; MINT1; X11; X11A; X11ALPHA
Mammalian Cell Selection:	Neomycin
Vector:	pCMV6-AC-GFP (PS100010)
E. coli Selection:	Ampicillin (100 ug/mL)



[View online »](#)

ORF Nucleotide Sequence:

>RG215146 representing NM_001163
 Red=Cloning site Blue=ORF Green=Tags(s)

TTTTGTAATACGACTCACTATAGGGCGGCCGGAATTCGTCGACTGGATCCGGTACCGAGGAGATCTGCC
 GCC**CGGATCGCC**

ATGAACCACTTGGAGGGTCTGCGGAGGTGGAGGTGACCGACGAGCGGCAGGTGGGAGGTGAACGAGT
 CGGTGGAGGCCGACCTGGAGCACCCGAGGTGGAAGAGGAACAGCAGCAGCCGCCGAGCAGCAGCTA
 TGTGGGCCCGCACACGCGCGGGCAGCCCTCGAGGACCTCCGCGCCAGCTCGGCCAGGAGGAAGAGGAG
 CGCGGGGAATGCCTGGCGGCTCAGCCAGCAGGAGAGCGGCTTCCACAACCACACGGACACCGCCGAGG
 GCGACGTGATCGCCGCGGCCCGCAGCGCTACGATGCGGAGCGCGCAGGACCCGAGGACGAGAGCGC
 CTATGCTGTGCAGTACCGGCCGAGGCCGAGGAGTACACGGAGCAGGCAGAGGCCGAGCAGCCGAGGCC
 ACGCACCCCGCGCGCTGCCAACCACCTGCACCTCCACTCGCTGGAGCAGGGAAGCCATGAATGCGG
 CCTACTCAGGCTACGCTACACGCACCGGCTCTCCACCGCGGTGAGGACGAGCCCTACTCCGAGCCCTA
 TGCCGACTACGGCGCCCTCCAGGAGCACGTGTACGAGGAGATAGGGGACGCGCCCGAGCTGGACGCACGC
 GACGGCTGCGGCTCTACGAGCAGGAGCGCAGAGGCGGCCGCTACCGCCAGGAGGCCCTGGGCGCGC
 GGCTGCACCATTACGACGAGCGCTCCGACGCGGAGTCCGACAGCCCGAGAAGGAGGCCGAGTTCGCGCC
 CTACCCGCGCATGGACAGCTACGAGCAGGAGGAGGACATCGACCAGATAGTGGCCGAGGTGAAGCAGAGC
 ATGAGCTCGCAGAGCCTCGACAAGGCAGCCGAGGACATGCCTGAGGCCGAGCAGGACCTGGAGCGTCCCC
 CTACCCCGGGCGGGGGTGCAGCCGACAGCCCGGGCTGCAGGCGCCGGCGGGGCAGCAGCGGGCGGTGGG
 CCCCAGGGCGGGCGGAGGCGGGGCAGCGGTACAGCAAGGAGAAGCGCGATGCCATCTCGCTGGCCATC
 AAGGACATCAAGGAGGCCATCGAGGAGGTGAAAACCAGGACCATCCGTTTCGCTTACACCCCGACGAGC
 CCAAAGAGCCCATCTGGGTCATGCGCCAGGACATTAGCCCCACAGGACTGTGACACCAGAGCCGAT
 GGACGGAGATTCTCCGTCTCCTGGCAGTCTCCCCCTTGGGTGCAGAGTCATCAAGCACATCTCTTCAC
 CCCAGTGACCCTGTGGAAGCGTCCACTAATAAAGAGTCAAGAAAAGCTTGGCTTATTCCCAACCTACG
 TTGAAGTTCGGGACCCTGCGACCCGAAGACTTGATCGATGGAATCATTTTTGCCGCAATTACCTTGG
 CTCCACTCAGTCTCTCAGACAAAACCTTCCAAAACGTGCGCATGATGCAGGCCAGGAAAGCCGTA
 AGCAGGATCAAGATGGCCAGAAATTAGCCAAAAGCAGGAAGAAGGCTCCTGAAGGCGAATCTCAGCCAA
 TGACTGAAGTGGATCTCTTATTCTACCCAGAGAATCAAAGTGTGAACGCCGACACACAGGAGACAAT
 GATGGACCACCCTCTGAGGACCATTTCTACATTGCGGACATTGGGAACATCGTTGTGCTGATGGCCCGC
 CGGCGGATGCCTCGTCCAACCTCCAGGAGAACGTGGAAGCGTCCACCCATCCAGGATGGGAAAAGGC
 AGTACAAGATGATCTGCCACGTCTCGAGTCTGAGGATGCTCAGCTGATTGCACAGTCCATCGGACAGGC
 ATTTAGCGTGGCATAACCAGGAATTCCTCAGGGCAATGGGATTAACCCCGAAGATCTCAGCCAGAAGGAG
 TATAGTGACCTGCTCAATACCCAGGACATGTACAACGATGACCTGATCCACTTCTCCAAGTCGGAAAAC
 GTAAGATGTTTTCATAGAGAAGCAGAAAGGAGAAATCCTAGGTGTGGTATTGTGGAGTCTGGCTGGGG
 ATCCATCCTCCCCACCGTATCATTGCCAACATGATGCATGGTGGCCCTGCGGAGAAATCTGGGAAGCTG
 AATATCGGTGACCAGATCATGTCCATTAATGGCACCAGCTGGTGGCCCTGCCTCTGTCCACCTGCCAGA
 GCATTATTAAGGGCTTAAGAATCAGTCCCGAGTCAAGCTGAATATCGTGAGATGTCTCCGCTGACCCAC
 CGTGTTAATCAGAAGACCAGACCTTCGCTACCAGCTCGTTCAGCGTCCAGAATGGAATTATCTGCAGC
 CTCATGCGAGGGGAATAGCTGAGAGAGGAGCGTCCGTGTGGGCACCGGATCATTGAAATCAATGGAC
 AGAGCGTCTGGCCACCCCCACGAGAAGATCGTCCACATTCTCTCAATGCTGTTGGGGAGATTATAT
 GAAGACAATGCCAGCCGCGATGTACAGGCTGCTGACGGCCAGGAGCAGCCTGTTTACATC

ACCGTACGCGGCCGCTCGAG - GFP Tag - GTTTAA

Protein Sequence: >RG215146 representing NM_001163
 Red=Cloning site Green=Tags(s)

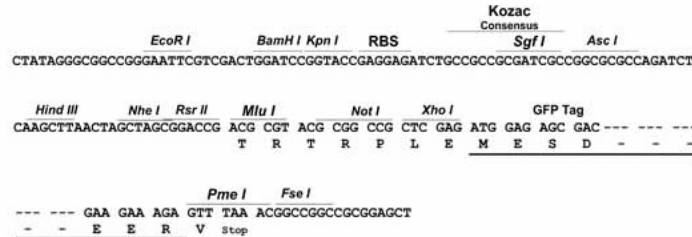
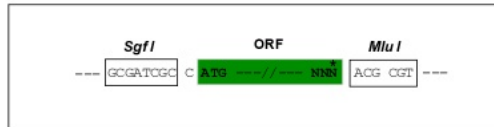
MNHLEGSAEVEVTDEAAGGEVNESVEADLEHPEVEEEQQQPPQQHYVGRHQGRALEDLRAQLGQEEEE
 RGECLARSASTESGFHNHTDTAEGDVIAAARDGYDAERAQDPEDESAYAVQYRPEAEETEQAEEHAEA
 THRRALPNHLHFHSLHEHEAMNAAYSGYVYTHRLFHRGEDEPYSEPYADYGGLEHVYEEIGDAPELDAR
 DGLRLYEQERDEAAAYRQEALGARLHHYDERSDGE SDSPEKEAEFAPYPRMDSYEQEEDIDQIVAEVKQS
 MSSQSLDKAAEDMPEAEQDLERPPTPAGGRPDS PGLQAPAGQQRAVGPAGGGEAGQRYSKERDAISLAI
 KDIKEAIEEVKTRTIRSPYTPDEPKPIWVMRQDISPTRDCDDQRPMDG DSPSGSSSPLGAESSSTSLH
 PSDPVEASTNKESRSLASFPTYVEVPGPCDPEDLIDGIIFAANYLGSTQLLSDKTPSKNVRMMQAQEAV
 SRIKMAQKLAKSRKKAPEGESQPMTEVDLFI STQRIKVLNADTQETMMDHPLRTISYIADIGNIVLMAR
 RRMPRSNSQENVEASHPSQDGKRQYKMICHVFESEDAQLIAQSIGQAFSVAYQEF LRANGINPEDLSQKE
 YSDLLNTQDMYNDL IHFSKSENCKDVFIEKQKGEILGVVIVESGWSILPTVIIANMMHGGAEKSGKL
 NIGDQIMSINGTSLVGLPLSTCQSIIKGLKNQSRVKLNI VRCPPVTTVLIRRPDLRYQLGFSVQNGIICS
 LMRGGIAERGGVRVGHRIEINGQSVVATPHEKIVHILSNAVGEIHMKTMPAAMYRLLTAQE QPVYI

TRTRPLE - GFP Tag - V

Restriction Sites: Sgfl-MluI

Cloning Scheme:

Cloning sites used for ORF Shutting:



- ACCN:** NM_001163
- ORF Size:** 2511 bp
- OTI Disclaimer:** The molecular sequence of this clone aligns with the gene accession number as a point of reference only. However, individual transcript sequences of the same gene can differ through naturally occurring variations (e.g. polymorphisms), each with its own valid existence. This clone is substantially in agreement with the reference, but a complete review of all prevailing variants is recommended prior to use. [More info](#)
- OTI Annotation:** This clone was engineered to express the complete ORF with an expression tag. Expression varies depending on the nature of the gene.
- Components:** The ORF clone is ion-exchange column purified and shipped in a 2D barcoded Matrix tube containing 10ug of transfection-ready, dried plasmid DNA (reconstitute with 100 ul of water).

Reconstitution Method:

1. Centrifuge at 5,000xg for 5min.
2. Carefully open the tube and add 100ul of sterile water to dissolve the DNA.
3. Close the tube and incubate for 10 minutes at room temperature.
4. Briefly vortex the tube and then do a quick spin (less than 5000xg) to concentrate the liquid at the bottom.
5. Store the suspended plasmid at -20°C. The DNA is stable for at least one year from date of shipping when stored at -20°C.

RefSeq: [NM_001163.4](#)

RefSeq Size: 6603 bp

RefSeq ORF: 2514 bp

Locus ID: 320

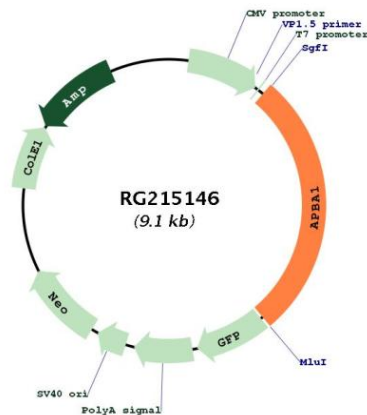
UniProt ID: [Q02410](#)

Cytogenetics: 9q21.12

Domains: PDZ, PID

Gene Summary: The protein encoded by this gene is a member of the X11 protein family. It is a neuronal adapter protein that interacts with the Alzheimer's disease amyloid precursor protein (APP). It stabilizes APP and inhibits production of proteolytic APP fragments including the A beta peptide that is deposited in the brains of Alzheimer's disease patients. This gene product is believed to be involved in signal transduction processes. It is also regarded as a putative vesicular trafficking protein in the brain that can form a complex with the potential to couple synaptic vesicle exocytosis to neuronal cell adhesion. [provided by RefSeq, Jul 2008]

Product images:



Circular map for RG215146