

Product datasheet for **RG215142**

TEPP (NM_199046) Human Tagged ORF Clone

Product data:

Product Type: Expression Plasmids
 Product Name: TEPP (NM_199046) Human Tagged ORF Clone
 Tag: TurboGFP
 Symbol: TEPP
 Mammalian Cell Selection: Neomycin
 Vector: pCMV6-AC-GFP (PS100010)
 E. coli Selection: Ampicillin (100 ug/mL)
 ORF Nucleotide Sequence: >RG215142 representing NM_199046
 Red=Cloning site Blue=ORF Green=Tags(s)

TTTTGTAATACGACTCACTATAGGGCGGCCGGAATTCGTCGACTGGATCCGGTACCGAGGAGATCTGCC
 GCC**CGATCGCC**

ATGGGCATTGTCTGTGCACAATGTTCTTTATTCTGCTGCTGTCCATAATAAGGGCTCGTCCACCTCCCT
 TCCTCTTCTGCCATTGAGCAGTCAAAGAAGTAAAGTCTTATAAGCCTGTGCACCTGGGCCTGGGCC
 TACAGATAAGGTAGCTGCTATTGCTATGGCCCGCATATTGACCTGGTGCCTGGGACGATGGCTCCACA
 CATGTGTATGCCCTCCCGGCCATCCTGCTTCCATGGAGCGGCAGCGCAACCAGCTGGCGGCCTGAAGC
 AGCAGCTCTACCACCCAGCCCTGCCACCCTGCGCCACATGGACAGGGACACCGTCAAGGCCTGCCTTCC
 TGATGAGCACTGCCAGTCCACCACCTACTGCCGAAAGATGAATTTGACAACGCCATTTTACACTCCTT
 GGGGTCCCAACAACCCCTGCAGTGTTTGGACATCACCGCCACAGGCCAGAAGCTTCGCAACAGGTACC
 ACGAGGAAAAGCTGGCGCCATCGCGCCAGGCATCAACCGAGTGGACTGGCCCTGCTTACGCGCGCCAT
 CGAGGACTGGTCCCACTTCGTGCTCCTCGGCCGGGAGTTCAAGCTGCCTTGCCTGAGGAAGCGAGCGGAG
 GGTCTCAGCGGCTACGCGGTGCGGTAAGTGAAGCCGACGTGACCCAGACCTGGCGGCAGGAAGCCCTGT
 GTGGGGCGTGGGCAGGGCGTCCGTGCTCCCCGACTACCGCGCCCTATCCCTGCTGCCCGCTCAGTA
 CTGCCTCAACCAGAACCAGCCTGGACCCTACGGACAGAAGCCCTGCCTTTCGACTCCCTGAACACT
 TTCGAAGCTTCGGCTCCAGCTACAGCTGCTCAACTACCTGACCCCTGGCAT

ACGCGTACGCGGCCGCTCGAG - GFP Tag - GTTTAA



[View online »](#)

Protein Sequence: >RG215142 representing NM_199046
Red=Cloning site Green=Tags(s)

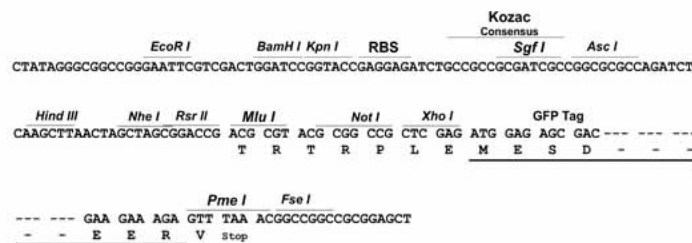
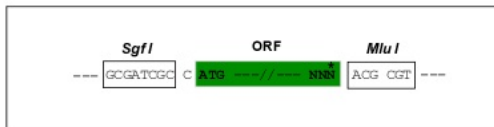
MGIVCAQCSFILLLSIIRARPPPFLLFCPLSSQRTESPYKPVHLGLGPTDKVAAMARIIDLVPWDDGST
 HVYASPAILLPMERQRNQLAGVKQQLYHPALPTLRHMDRDTPVKAACLPDEHCQSTTYCRKDEFDHAHFTLL
 GVPNKPLQCLDITATGQKLRNRYHEGKLAPIAPGINRVDWPCFTRAIEDWSHFVSSAGEFKLPCLRKRAE
 GLSGYAVRYLKPVDVTQTRQREALCGAWAGRPCSPDSPRPYPCCPPQYCLNQNPPLDRYGQKPLPFDSLNT
 FRSFSSYSRVNYLTPWH

TRTRPLE - GFP Tag - V

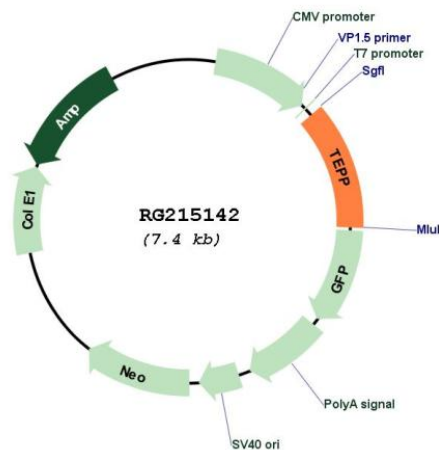
Restriction Sites: SgfI-MluI

Cloning Scheme:

Cloning sites used for ORF Shutting:



Plasmid Map:



ACCN: NM_199046

ORF Size: 894 bp

OTI Disclaimer:	The molecular sequence of this clone aligns with the gene accession number as a point of reference only. However, individual transcript sequences of the same gene can differ through naturally occurring variations (e.g. polymorphisms), each with its own valid existence. This clone is substantially in agreement with the reference, but a complete review of all prevailing variants is recommended prior to use. More info
OTI Annotation:	This clone was engineered to express the complete ORF with an expression tag. Expression varies depending on the nature of the gene.
Components:	The ORF clone is ion-exchange column purified and shipped in a 2D barcoded Matrix tube containing 10ug of transfection-ready, dried plasmid DNA (reconstitute with 100 ul of water).
Reconstitution Method:	<ol style="list-style-type: none">1. Centrifuge at 5,000xg for 5min.2. Carefully open the tube and add 100ul of sterile water to dissolve the DNA.3. Close the tube and incubate for 10 minutes at room temperature.4. Briefly vortex the tube and then do a quick spin (less than 5000xg) to concentrate the liquid at the bottom.5. Store the suspended plasmid at -20°C. The DNA is stable for at least one year from date of shipping when stored at -20°C.
RefSeq:	NM_199046.1 , NP_950247.1
RefSeq Size:	956 bp
RefSeq ORF:	732 bp
Locus ID:	374739
UniProt ID:	Q6URK8
Cytogenetics:	16q21