

Product datasheet for **RG215124**

NuMA (NUMA1) (NM_006185) Human Tagged ORF Clone

Product data:

Product Type:	Expression Plasmids
Product Name:	NuMA (NUMA1) (NM_006185) Human Tagged ORF Clone
Tag:	TurboGFP
Symbol:	NUMA1
Synonyms:	NMP-22; NUMA
Mammalian Cell Selection:	Neomycin
Vector:	pCMV6-AC-GFP (PS100010)
E. coli Selection:	Ampicillin (100 ug/mL)
ORF Nucleotide Sequence:	>RG215124 representing NM_006185 Red=Cloning site Blue=ORF Green=Tags(s)

TTTTGTAATACGACTCACTATAGGGCGGCCGGAATTCGTCGACTGGATCCGGTACCGAGGAGATCTGCC
GCC**CGATCGCC**

ATGACACTCCACGCCACCCGGGGGGTGCCTCTCTTGGGTGAACAGTCTACACGTGGCTGACCCTG
TGGAGGCTGTGCTGCAGCTCCAGGACTGCAGCATCTTCATCAAGATCATTGACAGAATCCATGGCACTGA
AGAGGGACAGCAAATCTGAAGCAGCCGGTGTGAGAGAGACTGGACTTTGTGTGCAGTTTCTGCAGAAA
AATCGAAAACATCCCTCTCCCCAGAATGCCTGGTATCTGCACAGAAGGTGCTAGAGGGATCAGAGCTGG
AACTGGCGAAGATGACCATGCTGCTCTTATACCACTCTACCATGAGCTCCAAAAGTCCCAGGACTGGGA
ACAGTTTGAATATAAAATTCAGGCTGAGTTGGCTGTCATTCTTAAATTTGTGCTGGACCATGAGGACGGG
CTAAACCTTAATGAGGACCTAGAGAAGTTCCTACAGAAAGCTCCTGTGCCTTCTACCTGTCTAGACAT
TCCCTGAAGAGCTCTCCACCTAGCCACCAGGCCAAGAGGGAGATTCGCTTCTAGAGCTACAGAAGGT
TGCTCTCTTCCAGTGGGAACAACCTTCTCAGGTTCTCCAGTCTCCCATGGGTGATATCCTGCGAG
ACCCACAGTTCCAGATGAGACGGCTGAAGAAGCAGCTTGCTGATGAGAGAAGTAATAGGGATGAGCTGG
AGCTGGAGCTAGCTGAGAACCGCAAGCTCCTCACCGAGAAGGATGCACAGATAGCCATGATGCAGCAGCG
CATTGACCGCTAGCCCTGCTGAATGAGAAGCAGCGGCCAGCCCACTGGAGCCCAAGGAGCTTGAGGAG
CTGCGTGACAAGAATGAGAGCCTTACCATGCGGCTGCATGAAACCTGAAGCAGTCCAGGACTGAAGA
CAGAGAAGAGCCAGATGGATCGCAAAATCAACCAGCTTTCGGAGGAGAATGGAGACCTTTCTTTAAGCT
GCGGGAGTTTGCCAGTCTCTGCAGCAGCTACAGGATGCCCTCAATGAGCTGACGGAGGACACAGCAAG
GCCACTCAGGAGTGGCTAGAGAAGCAGGCCAGCTGGAGAAGGAGCTCAGCGCAGCCCTGCAGGACAAGA
AATGCCTTGAAGAGAAGAACGAAATCCTCAGGGAAAACCTTTCACAGCTGGAAGAACAACCTTGTCCCAGCT
GCAGGATAACCCACCCAGGAGAAGGGCGAGGTGCTGGGTGATGTCTTGCAGCTGGAACCTTGAAGCAA
GAGGCAGCCACTTGTGCAACAACACACAGCTCCAAGCCAGGGTAGAGATGCTGGAGACTGAGCGAG
GCCAGCAGGAAGCAAGCTGCTTGTGAGCGGGCCACTTCGAAGAAGAAAAGCAGCAGCTGTCTAGCCT
GATCACTGACCTGCAGAGCTCCATCTCAACCTCAGCCAGGCCAAGGAAGAGCTGGAGCAGGCCCTCCAG



[View online »](#)

GCTCATGGGGCCCGTTGACTGCCAGGTGGCCTCTCTGACCTCTGAGCTCACCACACTCAATGCCACCA
TCCAGCAACAGGATCAAGAACTGGCTGGCCTGAAGCAGCAGGCCAAAGAGAAGCAGGCCAGCTAGCACA
GACCTCCAACAGCAAGAACAGGCCTCCAGGGCTCCGCCACCAGGTGGAGCAGCTAAGCAGTAGCCTG
AAGCAGAAGGAGCAGCAGTTGAAGGAGGTAGCGGAGAAGCAGGAGGCAACTAGGCAGGACCATGCCAGC
AACTGGCCACTGCTGCAGAGGAGCGAGAGGCCTCCTTAAGGGAGCGGGATGCGGCTCTCAAGCAGCTGGA
GGCACTGGAGAAGGAGAAGGCTGCCAAGCTGGAGATTCTGCAGCAGCAACTTCAGGTGGCTAATGAAGCC
CGGGACAGTGGCCAGACCTCAGTGACACAGGCCAGCGGAGAAGGCAGAGCTGAGCCGGAAGGTGGAGG
AACTCCAGGCCTGTGTTGAGACAGCCCGCAGGAACAGCATGAGGCCAGGCCAGGTTGCAGAGCTAGA
GTTGCAGCTGCGGTCTGAGCAGCAAAAAGCAACTGAGAAAAGAAAGGGTGGCCAGGAGAAGGACCAGCTC
CAGGAGCAGCTCCAGGCCTCAAAGAGTCTTGAAGGTACCAAGGGCAGCCTTGAAGAGGAGAAGCGCA
GGGCTGCAGATGCCCTGGAAGAGCAGCAGCGTTGTATCTCTGAGCTGAAGGCAGAGACCCGAAGCCTGGT
GGAGCAGCATAAGCGGGAACGAAAGGAGCTGGAAGAAGAGAGGGCTGGCGCAAGGGCTGGAGGCTCGA
TTACAGCAGCTTGGGGAGGCCATCAGGCTGAGACTGAAGTCTGCGCGGGAGCTGGCAGAGGCCATGG
CTGCCAGCACACAGCTGAGAGTGAGTGTGAGCAGCTCGTCAAAGAAGTAGCTGCCTGGCGTGAGCGGTA
TGAGGATAGCCAGCAAGAGGAGGCACAGTATGGCGCCATGTTCCAGGAACAGCTGATGACTTTGAAGGAG
GAATGTGAGAAGGCCCGCAGGAGCTGCAGGAGGCAAAGGAGAAGGTGGCAGGCATAGAATCCCACAGCG
AGCTCCAGATAAGCCGGCAGCAGAACGAACTAGCTGAGCTCCATGCCAACCTGGCCAGAGCACTCCAGCA
GGTCCAAGAGAAGGAAGTCAGGGCCAGAAGCTTGCAGATGACCTCTCCACTCTGCAGGAAAAGATGGCT
GCCACCAGCAAAGAGGTGGCCCGCTTGGAGACCTTGGTGCGAAGGCAGGTGAGCAGCAGGAAACAGCCT
CCCGGGAGTTAGTCAAGGAGCCTGCGAGGGCAGGAGACAGACAGCCCGAGTGGCTGGAAGAGCAACAGGG
ACGCCAGTTCTGCAGCACACAGGCAGCCTGCAGGCTATGGAGCGGGAGGCAGAGCAGATGGGCAATGAG
CTGGAACGGCTGCGGGCCGCGCTGATGGAGAGCCAGGGCAGCAGCAGGAGGAGCGTGGGAGCAGGAAA
GGAGGTTGGCGGGCTGACCCAGGAGCGGGCCGTGCCAGGCTGACCTTGCCCTGGAGAAGGGCCAG
AGCAGAGCTTGAGATGCGGCTGCAGAACGCCCTAACGAGCAGCGTGTGGAGTTCCTACCTGCAAGAG
GCACTGGCTCATGCCCTGACGAAAAGGAAGGCAAGGACCAGGAGTTGGCCAAGCTTCGTGGTCTGGAGG
CAGCCCAGATAAAAAGAGCTGGAGGAACTTCGGCAAACCTGAAGCAACTGAAGGAACAGCTGGCTAAGAA
AGAAAAGGAGCACGCATCTGGCTCAGGAGCCCAATCTGAGGCTGCTGGCAGGACAGAGCCAAACAGGCCCC
AAGCTGGAGGCACTGCGGGCAGAGGTGAGCAAGCTGGAACAGCAATGCCAGAAGCAGCAGGAGCAGGCTG
ACAGCCTGGAACGCAGCCTCGAGGCTGAGCGGGCCTCCCGGGCTGAGCGGGACAGTGCTCTGGAGACTCT
GCAGGGCCAGTTAGAGGAGAAGGCCAGGAGCTAGGGCACAGTCAAGTGCCTTAGCCTCGGCCCCAACGG
GAGTTGGCTGCCTTCCGCACCAAGGTACAAGACCACAGCAAGGCTGAAGATGAGTGAAGGCCAGGTGG
CCCGGGCCGGCAAGAGGCTGAGAGGAAAAATAGCCTCATCAGCAGCTTGAGAGGAGGAGGTGCCATCCT
GAATCGCCAGGTCTGGAGAAGGAGGGGAGAGCAAGGAGTTGAAGCGGCTGGTGTGGCCGAGTCAGAG
AAGAGCCAGAAGCTGGAGGAGAGGCTGCGCCTGCTGCAGGCAGAGACAGCCAGCAACAGTCCAGAGCTG
CAGAACGCAGCTCTGCTCTGCGGGAGGAGGTGCAGAGCCTCCGGGAGGAGGCTGAGAAAACAGCGGTGGC
TTCAGAGAACCTGCGGCAGGAGCTGACCTCACAGGCTGAGCGTGCAGGAGGAGTGGGCCAAGAATTGAAG
GCGTGGCAGGAGAAGTCTTCCAGAAAGAGCAGGCCCTCTCCACCCTGCAGCTCGAGCACACCAGCACAC
AGGCCCTGGTGTGAGTGTGCTGCCAGCTAAGCACCTCTGCCAGCAGCTGCAGGCCGAGCAGGCCGCTGC
CGAGAAACGCCACCGTGAGGAGCTGGAGCAGCAAGCAGGCCGCTGGGGGACTGCGGGCAGAGCTGCTG
CGGGCCAGCGGGAGCTTGGGGAGCTGATTCCTCTGCGGCAGAAGGTGGCAGAGCAGGAGCGAACAGCTC
AGCAGCTGCGGGCAGAGAAGGCCAGCTATGCAGAGCAGCTGAGCATGCTGAAGAAGGCGCATGGCCTGCT
GGCAGAGGAGAACCAGGGGCTGGGTGAGCGGGCCAACTTGGCCGCGAGTTTCTGGAAGTGGAGTTGGAC
CAGGCCCGGGAGAAGTATGTCCAAGAGTTGGCAGCCGTACGTGCTGATGCTGAGACCCGCTGGCTGAGG
TGCAGCGAGAAGCACAGAGCACTGCCGGGAGCTGGAGGTGATGACTGCCAAGTATGAGGGTGCCAAGGT
CAAGGTCTGGAGGAGAGGCAGCGGTTCCAGGAAGAGAGGCAGAACTCACTGCCAGGTGGAGCAGCTA
GAGGTATTTAGAGAGAGCAAATAAGCAGGTGGAAGAAGTGTGTAAGAACTGGCTGACTCTGACCAAG
CCAGCAAGGTGCAGCAGCAGAAGCTGAAGGCTGTCCAGGCTCAGGAGGGCAGAGCCAGCAGGAGGCCCA
GCGCCTCCAGGCCAGCTGAATGAACTGCAAGCCAGTTGAGCCAGAAGGAGCAGGCAGCTGAGCACTAT
AAGCTGCAGATGGAGAAAGCCAAAACACATTATGATGCCAAGAAGCAGCAGAACCAGAGCTGCAGGAGC
AGCTGCGGAGCCTGGAGCAGCTGCAGAAGGAAAACAAAGAGCTGCGAGCTGAAGCTGAACGGCTGGGCCA
TGAGCTACAGCAGGCTGGGCTGAAGACCAAGGAGGCTGAACAGACCTGCCGCCACCTTACTGCCAGGTG
CGCAGCCTGGAGGCACAGGTTGCCATGCAGACCAGCAGCTTCGAGACCTGGGCAAAATCCAGGTGGCAA

CTGATGCTTTAAAGAGCCGTGAGCCCCAGGCTAAGCCCCAGCTGGACTTGAGTATTGACAGCCTGGATCT
GAGCTGCGAGGAGGGGACCCCACTCAGTATCACCAGCAAGCTGCCTCGTACCCAGCCAGACGGCACCAGC
GTCCCTGGAGAACCAGCCTCACCTATCTCCAGCGCCTGCCCCCAAGGTAGAATCCCTGGAGAGTCTCT
ACTTCACTCCCATCCCTGCTCGGAGTCAGGCCCCCTGGAGAGCAGCCTGGACTCCCTGGGAGACGTCTT
CCTGGACTCGGGTCGTAAGACCCGCTCCGCTCGTCGGCGCACCACGCAGATCATCAACATCACCATGACC
AAGAAGCTAGATGTGGAAGAGCCAGACAGCGCCAACTCATCGTTCTACAGCACGGGTCTGCTCCTGCTT
CCCAGGCTAGCCTGCGAGCCACCTCCTCTACTCAGTCTCTAGCTCGCCTGGGTTCTCCCGATTATGGCAA
CTCAGCCCTGCTCAGTTGCCTGGCTACCGCCCCACCACTCGCAGTTCTGCTCGTCGTTCCAGGCCGGG
GTGTCCAGTGGGGCCCTCCAGGAAGGAACAGTTCTACATGGGCACTTGCCAGGATGAGCCTGAGCAGC
TGGATGACTGGAACCGCATTGCAGAGCTGCAGCAGCGCAATCGAGTGTGCCCCCACATCTGAAGACCTG
CTATCCCTGGAGTCCAGGCCTTCCCTGAGCCTGGGCACCATCACAGATGAGGAGATGAAAAGTGGAGAC
CCCCAAGAGACCCTGCGCCGAGCCAGCATGCAGCCAATCCAGATAGCCGAGGGCACTGGCATCACCACCC
GGCAGCAGCGCAAACGGGTCTCCCTAGAGCCCCACCGGGCCCTGGAAGTCTGAGTCTAAGAAGGCCAC
CAGCTGTTTCCCACGCCCATGACTCCCCGAGACCGACATGAAGGGCGCAAACAGAGCACTACTGAGGCC
CAGAAGAAAGCAGCTCCAGCTTCTACTAACAGGCTGACCGGCGCCAGTCGATGGCCTTCAGCATCCTCA
ACACACCCAAGAAGCTAGGGAACAGCCTTCTGCGCGGGGAGCCTCAAAGAAGGCCCTGTCCAAGGCTTC
CCCCAACACTCGCAGTGAACCCGCCGTTCTCCGCGCATTGCCACCACCAGCCAGCGCCGCCACTGCT
GCCGCCATTGGTGCCACCCCTCGAGCCAAGGGCAAGGCAAAGCAC

ACGCGTACGCGGCCGCTCGAG - GFP Tag - GTTAA

Protein Sequence: >RG215124 representing NM_006185
 Red=Cloning site Green=Tags(s)

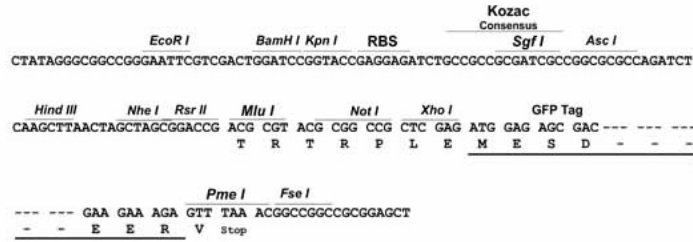
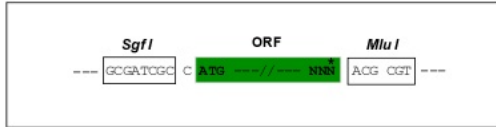
MTLHATRGAALLSWVNSLHVADPVEAVLQLQDCSIFIKIIDRIHGTEEGQQILKQPVSERLDFVCSFLQK
 NRKHPSSPECLVSAQKVLGSELELAKMTMLLLYHSTMSSKSPRDWEQFEYKIQAE LAVILKFVLDHEDG
 LNLNEDLENFLQKAPVPSTCSSTFPEELSPPSHQAKREIRFLELQKVASSSSGNNFLSGSPASPMGDILQ
 TPQFQMRRLKKQLADERSNRDELELELAENRKLKTEKDAQIAMMQRIDRLALLNEKQAASPLEPKELEE
 LRDKNESLTMRLHETLKQCQDLKTEKSQMDRKINQLSEENGDL SFKLREFASHLQQLQDALNELTEEHSK
 ATQEWLEKQAQLEKELSAALQDKKCLEEKNEILQGKLSQLEEHLSQLQDNPPQEKGVLGDVQLLETLKQ
 EAATLAANNTQLQARVEMLETERGQQEAKLLAERGHFEEEEKQLSSLITDLQSSISNLSQAKEELEQASQ
 AHGARLTAQVASTSELTTLNATIQQQDQELAGLKQQAQKQQAQLAQLTQQQEASQGLRHQVEQLSSSL
 KQKEQQLKEVAEKQEA TRQDHAQQLATAAEEREASLRERDAALKQLEALEKEKAAKLEILQQQLQVANE
 RDSAQTSVTQAQREKAE LSRKVEELQACVETARQEQHEAQAQVAEELQLRSEQQKATEKERVAQEKDQL
 QEQLQALKESLKVTKGSL EEEKRRAADALEEQRCISELKAETRSLVEQHKRERKELEERAGRKGLEAR
 LQQLGEA HQAETEVL RRELAEMAQAHTAESECEQLVKEVAAWRERYEDSQEEAQYGAMFQEQLMTLKE
 ECEKARQELQEAKKQVAGIESHSELQISRQQNELAELHANLARALQQVQKEVRAQKLADLSTLQEKMA
 ATSKEVARLETLVRKAGEQQETASREL VKEPARAGDRQPEWLEEQGRQFCSTQAALQAMERAEQMGNE
 LERLRAALMESQGGQQEERGQQEREVARLTQERGRAQADLALKAARAELEMRLQNALNEQRVEFATLQE
 ALAHALTEKEGKQDELAKLRGLEAAQIKEL EELRQTVKQLKEQLAKKEKEHASGSGAQSEAAGRTEPTGP
 KLEALRAEVSKLEQQCQKQEQADSLERSLEAERASRAERDSALET LQQGLEEKAQELGHSQSALASAQR
 ELAAFRTKVQDHSKAEDWKQAQVARGRQEAERKNSLISSEEEVSLNRQVLEKEGESKELKRLVMAESE
 KSQKLEERLRLQAETASNSARAAERSSALREEVQSLREEAEKQVASENLRQELTQAERAEELGQELK
 AWQEKFFQKEQALSTLQLEHTSTQALVSELLPAKHL CQQLQAEQAAAERHRELEQSKQAAGGLRAELL
 RAQRELGELIPLRQKVAEQERTAQQLRAEKASYAEQLSMLKKAHGLLAEENRGLGERANLGRQFLEVELD
 QAREKYVQELAAVRADAE TRLAEVQREAQSTARELEVMTAKYEGAKVKVLEERQRFQEERQKLTAQVEQL
 EVFQREQTKQVEELSKKLADSDQASKVQQKLVKAVQAQGGESQQAQRLQAQLNELQAQLSQKEQAAEHY
 KLQMEKAKTHYDAKKQQNQLQEQLRSLEQLQKENKELRAEAERLGHELQQAGLKTKAEQTCRHLTAQV
 RSLEAQVAHADQQLRDLGKFQVATDALKSREPQAKPQLDLSDSLDLSC EEGTPLSITSKLPRTQPDGTS
 VPGEPASPI SQRLPPKVESLESLYFTPIPARSQAPLESSLDLGDVFLDSGRKTRSARRRTTQIINITMT
 KKL DVEEPDSANSFYSTRSAPASQASLRATSSTQSLARLGSPDYGNSALLSLPGYRPTTRSSARRSQAG
 VSSGAPPGRNSFYMGTCQDEPEQLDDWNR IAE LQQNRVCPPHLKT CYPLESRPSLSLGTITDEEMKTGD
 PQETLRRASMQPIQIAEGTGITTRQQRKRVSLEPHQGGTPE SKKATSCFPRPMTPRDRHEGRKQSTTEA
 QKKAAPASTKQADRRQSMAFSILNTPK KLGNSLLRRGASKKALSKASPNTRS GTRSPRIATTTASAATA
 AAI GATPRAKGKAKH

TRTRPLE – GFP Tag – V

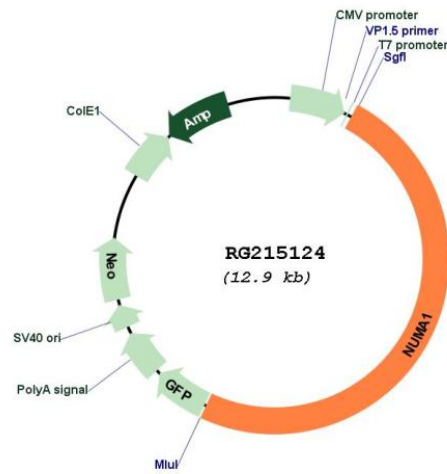
Restriction Sites: Sgfl-Mlul

Cloning Scheme:

Cloning sites used for ORF Shutting:



Plasmid Map:



ACCN: NM_006185
 ORF Size: 6345 bp

OTI Disclaimer: Due to the inherent nature of this plasmid, standard methods to replicate additional amounts of DNA in E. coli are highly likely to result in mutations and/or rearrangements. Therefore, OriGene does not guarantee the capability to replicate this plasmid DNA. Additional amounts of DNA can be purchased from OriGene with batch-specific, full-sequence verification at a reduced cost. Please contact our customer care team at custsupport@origene.com or by calling 301.340.3188 option 3 for pricing and delivery.

The molecular sequence of this clone aligns with the gene accession number as a point of reference only. However, individual transcript sequences of the same gene can differ through naturally occurring variations (e.g. polymorphisms), each with its own valid existence. This clone is substantially in agreement with the reference, but a complete review of all prevailing variants is recommended prior to use. [More info](#)

OTI Annotation: This clone was engineered to express the complete ORF with an expression tag. Expression varies depending on the nature of the gene.

Components: The ORF clone is ion-exchange column purified and shipped in a 2D barcoded Matrix tube containing 10ug of transfection-ready, dried plasmid DNA (reconstitute with 100 ul of water).

Reconstitution Method:

1. Centrifuge at 5,000xg for 5min.
2. Carefully open the tube and add 100ul of sterile water to dissolve the DNA.
3. Close the tube and incubate for 10 minutes at room temperature.
4. Briefly vortex the tube and then do a quick spin (less than 5000xg) to concentrate the liquid at the bottom.
5. Store the suspended plasmid at -20°C. The DNA is stable for at least one year from date of shipping when stored at -20°C.

RefSeq: [NM_006185.4](#)

RefSeq Size: 7182 bp

RefSeq ORF: 6348 bp

Locus ID: 4926

UniProt ID: [Q14980](#)

Cytogenetics: 11q13.4

Domains: M

Gene Summary: This gene encodes a large protein that forms a structural component of the nuclear matrix. The encoded protein interacts with microtubules and plays a role in the formation and organization of the mitotic spindle during cell division. Chromosomal translocation of this gene with the RARA (retinoic acid receptor, alpha) gene on chromosome 17 have been detected in patients with acute promyelocytic leukemia. Alternative splicing results in multiple transcript variants. [provided by RefSeq, Nov 2013]