

Product datasheet for **RG215117**

NLRP7 (NM_139176) Human Tagged ORF Clone

Product data:

Product Type: Expression Plasmids
Product Name: NLRP7 (NM_139176) Human Tagged ORF Clone
Tag: TurboGFP
Symbol: NLRP7
Synonyms: CLR19.4; HYDM; NALP7; NOD12; PAN7; PYPAF3
Mammalian Cell Selection: Neomycin
Vector: pCMV6-AC-GFP (PS100010)
E. coli Selection: Ampicillin (100 ug/mL)
ORF Nucleotide Sequence: >RG215117 representing NM_139176
Red=Cloning site Blue=ORF Green=Tags(s)

TTTTGTAATACGACTCACTATAGGGCGGCCGGAATTCGTCGACTGGATCCGGTACCGAGGAGATCTGCC
GCC**CGATCGCC**

ATGACATCGCCCCAGCTAGAGTGGACTCTGCAGACCCCTTCTGGAGCAGCTGAACGAGGATGAATTAAGA
GTTTCAAATCCCTTTTATGGGCTTTTCCCTCGAAGACGTGCTACAGAAGACCCCATGGTCTGAGGTGGA
AGAGGCTGATGGCAAGAACTGGCAGAAATTCGGTCAACACCTCCTCAGAAAATTGGATAAGGAATGCC
ACTGTGAACATCTTGAAGAGATGAATCTCACGGAATTGTGAAGATGGCAAAGGCTGAGATGATGGAGG
ACGGACAGGTGCAAGAAATAGATAATCCTGAGCTGGGAGATGCAGAAGAAGACTCGGAGTTAGCAAAGCC
AGGTGAAAAGGAAGGATGGAGAAATCAATGGAGAAACAGTCTTTGGTCTGGAAGAACACCTTTTGGCAA
GGAGACATTGACAATTTCCATGACGACGTCCTCTGAGAAACCAACGGTTCATTCCATTCTGAATCCCA
GAACACCCAGGAAGCTAACACCTTACACGGTGGTCTGCACGGCCCCGAGGCGTGGGAAAACACGCT
GGCCAAAAAGTGTATGCTGGACTGGACAGACTGCAACCTCAGCCCGACGCTCAGATACGCGTTTACCTC
AGCTGCAAGGAGCTCAGCCGCATGGGCCCTGCAGTTTGCAGAGCTGATCTCAAAGACTGGCCTGAAT
TGCAGGATGACATTCCAAGCATCCTAGCCCAAGCACAGAGAATCCTGTTCTGGTTCGATGGCCTTGATGA
GCTGAAAGTCCCACCTGGGGCGCTGATCCAGGACATCTGCGGGGACTGGGAGAAGAAGAAGCCGGTGCCC
GTCCTCCTGGGGAGTTTGTGAAGAGGAAGATGTTACCCAGGGCAGCCTTGTGGTCCACCAGCGGCCCA
GGGACTGAGGGACCTCCAGCTCCTGGCGCAGCAGCCGATCTACGTAAGGGTGGAGGGCTTCTGGAGGA
GGACAGGAGGGCCTATTTCTGAGACACTTTGGAGACGAGGACCAAGCCATGCGTGCCTTTGAGCTAATG
AGGAGCAACGCGCCCTGTTCCAGCTGGGCTCGGCCCCCGCGGTGTGCTGGATTGTGTCACGACTCTGA
AGCTGCAGATGGAGAAGGGGAGGACCCGGTCCCCACCTGCCTCACCCGCACGGGCTGTTCTGCGTTT
CCTCTGCACCGGTTCCCGCAGGGCGCACAGCTGCGGGGCGCGCTGCGGACGCTGAGCCTCTGGCCGCG
CAGGGCCTGTGGGCGCAGATGTCCGTGTTCCACCGAGAGGACCTGGAAAGGCTCGGGGTGCAGGAGTCCG
ACCTCCGTCTGTTCTGGACGGAGACATCTCCGCCAGGACAGAGTCTCAAAGGCTGCTACTCCTTCAT
CCACCTCAGTTCACGAGTTTCTCACTGCCCTGTTCTACGCCCTGGAGAAGGAGGAGGGGAGGACAGG



GACGGCCACGCTGGGACATCGGGGACGTACAGAAGCTGCTTCCGGAGAAGAAAGACTCAAGAACCCCG
 ACCTGATTCAAGTAGGACTTCTTATTCGGCCTCGTAAACGAGAAGAGAGCCAAAGGAGTTGGAGGCCAC
 TTTTGGCTGCCGGATGTACCCGGACATCAAACAGGAATTGCTGCAATGCAAAGCACATCTTCATGCAAA
 AAGCCCTATCCGTGACCGACCTGAAGGAGGTCTTGGGCTGCCTGTATGAGTCTCAGGAGGAGGAGCTGG
 CGAAGGTGGTGGTGGCCCCGTTCAAGGAAATTTCTATTCACCTGACAAATACTTCTGAAGTATGCATTG
 TTCCTTCAGCCTGAAGCATTGTCAAGACTTGCAGAAACTCTACTGCAGGTAGCAAAGGGGGTGTTCCTG
 GAGAATTACATGGATTTTGAAGTGGACATTGAATTTGAAAGCTCAAACAGCAACCTCAAGTTTCTGGAAG
 TGAACAAGCTTCTGAGTGACTTCTGTGCGGATTCTTGTGACCAGTAACCCGTAGCACCTGTCA
 TCTGCAGAAAGTGAGATTAAAAACGTACCCCTGACACCGCGTACCCGGACTTCTGTCTTGCTTTCATT
 GGGAGAAGACCCTCACGCACCTGACCCTGGCAGGGCACATCGAGTGGGAACGCACGATGATGCTGATGC
 TGTGTGACCTGCTCAGAAATCATAAATGCAACCTGCAGTACCTGAGGTTGGGAGTCACTGTGCCACCC
 GGAGCAGTGGGCTGAATTCCTATGTCCTCAAAGCCAACCAAGTCCCTGAAGCACCTGCTCTCAGCC
 AATGTGCTCCTGGATGAGGGTGCATGTTGCTGTACAAGACCATGACACGCCAAAACACTTCTGCAGA
 TGTTGTCGTTGAAAACGTGCTCTTACAGAAGCCAGTTGCAAGGACCTTGTCTGTCTTGGTTGTCAG
 CAAGAAGCTGACACACCTGTGCTTGGCCAAGAACCCATTGGGGATACAGGGGTGAAGTTTCTGTGTGAG
 GGCTTGAGTTACCTGATTGAAACTGCAGACCTTGGTGTACAGCAATGACGATAAACCAAGCTTGGCT
 GTAGATATCTCTCAGAGGCGCTCCAAGAAGCTGCAGCCTCACAACCTGGACTTGAGTATCAACCAGAT
 AGCTCGTGGATTGTGGATTCTCTGTGAGCATTAGAGAATCCAACTGTAACTAAAACACTACGCCTC
 TGGAGCTGCTCCCTCATGCCTTCTATTGTGAGCATTGGATCTGCTCTCCTCAGCAATCAGAAGCTTG
 AAACCTGGACCTGGGCCAGAATCATTTGTGGAAGAGTGGCATAATTAAGCTCTTTGGGGTTCTAAGACA
 AAGAACTGGATCCTTGAAGATACTCAGGTTGAAGACCTATGAACTAATTTGAAATCAAGAAGCTGTTG
 GAGGAAGTGAAGAAAAGAAATCCCAAGCTGACTATTGATTGCAATGCTTCCGGGGCAACGGCACCTCCGT
 GCTGTGACTTTTTTTGC

AGCGGACCGACGCGTACGCGGCCGCTCGAG - GFP Tag - GTTTAA

Protein Sequence:

>RG215117 representing NM_139176
 Red=Cloning site Green=Tags(s)

MTSPQLEWTLQTLLEQLNEDELKSFKSLWAFPLEDVLQKTPWSEVEEADGKKLAEILVNTSSENWIRNA
 TVNILEEMNLTELCKMAKAEMMEDGQVQEIDNPELGDAEEDSELAKPGEKEGWRNSMEKQSLVWKNFTWQ
 GDIDNFHDDVTLRNQRFIPFLNPRTPRKLTPYTVVLHGPAGVGKTTLAKKCMLDWTDCNLSPTLRYAFYL
 SCKELSRMGPCSF AELISKDWPELQDDIPSILAQAQRILFVVDGLDELKVPPGALIQDICGDWEKKKVPV
 VLLGSLKLRKMLPRAALLVTTRPRALRDLQLLAQQPIYVRVEGFLEEDRRAYFLRHFGEDEDQAMRAFELM
 RSNAALFQLGSAPAVCWIVCTTLKLQMEKGEDPVPTCLTRTGLFLRFLCSRFPQGAQLRGALRTL SLLAA
 QGLWAQMSVFHREDLERLGVQESDLRLFLDGDILRQDRVSKGCYSFIHLSFQQFLTALFYALEKEEGEDR
 DGHAWDIGDVQKLLSGEERLKNPDLIQVGHFLFGLANEKRAKELEATFGCRMSPDIKQELLQCKAHLHAN
 KPLSVTDLKEVLGCLYESQEEELAKVVVAPFKEISIHLLTNTSEVMHCSFSLKHCQDLQKLSLQVAKGVFL
 ENYMFELDIEFESSNSNLKFLVQKSFSDSSVRILCDHVTRSTCHLQKVEIKNVTPDTAYRDFCLAFI
 GKKTLLTHLTLAGHIEWERTMMLMLCDLLRNHKNLQYLRLGGHCATPEQWAEFFVYVKANQSLKHLRLSA
 NVLLDEGAMLLYKTMTRPKHFLQMLSLENCRLTEASCKDLAAVLVSKKLTHLCLAKNPIGDTGVKFLCE
 GLSYPDCKLQTLVLQQCSITKLGCRYLSEALQEACSLTNLDLSINQIARGLWILCQALENPNCLKHLRL
 WSCSLMPFYCQHLGSALLSNQKLETLDLQONHLWKSIGIKLFGVLRQRTGSLKILRLKTYETNLEIKKLL
 EEVKEKNPKLIDCNASGATAPPCCDFFC

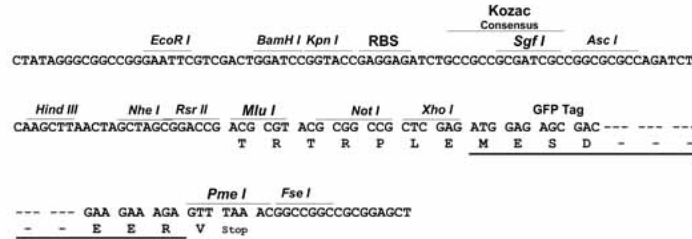
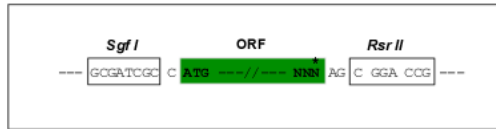
SGPTRRRLE - GFP Tag - V

Restriction Sites:

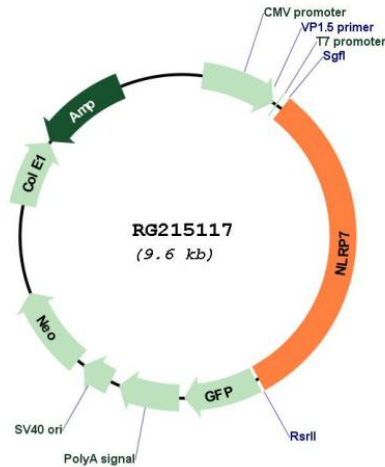
SgfI-RsrII

Cloning Scheme:

Cloning sites used for ORF Shuttling:



Plasmid Map:



ACCN: NM_139176

ORF Size: 3027 bp

OTI Disclaimer: The molecular sequence of this clone aligns with the gene accession number as a point of reference only. However, individual transcript sequences of the same gene can differ through naturally occurring variations (e.g. polymorphisms), each with its own valid existence. This clone is substantially in agreement with the reference, but a complete review of all prevailing variants is recommended prior to use. [More info](#)

OTI Annotation:	This clone was engineered to express the complete ORF with an expression tag. Expression varies depending on the nature of the gene.
Components:	The ORF clone is ion-exchange column purified and shipped in a 2D barcoded Matrix tube containing 10ug of transfection-ready, dried plasmid DNA (reconstitute with 100 ul of water).
Reconstitution Method:	<ol style="list-style-type: none">1. Centrifuge at 5,000xg for 5min.2. Carefully open the tube and add 100ul of sterile water to dissolve the DNA.3. Close the tube and incubate for 10 minutes at room temperature.4. Briefly vortex the tube and then do a quick spin (less than 5000xg) to concentrate the liquid at the bottom.5. Store the suspended plasmid at -20°C. The DNA is stable for at least one year from date of shipping when stored at -20°C.
RefSeq:	NM_139176.3 , NP_631915.2
RefSeq Size:	3331 bp
RefSeq ORF:	3030 bp
Locus ID:	199713
UniProt ID:	Q8WX94
Cytogenetics:	19q13.42
Gene Summary:	This gene encodes a member of the NACHT, leucine rich repeat, and PYD containing (NLRP) protein family. It has an N-terminal pyrin domain, followed by a NACHT domain, a NACHT-associated domain (NAD), and a C-terminal leucine-rich repeat (LRR) region. NLRP proteins are implicated in the activation of proinflammatory caspases through multiprotein complexes called inflammasomes. This gene may act as a feedback regulator of caspase-1-dependent interleukin 1-beta secretion. Alternative splicing results in multiple transcript variants encoding different isoforms. [provided by RefSeq, Jul 2008]