

## Product datasheet for **RG215115**

### TUSC3 (NM\_006765) Human Tagged ORF Clone

#### Product data:

Product Type:	Expression Plasmids
Product Name:	TUSC3 (NM_006765) Human Tagged ORF Clone
Tag:	TurboGFP
Symbol:	TUSC3
Synonyms:	D8S1992; M33; MagT2; MRT7; MRT22; N33; OST3A; SLC58A2
Mammalian Cell Selection:	Neomycin
Vector:	pCMV6-AC-GFP (PS100010)
E. coli Selection:	Ampicillin (100 ug/mL)
ORF Nucleotide Sequence:	>RG215115 representing NM_006765 Red=Cloning site Blue=ORF Green=Tags(s)

TTTTGTAATACGACTCACTATAGGGCGGCCGGAATTCGTCGACTGGATCCGGTACCGAGGAGATCTGCC  
GCC**CGATCGCC**

ATGGGGGCCCGGGCGCTCCTTCACGCCGTAGGCAAGCGGGCGGCGCTGCGGTACCTGCCACCGGGA  
GCTTTCCTTCTCCTGCTGCTGCTGCTGCATCCAGCTCGGGGAGGACAGAAGAAAAGGAGAA  
TCTTTTAGCTGAAAAGTAGAGCAGCTGATGGAATGGAGTTCAGACGCTCAATCTCCGAATGAATGGT  
GATAAATCCGAAAATTTATAAAGGCACCACCTCGAACTATTCCATGATTGTTATGTTCACTGCTCTTC  
AGCCTCAGCGGCAGTGTCTGTGTGCAGGCAAGCTAATGAAGAATATCAAATACTGGCGAACTCCTGGCG  
CTATTCATCTGCTTTTTGTAACAAGCTCTTCTCAGTATGGTGGACTATGATGAGGGGACAGACGTTTTT  
CAGCAGCTCAACATGAACTCTGCTCCTACATTCATGCATTTTCTCCAAAAGGCAGACCTAAGAGAGCTG  
ATACTTTTGACCTCCAAAGAATTGGATTGCGAGCTGAGCAACTAGCAAAGTGGATTGCTGACAGAACGGA  
TGTTTCATATTCGGGTTTTAGACCACCAACTACTCTGGTACCATTGCTTTGGCCCTGTTAGTGTGCGCTT  
GTTGGAGGTTTGCTTTATTTGAGAAGGAACAATTGGAGTTCATCTATAACAAGACTGGTTGGCCATGG  
TGTCTCTGTGATAGTCTTTGCTATGACTTCTGGCCAGATGTGGAACCATATCCGTGGACCTCCATATGC  
TCATAAGAACCCACACAATGGACAAGTGAGCTACATTCATGGGAGCAGCCAGGCTCAGTTTGTGGCAGAA  
TCACACATTATTCTGGTACTGAATGCCGCTATCACCATGGGGATGTTTCTCTAAATGAAGCAGCAACTT  
CGAAAGCGATGTTGAAAAGACGGATAATTTGCCTAGTGGGATTGGCCCTGGTGGTCTTCTTCTTCAG  
TTTTCTACTTTCAATATTTCTGTTCCAAGTACCACGGCTATCCTTATAGTGATCTGGACTTTGAG

**ACGCGT**ACGCGGCCGCTCGAG - GFP Tag - GTTTAA



[View online »](#)

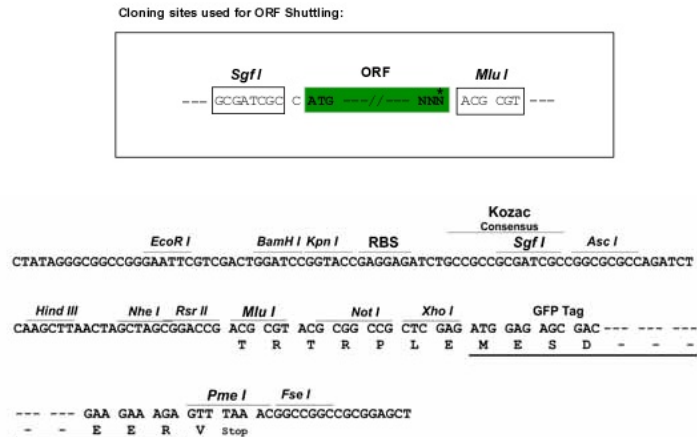
**Protein Sequence:** >RG215115 representing NM\_006765  
 Red=Cloning site Green=Tags(s)

MGARGAPSRRRQAGRRLRYLPTGSFPFLLLLLLLLCIQLGGGQKKKENLLAEKVEQLMEWSSRRSIFRMNG  
 DKFRKFIKAPPRNYSMIVMFTALQPQRQCSVCRQANEYQILANSWRYSSAFCKNLFFSMVDYDEGTDVF  
 QQLNMNSAPTFMHFPPKGRPKRADTFDLQRIGFAAEQLAKWIADRTDVHIRVFRPPNYSGTIALALLVSL  
 VGGLLYLRRNNLEFIYKNTGWAMVSLCIVFAMTSGQMWNHIRPPYAHKNPHNGQVSYIHGSSQAQFVAE  
 SHIILVLNAAITMGMVLLNEAATSKGDVKGRRRIICLVGLGLVVFVFFSFLLSIFRSKYHGYPSDLDFE

TRTRPLE - GFP Tag - V

**Restriction Sites:** SgfI-MluI

**Cloning Scheme:**



**ACCN:** NM\_006765

**ORF Size:** 1044 bp

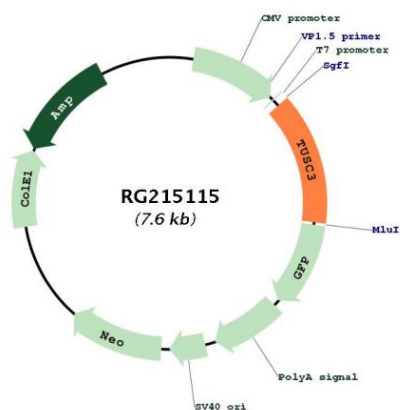
**OTI Disclaimer:** The molecular sequence of this clone aligns with the gene accession number as a point of reference only. However, individual transcript sequences of the same gene can differ through naturally occurring variations (e.g. polymorphisms), each with its own valid existence. This clone is substantially in agreement with the reference, but a complete review of all prevailing variants is recommended prior to use. [More info](#)

**OTI Annotation:** This clone was engineered to express the complete ORF with an expression tag. Expression varies depending on the nature of the gene.

**Components:** The ORF clone is ion-exchange column purified and shipped in a 2D barcoded Matrix tube containing 10ug of transfection-ready, dried plasmid DNA (reconstitute with 100 ul of water).

<b>Reconstitution Method:</b>	<ol style="list-style-type: none"><li>1. Centrifuge at 5,000xg for 5min.</li><li>2. Carefully open the tube and add 100ul of sterile water to dissolve the DNA.</li><li>3. Close the tube and incubate for 10 minutes at room temperature.</li><li>4. Briefly vortex the tube and then do a quick spin (less than 5000xg) to concentrate the liquid at the bottom.</li><li>5. Store the suspended plasmid at -20°C. The DNA is stable for at least one year from date of shipping when stored at -20°C.</li></ol>
<b>RefSeq:</b>	<a href="#">NM_006765.4</a>
<b>RefSeq Size:</b>	1613 bp
<b>RefSeq ORF:</b>	1047 bp
<b>Locus ID:</b>	7991
<b>UniProt ID:</b>	<a href="#">Q13454</a>
<b>Cytogenetics:</b>	8p22
<b>Domains:</b>	OST3_OST6
<b>Protein Families:</b>	Druggable Genome, Transmembrane
<b>Protein Pathways:</b>	Metabolic pathways, N-Glycan biosynthesis
<b>Gene Summary:</b>	<p>This gene encodes a protein that has been associated with several biological functions including cellular magnesium uptake, protein glycosylation and embryonic development. This protein localizes to the endoplasmic reticulum and acts as a component of the oligosaccharyl transferase complex which is responsible for N-linked protein glycosylation. This gene is a candidate tumor suppressor gene. Homozygous mutations in this gene are associated with autosomal recessive nonsyndromic mental retardation-7 and in the proliferation and invasiveness of several cancers including metastatic pancreatic cancer, ovarian cancer and glioblastoma multiform. [provided by RefSeq, Oct 2017]</p>

Product images:



Circular map for RG215115