

Product datasheet for **RG215105**

GSG1 (NM_153823) Human Tagged ORF Clone

Product data:

Product Type:	Expression Plasmids
Product Name:	GSG1 (NM_153823) Human Tagged ORF Clone
Tag:	TurboGFP
Symbol:	GSG1
Mammalian Cell Selection:	Neomycin
Vector:	pCMV6-AC-GFP (PS100010)
E. coli Selection:	Ampicillin (100 ug/mL)
ORF Nucleotide Sequence:	>RG215105 representing NM_153823 Red=Cloning site Blue=ORF Green=Tags(s)

TTTTGTAATACGACTCACTATAGGGCGGCCGGAATTCGTCGACTGGATCCGGTACCGAGGAGATCTGCC
GCC**CGATCGCC**

ATGGCCAAGATGGAGCTCTCGAAGGCCTTCTCTGGCCAGCGGACACTCCTATCTGCCATCCTCAGCATGC
TATCACTCAGCTTCTCCACAACCCCCTGCTCAGCAACTACTGGTTTGTGGGCACACAGAAGGTGCCAA
GCCCTGTGCGAGAAAGGTCTGGCAGCCAAGTGCTTTGACATGCCAGTGTCCCTGGATGGAGATACCAAC
ACATCCACCCAGGAGGTGGTACAATACTGGGAGACTGGGGATGACCGTTCTCCTCCGGAGCTTCC
GGAGTGGCATGTGGTATCCTGTGAGGAACTGTGGAAGAACCAGGGGAGAGGTGCCGAAGTTTCATTGA
ACTTACACCACCAGCCAAGAGAGAAATCCTATGGTTATCCCTGGGAACGCAGATCACCTACATCGGACTT
CAATTCATCAGCTTCTCCTGCTACTAACAGACTTGTACTCACTGGGAACCCTGCCTGTGGGCTCAAAC
TGAGCGCCTTTGCTGCTGTTTCTCTGTCTGTCAGGTCTCCTGGGGATGGTGGCCACATGATGTATTC
ACAAGTCTTCCAAGCGACTGTCAACTTGGGTCCAGAAGACTGGAGACCACATGTTTGAATTATGGCTGG
GCCTTCTACATGGCCTGGCTCTCCTTACCTGCTGCATGGCGTCGGTGTACCACCTTCAACACGTACA
CCAGGATGGTGTGGAGTTCAAGTGCAAGCATAGTAAGAGCTTCAAGGAAAACCCGAAGTGCCTACCACA
TCACCATCAGTGTTCCTCGCGGCTGTCAAGTGCAGCCCCACCGTGGTCTTTGACCAGCTACCAC
CAGTATCATAATCAGCCATCCACTCTGTCTCTGAGGGAGTCGACTTCTACTCCGAGCTGCGGAACAAGG
GATTTCAAAGAGGGGCCAGCCAGGAGCTGAAAGAAGCAGTTAGGTCATCTGTAGAGGAAGAGCAGTGT

ACGCGTACGCGGCCGCTCGAG - GFP Tag - GTTTAA



[View online »](#)

Protein Sequence: >RG215105 representing NM_153823
Red=Cloning site Green=Tags(s)

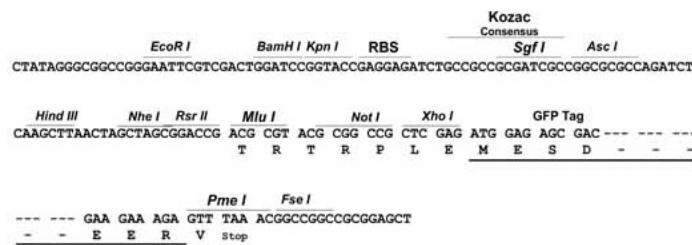
MAKMELSKAFSGQRTLLSAILSMLSLSFSTTPLLSNYWFVGTQKVPKPLCEKGLAAKCFDMPVSLDGDNT
 TSTQEVVQYNWETGDDRF SFRSFRSGMWLSCEETVEEPGERCSFIELTPPAKREILWLSLGTQITYIGL
 QFISFLLLLLDLLLTGNPACGLKLSAFAAVSSVLSGLLGMVAHMMYSQVFQATVNLGPEDWRPHVWNYGW
 AFYMAWLSFTCCMASAVTTFNTYTRMVLEFKCKHKSFKENPNCLPHHHQCFPRRLSSAAPTVGPLTSYH
 QYHNQPIHSVSEGVDFYSELRNKGFQRGASQELKEAVRSSVEEEQC

TRTRPLE - GFP Tag - V

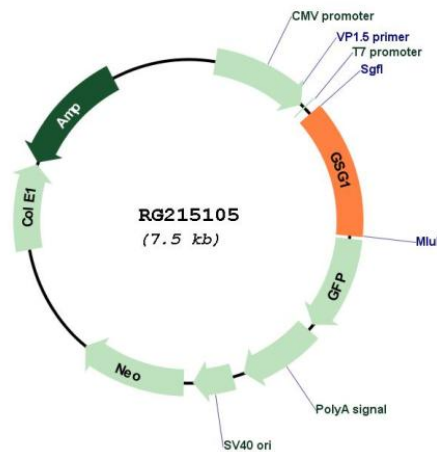
Restriction Sites: SgfI-MluI

Cloning Scheme:

Cloning sites used for ORF Shutting:



Plasmid Map:



ACCN: NM_153823

ORF Size: 978 bp

OTI Disclaimer:	The molecular sequence of this clone aligns with the gene accession number as a point of reference only. However, individual transcript sequences of the same gene can differ through naturally occurring variations (e.g. polymorphisms), each with its own valid existence. This clone is substantially in agreement with the reference, but a complete review of all prevailing variants is recommended prior to use. More info
OTI Annotation:	This clone was engineered to express the complete ORF with an expression tag. Expression varies depending on the nature of the gene.
Components:	The ORF clone is ion-exchange column purified and shipped in a 2D barcoded Matrix tube containing 10ug of transfection-ready, dried plasmid DNA (reconstitute with 100 ul of water).
Reconstitution Method:	<ol style="list-style-type: none">1. Centrifuge at 5,000xg for 5min.2. Carefully open the tube and add 100ul of sterile water to dissolve the DNA.3. Close the tube and incubate for 10 minutes at room temperature.4. Briefly vortex the tube and then do a quick spin (less than 5000xg) to concentrate the liquid at the bottom.5. Store the suspended plasmid at -20°C. The DNA is stable for at least one year from date of shipping when stored at -20°C.
RefSeq:	NM_153823.1 , NP_722545.1
RefSeq Size:	2391 bp
RefSeq ORF:	981 bp
Locus ID:	83445
Cytogenetics:	12p13.1
Protein Families:	Transmembrane
Gene Summary:	May cause the redistribution of PAPOLB from the cytosol to the endoplasmic reticulum. [UniProtKB/Swiss-Prot Function]