

Product datasheet for **RG215097**

L3MBTL3 (NM_032438) Human Tagged ORF Clone

Product data:

Product Type:	Expression Plasmids
Product Name:	L3MBTL3 (NM_032438) Human Tagged ORF Clone
Tag:	TurboGFP
Symbol:	L3MBTL3
Synonyms:	MBT-1; MBT1
Mammalian Cell Selection:	Neomycin
Vector:	pCMV6-AC-GFP (PS100010)
E. coli Selection:	Ampicillin (100 ug/mL)



[View online »](#)

ORF Nucleotide Sequence:

>RG215097 representing NM_032438
 Red=Cloning site Blue=ORF Green=Tags(s)

TTTTGTAATACGACTCACTATAGGGCGGCCGGAATTCGTCGACTGGATCCGGTACCGAGGAGATCTGCC
 GCC**CGCATCGCC**

ATGACTGAATCTGCCTCTAGCACAAAGTGGTCAAGAGTTTGTGTTCAGTGTTATGGACTGGAAGATG
 GAGTGGGCACGTTACCAGGAAGTGACTTAAAGTTTCGGGTAAATGAGTTTGGAGCCCTGGAAGTTATTAC
 AGATGAGAATGAGATGGAATGTTAAAAAAGCAACTGCTACCACCACTGGATGGTACCAACTGCTCAA
 GAAGCCCCGACCTCTCCCCGAGCTCCAGGCCGTATTTCCACCTGCCTACTGGACATCTCCACCTGGAT
 GTCCACAGTCTTTTCAGAGAAGACTGGGATGCCTTTCAGGTTGAAGGATCCAGTGAAGTAGAAGGGCT
 TCAGTTCTGTGAGAACTGTTGTCAAGTATGGCAACGTAGATGAGTGTCTTCTGGAGGAACTATTGCAGC
 CAGAATTGTGCTCGGCACATCAAAGATAAAGATCAGAAGGAAGAAAGGGACGTAGAAGAAGACAATGAGG
 AAGAAGATCCTAAGTGTAGTCGGAAGAAAAACAAAATTATCTCTGAAAGCTGACACCAAGGAGGATGG
 AGAAGAGAGAGATGATGAAATGGAGAACAACAAGATGTAAAGATCCTGAGGGTTTCGACAGAGACCGG
 AGGAAAAGACGAGGGGATTCGGCTGTACTAAAGCAGGGTTTGCCTCCTAAAGGAAAGAAAGCGTGGTGTCT
 GGGCATCTACCTGGAAGAGGAGAAAGCGGTGGCAGTGCCGCGCAAGCTGTTCAAGGAGCATCAATCCTT
 TCCATATAACAAAAATGGATTCAAAGTTGGCATGAAATTAAGAAGCGTGGATCCTGAGCATCAGTCTGTG
 TACTGTGTCTCACCGTCGCGGAGGTTTGTGGATACCGGATAAAGCTTCACTTTGATGGGTATTCTGATT
 GCTATGACTTCTGGGTGAATGCAGACGCTCTGGATATCCACCCAGTTGGGTGGTGTGAGAAAAACGGCCA
 CAACTCCATCCTCCAAAAGGTATAAAGAAGAAGAAATCAATTGGCAGACCTATCTTAAGACATGTAAG
 GTATGAAGCTTGAGGCAGTAGACAAAAAGAATCCCTCATTATCTGTGTTGCTACGGTAACAGATGAGT
 GGACAATCGTTTCTGGTACATTTTGACAACCTGGGATGAGAGCTATGACTATTGGTGTGAAGCATCAAGT
 CCACATATTCATCCAGTTGGTTGGTGAAGGAACATAGAAGAACCCTTATTACTCCACCAGTTATCCAA
 ATGTGAAACATTTTTCTGGGATAAATACTTAGAAGAAACCAATCTTTACCTGCTCCTGCAAGAGCTTT
 CAAAGTGAACCTCCTCATGGATTCCAGAAAAAATGAAGCTTGAGGTTGTAGACAAAAGGAACCTATG
 TTTATTAGAGTAGCACTGTGGCAGACACAGATGATCACCGGTAAAAGTTCACTTTGATGGCTGGAACA
 ATTGCTATGATTACTGGATAGATGCAGATTCTCCTGATATCACCTGTAGGCTGGTGTCAAAAACAGG
 ACATCCCCTTCAGCCTCCTTTGAGCCCCTTAGAATTAATGGAAGCTTCAGAACATGGTGGATGCTCAACC
 CCGGGATGTAAGGGATTGGCCATTTCAAGAGAGCGAGACATCTGGGCCCTCACAGTGTGCCAACTGTC
 CCTATTCAGAAATCAATTTGAATAAAGACCGTATTTTTCCAGACCGCTTAAGTGGTGTGAGATGCCTCCGGC
 TAGTCCGTCATTTCCAAGAAATAAAGGACAGATGCAAATGAAAGCTCTTCTCCCTGAAATCAGAGAC
 CAGCATGCTGATGATGTCAAAGAAGACTTTGAAGAGAGAACAGAAAGTGAATGAGAACATCACATGAAG
 CCAGAGGTGCCCGGAAGAACCACCGTCCAGCAGGCACAGCGTCGGTACAGTGTCTTTCTGTCTTTAA
 GTCCCCAATTCATGTCTGCCCTTGGCGTGGGAGCAGCAAAGCAAACCTTCTTCAACTGTGCGAGGAATC
 CCTGCCAGTAAAGTTTCCAAATGGAGCACAGACGAGGTGTGAGAAATTTATACAGAGCTTACCTGGGTGTG
 AAGAACATGGAAGGTATTTAAAGATGAACAAATTTGATGGAGAAGCATTCTACTTATGACTCAAACAGA
 CATTGTTAAAATTATGAGCATTAAACTGGGCCCTGCTCTCAAAATTTCAATTCATCCTGATGTTCAA
 GCTGCAGAGAAGAATTCTACAATGAACCT

ACGCGTACGCGGCCGCTCGAG – GFP Tag – GTTTAA

Protein Sequence: >RG215097 representing NM_032438
 Red=Cloning site Green=Tags(s)

```

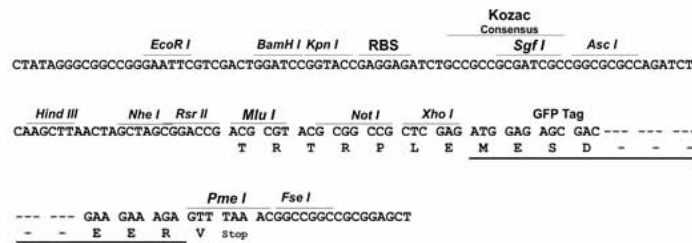
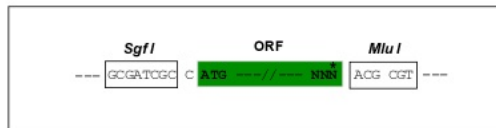
MTESASSTSGQEFDFVFSVMDWKDVGTLPGSDLKFRVNEFGALEVITDENEMENVKATATTTWMVPTAQ
EAPTSPSSRPVFPAYWTSPPGCPTVFSEKTGMPFRLKDPVKVEGLQFCENCCQYGNVDECLSGGNYCS
QNCARHIKDKDQKEERDVEEDNEEEDPKCSRKKKPKLSLKADTKEDGEERDDEMENKQDVRILRGSQRR
RKRRGDSAVLKQGLPPKGGKAWCWASYLEEEKAVAVPAKLFKEHQSFYKNGFVGMKLEGVDPHQSV
YCVLTVAEVCGYRIKLHFDGYSDCYDFWVNADALDIHPVGWCEKGTGKHLHPPKGYKEEFNWQTYLKTCK
AQAAPKSLFENQITVIPSGFRVGMKLEAVDKKNPSFICVATVTMDVNRFLVHFDNWDSEYDYWCEASS
PHIHPVGWCKEHRRTLITPPGYPNVKHFSWDKYLEETNSLPAPARAFKVKPPHGFQKKMKLEVVDKRNP
FIRVATVADTDDHRVKVHFDGWNNCYDYWIDADSPDIHPVGWCSKTGHPLQPPLSPELMEASEHGGCST
PGCKGIGHFKRARHLGPHSAANCPYSEINLNKDRIFPDRLSGEMPPASPSFPRNKRTDANESSSSPEIRD
QHADDVKEDFEERTESEMRTSHEARGAREEPTVQQAQRRAVFLSFKSPIPLRWEQQSKLLPTVAGI
PASKVSWSTDEVSEFIQSLPGCEEHGKVFKDEQIDGEAFLLMTQTDIVKIMSIKLGPAKIFNSILMFK
AAEKNSHNEL
  
```

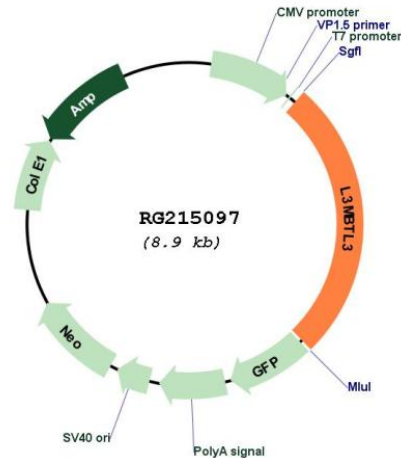
TRTRPLE - GFP Tag - V

Restriction Sites: SgfI-MluI

Cloning Scheme:

Cloning sites used for ORF Shuttling:



Plasmid Map:


ACCN: NM_032438

ORF Size: 2340 bp

OTI Disclaimer: The molecular sequence of this clone aligns with the gene accession number as a point of reference only. However, individual transcript sequences of the same gene can differ through naturally occurring variations (e.g. polymorphisms), each with its own valid existence. This clone is substantially in agreement with the reference, but a complete review of all prevailing variants is recommended prior to use. [More info](#)

OTI Annotation: This clone was engineered to express the complete ORF with an expression tag. Expression varies depending on the nature of the gene.

Components: The ORF clone is ion-exchange column purified and shipped in a 2D barcoded Matrix tube containing 10ug of transfection-ready, dried plasmid DNA (reconstitute with 100 ul of water).

Reconstitution Method:

1. Centrifuge at 5,000xg for 5min.
2. Carefully open the tube and add 100ul of sterile water to dissolve the DNA.
3. Close the tube and incubate for 10 minutes at room temperature.
4. Briefly vortex the tube and then do a quick spin (less than 5000xg) to concentrate the liquid at the bottom.
5. Store the suspended plasmid at -20°C. The DNA is stable for at least one year from date of shipping when stored at -20°C.

RefSeq: [NM_032438.4](#)

RefSeq Size: 4217 bp

RefSeq ORF: 2343 bp

Locus ID: 84456

UniProt ID: [Q96JM7](#)

Cytogenetics: 6q23.1

Gene Summary:

This gene encodes a member of the malignant brain tumor (MBT) family of chromatin interacting transcriptional repressors. Members of this family function as methyl-lysine readers, which recognize methylated lysine residues on histone protein tails, and are associated with the repression of gene expression. The encoded protein may regulate hematopoiesis. Homozygous deletion of this gene has been observed in human patients with medulloblastoma. [provided by RefSeq, Oct 2016]