

Product datasheet for **RG215089**

ENAM (NM_031889) Human Tagged ORF Clone

Product data:

Product Type:	Expression Plasmids
Product Name:	ENAM (NM_031889) Human Tagged ORF Clone
Tag:	TurboGFP
Symbol:	ENAM
Synonyms:	ADAI; AI1C; AIH2
Mammalian Cell Selection:	Neomycin
Vector:	pCMV6-AC-GFP (PS100010)
E. coli Selection:	Ampicillin (100 ug/mL)
ORF Nucleotide Sequence:	>RG215089 representing NM_031889 Red=Cloning site Blue=ORF Green=Tags(s)

TTTTGTAATACGACTCACTATAGGGCGGCCGGAATTCGTCGACTGGATCCGGTACCGAGGAGATCTGCC
GCC**CGATCGCC**

ATGTTGGTGCTTCGGTGCAGGCTTGAACCTCTTTTCTAACTAGATAACTTGGTACCAAAGGCCAAA
TGAAGATTCTCTGGTCTTTCTAGGGCTTCTGGTAATTCTGTTGCTATGCCAATGCACATGCCCGAAT
GCCTGGATTTAGCAGTAAAAGTGAGGAGATGATGCGGTATAATCAATTCACTTTATGAACGGCCACAT
ATGGCACACCTGGGGCCCTTCTTGAACCGGTCTCCCTCAGCAATTTCCACAGTACCAGATGCCCATGT
GGCCTCAGCCACCACCAACACATGGCATCCACGGAAATCCTCAGCACCCAAACGTCATAACAAGACTGA
TCAGACCCAAGAAACCCAGAAACCAACAGACTCAGTCAAAAAAGCCACCACAAAAGCGGCCTTTGAAG
CAGCCATCACATAATCAACCTCAGCCCGAAGAGGAAGCTCAACCCCTCAGGCATTTCCACCATTGGAA
ATGGGCTATTCCTATCAACAACCACCATGGCAAATTCACAGAGGTTACCACCACCAGGTTATGGACG
CCCACCAATCAGCAATGAAGAAGGGGGGAATCCTTACTTTGGATATTTGGATATCATGGCTTTGGGGGT
CGCCCTCCTTATTATTCAGAAGAAATGTTTGAACAAGATTTTGA AAAACCCAAAGAAGAAGATCCTCCTA
AAGCAGAAAGTCCAGGCACAGAACCACAGCTAATTCACAGTCACTGAGACGAATTCTACCAACCAAA
TCCTAAAGGGAGTCAGGGAGGAAATGACACCAGCCACAGGAAACAGTACCCAGGACTAAACTGGG
AACACCCCTTTCAGCTCGAAATGGGATTGGCCACTCCCTGCAGTCAACGTTTCAGCCAGGGAGGGCCAG
GAAGTCAAATCCCATGGAGACCAAGTCAGCCAAATATTCTGTAATAATCATCCATATCCTAATAAAGAAA
TTTTCTTCAGGAAGACAGTGGTATTTCTACTGGTACTGTGATGGGGCACAGACAGAAATAGCCCTTTTAC
AGAAATCAACAAGTTCAAAGGGTCTCGGTGGAACCTCTTTGCTTGGGAACGTAACAAGTAGCTCGTC
CAGGAAATCCAGTTTATCACAAGCTTACCCTCTACTTCAAGAGGCAATTATCCCAATTATGCAGGAAA
TCCAGCAAATCTCAGAAGAAAGCCTCAGGGCCAAATAAACACCCGTAGGAACTACTGTTGCCCACTG
GGTCCCAAACCTGGCCCTGTTGTTGCGAATGAAAAATCCAAAATCCAAAGGAGAAGCCCTGGGTCCAA
AAGAACAATAATAGTTCTACAAGAATCCAACCAGCCCTGGAGAACTCTCAACAGTATGAAGTTAA
TAAATCAAATTAAACTGCCTCACTCTGAGGGTTATATGCCAGTCCCAAATTTAATTCTGTTGATCAA



CATGAAAACCTCTATTACCCAAGAGGAGATTCCAGAAAAGTCCCAAATCTGATGGACAAACCCAAAGCC
 AGAATTTGCCAAAGGGATTGTTTTAGGGTCAAGAAGGATGCCATATGAATCAGAACTAATCAGTCAGA
 ATTAAGCACAGCTCATATCAGCCTGCTGTATACCCTGAGGAAATCCCTTCTCCTGCAAAAAGAACATTTT
 CCTGCTGGAAGAAATACTTGGGACCACCAAGAAATCTCTCCACCTTTTAAAGGAAGATCCAGGGAGGCAAG
 AAGAACATTTACCCATCCTTCCCATGGTCTAGAGGAAGTGTCTTACCCTGAATATAACCCATATGA
 TCCCAGGAAAACTCACCATACCTTAGAGGCAATACATGGGATGAGAGAGATGTTTCCCAATACTATG
 GGGCAAAAAGAAAGTCCACTTACCCATAAAATACCCAGACCAGAAGGAGATAGTCCCTATAATGAAG
 AGGACCCAGTTGATCCAAGTGGAGATGAAGTCTTCTGGACAAAATAGATGGGGTGAAGAGTTGAGCTT
 CAAAGGAGGCCAACAGTTAGGCACTATGAAGGTGAACAATATACCTCAAATCAGCCAAAGGAATATCTT
 CCCTATTCTTTAGATAATCCATCAAACCAAGGGAGGATTTTTATTACAGTGAATTTTACCATGGAGCC
 CGGATGAGAAATTTCCATCATATAATACAGCTTCTACTATGCCACCACCTATAGAGAGCAGGGGCTACTA
 CGTTAATAATGCCGCTGGACCAGAAGAAAGCACTCTATTTCTTACGGAATTCCTGGGACCACAGGATA
 CAAGCCAAAGGGCAGAGAGAAAGAAGGCCGATTTTTAACAGAAATATCTGGGATCAGGCAACACATTTAC
 AAAAGCCCCAGCTAGGCCACCAGACCAGAAAGGTAACCGCCCTATTACAGTAACCCCCAGCTGGGCT
 TCAGAAAATCCAATATGGCATGAAGGTGAGAATTTGAACTATGGCATGCAAATAACTAGGATGAATTTCT
 CCAGAGAGAGAACATTCTTTCCCTAACTTCACTCCCAAGTTACCCATCAGGTCAAAAAGGAAGCAC
 ATTTATTTTACCTAAGCCAGAGAGGCTCTTGTGTGCTGGTAGCTCCACAGGGCCCAAGGACAATCCACT
 AGCTCTACAAGACTACACTCCATCCTATGGTCTTGACCTGGGGAGAACCAAGACACCAGTCTCTGTAT
 ACAGACGGTAGTCATACCAAGCAGACAAGAGATATCATCTCCCAACAAGCATCTACCAGGCCAAAGAA
 ACAGCTCAGAGAAGAGGGAAAGCCAAAACCTTTTAGAGATGGTGTGCCACGCTGAGGAGGAACACACC
 ATGTTCTATAAAGAATCAACTGGGCCAAAAGGAAATATGCCCTTCTGAAAGCCAGTTCCTTCAATCA
 AAGAATACACCTTGTCTCAAAAATGATCTTGGAGGAGATGGGAACAACATTCTGGAACAAGTTTTGAAG
 ACAACCGCTCAATGAAAGAAGCTGTTGACCTTACTCCTGAGCAGCTTGTATTGGTACACTGATGAAGG
 CTCCAATCCAGAAGGCATCCAAAGTCAAGTCCAAGAAAATGAGAGTGAGAGGCAACAGCAAAGACCATCT
 AACATTCTGCATTTGCCATGCTTTGGCTCCAAATTAGCAAAGCATCACTTCCACCACCGGAACTCCAT
 CTAGCGATGGAAGGCAAAGCCATTTGATGGGGATTCAATTACGCCTACTGAAAATCCTAACACATTGGT
 TGAGTTAGCTACTGAGGAACAATTAAGAGTATAAATGTAGACCCACTTGATGCAGATGAACACAGTCCA
 TTTGAATTCCTTCAAAGAGGGACCAATGTACAGGACCAGGTACAAGACTGCTTACTACTTCAGGCC

ACGCGTACGCGGCCGCTCGAG – GFP Tag – GTTTAA

Protein Sequence:

>RG215089 representing NM_031889
 Red=Cloning site Green=Tags(s)

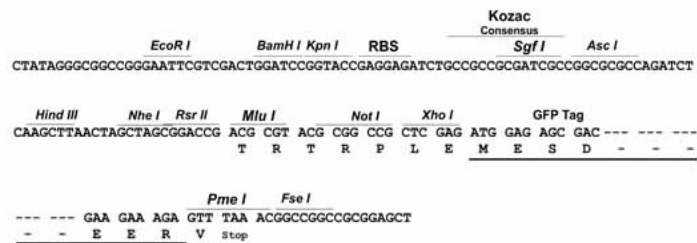
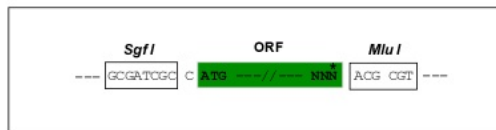
MLVLRCLRGTSFPKLDNLVPGKGMKILLVFLGLLGNSVAMPMHMPRMPGFSSKSEEMRYNQFNFMMNGPH
 MAHLGPFVFNGLPQQFPQYQMPMWPQPPPNTWHPKSSAPKRHNKTDQTQETQKPNQTSKKPPQKRPLK
 QPSHNQPPQPEEEAQPQAFPPFNGLFPYQPPWQIPQRLPPPGYGRPPI SNEEGNPFYGYFGYHGF
 RPPYYSEEMFEQDFEKPKEEDPPKAESPTEPTANSTVTEETNSTQPNPKGSQGGNDTSPGNSTPGLNTG
 NNPSARNGI GPLPAVNASGQGGPGSQIPWRPSQPNIRENHPYPNIRNFP SGRQWYFTGTVMGHRQNRPFY
 RNQQVQRGPRWNFFAWERKQVARPGNPVYHKAYPPTSRGNYPNYAGNPANLRRKPQGNKHPVGTTVAPL
 GPKPGPVVRNEKI QNPKEKPLGPKQIIVPTKNPTSPWRNSQYEVNKSNYKLPHSEGYMPVNFNSVDQ
 HENSYYPRGDSRKYVPNSDQTSQNLPKGIVLGSRRMPYESETNQSELKHSSYQPAVYPEEIPSPAKEHF
 PAGRNTWDHQEISPPFKEDPGRQEEHLPHPSHGSRGSVFYPEYNPYDPRENSPYLRGNTWDERDDSPNTM
 GQKESPLYINTPDQKEIVPYNEEDPVDPDTEVDFPGQNRWGEELSFKGGPTVRHYEGEYTSNPQKEYL
 PYSLDNPSKPREDFYSEFYWPSPDENFPSYNTASTMPPPIESRGYYVNAAGPEESTLFP SRNSWDHRI
 QAQGRERRRPFYFNRIWDQATHLQKAPARPPDQKGNQPYYSNTPAGLQKNPIWHEGENLNYGMQITRMNS
 PEREHSFPNFI PPSYPSGQKEAHLFHL SQRGSCCAGSSTGPKDNPLALQDYTPSYGLAPGENQDTSPLY
 TDGSHTKQTRDII SPTSILPGQRNSSEKRESQNPFRDGVSTLRRNTPCSIKNQLGQKEIMPFPEASSLQS
 KNTPLKNDLGGDGNILEQVFEDNQLNERTVDLTPEQLVIGTPDEGSNPEGIQSQVQENESERQQQRPS
 NILHLPCFGSKLAKHHSSTGTSPSSDRQSPFDGDSITPTENPNTLVELATEEQFKSINVDPLDADEHSP
 FEFLQRGTNVQDQVQDCLLLQA

TRTRPLE – GFP Tag – V

Restriction Sites: SgfI-MluI

Cloning Scheme:

Cloning sites used for ORF Shuttling:



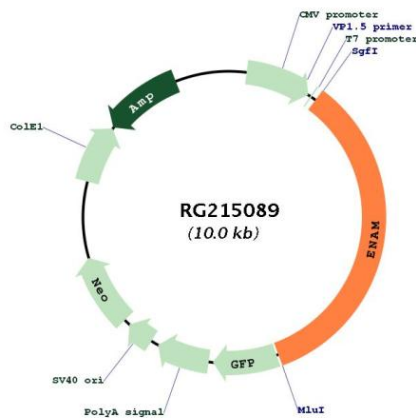
ACCN: NM_031889

ORF Size: 3426 bp

OTI Disclaimer: The molecular sequence of this clone aligns with the gene accession number as a point of reference only. However, individual transcript sequences of the same gene can differ through naturally occurring variations (e.g. polymorphisms), each with its own valid existence. This clone is substantially in agreement with the reference, but a complete review of all prevailing variants is recommended prior to use. [More info](#)

OTI Annotation:	This clone was engineered to express the complete ORF with an expression tag. Expression varies depending on the nature of the gene.
Components:	The ORF clone is ion-exchange column purified and shipped in a 2D barcoded Matrix tube containing 10ug of transfection-ready, dried plasmid DNA (reconstitute with 100 ul of water).
Reconstitution Method:	<ol style="list-style-type: none"> 1. Centrifuge at 5,000xg for 5min. 2. Carefully open the tube and add 100ul of sterile water to dissolve the DNA. 3. Close the tube and incubate for 10 minutes at room temperature. 4. Briefly vortex the tube and then do a quick spin (less than 5000xg) to concentrate the liquid at the bottom. 5. Store the suspended plasmid at -20°C. The DNA is stable for at least one year from date of shipping when stored at -20°C.
RefSeq:	<u>NM_031889.1</u> , <u>NP_114095.1</u>
RefSeq Size:	5674 bp
RefSeq ORF:	3429 bp
Locus ID:	10117
UniProt ID:	<u>Q9NRM1</u>
Cytogenetics:	4q13.3
Protein Families:	Secreted Protein
Gene Summary:	Dental enamel forms the outer cap of teeth and is the hardest substance found in vertebrates. This gene encodes the largest protein in the enamel matrix of developing teeth. The protein is involved in the mineralization and structural organization of enamel. Defects in this gene result in amelogenesis imperfect type 1C.[provided by RefSeq, Oct 2009]

Product images:



Circular map for RG215089