

Product datasheet for **RG215077**

IGSF22 (NM_173588) Human Tagged ORF Clone

Product data:

Product Type:	Expression Plasmids
Product Name:	IGSF22 (NM_173588) Human Tagged ORF Clone
Tag:	TurboGFP
Symbol:	IGSF22
Synonyms:	IGFN2
Mammalian Cell Selection:	Neomycin
Vector:	pCMV6-AC-GFP (PS100010)
E. coli Selection:	Ampicillin (100 ug/mL)
ORF Nucleotide Sequence:	>RG215077 representing NM_173588 Red=Cloning site Blue=ORF Green=Tags(s)

TTTTGTAATACGACTCACTATAGGGCGGCCGGAATTCGTCGACTGGATCCGGTACCGAGGAGATCTGCC
GCC**CGATCGCC**

ATGACAACCATTACAGCCGGCAGATGCTGCAGGAGCACGTGCCATGGAGTTCTCCAGCTCCACCACC
ACGTGCAGACCTTCTCCAGACAACCAAGATCGTGGGAGAGGAGGTCTGAGGAGGAAGTCTCGAGCAT
AGTGGAGTTCTCAGCTTAGTGACCCGGAGCTCAAACATCCCTGCGGGCGACAGCGTCCCTGAGTTCGTG
GAGAAGCCTCAACCGGTACCCGCCCGAGGGGACAAAGCCGTGTTCCGAGCCCGGTGCAGGGGAACG
CCAAACCCACATCTCCTGGAAGAGGGAGAGCGGCATCCCATCAAGGAGTCCGCCAAGATATTCTACGA
CAGCATTAAACAAGGAACACGTGCTGAAGCTGGAGCCACTGACTTCGGATGACTCTGACAACATAAGTGC
ATTGCAAGCAATGACCATGCAGATGCCATCTATACCGTATCTCTGCTGTTAACAGAAAGTCAAGAGAAAA
TGGACTTCAAAAAGATGCTGAAGAAGAGGGCACCCCTGCTCCCAAGAAGAAGCAGAAGAAGGTGGCAAA
TGAGAAAGAGATGCTGGAGATTTTGTCCAAAGTGCCCAAGAAAGACTTTGAGAAGGTGTGCATGGAGTAT
GGTTTCACCGACTTTCGGGGGCTGCTCAGGAAGCTCAAAGAGATGAAGAAGAAAGTAGAGGTGGAGGCCA
TCCGGATTCTGAAGCCCTGGAAGACAAAGAGACCAAGGTTGACACCACAGTGGTCTTTGACTGCATAAT
GGAAGTAAAGACCCCAATGTCAAGATGATATGGATCAAGGTTACTGAGCCACTGAGGATCCAGTACTCC
CTGGCAAGTACGATGTGAAGCAGATGGGCACCAAGTACATGCTGTTATTAGCAACGTGAACATGAACG
ATGCTGGCATCTACAGCCTGTCCGTGGGCGATAAGCGGATGAGTGCAGAGCTCACAGTGTGATGAGCC
ACTGAAGTTCTGGGAGAGATGAAGCCTGTGAAGGTGACAGAGGCCAGACAGCTGTGTTTGAGATCCGC
CTCTCCAAGAAAGAGCCCAACTTTGTGTGGAAGTTCAATGGGAAGGAGCTGAAGAGGGATGACAAGTATG
AAATCACGGTGTCCGAAGATGGTCTGACGCACACGCTTAAGATTAAGGATGCCAGACTCAGTGACAGCGG
CGAGTTCTCTGCTGAGGCGGGGAACCTGGTACAAAAGGCCAGCTCACTATTGACCCGATCCCCATCAAG
TTTGTGAGCAACCTCAAAAATGTACGTGTGAAAGAGAGGAGTCCGCGATGCCTGGAGTGTGAGCTGACAT
CCAAGGATGTGACTGCGCTGGAAGAAGGATGGGCAGCTGCTGATGCATGGCACTAAGTACAGCATGAA
CCATGAGGCAAGCGAGCAGAGCTGATCATTGAGGATGCACAGCTCAGTATGGTGGCAGTACACTGTG



[View online »](#)

GTGGCCATGCAGGATGGAGACCCTACTGAATACTACAGTACTGCCATCGTCACTGTGGAGGAGCGTCTGG
CCACAGTGAAGAGCGGGATGTCCGACGTGCACGCGGCCACTGGGAGCCCAGCTGAGTTGTGTGTAGTGTCT
GAATGACGAGAAGGTGGAGGGTGTGTGGCTGAAGGATGGCAAGGAGATCACGGACTTGCCAGGCATGCAG
ATTGTGAAGCAGGGTGCAGTGCACAAGCTCATCTTTCCAGTATGGGCCCTGAGCACGAGGGCAAGTACA
CATTCCGGGCCAAGGGCACGGAAAGTGAAGCCTCTGTATTCATCGCAGATCCTCCTACCATCGACCCGTC
AGTACTGGAGGCACTGGCTGCGCACGCCATCACTGTGAAGGTAGCCACACGCGCCACATCAAGGTCCCC
TTCCGGGAAAACCACTGCCAAAAGTGACATGGTACAAGGATGGCATGGAAGTGACGGAGGAGGAACGCG
TGTCCATGGAGCGGGGAAGACCAGGCACTGCTCACCATCTCCAAGTGTGTGCGTGAAGACAGCGGCCT
CATCCTGTCTAAGCTCAAGAATGACCACGGCTCAGCCACGCGCACTCTGCACCTTAGTGTCTGGACCGT
CCAAAAGCTCCACAGGGCCGGTGGAGTTCCTGGAGCTCTCAGGTAGTTGTGTGCACATGAAGTGAAGG
CCCCAAAGGACAATGGTGGACGACCTGTGACACAGTTCATAGTGAACGGAGGGCAGTTGGCAAGAAGTC
CTGGATTAAGATAGGCGAGGTGGACGGCAAAGTACCAACTTCTCCACCAACAAGGTGGAAGAGGGAAAA
GCCTACCAGTTCCGTATCCTGGCAGTCAATTGAGAAGGTGTGAGTGACCCACTGGAGACAGAAGAAGTGT
TTGCAGGAAATCCATAGAGCCTCCTGGTTTTGCCTCCAGCCTCAAGTACTGATGTGACTAAAGAAGC
CGTGACCATCACGTGGAATGCCCTACCCAGGATGGGGGAGCCCCAGTGTCTCGGCTACATTTAGAACGA
AGGAAGAAAGGCAGCAACCTGTGGGTGCCAGTCAACAAGGACCCCATCCAGGGCACAAGTGCACGTGG
ATGGTCTCCTGGAGGACACAGAATATGAATTCGAGTTATAGCTGTAAATTAAGGCAGGCCCTGGACAGCC
CAGTGTGCCATCCAGCTCAGTAGTGGCCAAAGTCTGTAAACCCCGAGCCTGGTCCAGGACCTGCAT
GTATCTGATTCTCCAACCTCCAGCATTTCCCTGGCCTGGCGGGAGCCTGCAGAGGGAGACCCACCCTCTG
GCTACATCCTTGAGATGAGGGCTGAAGACACAAAGGAGTGGTCCAAGTGCACAAAGATCCCCATCTCAGG
CACCTGCTACACAGTGGGAGGACTCATCGAGAGGCAGAAATACTTCTCCGAATCCGGGCTGTGAATGAG
GCTGGGGTTGGGGAGCCTGTGGAGCTAGACAAGGGGTCCTGCCATGCCACCACCAGCTGCACCCAAGT
TTGACCTCAGTGCCCGGCTGAAGAGTACATGGTGGTTCCGCTGGGACAGCCCTCTGCATCCATGCAGC
CTTCTCTGGCTCACCACCACCTGACGTGATCTGGCAGAAAGATGGCGTTCCACCAAGGGCCGAGAGACA
ATTACCAAGAGCAAAAACCACTCCAGTTCTCATTAAATAGCACCAAGCGCTCTGACTCAGGGGTGTACC
GAATCTTGCTTCAGAATGAGTTTGGAGAAGCACGCTATGACATCCATGTGCGCGTGGCAGATTTCCCTCG
GCCCCCACAACCTACGGTTGTTTGGGAAGTCCCCAACACAGTACTCTGACCTGGAACCACAGCCCA
GATGTGCAGGAGGACGGTGGGCTCACTACATCATGAAGCGGGATGCAAGCACAGCCACCTGGTACA
CGGCAGCCGAGCGTGTCTCAGCAACAAGTACACAGTACGCGGGCTGCTCCAGGCAGGAAGTACTACTT
CAGAGTGGTGGCTCGGAATGAAATCGGTGACAGTACGCACTTACTCCAGGGACACCTGGCTCATCAAT
AAGGACCAGATCCAGGACCTGAGCGCAAGCTCAAGCCCTACGAGAAGAAGGACTGGCGCCACGCGCCG
GCTTCGTGACGCCCTCAAGCCACACCGTGTCCGCGGCCAGGACTGCACCATGACCTGCGCCTTCTCT
TGGGAACCCGCGGCCACAGTGACCCTCTACAAGGGCGACGTCAACATCACGGCCAACTCCAAGTTCTGG
TACAACTCCACCAGCGCGTGTGACCCCTGTGATCCCCACCTGCACGCTCAAGGACAGCGGCGATTACA
GCGTGTGGTGGAGAACGAGCTGGGCAAGGACCGCAGCAGCTGCACGCTCACCGTCTATGACAAAGATGA
TAAGTCAGTTGTAGCATCCATCACCGAGAGTCTGCAGAAGAAATCAAAGCACCTCATG

AGCGGACCGACGCGTACGCGGCCGCTCGAG - GFP Tag - GTTTAA

Protein Sequence: >RG215077 representing NM_173588
 Red=Cloning site Green=Tags(s)

MTTIHSRQMLQEHSVMEFSSSTTHVQTFSTTKIVGEEVRRKSSSIVEFFSLVTRSSNIPAGDSVPEFV
 EKPQPVTAPEGDKAVFRARVQGNAPKPHISWKRESGIPIKESAKIFYDSINKEHVLKLEPLTSDSDNYKC
 IASNDHADAIYTVSLLVTEGQEKMDFFKMLKKRAPPAPKKKQKKVANEKEMLEILSKVPKKDFEKCMEY
 GFTDFRGLLRKLEKEMKKKVEVEAIRILKPLEDKETKVDTTVVFDCEMELKDPNVKMIWIKGTEPLRIQYS
 LGKYDVKQMGTKYMLVISNVNMNDAGIYLSVGDKRMSAELTVLDEPLKFLGEMKPVKVTERRQTAVFEIR
 LSKKEPNFVWKFNGKELKRDDKYEITVSEDGLTHTLKIKDARLSDSGEFSAEAGNLVQKAQLTIDRIPIK
 FVSNLKNVRVKERSRACLECELTSKDVTLRWKKDQQLLMHGTYSMNHEGKRAELIIEDAQLSDGGEYTV
 VAMQDGDPTTEYYSTAIIVTEERLATVKSMSDVHAATGSPAELCVLNDKVEGVWLKDGKEITDLPGMQ
 IVKQGAHVHKLIFPSMGPEHEGKYTFRAKGTSEASVFIADPPTIDPSVLEALAAHAITVKVGHTAHIKVP
 FRGKPLPKVTWYKDGMEVTEEERVSMEGEDQALLTISNCVREDSGLILLKLNKDHGSATATLHLSVLDL
 PKPPQGRVFELELSGSCVHMWKAPKDNGRPTQFIVERAVGKKSUIKIGEVGKVTNFSTNKVEEGK
 AYQFRILAVNSEGVSDPLETEEVFAGNPIEPPGFASQPQVTDVTKEAVTITWNAPTQDGGAPVLGYIVER
 RKKGSNLWVPVNDPIQGTCTVDGLLEDETEYEFRIAVNKAGPGQSPVSSSVVAKDPVKPPGLVQDLH
 VSDSSNSSISLAWREPAEGDPPSGYILEMRAEDTKEWSKCTKIPIISGTCYTVGGLIERQKYFFRIRAVNE
 AGVGPEVELDKGVRAMPPPAAPKFDLSARLKSHMVVRAGTALCIHAAFSGSPPDVWQKDGVPKGTRET
 ITKSKNHSQFLINSTKRSDSGVYRILLQNEFGEARYDIHVRVADFPRPPTNLRLFEEVNTVTLTWNHSP
 DVQEDGEAHIYIIMKRDASTATWYTAERVFSNKYVTGLLPGRKYFRVVARNEIGDSEPLDSRDTWLIN
 KDQIQDLSAKLPYEKKDWRHAPRFVTLKPHTVLRGQDCTMTC AFLGNRPTVTLYKGDVNITANSKFW
 YNSTSGVCTLVIPTCTLKDSGDYSVLVENELGDRSSCTLTVYDKDDKSVVASITSLQKKSKHLM

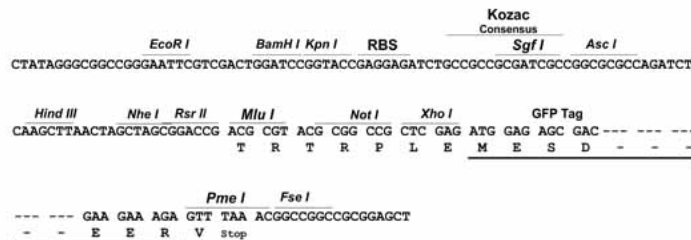
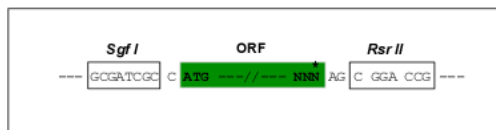
SGPTRRRLE - GFP Tag - V

Restriction Sites:

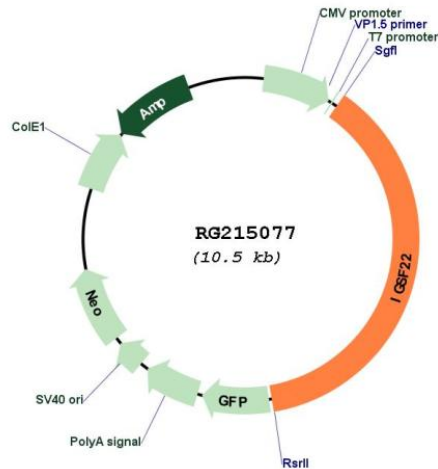
SgfI-RsrII

Cloning Scheme:

Cloning sites used for ORF Shuttling:



Plasmid Map:



ACCN: NM_173588

ORF Size: 3978 bp

OTI Disclaimer: Due to the inherent nature of this plasmid, standard methods to replicate additional amounts of DNA in *E. coli* are highly likely to result in mutations and/or rearrangements. Therefore, OriGene does not guarantee the capability to replicate this plasmid DNA. Additional amounts of DNA can be purchased from OriGene with batch-specific, full-sequence verification at a reduced cost. Please contact our customer care team at custsupport@origene.com or by calling 301.340.3188 option 3 for pricing and delivery.

The molecular sequence of this clone aligns with the gene accession number as a point of reference only. However, individual transcript sequences of the same gene can differ through naturally occurring variations (e.g. polymorphisms), each with its own valid existence. This clone is substantially in agreement with the reference, but a complete review of all prevailing variants is recommended prior to use. [More info](#)

OTI Annotation: This clone was engineered to express the complete ORF with an expression tag. Expression varies depending on the nature of the gene.

Components: The ORF clone is ion-exchange column purified and shipped in a 2D barcoded Matrix tube containing 10ug of transfection-ready, dried plasmid DNA (reconstitute with 100 ul of water).

Reconstitution Method:

1. Centrifuge at 5,000xg for 5min.
2. Carefully open the tube and add 100ul of sterile water to dissolve the DNA.
3. Close the tube and incubate for 10 minutes at room temperature.
4. Briefly vortex the tube and then do a quick spin (less than 5000xg) to concentrate the liquid at the bottom.
5. Store the suspended plasmid at -20°C. The DNA is stable for at least one year from date of shipping when stored at -20°C.

RefSeq: [NM_173588.3](#), [NP_775859.3](#)
RefSeq Size: 4360 bp
RefSeq ORF: 3981 bp
Locus ID: 283284
UniProt ID: [Q8N9C0](#)
Cytogenetics: 11p15.1