

Product datasheet for **RG215074**

Amylin (IAPP) (NM_000415) Human Tagged ORF Clone

Product data:

Product Type: Expression Plasmids
Product Name: Amylin (IAPP) (NM_000415) Human Tagged ORF Clone
Tag: TurboGFP
Symbol: Amylin
Synonyms: DAP; IAP
Mammalian Cell Selection: Neomycin
Vector: pCMV6-AC-GFP (PS100010)
E. coli Selection: Ampicillin (100 ug/mL)
ORF Nucleotide Sequence: >RG215074 representing NM_000415
Red=Cloning site Blue=ORF Green=Tags(s)

TTTTGTAATACGACTCACTATAGGGCGGCCGGAATTCGTCGACTGGATCCGGTACCGAGGAGATCTGCC
GCC**CGATCGCC**

ATGGGCATCCTGAAGCTGCAAGTATTTCTATTGTGCTCTCTGTTGCATTGAACCATCTGAAAGCTACAC
CCATTGAAAGTCATCAGGTGGAAAAGCGGAAATGCAACACTGCCACATGTGCAACGCAGCGCCTGGCAA
TTTTTTAGTTCATTCCAGCAACAACCTTTGGTGCCATTCTCTCATCTACCAACGTGGGATCCAATACATAT
GGCAAGAGGAATGCAGTAGAGGTTTTAAAGAGAGAGCCACTGAATTACTTGCCCTT

ACGCGTACGCGGCCGCTCGAG - GFP Tag - GTTTAA

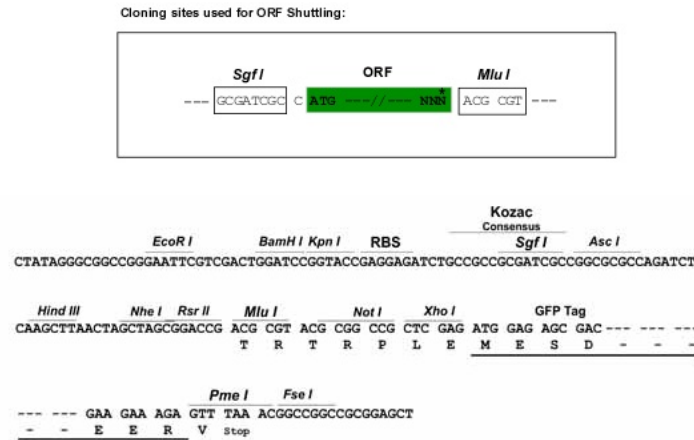
Protein Sequence: >RG215074 representing NM_000415
Red=Cloning site Green=Tags(s)
MGILKLQVFLIVLSVALNHLKATPIESHQVEKRCNTATCATQRLANFLVHSSNFGAILSSTNVGSNTY
GKRNAVEVLKREPLNYLPL

TRTRPLE - GFP Tag - V

Restriction Sites: Sgfl-MluI



[View online »](#)

Cloning Scheme:


ACCN: NM_000415

ORF Size: 267 bp

OTI Disclaimer: The molecular sequence of this clone aligns with the gene accession number as a point of reference only. However, individual transcript sequences of the same gene can differ through naturally occurring variations (e.g. polymorphisms), each with its own valid existence. This clone is substantially in agreement with the reference, but a complete review of all prevailing variants is recommended prior to use. [More info](#)

OTI Annotation: This clone was engineered to express the complete ORF with an expression tag. Expression varies depending on the nature of the gene.

Components: The ORF clone is ion-exchange column purified and shipped in a 2D barcoded Matrix tube containing 10ug of transfection-ready, dried plasmid DNA (reconstitute with 100 ul of water).

Reconstitution Method:

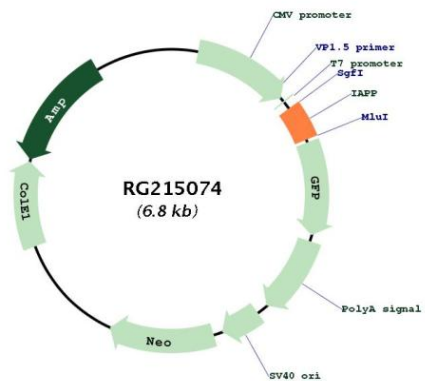
1. Centrifuge at 5,000xg for 5min.
2. Carefully open the tube and add 100ul of sterile water to dissolve the DNA.
3. Close the tube and incubate for 10 minutes at room temperature.
4. Briefly vortex the tube and then do a quick spin (less than 5000xg) to concentrate the liquid at the bottom.
5. Store the suspended plasmid at -20°C. The DNA is stable for at least one year from date of shipping when stored at -20°C.

RefSeq: [NM_000415.3](#)

RefSeq Size: 1462 bp

RefSeq ORF:	270 bp
Locus ID:	3375
UniProt ID:	P10997
Cytogenetics:	12p12.1
Protein Families:	Druggable Genome, Secreted Protein
Protein Pathways:	Maturity onset diabetes of the young
Gene Summary:	This gene encodes a member of the calcitonin family of peptide hormones. This hormone is released from pancreatic beta cells following food intake to regulate blood glucose levels and act as a satiation signal. Human patients with type 1 and advanced type 2 diabetes exhibit reduced levels of the encoded hormone in blood and pancreas. This protein also exhibits a bactericidal, antimicrobial activity. [provided by RefSeq, Jul 2016]

Product images:



Circular map for RG215074