

Product datasheet for **RG215069**

Complement C3 (C3) (NM_000064) Human Tagged ORF Clone

Product data:

Product Type:	Expression Plasmids
Product Name:	Complement C3 (C3) (NM_000064) Human Tagged ORF Clone
Tag:	TurboGFP
Symbol:	Complement C3
Synonyms:	AHUS5; ARMD9; ASP; C3a; C3b; CPAMD1; HEL-S-62p
Mammalian Cell Selection:	Neomycin
Vector:	pCMV6-AC-GFP (PS100010)
E. coli Selection:	Ampicillin (100 ug/mL)
ORF Nucleotide Sequence:	>RG215069 representing NM_000064 Red=Cloning site Blue=ORF Green=Tags(s)

TTTTGTAATACGACTCACTATAGGGCGGCCGGAATTCGTCGACTGGATCCGGTACCGAGGAGATCTGCC
GCC**CGATCGCC**

ATGGGACCCACCTCAGGTCCCAGCCTGCTGCTCCTGCTACTAACCCACCTCCCCCTGGCTCTGGGGAGTC
CCATGTACTCTATCATCACCCCAACATCTTGC GGCTGGAGAGCGAGGAGACCATGGTGTGGAGGCCCA
CGACGCGCAAGGGGATGTTCCAGTCACTGTTACTGTCCACGACTTCCCAGGCAAAAACTAGTGTCTGCC
AGTGAGAAGACTGTGCTGACCCCTGCCACCAACCATGGCAACGTACCTTCACGATCCCAGCCAACA
GGGAGTTCAGTCAAGAAAGGGGCGCAACAAGTTCGTGACCGTGCAGGCCACCTTCGGGACCAAGTGGT
GGAGAAGGTGGTGTGGTCAAGCCTGCAGAGCGGGTACCTTTCATCCAGACAGACAAGACCATCTACACC
CCTGGCTCCACAGTTCTCTATCGGATCTTCACCGTCAACCACAAGCTGCTACCCGTGGGCGGACGGTCA
TGGTCAACATTGAGAACCCGGAAGGCATCCCGGTCAAGCAGGACTCCTTGTCTTCTCAGAACCAGCTTGG
CGTCTTGGCCCTTGTCTTGGGACATTCGGAACTCGTCAACATGGGCCAGTGAAGATCCGAGCCTACTAT
GAAAACCTACCACAGCAGGTCTTCTCCACTGAGTTTGAGGTGAAGGAGTACGTGCTGCCAGTTTCGAGG
TCATAGTGGAGCCTACAGAGAAATTCTACTACATCTATAACGAGAAGGGCCTGGAGGTACCATCACCGC
CAGGTTCCCTACGGGAAGAAAGTGGAGGAACTGCCTTTGTATCTTCGGGATCCAGGATGGCGAACAG
AGGATTTCCCTGCCTGAATCCCTCAAGCGCATTCGATTGAGGATGGCTCGGGGAGGTTGTGCTGAGCC
GGAAGGTACTGCTGGACGGGTGCAGAACCTCCGAGCAGAAGACCTGGTGGGAAGTCTTTGTACGTGTC
TGCCACCGTCATCTTGCACTCAGGCAGTGACATGGTGCAGGCAGAGCGCAGCGGGATCCCATCGTGACC
TCTCCCTACCAGATCCACTTCACCAAGACACCCAAAGTACTTCAAACCAGGAATGCCCTTTGACCTCATGG
TGTTTCGTGACGAACCTGATGGCTCTCCAGCCTACCGAGTCCCGTGGCAGTCCAGGGCGAGGACTGT
GCAGTCTTAACCCAGGGAGATGGCGTGGCCAACTCAGCATCAACACACACCCAGCCAGAAGCCCTTG
AGCATCACGGTGCACGAAGAAGCAGGAGCTCTCGGAGGCAGAGCAGGCTACCAGGACCATGCAGGCTC
TGCCCTACAGCACCGTGGCAACTCCAACAATTACCTGCATCTCTCAGTGCTACGTACAGAGCTCAGACC
CGGGGAGACCCTCAACGTCAACTTCTCCTGCGAATGGACCGCGCCACGAGGCCAAGATCCGCTACTAC



[View online »](#)

ACCTACCTGATCATGAACAAGGGCAGGCTGTTGAAGGCGGGACGCCAGGTGCGAGAGCCCGCCAGGACC
 TGGTGGTGTGCCCTGTCCATCACCACCGACTTCATCCCTTCCCTCCGCTGGTGGCGTACTACACGCT
 GATCGGTGCCAGCGGCCAGAGGGAGGTGGTGGCCGACTCCGTGTGGTGGACGTCAAGGACTCCTGCGTG
 GGCTCGCTGGTGGTAAAAAGCGGCCAGTCAAGAACCGGCAGCCTGTACCTGGGCAGCAGATGACCTGA
 AGATAGAGGGTGACCACGGGGCCCGGTGGTACTGGTGGCCGTGGACAAGGGCGTGTTCGTGCTGAATAA
 GAAGAACAACCTGACGCAGAGTAAGATCTGGGACGTGGTGGAGAAGGCAGACATCGGCTGCACCCCGGC
 AGTGGGAAGGATTACGCCGTGTCTTCTCCGACGCAGGGCTGACCTTCAGCAGCAGCAGTGGCCAGCAGA
 CCGCCCAGAGGGCAGAACTTCAGTGCCCCAGCCAGCCGCCCGCAGCCGTTCCGTGCAGCTCACGGA
 GAAGCGAATGGACAAAGTCGGCAAGTACCCCAAGGAGCTGCGCAAGTGTGCGAGGACGGCATGCGGGAG
 AACCCCATGAGGTTCTCGTGCCAGCGCCGACCCGTTTTCATCTCCCTGGGCGAGGCGTCAAGAAGGTCT
 TCCTGGACTGCTGCAACTACATCACAGAGCTGCGGCGGCAGCACGCGGGCCAGCCACCTGGGCTGGC
 CAGGAGTAACCTGGATGAGGACATCATTGCAGAAGAGAACATCGTTTCCCGAAGTGAGTCCAGAGAGC
 TGGCTGTGGAACGTTGAGGACTTGAAGAGCCACCGAAAATGGAATCTCTACGAAGCTCATGAATATAT
 TTTTGAAGACTCCATCACCACGTGGGAGATTCTGGCTGTGAGCATGTGCGACAAGAAAGGGATCTGTGT
 GGCAGACCCCTTCGAGGTACAGTAATGCAGGACTTCTTCATCGACTGCGGCTACCTACTCTGTTGTT
 CGAAACGAGCAGGTGGAATCCGAGCCGTTCTCTACAATTACCGCAGAACCAAGAGCTCAAGGTGAGGG
 TGGAACTACTCCACAATCCAGCCTTCTGCAAGCTGGCCACCACCAAGAGGCGTCAACAGCAGACCGTAAC
 CATCCCCCAAGTCTCGTTGTCCGTTCCATATGTATCGTGCCGCTAAAGACCGGCTGCAGGAAGTG
 GAAGTCAAGGCTGCCGTACCATCATTTCATCAGTGACGGTGTGAGGAAGTCCCTGAAGGTCGTGCCGG
 AAGGAATCAGAATGAACAAAACCTGTGGCTGTTCCGACCCTGGATCCAGAACGCTGGGCCGTGAAGGAGT
 GCAGAAAGAGGACATCCACCTGCAGACCTCAGTGACCAAGTCCCGACACCGAGTCTGAGACCAGAATT
 CTCTGCAAGGGACCCAGTGGCCAGATGACAGAGGATGCCGTGACCGGGAACGGCTGAAGCACCTCA
 TTGTGACCCCTCGGGCTGCGGGGAACAGAACATGATCGGCATGACGCCACGGTTCATCGCTGTGCAATTA
 CCTGGATGAAACCGAGCAGTGGGAGAAGTTCGGCCTAGAGAAGCGCAGGGGGCCTTGGAGCTCATCAAG
 AAGGGGTACCCAGCAGCTGGCCTTACAGACAACCCAGCTCTGCCTTTGCGGCCTTCGTGAAACGGGCAC
 CCAGCACCTGGCTGACCGCTACGTGGTCAAGGCTTCTCTCTGGCTGTCAACCTCATCGCCATCGACTC
 CCAAGTCTCTGCGGGGCTGTTAAATGGCTGATCCTGGAGAAGCAGAAGCCCGACGGGCTTCCAGGAG
 GATGCGCCCGTATACACCAAGAAATGATTGGTGGATTACGGAACAACAACGAGAAAGACATGGCCCTCA
 CGGCCTTTGTTCTCATCTCGCTGCAGGAGGCTAAAGATATTTGCGAGGAGCAGGTCAACAGCCTGCCAGG
 CAGCATACTAAAGCAGGAGACTTCTTGAAGCCAACATGAACTACAGAGATCCTACTACTGTGGCC
 ATTGCTGGCTATGCTCTGGCCAGATGGCAGGCTGAAGGGCCTCTTCTTAACAATTTCTGACCACAG
 CCAAGATAAGAACCCTGGGAGGACCCTGGTAAGCAGCTCTACAACGTGGAGGCCACATCCTATGCCCT
 CTTGGCCCTACTGCAGCTAAAAGACTTTGACTTTGTGCCTCCCGTGTGCGTGGCTCAATGAACAGAGA
 TACTACGGTGGTGGCTATGGCTCTACCCAGGCCACCTTCATGGTGTTCGAAGCCTTGGCTCAATACCAAA
 AGGACGCCCTGACCACCAGGAAGTGAACCTTGATGTGTCCCTCCAAGTCCAGCCGACGCTCCAAGAT
 CACCCACCGTATCCACTGGGAATCTGCCAGCCTCCTGCGATCAGAAGAGACCAAGGAAAATGAGGGTTTC
 ACAGTCACAGCTGAAGGAAAAGGCCAAGGCACCTGTGCGTGGTGAACAATGTACCATGCTAAGGCCAAAG
 ATCAACTCACCTGTAATAAATTCGACCTCAAGGTACCCATAAAACAGCACCGGAAACAGAAAAGAGGCC
 TCAGGATGCCAAGAACACTATGATCCTTGAGACTGTACCAGGTACCGGGGAGACCAGGATGCCACTATG
 TCTATATTGGACATATCCATGATGACTGGCTTTGCTCCAGACACAGATGACCTGAAGCAGCTGGCCAATG
 GTGTTGACAGATACATCTCCAAGTATGAGCTGGACAAAGCCTTCTCCGATAGGAACACCCTCATCATCTA
 CCTGGACAAGGTCTCACACTCTGAGGATGACTGTCTAGCTTTCAAAGTTCACCAACTTTAATGTAGAG
 CTTATCCAGCCTGGAGCAGTCAAGGCTACGCCTATTACAACCTGGAGGAAAGCTGTACCCGTTTCTACC
 ATCCGAAAAGGAGGATGAAAGCTGAACAAGCTCTGCCGTGATGAACTGTGCCGTGTGCTGAGGAGAA
 TTGCTTCATACAAAAGTCGGATGACAAGGTCACCCCTGGAAGAACGGCTGGACAAGGCCTGTGAGCCAGGA
 GTGGACTATGTGTACAAGACCCGACTGGTCAAGGTTGAGCTGTCCAATGACTTTGACGAGTACATCATGG
 CCATTGAGCAGACCATCAAGTCAGGCTCGGATGAGGTGCAGGTTGGACAGCAGCGCACGTTTCATCAGCCC
 CATCAAGTGCAGAGAAGCCCTGAAGCTGGAGGAGAAGAAACACTACCTCATGTGGGGTCTCTCCTCCGAT
 TTCTGGGAGAGAGAAGCCCAACCTCAGCTACATCATCGGGAAGGACACTTGGGTGGAGCACTGGCCTGAGG
 AGGACGAATGCCAAGACGAAGAGAACCAGAAACAATGCCAGGACCTCGGCGCCTTACCAGAGCATGGT
 TGTCTTTGGGTGCCCCAAC

ACGCGTACGCGGCCGCTCGAG - GFP Tag - GTTTAA

Protein Sequence:

>RG215069 representing NM_000064
 Red=Cloning site Green=Tags(s)

MGPTSGPSLLLLLTHLPLALGSPMYSIITPNILRLESEETMVLEAHDAAQGDVPVTVTHDFPGKLVLS
 SEKTVLTPATNHMGNVFTIPANREFKSEKGRNKFVTVQATFGTQVVEKVVLSLQSGYLFIQTDKTIYT
 PGSTVL YRIFTVNHKLLPVGRVVMVNIENPEGIPVKQDSLSSQNQLGVLPLSWDIPELVNMGQWKIRAYY
 ENSPQQVFSTEFVKEYVLPSEFVIVEPEKFFYYIYNEKLEVTITARFLYGGKVEGTAFFVIFGIQDGEQ
 RISLPESLKRIPIEDGSGEVVLSRKVLLDGVQNLRAEDLVGKSLYVSATVILHSGSDMVQAERSGPIVIT
 SPYQIHFTKPKYFKPGMPFDLMVFTNPDGSPAYRVPVAVQGEDTVQSLTQGDGVAKLSINTHPSQKPL
 SITVTRTKQELSEAEQARTMQALPYSTVGNSNNYLHLSVLRTEL RPGETLNVNLFLLRMDRAHEAKIRYY
 TYLIMNKGRLLKAGRQVREPGQDLVVLPLSITTDIPSFRLVAYYTLIGASGQREVVADSVWVDVKDSCV
 GSLVVKSGQSEDRQPVPVGGQMTLIEGDHGARVVLVAVDKGVFVFNKKNKLTQSKIWDVVEKADIGCTPG
 SGKDYAGVFSADAGLFTTSSSGQTAQRAELQCPQPAARRRRSVQLTEKRMKVGKYPKELRKCCEDGMRE
 NPMRFSCQRRTRFISLGEACKKVFLDCCNYITELRRQHARASHLGLARSNLDEDIAEENIVSRSEFPES
 WLWNVEDLKEPPKNGISTKLMNIFLKDSITTWELAVSMSDKKGCVADPFEVTVMQDFFIDLRLPYSVV
 RNEQVEIRAVLYNYRQNELKVRVELLHNPFCSLATTKRHRHQTVTIPKSSLSVPYVIVPLKTGLQEV
 EVKAAVYHHFISDGVRSLSKVVPEGIRMNKTVAVRTLDPERLREGVQKEDI PPADLSDQVPDTESETRI
 LLQGTPVAQMTEDAVERLKHILVTPSGCGEQNMIGMPTVIAVHYLDETEQWEKFGLEKROGALELIK
 KGYTQQLAFRQSSAFAAFVKRAPSTWL TAYVVKVFS LAVNLIAIDSQVLCGAVKWLILEKQKPDGVFQE
 DAPVIHQEMIGLRNNNEKDMALTAFVLSLQEAKDICEEQVNSLPGSITKAGDFLEANYMNLQRSYTV
 IAGYALAQMGRLKGPLLNKFLTTAKDKNRWEDPGKQLYNVEATSALLALLQLKDFDFVPPVVRWLNQR
 YYGGGYGSTQATFMVFQALAQYQKADPDHQLNLDVSLQLPSRSSKITHRTHWESASLLRSEETKENEGF
 TVTAEGKGQGTLSVVTMYHAKAKDQLTCNKFDLKVTIKPAPETEKRPQDAKNTMILEICTRYRGDQDATM
 SILDISMMTGFAPDTHLQKLANGVDRIYSKYELDKAFSDRNTLIIYLDKVSHEDDCLAFKVHYQVFNVE
 LIQPGAVKVVYAYNLEESCTRFYHPEKEDGKLNKLCRDELRCRAEENCFIQKSDDKVTLERLDKACEPG
 VDYVYKTRLVKQVLSNDFDEYIMAEIQTIKSGSDEVQVGGQRTFISPIKCREALKLEEKHYLMWGLSSD
 FWGEKPNLSYIIGKDTWVEHWPEEDECQDEENQKQCQDLGAFTESMVFVGCPCN

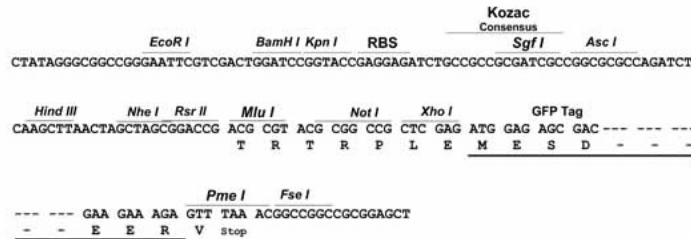
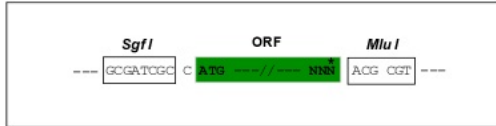
TRTRPLE - GFP Tag - V

Restriction Sites:

SgfI-MluI

Cloning Scheme:

Cloning sites used for ORF Shutting:

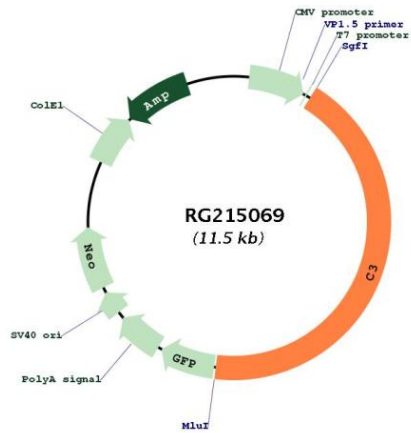


ACCN:

NM_000064

ORF Size:	4989 bp
OTI Disclaimer:	The molecular sequence of this clone aligns with the gene accession number as a point of reference only. However, individual transcript sequences of the same gene can differ through naturally occurring variations (e.g. polymorphisms), each with its own valid existence. This clone is substantially in agreement with the reference, but a complete review of all prevailing variants is recommended prior to use. More info
OTI Annotation:	This clone was engineered to express the complete ORF with an expression tag. Expression varies depending on the nature of the gene.
Components:	The ORF clone is ion-exchange column purified and shipped in a 2D barcoded Matrix tube containing 10ug of transfection-ready, dried plasmid DNA (reconstitute with 100 ul of water).
Reconstitution Method:	<ol style="list-style-type: none">1. Centrifuge at 5,000xg for 5min.2. Carefully open the tube and add 100ul of sterile water to dissolve the DNA.3. Close the tube and incubate for 10 minutes at room temperature.4. Briefly vortex the tube and then do a quick spin (less than 5000xg) to concentrate the liquid at the bottom.5. Store the suspended plasmid at -20°C. The DNA is stable for at least one year from date of shipping when stored at -20°C.
RefSeq:	NM_000064.1 , NP_000055.1
RefSeq Size:	5067 bp
RefSeq ORF:	4992 bp
Locus ID:	718
UniProt ID:	P01024
Cytogenetics:	19p13.3
Domains:	ANATO, NTR, A2M, A2M_N
Protein Families:	Druggable Genome
Protein Pathways:	Complement and coagulation cascades, Systemic lupus erythematosus
Gene Summary:	Complement component C3 plays a central role in the activation of complement system. Its activation is required for both classical and alternative complement activation pathways. The encoded preproprotein is proteolytically processed to generate alpha and beta subunits that form the mature protein, which is then further processed to generate numerous peptide products. The C3a peptide, also known as the C3a anaphylatoxin, modulates inflammation and possesses antimicrobial activity. Mutations in this gene are associated with atypical hemolytic uremic syndrome and age-related macular degeneration in human patients. [provided by RefSeq, Nov 2015]

Product images:



Circular map for RG215069