

Product datasheet for **RG215060**

ABCA8 (NM_007168) Human Tagged ORF Clone

Product data:

Product Type:	Expression Plasmids
Product Name:	ABCA8 (NM_007168) Human Tagged ORF Clone
Tag:	TurboGFP
Symbol:	ABCA8
Mammalian Cell Selection:	Neomycin
Vector:	pCMV6-AC-GFP (PS100010)
E. coli Selection:	Ampicillin (100 ug/mL)
ORF Nucleotide Sequence:	>RG215060 representing NM_007168 Red=Cloning site Blue=ORF Green=Tags(s)

TTTTGTAATACGACTCACTATAGGGCGGCCGGAATTCGTCGACTGGATCCGGTACCGAGGAGATCTGCC
GCC**CGATCGCC**

ATGAGGAAGAGAAAGATCAGTGTGTGTCAACAACTTGGGCCTTATTATGCAAGAACTTTCTTAAAAAT
GGAGAATGAAAAGAGAGTCCCTTAATGGAATGGCTGAATTCATTGCTCCTACTACTTTGTTGTATATATA
TCCTCATAGTCATCAAGTAAATGATTTTTCTTCACTGCTTACCATGGACCTGGGACGGGTAGATACATTT
AATGAATCCAGATTTTCTGTTGTATACACACCTGTCAACACGACCCAAACAGATAATGAATAAGTAG
CCTCACTCCCTTCTGGCAGGTAAGAGGTCTTGGGACTGCCAGATGAGGAAAGTATTAAGAATTCAC
AGCAAATTATCCTGAAGAAATAGTAAGAGTCACCTTTACTAATACATACTCATATCATTTGAAGTCTTG
CTAGGACATGGAATGCCAGCAAAGAAGGAGCACAAAGACCATACAGCTCATTGTTATGAAACAAATGAAG
ATGTTTACTGTGAAGTTTCAGTATTTTGAAGGAAGTTTTGTGGCTCTTCAAGCTGCCATTAATGCTGC
TATTATAGAAATCACAACAAATCACTCAGTGATGGAGGAGCTGATGTCAGTTACTGGAAAAATATGAAG
ATGCATTCCTTCAATGGTCAATCAGGAGTTATAACTGATTTGTACCTTTTTCTGCATTATTTCAATTT
CCTCATTCAATTTACTATGCATCTGTTAATGTCACAAGAGAGAGGAAAAGGATGAAGGCCCTTGATGACAAT
GATGGGTCTTCGGGATTCAGCGTTCTGGCTCTCCTGGGTTTGTCTATGCTGGTTTCATCTTCATTATG
GCCTTTTCTTGGCACTTGTATAAGATCTACCCAGTTTATCATTTTGTCTGGCTTCATGGTAGTCTTCA
GCCTCTTCTCCTGTATGGATTATCTTTGGTAGCTTTGGCTTTCTTAATGAGCATCTTGGTAAAGAATC
TTTCTCACCGGCCTGGTCTGTTCTCCTCACTGTCTTTTGGGGTGTCTGGGGTTCACATCACTGTAC
AGACACCTTCTGCATCCTTGGAGTGGATTTAAGCTTGCTTAGTCCCTTTGCCTTCATGCTTGGAAATGG
CCCAGCTTTTACACTTGGACTATGATTTGAATTCATATGCATTTCTCATCCATCGGACGGCTCAAATCT
CATTGTAGCAACAAATTTCAATGTTGGCATTGACACTGCCTCTATCTGGCATTGGCGATTTACTTTGAA
AAAATTTGCCAAATGAATATGGACATCGACGTCCACCTTTGTTTTCTGAAGTCTCATTGTTGGTCTC
AAACACAAAAGACTGATCAGTGGCCCTTGAAGATGAAATGGATGCCGATCCTTCATTTCAATGACTCTTT
TGAACAAGCGCCTCCAGAATCCAAGGAAAGAAGCCATCAGAATCAGAAATGTTACAAAAGAATATAAA
GGAAGCCTGATAAAATAGAAGCCTTGAAGATCTGGTATTTGACATTTACGAAGGCCAAATCACTGCAA
TACTTGGTCACAGTGGAGCTGAAAGTCAACACTGCTAACATTCTTAGTGGGTTGTCTGTTCCACCAA



[View online »](#)

AGGTTTCAGTCACCATCTATAACAATAAGCTTTTCAGAAATGGCTGACCTAGAAAATCTCAGCAAGCTGACC
GGAGTTTGTCCACAATCCAATGTGCAATTTGACTTCTCTACTGTAAGAGAAAACCTCAGACTCTTTGCTA
AAATAAAAGGGATTCTGCCACAAGAAGTGGATAAAGAGATTTTCTGTTGGATGAACCAACTGCTGGATT
GGATCCCTTTTCAAGACACCAAGTATGGAACCTTCTGAAAGAACGCAAAACAGACCCGCTGATCCTCTTC
AGTACCCAGTTTCATGGATGAGGCCGACATCCTGGCGGACAGGAAAGTATTTCTCTCCAAGGGAAGCTAA
AGTGCCGGGGCTCTTCTTTGTTTCTAAAGAAGAAATGGGGATTGGATATCACTTAAGCTTGCAAGTAA
TGAAATATGTGTTGAGGAAAACATAACATCACTTGTAAACAGCACATCCCTGATGCCAAATTATCAGCC
AAAAGCGAAGGAAAACCTATTTATACATTACCCTTAGAAAAGAACAAATAAATTTCCAGAACCTTACAAGG
ATCTTGATAGCTATCCTGACCTAGGAATTGAGAATTATGGTGTTCATGACAACCTTTGAATGAAGTATT
CCTGAAGCTAGAAGGAAAATCTACAATTAATGAATCGGACATTGCTATTTTGGGAGAAGTACAAGCGGAA
AAAGCTGACGACTGAAAGGCTTGTGAGATGGAACAAGTCTCTCTTCACTTAACAAGATGAGAAAGA
CAATAGTGGTGTGGCTCTGCGCAGCAAACTGCGCAATTGCAAGGGTTCGCTTGTAAAGTAA
GCATGAAAGAAAAGCTCTTTAGCACTGCTAATTAATTAATGGTGGATTTGCCCTCTCTTGTGGAG
TATACCATGGTGAATATATCAAAACAGTTACACCTGGGAACCTTCTCCTCATTGTATTTCTTGCTC
CTGGACAACAACCACATGACCCTCTCACTCAACTACTGATCATCAATAAAACAGGGGCAAGCATTGATGA
CTTTATACAGTCTGTGGAGCACCAGAACATAGCTTTAGAAGTGGATGCATTTGGAAGTAAATGGCACA
GATGACCCATCTTATAATGGAGCCATCACAGTGTGTTGTAATGAAAAGAATTACAGCTTTTCGTTAGCAT
GCAATGCCAAAAGATTGAATTGCTTCCCAGTCTTATGGACATTGTTAGTAAATGGGCTACTTGGAAATGGT
TAAACCATCAGTACATATCCGAAGTAAAGAAAGTACATTTTGGAGAATGGACAGGACAATCCAATCGGA
TTCCTGGCATATATCATGTTCTGGCTGGTTTTAACATCGAGTTGCCACCTTACATTGCCATGAGCAGCA
TCGATGATTATAAGAACAGAGCTCGGTCCCAGCTACGGATTTCCGGACTCTCCCTTCTGCTTACTGGTT
TGGCAGGCGCTGGTGGATGTTCCCTGACTTCTTGGTCTTCGTTTTATATTTAATGAGCTACATT
TCAAATTCGAAGACATGCTACTTACAATAATTCATATTAATCAAATCCCATGTGCTGTTGGTTATTCCT
TTTCCCTCATCTTCATGACATACGTGATTTCCCTCATCTTTCGCAAGGGGAGAAAAAATAGTGGCATTTG
GTCATTTTGTTCATGTTGTCCTGATTCTCTGTTGGCTGGATTTGCGTTCAGTATCTTCGAAAGTGT
ATTCCATTTATCTTCACTTTTTAATACCACCTGCCACAATGATTGGCTGTTGTTCTTATCTTCTCATC
TTCTCTTTTCTTCTCTTTTCTGAAGAACGAATGGATGTACAGCCATTCTGGTATTCCTAATTCCTTT
CCTTCATTTTATCATTTTTCTTTTACTCTTCGATGTCTGGAATGGAAGTTTGGAAAGAAATCAATGAGA
AAGGATCTTTTCTTGAATTTCTCCAAGAAGTAGTGATGTGTGTCAAAATCCAGAAGAACCAGAAGGAG
AGGATGAAGATGTTGAGTGGAAAGAGTGAGAACAGCAAATGCCTGAATTCCTAATTTTATGAGAA
GCCAGTCACTTCCAGCTGTCTACGCAAGGAGTATGCAGGGAAGAGGAAAGGCTGTTTTTCCAAGAGG
AAGAATAAGATAGCCACGAGAAATGTCTCTTCTGTGTTAGAAAAGGTGAAGTTTATAGGATATTAGGAC
ACAATGGAGCTGGTAAAAGCACATCCATTAAGGTGATAACTGGAGACACAAAACCAACTGCTGGACAAGT
GCTACTGAAAGGGAGCGGTGGAGGGGATGCCCTGGAGTTCCTGGGGTACTGCCCTCAGGAGAACGCGCTG
TGGCCCAACCTGACAGTGAAGCAGCACCTGGAGGTGTACGCCCGCTGAAAGGGCTGAGGAAAGGGGATG
CTGAGGTTGCCATCACACGTTAGTGGATGCGCTCAAGCTGCAGGACCAGCTGAAGTCTCCCGTGAAGAC
CTTGTGAGAGGGAATAAAGAGAAAGCTGTGCTTGTCTGAGCATACTGGGAACCCGTCAGTGGTGCTT
CTGGATGAGCCGTCGACCGGATGGACCCGAGGGGCAGCAGCAAATGTGGCAGGCCATCCGGGCCACCT
TTAGAAAACAGGAAAGGGTGCCTCCTAACACCCACTACATGGCAGAGGCTGAGGCCGTGTGACCCG
AGTGGCCATCATGGTATCTGGGAGTTGAGATGTATCGGTTCCATCCAACACTGAAAAGCAAATTTGGC
AAAGATTACCTGCTGGAGATGAAGGTGAAGAACCTGGCACAAGTGGAGCCCTCCATGCAGAGATCTGGA
GGCTTTTCCCCAGGCTGCTCGGCAGGAAAGGTAATCCTCTCTGATGGTTTATAAGTTGCCAGTGGAAAG
TGTGCAACCTTTAGCCCAAGCTTTCTTCAAATAGAGAAGGTTAAACAGAGCTTTGACCTAGAGGAGTAC
AGCCTCTCACAGTCTACCCTGGAGCAGGTTTTCTGGAGCTCTCAAGGAGCAGGAGCTGGGTGATTTTG
AGGAGGATTTTGATCCCTCAGTGAAGTGAAGCTCCTCCCCAGGAAGAGCT

ACGCGTACGCGGCCGCTCGAG - GFP Tag - GTTTAA

Protein Sequence: >RG215060 representing NM_007168
 Red=Cloning site Green=Tags(s)

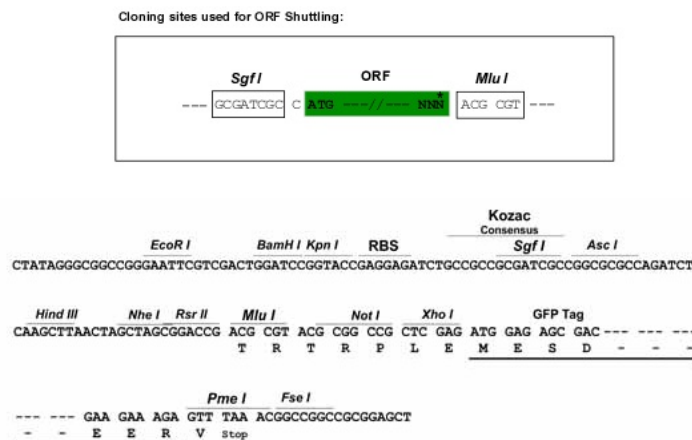
```
MRKRKISVCQQTWALLCKNFLKKWRMKRESLMEWLNLLLLLCLYIYPHSHQVNDVFSSLLTMDLGRVDTF
NESRFSVVYTPVTNTTQQIMNKVASTPFLAGKEVLGLPDEESIKEFTANYPEEIVRVTFNTYSYHLKFL
LGHGMPAKKEHKDHTAHCYETNEDVYCEVSVFWKEGFVALQAAINAAIEITTNHVSMEELMSVTKNMK
MHSFIGQSGVITDLYLFCSCIIISFSSFIYYASVNVTRERKRKMKALMTMMGLRDSAFWL SWGLLYAGFIFIM
ALFLALVIRSTQFIIILSGFMVVFSLFLLYGLSLVALAFLMSILVKKSFLTGLVVFLLTVFWGCLGFTSLY
RHLPASLEWILSLLSPFAFMLGMAQLLHLDYDLNSNAFPHPSDGSNLIVATNFMLAFDTCLYLALAIYFE
KILPNEYGHRRPPLFFLKSSFSWQTQKTDHVALEDEMADPSFHDSFEQAPPEFQGKEAIRIRNVTKKEYK
GKPKDIEALKDLVFDIYEQITAILGHSGAGKSTLLNILSGLSVPTKGSVTIYNNKLSMADLENLSKLT
GVCPQSNVQDFDLTVRENRLFAKIKGILPQEVDKIEIFLLDEPTAGLDPFSRHQVWVLLKERTDRVILF
STQFMDEADILADRKVFLSQGKLCAGSSLFLKKKWGIGYHLSLQLNEICVEENITSLVKQHIDAKLSA
KSEGLIYTLPLERTNKFPELYKDLDSYDGLIENYGVSMITLNEVFLKLEKSTINESDIAILGEVQAE
KADDERLVEMEQVLSLNKMRKTIGGVALWRQICAIARVRLKLRKHERKALLALLILMAGFCPLLVE
YTMVKIYQNSYTWELSPHLYFLAPGQQPHDPLTQLLIINKTGASIDDFIQSVEHQNIALEVDAFGTRNGT
DDPSYNGAITVCCNEKNYSFSLACNAKRLNCFVLMDIVSNGLLGMVKPSVHIRTERSTFLENGQDNPIG
FLAYIMFWLVLTSSCPPYIAMSSIDYKNRARSQRLRISGLSPSAYWFGQALVDVSLYFLVFVFIYLSYI
SNFEDMLLTIIHIIQIPCAVGYSFSLIFMTYVISIFRFRGRKNSGIWSFCFYVVTVFSVAGFAFSIFESD
IPFIFTFLIPPATMIGCLFLSSHLLFSSLFSEERMDVQPFVFLIPFLHFIIIFLTLRCLLEWKFGKSMR
KDPFFRISPRSSDVCQNPEEPEGEDEDVQMERVRTANALNSTNFDEKPVIIASCLRKEYAGKRKGCFSKR
KNKIATRNVSFVCVRKGEVLGGLGHNGAGKSTSIKVIITGDTKPTAGQVLLKGGGGDALEFLGYCPQENAL
WPNLTVRQHLEVYAAVKGLRKGDAEVAITRLVDALKLQDQLKSPVKTLESEGIRKLCFVLSILGNPSVVL
LDEPSTGMDPEGQQQMWQAIRATFRNTERGALLTTHYMAEAEAVCDRVAIMVSGRLRCIGSIQHLKSKFG
KDYLLEMKVKNLAQVEPLHAEILRLFPQAARQERYSSLMYKLPVEDVQPLAQAFFKLEKVKQSFLEEY
SLSQSTLEQVLELSKEQELGDFEEDFDPSVKWKLPPQEEP
```

TRTRPLE - GFP Tag - V

Chromatograms: https://cdn.origene.com/chromatograms/ja1849_f04.zip

Restriction Sites: SgfI-MluI

Cloning Scheme:

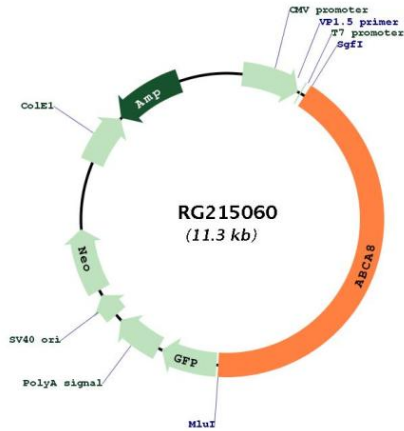


ACCN: NM_007168

ORF Size:	4743 bp
OTI Disclaimer:	<p>Due to the inherent nature of this plasmid, standard methods to replicate additional amounts of DNA in E. coli are highly likely to result in mutations and/or rearrangements. Therefore, OriGene does not guarantee the capability to replicate this plasmid DNA. Additional amounts of DNA can be purchased from OriGene with batch-specific, full-sequence verification at a reduced cost. Please contact our customer care team at custsupport@origene.com or by calling 301.340.3188 option 3 for pricing and delivery.</p> <p>The molecular sequence of this clone aligns with the gene accession number as a point of reference only. However, individual transcript sequences of the same gene can differ through naturally occurring variations (e.g. polymorphisms), each with its own valid existence. This clone is substantially in agreement with the reference, but a complete review of all prevailing variants is recommended prior to use. More info</p>
OTI Annotation:	This clone was engineered to express the complete ORF with an expression tag. Expression varies depending on the nature of the gene.
Components:	The ORF clone is ion-exchange column purified and shipped in a 2D barcoded Matrix tube containing 10ug of transfection-ready, dried plasmid DNA (reconstitute with 100 ul of water).
Reconstitution Method:	<ol style="list-style-type: none"> 1. Centrifuge at 5,000xg for 5min. 2. Carefully open the tube and add 100ul of sterile water to dissolve the DNA. 3. Close the tube and incubate for 10 minutes at room temperature. 4. Briefly vortex the tube and then do a quick spin (less than 5000xg) to concentrate the liquid at the bottom. 5. Store the suspended plasmid at -20°C. The DNA is stable for at least one year from date of shipping when stored at -20°C.
RefSeq:	NM_007168.4
RefSeq Size:	5736 bp
RefSeq ORF:	4746 bp
Locus ID:	10351
UniProt ID:	O94911
Cytogenetics:	17q24.2
Domains:	ABC_tran, AAA
Protein Families:	Druggable Genome, Transmembrane
Protein Pathways:	ABC transporters

Gene Summary:

The membrane-associated protein encoded by this gene is a member of the superfamily of ATP-binding cassette (ABC) transporters. ABC proteins transport various molecules across extra- and intracellular membranes. ABC genes are divided into seven distinct subfamilies (ABC1, MDR/TAP, MRP, ALD, OABP, GCN20, White). This protein is a member of the ABC1 subfamily. Members of the ABC1 subfamily comprise the only major ABC subfamily found exclusively in multicellular eukaryotes. The encoded protein may regulate lipid metabolism and be involved in the formation and maintenance of myelin. Alternative splicing results in multiple transcript variants. [provided by RefSeq, Jan 2014]

Product images:


Circular map for RG215060