

Product datasheet for **RG215055**

SLC12A6 (NM_001042496) Human Tagged ORF Clone

Product data:

Product Type: Expression Plasmids
Product Name: SLC12A6 (NM_001042496) Human Tagged ORF Clone
Tag: TurboGFP
Symbol: SLC12A6
Synonyms: ACCPN; KCC3; KCC3A; KCC3B
Mammalian Cell Selection: Neomycin
Vector: pCMV6-AC-GFP (PS100010)
E. coli Selection: Ampicillin (100 ug/mL)
ORF Nucleotide Sequence: >RG215055 representing NM_001042496
Red=Cloning site Blue=ORF Green=Tags(s)

TTTTGTAATACGACTCACTATAGGGCGGCCGGAATTCGTCGACTGGATCCGGTACCGAGGAGATCTGCC
GCC**CGGATCGCC**

ATGGCTTCAGTTCGGTTCATGGTGACACCCGACAAAGATCGATGACATTCAGGTTTGTCCAGACACCGTC
CGGACCTCAGCTCTCGATCTAGTTCCCGAGTAAGATTTAGCTCCCGGAAAGCGTGCCTGAAACAAGCCG
GAGTGAGCCTATGAGTGAGATGTCTGGGGCCACCCTTCGCTGGCACTGTTGCACTGGATCCACCCAGT
GACCGGACTTCTACCCCAGGATGTCATCGAGGACCTGAGTCAGAACTCCATCACAGGGGAACACAGCC
AACTGTTAGACGACGGACATAAGAAAGCTCGAAATGCTTATCTCAATAATTCCAATTATGAAGAAGGAGA
TGAATATTTTGATAAAAAATTTGGCACTCTTTGAGGAAGAAATGGACACCAGACCGAAGGTGTCTCCCTC
CTCAACCGCATGGCCAATTACACTAATCTGACTCAAGGAGCAAAGGAACATGAAGAGGCAGAAAAACATCA
CTGAAGGGAAAAAGAAGCCACCAAGACCCCAATGGGTACCTTCATGGGTGTCTACCTCCCATGTCT
ACAAAAATTTTTGGAGTGATCCTTTTTTACGCCTTACATGGGTGGTGGGCACAGCTGGAGTCTTCAG
GCTTTTGCAATTGTCTTATCTGCTGCTGTACAATGTTGACTGCTATCTCCATGAGTGCCATTGCCA
CTAATGGAGTGGTGCCAGCTGGGGGCTCATACTTTATGATTTCCCGGGCACTGGGCCAGAGTTTGGTGG
GGCTGTTGGCCTCTGCTTTTATCTTGGTACCACATTTGCAGCAGCCATGTACATCCTTGGTGCCATTGAA
ATCTTTCTGGTCTATATCGTCCCGGAGTGCCATCTTTACAGTGATGACGCACTCAAGGAATCAGCAG
CCATGCTAAATAACATGGGTGTCTACGGCACAGCTTTCTTGGTCCTTATGGTATTAGTGGTATTTATCGG
CGTACGCTATGTGAACAAGTTTGCCCTCACTTTTCTGGCCTGTGTCAATTGTCCATCTTGGCCATCTAT
GCTGGAGCCATCAAGTCTTCTTTGCTCCTCCACACTTCCCGGTCTGCATGCTGGTAACCGCACCCCTTT
CATCAAGACACATTGACGTTTGTCTAAGACCAAGGAAATTAACAACATGACAGTCCCATCAAAGTTATG
GGGATTCTTGTAACTCGAGTCAATTTTTCAATGCCACCTGTGATGAATACTTTGTTACAATAACGTC
ACTTCAATCCAGGGCATTCTGGATTGGCTAGTGGTATAATTACAGAGAATCTTTGGAGTAATTACCTAC
CCAAGGGAGAGATCATCGAAAAGCCTTCAGCCAAATCTTCTGATGTCTTAGGCAGCTTAAACCATGAATA
TGTTCTTGTGACATCACCACTCCTTCAGCTTCTGGTGGGAATCTTCTTCCCTCTGTTACAGGTATC



ATGGCTGGATCAAACAGATCTGGAGATCTGAAAGATGCTCAGAAGTCTATTCCGATTGGTACTATCCTTG
 CCATCCTGACCACCTCCTTTGTTATTTAAGCAATGTTGTCTTTTTGGTGCATGTATTGAAGGGTGT
 TCTCAGAGACAAGTTCGGTGTGCTGTGAAAGGTAATTTGGTGGTAGGCACCTTATCTTGGCCATCCCCA
 TGGGTGATTGTTATTGGCTCCTCTTTTCAACATGTGGGGCTGGACTTCAGAGCCTCACAGGTGCACCGA
 GGCTGCTACAAGCTATTGCCAAGGATAACATCATACCGTTTCTGAGGGTTTTGGCCACAGCAAAGCCAA
 TGGGGAACCTACCTGGGCTTACTTCTAACTGCTGCCATTGCAGAGCTTGAATACTCATTGCCTCGCTG
 GATCTTTGGCCCCAATCTTTCCATGTTTTTCTCATGTGTTACCTCTTTGTAACATGGCATGTGCAT
 TGCAAACATTACTTCGAACACCCAAGTGGAGACCCCGATTCCGCTACTACCATTGGGCCCTTTCTTCAT
 GGGAAATGAGTATCTGTCTGGCTCTGATGTTCAATTTCTCCTGGTATTATGCCATTGTAGCCATGGTAATA
 GCTGGTATGATCTACAAGTACATTGAATACCAAGGAGCTGAGAAAAGTGGGGTATGGTATCCGTGGG
 TGTCCCTCAGTGCAGCCCGTTTCTTTGCTTCGATTGGAGGAAGGACCTCCACACACTAAAACTGGAG
 GCCTCAGTTGCTGTATTACTGAACTAGATGAAGACTTACATGTCAAGCATCCTCGCTCCTCACCTTT
 GCCTCACAGCTCAAAGCAGGAAAAGGTCTCACTATTGTGGCTCTGTATCGTGGGAACTTCTAGAGA
 ACTACGGTGAAGCTTTAGCTGCTGAGCAGACCATAAAGCACCTAATGGAGGCAGAGAAGGTAAGGATT
 CTGCCAGCTGGTGGTGGCCGCAAGCTGAGAGAGGGCATTCCCACCTCATCCAGTCATGTGGCCTTGGG
 GGATGAAGCACAAACACGGTGGTGTGGCTGGCCTAATGGCTGGCGTCAAAGCGAAGATGCCCGCGCTT
 GGAAGACTTTTATTGGCACAGTTCGAGTGACAAGTCTGCTGCCATCTTGCCTGCTGGTGGCTAAAAACAT
 CTCTTCTTTCCAGCAATGTGGAGCAATTTCTGAGGGCAACATTGATGTGTGGTGGATTGTGCATGAT
 GGGGGGATGCTTATGCTACTACCATTCTACTGAAACAGCACAAAGGTGTGGCGAAAGTGCAGCATACGGA
 TCTTACAGTAGCCCAATTAGAAGACAACAGTATCCAAATGAAGAAGGACCTAGCCACCTTCTATATCA
 CTTACGCATTGAGGCGGAGGTAGAAGTGGTGGAGATGCATGACAGTGATATCAGCATATACTTACGAG
 CGCACTTTGATGATGGAACAAAGGTCCCAGATGCTCCGGCACATCGCGCTATCCAAAACAGAGGAGACA
 GAGAGGCACAATTGGTGAAGACCGAAAACCTCAATGCTACGATTGACCAGCATTGGCTCTGATGAGACGA
 AGAGACAGAAAACCTATCAGGAGAAGGTGCACATGACTTGGACAAAAGACAAGTACATGGCATCCCGGGGA
 CAAAAAGCGAAGTCAATGGAAGGATTCCAGGACCTGCTTAACATGCGTCCGGACCAGTCCATGTGAGGC
 GGATGCATACAGCAGTGAAGTCAACGAGGTTATAGTTAAACAAGTCCATGAAGCAAAGCTGGTTTTATT
 GAATATGCCAGGGCCACCCCGAAACCTGAGGGTGTGAAAACACATGGAGTTCCTAGAGGTGCTTACC
 GAGGGACTAGAGCGAGTCTACTTGTCCGGGTGGTGGCAGTGAAGTGTACACCTTTATTCA

ACGCGTACGCGGGCCGCTCGAG – GFP Tag – GTTTAA

Protein Sequence:

>RG215055 representing NM_001042496
 Red=Cloning site Green=Tags(s)

MASVRFMVTPTKIDIPGLSDTSPDLSSRSSRVRFSSRESVPETSRSEPMSEMSGATTSLATVALDPPS
 DRTSHPQDVIEDLSQNSITGEHSQLLDDGHKKARNAYLNNSNYEEGDEYFDKNLALFEEEMDTRPKVSSL
 LNRMANYTNLTQGAKEHEEAENITEGKKKPTKTPQMGTFMGVYLPCLQNI FGVI LFLRLTWVVG TAGVLQ
 AFAIVL ICCCCTMLTAISMSAIATNGVVPAGGSYFMISRALGPEFGGAVGLCFYLGTTFAAAMYILGAIE
 IFLVYIVPRAAIFHSDDALKESAAMLNMRVYGT AFLVLMVLVVF IGVRVYVNFASLFLACVIVSILAIY
 AGAIKSSFAPPHFPVCM LGNRTLSSRHIDVCSKTEINNMTVPSKLGWFFCNSSQFFNATCDEYFVHNNV
 TSIQGIPLASGIITENLWSNYLPKGEIIEKPSAKSSDVLGSLNHEYVLVDITTSFTLLVGIFFPSVTGI
 MAGSNRSGDLKDAQSIPIGTILAILTTSFVYLSNVVLF GACIEGVVLRDKFGDAVKGNL VVGTLSWSP
 WVIVIGSFFSTCGAGLQSLTGAPRLQAIKDNIPFLRVFGHSHKANGPTWALLLTAIAELGILIASL
 DLVAPILSMFFLMCYLFVNLACALQTLRTPNWRPRFRYYHWAL SFMGMSICLALMFISSWYYAIVAMVI
 AGMIYKYIEYQGAKEWGDGIRGLSLSAARFALLRLEEGPPHTKNWRPQLLVLLKLEDLHVHKHPRLLTF
 ASQLKAGKGLTIVGSVIVGNFLENYGEALAAEQTIKHLMEAEKVKGFCQLVVAAKLREGISHLIQSCGLG
 GMKHNTVVMGWPNQWRQSEDARAWKTFIGTVRVTTAAHLALLVAKNISFFPSNVEQFSEGNIDVWVIVHD
 GGMLMLLPFLKQHKVWRKCSIRIFTVAQLEDNSIQMKKDLATFLYHLRIEAEVEVEMHSDISAYTYE
 RTLMMEQRSQMLRHMLSKTERDREAQLVKDRNSMLRLT SIGSDEDEETETYQEKVHMTWTKDKYMASRG
 QKAKSMEGFQDLLNMRPDQSNVRRMHTAVKLENI VNK SHEAKL VLLNMPGPPRNPEGDENYMEFLEVL T
 EGLERVLLVRGGGSEVITIYS

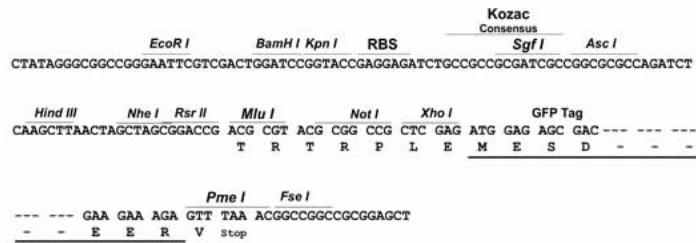
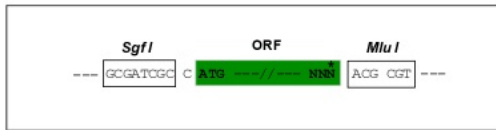
TRTRPLE – GFP Tag – V

Restriction Sites:

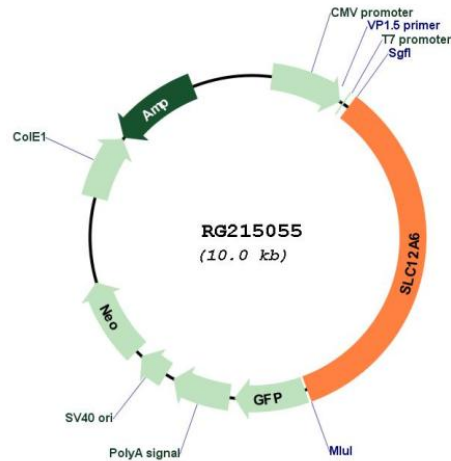
SgfI-MluI

Cloning Scheme:

Cloning sites used for ORF Shuttling:



Plasmid Map:



ACCN: NM_001042496

ORF Size: 3423 bp

OTI Disclaimer: The molecular sequence of this clone aligns with the gene accession number as a point of reference only. However, individual transcript sequences of the same gene can differ through naturally occurring variations (e.g. polymorphisms), each with its own valid existence. This clone is substantially in agreement with the reference, but a complete review of all prevailing variants is recommended prior to use. [More info](#)

OTI Annotation: This clone was engineered to express the complete ORF with an expression tag. Expression varies depending on the nature of the gene.

Components: The ORF clone is ion-exchange column purified and shipped in a 2D barcoded Matrix tube containing 10ug of transfection-ready, dried plasmid DNA (reconstitute with 100 ul of water).

Reconstitution Method:

1. Centrifuge at 5,000xg for 5min.
2. Carefully open the tube and add 100ul of sterile water to dissolve the DNA.
3. Close the tube and incubate for 10 minutes at room temperature.
4. Briefly vortex the tube and then do a quick spin (less than 5000xg) to concentrate the liquid at the bottom.
5. Store the suspended plasmid at -20°C. The DNA is stable for at least one year from date of shipping when stored at -20°C.

RefSeq: [NM_001042496.2](#)

RefSeq Size: 7754 bp

RefSeq ORF: 3426 bp

Locus ID: 9990

UniProt ID: [Q9UHW9](#)

Cytogenetics: 15q14

Protein Families: Transmembrane

Gene Summary: This gene is a member of the K-Cl cotransporter (KCC) family. K-Cl cotransporters are integral membrane proteins that lower intracellular chloride concentrations below the electrochemical equilibrium potential. The proteins encoded by this gene are activated by cell swelling induced by hypotonic conditions. Alternate splicing results in multiple transcript variants encoding different isoforms. Mutations in this gene are associated with agenesis of the corpus callosum with peripheral neuropathy. [provided by RefSeq, Jul 2008]