

## Product datasheet for **RG215034**

### GLT28D1 (ALG13) (NM\_001099922) Human Tagged ORF Clone

#### Product data:

Product Type:	Expression Plasmids
Product Name:	GLT28D1 (ALG13) (NM_001099922) Human Tagged ORF Clone
Tag:	TurboGFP
Symbol:	ALG13
Synonyms:	CDG1S; CXorf45; DEE36; EIEE36; GLT28D1; MDS031; TDRD13; YGL047W
Mammalian Cell Selection:	Neomycin
Vector:	pCMV6-AC-GFP (PS100010)
E. coli Selection:	Ampicillin (100 ug/mL)
ORF Nucleotide Sequence:	>RG215034 representing NM_001099922 Red=Cloning site Blue=ORF Green=Tags(s)

TTTTGTAATACGACTCACTATAGGGCGGCCGGAATTCGTCGACTGGATCCGGTACCGAGGAGATCTGCC  
GCC**CGATCGCC**

ATGAAGTGCCTGTTTGTACCGTAGGGACCACCAGCTTTGACGACCTCATTGCGTGTGTGTCGGCGCCCG  
ACAGTCTGCAAAAAATCGAGAGCCTTGGTTACAACCGACTTATCCTGCAAATTTGGTAGAGGAACGGTGGT  
ACCTGAACCCCTCAGTACTGAGTCGTTTACTCTGGATGTTTACAGGTACAAGGATTCCTTGAAGAAGAC  
ATTCAGAAAGCAGATCTTGTATTAGTACGCGAGGTGCAGGAAGCTGTTGGAGACTCTGAAAAAGGAA  
AGCCACTCGTAGTGGTTATAAACGAAAAGTTGATGAACAATCATCAGCTGGAAGTGGCAAAGCAGCTACA  
CAAAGAGGGTCATCTCTTATTGTACCTGCAGGGTCTGACTTGTCTGGGCAAGCCAAGTCCATTGCT  
TCTGCTCCTGGGAAGTGCCAAGATTCTGCACGCTGACTTCAACTGCCTTTTCAGGCCTAGACTTTGGGC  
TGCTTTCCGGATACCTGCATAAGCAAGCCCTTGTACTGCTACCCATCCTACCTGCACCCTGCTTTTTCC  
CTCTTGCCACGCTTTTTTCTCTCCCTTACCACCCACCTGTACAAAATGCATAAAGGATGAAAAAC  
TACTGCAGCCAGAAGTCTTTGAATGAGGCATCAATGGATGAATATTTAGGCAGCTTAGGGCTGTTTCGAA  
AGCTGACTGCCAAGGATGCCTCTGCCTCTTTCGGGCCATTTTCGGAGCAGTTGTTTTGCAGCCAGGTCCA  
TCATTTGGAATCAGGAAGGCTTGTGTCTCATATAGAGGAAAATCAACAACTTTTGAAGTCTTATGTG  
GAGGATCTTTGAGAAAATACCTGGAACGGTTGGGAGATCCCAAGGAAAAGTGTGGCAGCTGGAATAA  
GAGCTCTTCTCTAATTTATAATCGGGATTTTATTCTTTATCGCTTTCCTGGAAAACCTCCAACCTTATGT  
CACAGATAATGGCTATGAAGACAAGATTCTACTCTGCTACTCAAGTAGTGGTCACTATGATTCTGTGTAC  
TCAAAAACAATTTAGTCAAGTGCAGCTGTTTGTGACGGCTGATTGTACGAAATTTCTATAAAGATGTGT  
TTGTTGTGGATGAAGAAGAGTTGAAGACTGCGATTAATTTGTTTCGAAAGTGGTTCTAAGAAGAACAGAAA  
TAATGCTGTAAGTGAAGCGAGGATGCCATACTGATTACAAGAGTTCAAATCAGAAATAGGATGGAAGAG  
TGGGGTGCCTGCTACAATGCTGAAAATATACCAGAGGGCTACAATAAAGGAACAGAAAGAAACAAAGTCTC  
CAGAAAATCCATCAAAGATGCCCTTCCCCTATAAGGTGCTCAAAGCCCTGGATCCAGAAAATCTATCGTAA  
TGTAAGATTTGATGTTTGGTTGGACAGCAGAAAAGAACTCAAAAATCTGATTACATGGAGTATGCTGGG



[View online »](#)

AGACAGTACTATTTGGGAGACAAGTGTCAGGTTTGCTTGAATCAGAAGGAAGATATTATAATGCTCATA  
 TCCAGGAAGTTGGAATGAGAACAATTCAGTAACAGTCTTCATTGAAGAATTGGCGGAAAAGCATGTTGT  
 TCCACTGGCTAACTTAAAACAGTTACCCAAGTGATGTCTGTTCCCTGCCTGGAATGCTATGCCAGTCGG  
 AAAGGAAGAGGTTACCAGAAAATGCCTGGGGTTATGTCCCGAAATAGTTATATCAGAGATGGACATAA  
 AGCAACAGAAGAAGATGTTCAAGAAAATTCGAGGGAAAGAAGTTACATGACTATGGCTTACGGCAAGGG  
 AGACCCCTCCTCCCACCCAGGCTGCAGCACAGTATGCATTATGGGCACGATCCTCCAATGCACACTACTCA  
 CAGACAGCTGGCAATGTTATGTCTAATGAACATTTTCATCCTCAGCATCCATCTCCGAGACAAGTCGGG  
 GATATGGGATGCCAGGAATTCATCTCGTTTATAAACAGGCACAACATGCCGGGCCCTAAAGTTGATTT  
 TTACCCAGGCCAGGTAAAAGGTGCTGCCAGAGCTATGATAAATTCTCTTATAGATCTCGTTCATTTAGA  
 CGTAGTACCCGCCAGATGAGTTGTGTGAATAAGGAGTCCCAGTATGGATTTACCCAGGGAATGGACAGA  
 TGCCAGGGGCTTGAAGAACTATTACTTTTTATGAAGTTGAAGAAGGGGATGAGACTGCTTATCCAAC  
 TTTACCTAATCATGGAGTCCCTCTACAATGGTTCCTGCTACTTCAGGATACTGTGTTGGAAGCGGGGA  
 CATAGCTCAGGCAACAGACTTTGAATTTAGAGGAGGGCAATGCCAGAGTGAAAATGGCGATATCATG  
 AAGAATATCTTTATCGTGCAGAGCCAGACTATGAAACTTCAGGTGTTTATAGCACAACTGCATCTACAGC  
 AAATTGTCTCTCAGGACAGAAAAGTCATGTTCTATGTCTCCTCAGGACACAGTTACCTCATACTAC  
 CCCAGAAGATGATGGGAAATATTGCAGCAGTTGCAGTTCCTGTGCCAATAATGTTCCAGCTCCAGTCT  
 TATCTAACGGTGCAGCGGCTAATCAAGCTATTAGTACCACTTCAGTTTCCCTCACAGAATGCTATACAGCC  
 TCTCTTTGTATCTCCACCTACACACGGCAGGCCAGTGATTGCCTCACCATCCTATCCATGCCATTCTGCT  
 ATTCTCATGCTGGTGCCTCTCTACCACCACCACCACCACCACCACCACCACCACCACCACCACCACCTC  
 CT  
 ACC  
 GTTTTGCAGTACTATTTCAATCTAGGATTGCAGTGTCTATTACCACAGTACTGGCACTCCATGGTCTATG  
 TGCCACAGATGCAGCAGCAGCTTCATGTAGAGAATTATCCAGTCTATACTGAGCCACCTCTGGTAGATCA  
 AACCGTTCCTCAATGCTACAGTGAAGTGAAGAGAGAAGATGGCATAACAGGCGGAAGCATCAGCAAATGAT  
 ACTTTTCCGAATGCTGATTCTTCTCATCTGCTCCCTCATGGAGCAGTCTATTATCCAGTAATGCAGATCCCT  
 ATGGGCAGCCACCTTTGCCAGGTTTACTCCTGCCTTCCGTTGTGCCAGATTATCTGTGTTCCCCC  
 CTGGCATCCAGTTGGTACAGCATATGGTGGTCTTCTCAAATTCATGGTGTATAAATCCTGGCCAATT  
 GGCTGTATTGCTCCATCTCCCCAGCTTCTCATTATGTACCTCAGGGTATG

ACGCGTACGCGGCCGCTCGAG - GFP Tag - GTTTAA

**Protein Sequence:**

>RG215034 representing NM\_001099922  
 Red=Cloning site Green=Tags(s)

MKCVFVTVGTTSFDDLIACVSAPDSLQKIESLGYNRLILQIGRGTVVPEPFSTESFTLDVYRYKDSLKED  
 IQKADLVISHAGAGSCLLETLEK GKPLVVINEKLMNNHQLELAKQLHKEGHLFYCTCRVLTCPGQAKSIA  
 SAPGKQDSAALTSTAFSGLDFGLLSGYLHKQALVTATHPTCTLLFPSCHAFFPLPLTPTLYKMHKGWKN  
 YCSQKSLNEASMDEYLGSLGLFRKLTAKDASCLFRAISEQLFCSQVHHLEIRKACVSYMRENQQTFFESYV  
 EGSFEKYLERLGDPKESAGQLEIRALSLIYNRDFILYRFPGKPPTYVTDNGYEDKILLCYSSSGHYDSVY  
 SKQFQSSAAVCQAVLYEILYKDFVVDDEELKTAIKLFRSGSKNRNNAVTSSEDAHTDYKSSNQNRMEE  
 WGACYNAEINPEGYNKGTETKSPENPSKMPFYPYKVLKALDPEIYRNVEFDVWLDNRKELQKSDYMEYAG  
 RQYYLGDKQCQVLESEGRYYNAHQEVGNENNSVTVFIEELAETHVPLANLKPVTQVMSVPAWNAMPSPR  
 KGRGYQKMPGGYVPEIVISEMDIKQKKMFKKIRGKEVYMTMAYGKGDPLLPRLQHSMHYGHDPMPHYS  
 QTAGNVMNEHFHPQHPSPRQGRGYGMPRNSSRFINRHNMGPVKVDFYPGPKRCCQSYDNFSYRSRFR  
 RSHRQMSCVNKESQYGFTPGNGQMPRGLLEETITFYEEVEEGDETA YPTLPNHGGPSTMVPATSGYCVGRRG  
 HSSGKQTLNLEEGNGQSENGRYHEEYL YRAEPDYETSGVYSTTASTANLSLQDRKSCSMSPQDVTVSYNY  
 POKMMGNIAA VAASCANVPAPVLSNGAAANQAISTTSVSSQNAIQPLFVSPPTHGRPVIA SPSPYCHSA  
 IPHAGASLPPPPPPPPPPPPPPPPPPPPPPALDVGGETSNLQPPPPPLPPPPYCDPSGSDLPQDTK  
 VLQYYFNLGLQCYHYSYWHSMVYVPQMQLHVENYPVYTEPPLVDQTVPCYSEVRREDGIQAEASAND  
 TFPNADSSVPHGAVYYPVMSDPYGPPLPGFDSCLPVVDPYSCVPPWHPVGTAYGSSQIHGA INPGPI  
 GCIAPSPASHYVPQGM

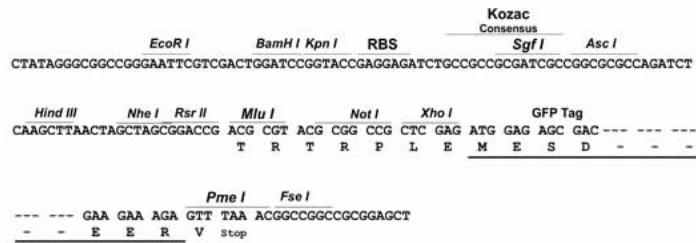
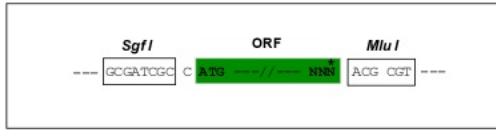
TRTRPLE - GFP Tag - V

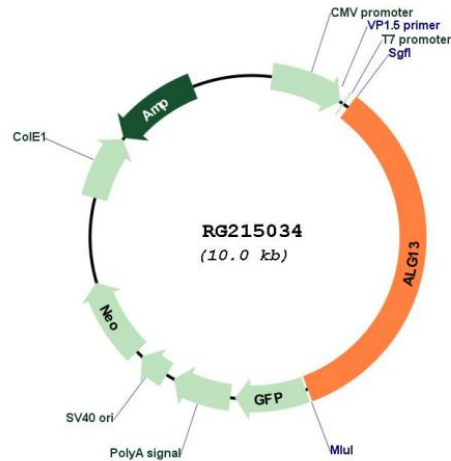
Restriction Sites:

SgfI-MluI

Cloning Scheme:

Cloning sites used for ORF Shuttling:



**Plasmid Map:**


**ACCN:** NM\_001099922

**ORF Size:** 3411 bp

**OTI Disclaimer:** Due to the inherent nature of this plasmid, standard methods to replicate additional amounts of DNA in *E. coli* are highly likely to result in mutations and/or rearrangements. Therefore, OriGene does not guarantee the capability to replicate this plasmid DNA. Additional amounts of DNA can be purchased from OriGene with batch-specific, full-sequence verification at a reduced cost. Please contact our customer care team at [custsupport@origene.com](mailto:custsupport@origene.com) or by calling 301.340.3188 option 3 for pricing and delivery.

The molecular sequence of this clone aligns with the gene accession number as a point of reference only. However, individual transcript sequences of the same gene can differ through naturally occurring variations (e.g. polymorphisms), each with its own valid existence. This clone is substantially in agreement with the reference, but a complete review of all prevailing variants is recommended prior to use. [More info](#)

**OTI Annotation:** This clone was engineered to express the complete ORF with an expression tag. Expression varies depending on the nature of the gene.

**Components:** The ORF clone is ion-exchange column purified and shipped in a 2D barcoded Matrix tube containing 10ug of transfection-ready, dried plasmid DNA (reconstitute with 100 ul of water).

- Reconstitution Method:**
1. Centrifuge at 5,000xg for 5min.
  2. Carefully open the tube and add 100ul of sterile water to dissolve the DNA.
  3. Close the tube and incubate for 10 minutes at room temperature.
  4. Briefly vortex the tube and then do a quick spin (less than 5000xg) to concentrate the liquid at the bottom.
  5. Store the suspended plasmid at -20°C. The DNA is stable for at least one year from date of shipping when stored at -20°C.

RefSeq:	<a href="#">NM_001099922.3</a>
RefSeq Size:	4179 bp
RefSeq ORF:	3414 bp
Locus ID:	79868
UniProt ID:	<a href="#">Q9NP73</a>
Cytogenetics:	Xq23
Protein Pathways:	Metabolic pathways, N-Glycan biosynthesis
Gene Summary:	<p>The protein encoded by this gene is a subunit of a bipartite UDP-N-acetylglucosamine transferase. It heterodimerizes with asparagine-linked glycosylation 14 homolog to form a functional UDP-GlcNAc glycosyltransferase that catalyzes the second sugar addition of the highly conserved oligosaccharide precursor in endoplasmic reticulum N-linked glycosylation. Multiple transcript variants encoding different isoforms have been found for this gene. [provided by RefSeq, Dec 2009]</p>