

Product datasheet for **RG215004**

PPP1R3A (NM_002711) Human Tagged ORF Clone

Product data:

Product Type:	Expression Plasmids
Product Name:	PPP1R3A (NM_002711) Human Tagged ORF Clone
Tag:	TurboGFP
Symbol:	PPP1R3A
Synonyms:	GM; PP1G; PPP1R3
Mammalian Cell Selection:	Neomycin
Vector:	pCMV6-AC-GFP (PS100010)
E. coli Selection:	Ampicillin (100 ug/mL)
ORF Nucleotide Sequence:	>RG215004 representing NM_002711 Red=Cloning site Blue=ORF Green=Tags(s)

TTTTGTAATACGACTCACTATAGGGCGGCCGGAATTCGTCGACTGGATCCGGTACCGAGGAGATCTGCC
GCC**CGATCGCC**

ATGGAGCCTTCTGAAGTACCTAGTCAGATTAGCAAAGATAATTTTTAGAAAGTTCCTAATTTATCTGACT
CTCTTTGTGAAGATGAAGAAGTTACTTTCCAACCTGGTTTCTCCCCTCAACCAAGTAGACGAGGTTCTGA
TTCTTCTGAAGACATACCTGGATACCCCATCTTCAGGTAAGAGAGTTTCATTTGCTGATTCCTTT
GGATTCATCTTGTCTGTTAAAGAATTTGATTGCTGGGAATTACCGAGTGCTTCAACCACTTTTGACT
TAGGGACGGACATTTTCCACACAGAAGAATATGTTTTAGCCCCACTGTTTGACTTGCCTTCTCAAAGA
AGATCTTATGCAACAACCCAAATACAGAAAGCAATACTGGAGTCAACTGAGTCTTCTTGGGTCTACA
AGTATCAAGGGTATTATTCGAGTTTTGAATGTTTTCTTTGAGAAGTTAGTATATGTAAGAATGTCTTTAG
ATGACTGGCAGACACATTATGACATTTTAGCAGAAATATGTTTCTAATTCATGTGATGGTAAACTGACCA
GTTCTCCTTTAAGATTGTATTGGTTCCTCCTTATCAAAAAGATGGCAGTAAAGTTGAGTTTTGTATACGT
TATGAACTTCTGTTGGTACATTTTGGTCAAATAATAATGGCACAAATATACATTCATTTGTCAAAGA
AAGAACAAGAGCCGGAGCCTGTAAAACCATGAAAAGAAGTTTCTAACAGACAAAATAAAGGCTGCTTAA
GGTAAATCAAGTAAAGAAGAATCATCAGTAACATCAGAAGAAAATAACTTTGAGAAATCCAAGAATACA
GATACCTATATCCCAACAATCATTGTTCTCATGAGGACAAGGAAGTTTGGAAAGCCAGTAACTCGAAATG
TAAAAGATGTAACAGGGAACATGATGAACATAATGAAAAGAATTAGAGTTGATGATAAATCAACACTT
AATAAGAACCAGAAGTACTGCTTCCAGAGATGAAAGGAATACATTTTCAACAGATCCAGTCAATTTTCCA
AATAAAGCAGAGGGTTAGAGAAGAAGCAAATCCATGGTAAATATGTAAGTACTGACTTGTCCAAAGGCTCTC
TGTCTCAAGTTCATCAGCAGAAAGCTCCGTAAGGGAGATTTTTACTGCAATGAAAAATTCCTCAGG
AGATGACTGTACACATCAACCTTCAAGGAACTACTTCAAATATGGGAGAAATCAAGCCATCATTGGGA
GATACTAGTAGTATGAACTAGTCAATTACATACTGGCAGCAAAGAAGTCTGGATGATAATGCTAATC
CAGCCATGGCAATGGCACAATGCAAAATACCTTCCCCCTTTCAGATCAACTAATGGCAGGAAACCTTAA
TAAAAACATGAAGGAGGAGCTAAAAAATTGAAGTAAAGATTTGGGATGTTTACGAAGAGATTTCCAT



TCAGATACGTCGGCATGTCTCAAAGAATCAACAGAAGAAGGATCTTCTAAGGAAGATTATTATGGCAATG
 GTAAGGATGATGAAGAACAAAGAATATATTTAGGTGTTAATGAAAAACAAAGAAAAATTTCCAAACAAT
 CTTACATGACCAAGAAAGGAAGATGGGTAAACCTAAAAAAGTGTGGCAGGGATTGGAGCTAGTAACAGA
 GACCTGGTACTCTGCTGAGCGAACATACCGCAATCCCCACCCGGGCAATCACAGCAGATGTGTCTCATT
 CACCAAGGACAAATTTAAGTTGGGAAGAAGCTGTGTTAACCCAGAGCATCATCATTTGACTAGTGAAGG
 CAGCGCTTAGGAGGGATAACTGGTCAAGTTTGTTCATCAAGAACTGGAAATGTTTTGAGGAATGATTAT
 CTTTTCCAAGTTGAAGAAAAATCAGGTGGGATTAATTCTGAAGATCAGGATAATAGCCACAGCATAAAC
 AAAGTTGGAATGTTCTGGAAGTCAAGGAAAAATCAAGAGAGAATAAGACAACATACAGAGCATATCAA
 AGGACAAACAGATTGTGAAGACGTGTGGGAAAAAGAGATAATACGAGGAGTTTGAAGCTACTACAGAA
 GAATTGTTACCTGCCAAGAAACAGTGTGCTGTGAACTGTCTTCTCTAGCTGATCATGGCATTACTGAGA
 AAGCAGAAGCTGGTACAGCCTATATAATTAAGACAACATCAGAAAGTACTCCAGAAAGCATGTCTGCTAG
 AGAAAAAGCAATAATTGCTAAGCTACCTCAAGAGACAGCAGGAAGTACAGGCCCATCGAGGTAAGGAA
 ACAGCGTTTGATCCACATGAAGGAGAAATGATGATTCACATTATACCCTTTGTCAACGAGATACAGTAG
 GTGTAATCTATGACAATGATTTTAAAAGGAATCACGTTTAGGTATTTGTAATGTACGTGTAGATGAAAT
 GGAGAAGGAAGAACCATGTCTATGTACAATCCTAGGAAGACACATGACAGGGAGAAATGTGGCACTGGA
 AATATAACATCTGTGGAAGAATCCTCATGGGTCATTACAGAATATCAAAAAGCAACTTCAAAACTGGATT
 TACAGTTGGGAATGTTACCAACAGACAAAAGTATTTTTCAGAAAACAGAGATCATAGGCAGGTTCAAGA
 ATTATCAAGAAAACAGACTCGGATGCCATTGTGCATTCTGCTTTAACTCAGACACTAATAGAGCTCCT
 CAGAATAGCTCTCCTTTTTCCAAACATCATACTGAAATTTAGTGTCAACTAATGAGCAGGCAATTGCTG
 TAGAGAATGCAGTTACTACCATGGCTAGCCAACCTATTTCTACGAAATCAGAAAAATTTGTAATTAAC
 AAGAGAAATCCAGGATTTGAGAAGCACCTTATCCTGAGTCTAAACCTGAAGAAGTTTCCAGAAGTTCA
 GGAATAGTGACATCAGGTAGTAAAAAGAAAGATGCATAGGCCAGATTTTCCAAACAGAAAGATAGTG
 TGGAAAAATCTCTAGGGCAATGATTTTAAACAACCTCTTGAGAATATGGAAGAAGCAAGGCATGA
 AAATGAAGGATTAGTAAGCTCTGGCAATCACTATACACTTCAGGTGAAAAGGAATCTGACAGCTCTGCT
 TCTACTAGTCTTCTGTTGAGGAAAGTCAAGCTCAAGGCAACGAATCTTTGTTTTCAAAATATACCAACT
 CTAATAACCTTATTTCTTTTGTCTGATATTTCTTATAACTGTCTACCATTAGACTTAATGATTGG
 CTTGACATTCTACGTTTTGTCATTGTCCTGGCTATCCTGGGAAGAGGGTAGACAAAAAGAGTCTGTCAA
 AAGAAG

ACGCGTACGCGGCCGCTCGAG – GFP Tag – GTTTAA

Protein Sequence:

>RG215004 representing NM_002711
 Red=Cloning site Green=Tags(s)

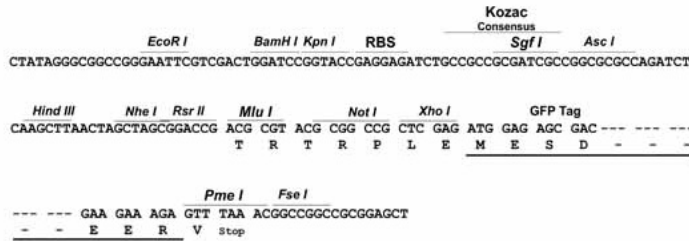
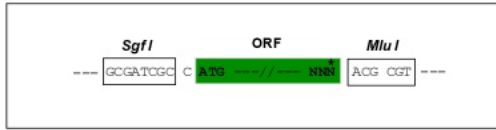
MEPSEVPSQISKDNFLEVPNLSDSLCEDEEVTFQPGFSPQPSRRGSDSSEDIYLDTPSSGTRRVSFADSF
 GFNLVSVKEFDCWELPSASTTFDLGTDIFHTEEYVLAPLFDLPSSKEDLMQQLQIQKAILESTESLLGST
 SIKGIIRVLNVSEKLVYVRMSLDDWQTHYDILAEYVPNSCDGETDQFSFKIVLVPPYQKDGSKVEFCIR
 YETSVGTFWSNNGTNYTFICQKKEQEPEPVKPKWEVQPNRQIKGCLKVKSSKEESSVTSEENNFENPKNT
 DTYIPTIICSHEDKEDLEASNRNVKDVNREHDEHNEKELELMINQHLIRTRSTASRDERNTFSTDPVNF
 NKAEGLEKKQIHGEICTDLFQRSLSPSSSAESSVKGFYCNKYSSGDDCTHQPSEETSNMGEIKPSLG
 DTSSDELVQLHTGSKEVLDDNANPAHGNGTMQIPCPSSDQLMAGNLNKKHEGGAKKIEVKDLGCLRRDFH
 SDTSACLKESTEEGSKEDDYNGKDDDEEQRIYLVGNEKQRKNFQTLHDQERKMGNPKISVAGIGASNR
 DLATLLSEHTAIPTRAITADVSHSPRTNLSWEEAVLTPEHHHTSEGSALGGITGQVCSRTGNVLRNDY
 LFQVEEKSGGINSQDNQSPQHKQSWNVLESQKSRNKNTIETIKGQTDCEVWVKRDNTRSLKATTE
 ELFTCQETVCCLESSLADHGITEKAEAGTAYIIKTTSESTPESMSAREKAIIAKLPQETARSDRP
 IEVKE TAFDPHEGRNDDSHYTLQQRDTVGVYIDNDFEKESRLGICNVRVDEMEKEETMSMYNPRKTHDREKCGTG
 NITSVEESSWVITEYQKATSKLDLQLGMLPTDKTVFSENDRHRQVQELSKKTDSDAIVHSAFNSDTNRAP
 QNSSPFSKHHTEISVSTNEQAIAVENAVTMSAQPISTKSENICNSTREIQGIEKHPYPSKPEEVSRS
 GIVTSGSRKERCIQIFQTEEYSVEKSLGPMILINKPLENMEEARHENEGLVSSGQSLYTSGEKESDSSA
 STSLPVEESQAQGNESLFSKYTNSKIPYFLLFLIFLITVYHYDLMIGLTFYVLSLWLSWEEGRQKESVK
 KK

TRTRPLE – GFP Tag – V

Restriction Sites: SgfI-MluI

Cloning Scheme:

Cloning sites used for ORF Shuttling:



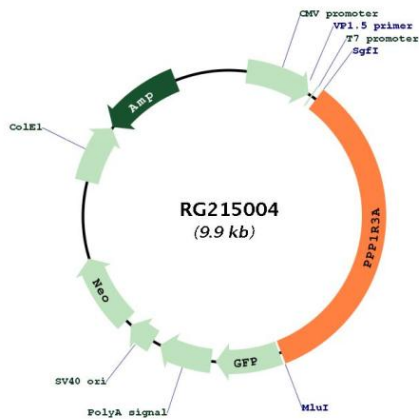
ACCN: NM_002711

ORF Size: 3366 bp

OTI Disclaimer: The molecular sequence of this clone aligns with the gene accession number as a point of reference only. However, individual transcript sequences of the same gene can differ through naturally occurring variations (e.g. polymorphisms), each with its own valid existence. This clone is substantially in agreement with the reference, but a complete review of all prevailing variants is recommended prior to use. [More info](#)

OTI Annotation:	This clone was engineered to express the complete ORF with an expression tag. Expression varies depending on the nature of the gene.
Components:	The ORF clone is ion-exchange column purified and shipped in a 2D barcoded Matrix tube containing 10ug of transfection-ready, dried plasmid DNA (reconstitute with 100 ul of water).
Reconstitution Method:	<ol style="list-style-type: none"> 1. Centrifuge at 5,000xg for 5min. 2. Carefully open the tube and add 100ul of sterile water to dissolve the DNA. 3. Close the tube and incubate for 10 minutes at room temperature. 4. Briefly vortex the tube and then do a quick spin (less than 5000xg) to concentrate the liquid at the bottom. 5. Store the suspended plasmid at -20°C. The DNA is stable for at least one year from date of shipping when stored at -20°C.
RefSeq:	<u>NM_002711.2, NP_002702.1</u>
RefSeq Size:	6779 bp
RefSeq ORF:	3369 bp
Locus ID:	5506
UniProt ID:	<u>Q16821</u>
Cytogenetics:	7q31.1
Protein Families:	Druggable Genome, Phosphatase, Transmembrane
Protein Pathways:	Insulin signaling pathway
Gene Summary:	The glycogen-associated form of protein phosphatase-1 (PP1) derived from skeletal muscle is a heterodimer composed of a 37-kD catalytic subunit and a 124-kD targeting and regulatory subunit. This gene encodes the regulatory subunit which binds to muscle glycogen with high affinity, thereby enhancing dephosphorylation of glycogen-bound substrates for PP1 such as glycogen synthase and glycogen phosphorylase kinase. [provided by RefSeq, Jul 2008]

Product images:



Circular map for RG215004