

Product datasheet for **RG214964**

RHBDF2 (NM_001005498) Human Tagged ORF Clone

Product data:

Product Type:	Expression Plasmids
Product Name:	RHBDF2 (NM_001005498) Human Tagged ORF Clone
Tag:	TurboGFP
Symbol:	RHBDF2
Synonyms:	iRhom2; RHBDL5; RHBDL6; TEC; TOC; TOCG
Mammalian Cell Selection:	Neomycin
Vector:	pCMV6-AC-GFP (PS100010)
E. coli Selection:	Ampicillin (100 ug/mL)



[View online »](#)

ORF Nucleotide
Sequence:

>RG214964 representing NM_001005498
Red=Cloning site Blue=ORF Green=Tags(s)

TTTTGTAATACGACTCACTATAGGGCGGCCGGGAATTCGTCGACTGGATCCGGTACCGAGGAGATCTGCC
GCC**CGGATCGCC**

ATGGCCTCTGCTGACAAGAATGGCGGGAGCGTGTCTCTGTGTCCAGCAGCCGCCTCGAGAGCCGGAAGC
CACCCAACCTCTCCATCACCATCCCGCCACCCGAGAAAGAGACCCAGGCCCTGGCGAGCAGGACAGCAT
GCTGCCTGAGAGGAAGAACCAGCCTACTTGAAGAGCGTCAGCCTCCAGGAGCCACGCAGCCGATGGCAG
GAGAGTTCAGAGAAGCGCCCTGGCTTCCGCCGCCAGGCCCTCACTGTCCAGAGCATCCGCAAGGGCGCAG
CCCAGTGGTTTGGAGTCAGCGGCGACTGGGAGGGGCGAGCGGCAGCAGTGGCAGCGCCGACGCTGCACCA
CTGCAGCATGCGCTACGGCCGCCTGAAGGCCTCGTGCCAGCGTGACCTGGAGCTCCCCAGCCAGGAGGCA
CCGTCTTCCAGGGCACTGAGTCCCAAAGCCCTGCAAGATGCCAAGATTGTGGATCCGCTGGCCCGGG
GCCGGGCTTCCGCCACCCGAGGAGATGGACAGGCCCCAGCCCGCACCCACCCTGACCCCGGAGT
CCTGTCCCTCACCTCCTTACCAGTGTCCGTTCTGGCTACTCCACCTGCCACGCCGCAAGAGAATGTCT
GTGGCCACATGAGCTTGAAGCTGCCGCTGCCCTCCTCAAGGGGCGCTCGGTGCTGGATGCCACCGGAC
AGCGGTGCCGGTGGTCAAGCGCAGCTTTCCTTCCCGAGCTTCTGGAGGAGGATGTGGTTCGATGGGGC
AGACACGTTTACTCCTCTTTTGTAGTAAGGAAGAAATGAGCTCCATGCCTGATGATGTCTTTGAGTCC
CCCCACTCTCTGCCAGTACTTCCGAGGGATCCACACTCAGCCTCCCTGTCTCCCCGATGGGGTGC
AAATCCCTCTGAAGGAGTATGGCCGAGCCCAAGTCCCGGGCCCCGGCGCGGCAAGCGCATCGCCTCAA
GGTGAAGCACTTTGCCTTGTATCGGAAGAAGCGGCACTACGGCTCGGCGTGGTGGGCAACTGGCTGAAC
CGCAGTACCGCCGAGCATCAGCAGCACTGTGCAGCGGCACTGGAGAGCTTCGACAGCCACCGGCCCT
ACTTCACCTACTGGCTGACCTTCGTCCATGTATCATCACGCTGCTGGTATTGACATGGCATGGC
TCCCGTGGGCTTTGCCACAGCACGTCAACCACAGCTGGTGTGCGGAACAAGGTGTGTACGAGAGCGTG
AAGTACATCCAGCAGGAGAACTTCTGGGTGGCCCCAGCTCGATTGACCTGATCCACCTGGGGGCAAGT
TCTCACCTGCATCCGGAAGGACGGGAGATCGAGCAGCTGGTGTGCGCGAGCGAGACCTGGAGCGGGA
CTCAGGCTGTGTGTCCAGAATGACCACTCCGGATGCATCCAGACCCAGCGGAAGGACTGCTCGGAGACT
TTGGCCACTTTTGTCAAGTGGCAGGATGACACTGGGCCCCCCATGGACAAGTCTGATCTGGGCCAGAAGC
GGACTTCGGGGGCTGTCTGCCACCAGGACCCAGGACCTGCGAGGAGCCAGCCTCCAGCGGTGCCACAT
CTGGCCCAGTACATCAAGTGGCCGATCTGCACAGAGCAGGCCAGGAGCAACCACACAGGCTTCTCTG
CACATGGACTGCGAGATCAAGGGCCGCCCTGCTGCATCGGCACCAAGGGCAGCTGTGAGATCACCAACC
GGGAATACTGTGAGTTTATGCACGGCTATTTCCATGAGGAAGCAACTCTGCTCCAGGTGCACTGCTT
GGACAAGGTGTGTGGGCTGCTGCCCTTCTCAACCCTGAGGTCCCAGATCAGTTCTACAGGCTCTGGCTG
TCTCTTCTTCTACATGCTGGCGTGGTGCCTCGTGTCTGTGGTCTTTCAAATGACCATCCTGAGGG
ACCTGGAGAAGCTGGCCGGCTGGCACCGTATCGCCATCATCTTATCCTCAGTGGCATCACAGGCAACCT
CGCCAGTGCCATCTTCTCCATACCGGGCAGAGGTGGGCCCGGCCGGCTCACAGTTCGGCTCCTCGCC
TGCCCTTTCGTGGAGCTTTCAGAGCTGGCCGCTGCTGGAGAGGCCCTGGAAGGCCTTCTCAACCTCT
CGGCCATCGTGTCTTCTGTTTCTGTGGCTCCTGCCCTGGATCGACAACATCGCCACATCTTCGG
CTTCTCAGTGGCCTGCTGCTGGCCTTCGCCTTCTGCCCTACATCACCTTCGGCACCGGACAGGATAC
CGCAAGCGGGCACTCATCTGGTGTCACTGCTGGCCTTTCGCCGGCTTTCGCCCGCCTCGTGTGGC
TGTACATCTACCCATTAAGTGGCCCTGGATCGAGCACCTCACCTGCTTCCCCTTACCAGCGCTTCTG
CGAGAAGTATGAGCTGGACCAGGTGCTGCAC

ACCGTACGCGGCCGCTCGAG - GFP Tag - GTTTAA

Protein Sequence: >RG214964 representing NM_001005498
 Red=Cloning site Green=Tags(s)

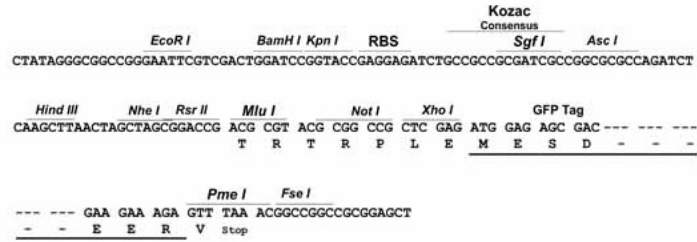
```
MASADKNGGSVSSVSSSRLQSRKPPNLSITIPPPEKETQAPGEQDSMLPERKNPAYLKSVSLQEPRSRWQ
ESSEKRPGFRRQASLSQSIRKGAAQWFGVSGDWEGQRQQWQRRSLHHCSMRYGRLKASCQRDLELPSQEA
PSFQGTESPKCKMPKIVDPLARGRAFRHPEEMDRPHAPHPPLTPGVLSLTSFTSVRSGYSHLPRKRMS
VAHMSLQAAAALLKGRSVLDATGQRCRVVKRSFAFPFLSEEDVVDGADTFDSSFFSKEEMSSMPDDVFES
PPLSASYFRGIPHSASPVSPDGVIPLKEYGRAPVPGPRRGKRIASKVKHFAFDRKKRHYGLGVVGNWLN
RSYRRISSTVQRQLESFDSHRPYFTYWLTFVHVIIITLLVICTYGIAPVGFAQHVTTLQLVLRNKGYESV
KYIQQENFWVGPSSIDL IHLGAKFSPCIRKDGQIEQLVLRERDLERDSGCCVQNDHSGCIQTQRKDCSET
LATFVKWQDDTGPPMDKSDLGQKRTSGAVCHQDPRTCEEPASSGAHIWPDDITKWPICTEQARSNHTGFL
HMDCEIKGRPCCIGTKGSCIEITREYCEFMHGYFHEEATLCSQVHCLDKVCGLLPFLNPEVPDQFYRLWL
SLFLHAGVVHCLVSVVFQMTILRDLEKLAGWHRIAIIFILSGITGNLASAIFLPYRAEVGPAGSQFGLLA
CLFVELFQSWPLLERPWKAFLNLSAIVLFLFICGLLPWIDNIAHIFGFLSGLLLAFALPYITFGTSDKY
RKRALILVSLLAFLAGLFAALVLWLYIYPINWPWIEHLTCFPFTRFCEKYELDQVLH
```

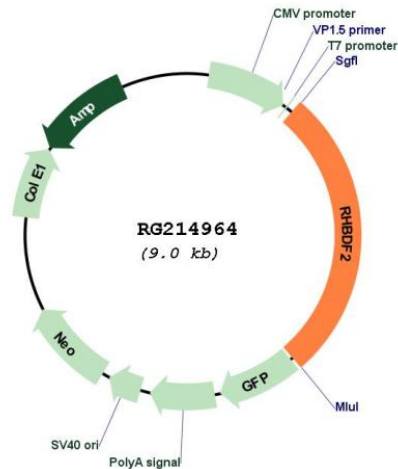
TRTRPLE - GFP Tag - V

Restriction Sites: Sgfl-MluI

Cloning Scheme:

Cloning sites used for ORF Shutting:



Plasmid Map:


ACCN: NM_001005498

ORF Size: 2481 bp

OTI Disclaimer: The molecular sequence of this clone aligns with the gene accession number as a point of reference only. However, individual transcript sequences of the same gene can differ through naturally occurring variations (e.g. polymorphisms), each with its own valid existence. This clone is substantially in agreement with the reference, but a complete review of all prevailing variants is recommended prior to use. [More info](#)

OTI Annotation: This clone was engineered to express the complete ORF with an expression tag. Expression varies depending on the nature of the gene.

Components: The ORF clone is ion-exchange column purified and shipped in a 2D barcoded Matrix tube containing 10ug of transfection-ready, dried plasmid DNA (reconstitute with 100 ul of water).

Reconstitution Method:

1. Centrifuge at 5,000xg for 5min.
2. Carefully open the tube and add 100ul of sterile water to dissolve the DNA.
3. Close the tube and incubate for 10 minutes at room temperature.
4. Briefly vortex the tube and then do a quick spin (less than 5000xg) to concentrate the liquid at the bottom.
5. Store the suspended plasmid at -20°C. The DNA is stable for at least one year from date of shipping when stored at -20°C.

RefSeq: [NM_001005498.4](#)

RefSeq Size: 3453 bp

RefSeq ORF: 2484 bp

Locus ID: 79651

UniProt ID: [Q6PIF5](#)

Cytogenetics: 17q25.1

Protein Families: Protease, Transmembrane

Gene Summary: Regulates ADAM17 protease, a sheddase of the epidermal growth factor (EGF) receptor ligands and TNF, thereby plays a role in sleep, cell survival, proliferation, migration and inflammation. Does not exhibit any protease activity on its own.[UniProtKB/Swiss-Prot Function]