

Product datasheet for **RG214961**

AGL (NM_000645) Human Tagged ORF Clone

Product data:

Product Type:	Expression Plasmids
Product Name:	AGL (NM_000645) Human Tagged ORF Clone
Tag:	TurboGFP
Symbol:	AGL
Synonyms:	GDE
Mammalian Cell Selection:	Neomycin
Vector:	pCMV6-AC-GFP (PS100010)
E. coli Selection:	Ampicillin (100 ug/mL)
ORF Nucleotide Sequence:	>RG214961 representing NM_000645 Red=Cloning site Blue=ORF Green=Tags(s)

TTTTGTAATACGACTCACTATAGGGCGGCCGGAATTCGTCGACTGGATCCGGTACCGAGGAGATCTGCC
GCC**CGATCGCC**

ATGAGTTTATTAACATGTGCTTTTTATTTAGGGTATGAGCTACAGTTCGATTAGGCCAACTTTACAGG
GAAAAGCAGTTACCGTGATACAAATTACCCATTTCTGGAGAAACATTTAATAGAGAAAAATCCGTTC
TCTGGATTGGGAAAATCCAACAGAAAGAGAAGATGATTCTGATAAATACTGTAACCTAATCTGCAACAA
TCTGGTTCATTTAGTATTATTTCTTCAAGGAAATGAGAAAAGTGGTGGAGGTTACATAGTTGTGGACC
CCATTTTACGTGTTGGTCTGATAATCATGTGCTACCCTTGGACTGTGTTACTCTTCAGACATTTTTAGC
TAAGTGTTTGGGACCTTTTGATGAATGGGAAAGCAGACTTAGGGTTGCAAAAGAATCAGGCTACAACATG
ATTCATTTTACCCATTGCAGACTCTTGGACTATCTAGGTCATGCTACTCCCTTGCCAATCAGTTAGAAT
TAAATCCTGACTTTTCAAGACCTAATAGAAAGTATACCTGGAATGATGTTGGACAGCTAGTGGAAAAAT
AAAAAAGGAATGGAATGTTATTTGTATTACTGATGTTGTCTACAATCATACTGCTGCTAATAGTAAATGG
ATCCAGGAACATCCAGAATGTGCCTATAATCTTGTGAATCTCCACACTTAAAACCTGCCTGGTCTTAG
ACAGAGCACTTTGGCGTTTCTCCTGTGATGTTGCAGAAGGGAAAATACAAAGAAAAGGGAATACCTGCTTT
GATTGAAAATGATCACCATATGAATCCATCCGAAAAATAATTTGGGAGGATATTTTTCCAAGCTTAA
CTCTGGGAATTTTCCAAGTAGATGTCAACAAAGCGGTTGAGCAATTTAGAAGACTTCTTACACAAGAAA
ATAGGCGAGTAACCAAGTCTGATCCAAACCAACACCTTACGATTATTCAAGATCCTGAATACAGACGGTT
TGGCTGTACTGTAGATATGAACATTGCACTAACGACTTTCATACCACATGACAAGGGGCCAGCAGCAATT
GAAGAATGCTGTAATGGTTTCATAAAAAGAAATGGAGGAATTAATTCAGAGAAGCATCGACTCATTAACT
ATCATCAGGAACAGGCAGTTAATTGCCTTTTGGGAAATGTGTTTTATGAACGACTGGCTGGCCATGGTCC
AAAACCTAGGACCTGTCACTAGAAAGCATCTTTAGTTACCAGGTATTTACTTTCCCATTTGAAGAGATA
GACTTCTCCATGGAAGAATCTATGATTCATCTGCCAAATAAAGCTTGTCTTCTGATGGCACACAATGGAT
GGGTAATGGGAGATGATCCTCTTCGAACTTTGCTGAACCGGTTTCAGAAGTTTACCTAAGGAGAGAACT
TATTTGCTGGGAGACAGTGTTAAATTACGCTATGGGAATAAACCAGAGGACTGTCCTTATCTCTGGCA



[View online >](#)

CACATGAAAAATACACTGAAATAACTGCAACTTATTTCCAGGGAGTACGTCTTGATAACTGCCACTCAA
CACCTCTTCACGTAGCTGAGTACATGTTGGATGCTGCTAGGAATTTGCAACCCAATTTATATGTAGTAGC
TGAAGTGTTCACAGGAAGTGAAGATCTGGACAATGTCTTTGTTACTAGACTGGGCATTAGTTCCTTAATA
AGAGAGGCAATGAGTGCATATAATAGTCATGAAGAGGGCAGATTAGTTTACCGATATGGAGGAGAACCTG
TTGGATCCTTTGTTACGCCCTGTTTGGGCCTTAAATGCCAGCTATTGCACATGCCCTGTTTATGGATAT
TACGCATGATAATGAGTGTCTATTGTGCATAGATCAGCGTATGATGCTCTTCCAAGTACTACAATTGTT
TCTATGGCATGTTGTGCTAGTGGAAAGTACAAGAGGCTATGATGAATTAGTGCCTCATCAGATTTTCAGTGG
TTTCTGAAGAACGGTTTTACACTAAGTGGAAATCCTGAAGCATTGCCTTCAAACACAGGTGAAGTTAATTT
CCAAAGCGGCATTATTGCAGCCAGGTGTCTATCAGTAACTTCATCAGGAGCTTGGAGCCAAGGTTTTT
ATTCAGGTGTATGTGGATCAAGTTGATGAAGACATAGTGGCAGTAAACAAGACTCACCTAGCATCCATC
AGTCTGTTGTGGCTGTATCTAGAAGTCTTTCAGGAATCCAAGACTTCATTTTACAGCAAGGAAGTGCC
TCAAATGTGCATCCCTGGCAAAATTGAAGAAGTAGTCTTGAAGCTAGAAGTATTGAGAGAAACACGAAA
CCTTATAGGAAGGATGAGAATTCATCAATGGAACACCAGATATCACAGTAGAAATTAGAGAACATATTC
AGCTTAATGAAAGTAAAATTGTTAAACAAGCTGGAGTTGCCACAAAAGGGCCCAATGAATATATTCAAGA
AATAGAATTTGAAAAGTGTCTCCAGGAAGTGTATTATATTAGAGTTAGTCTTGATCCACATGCACAA
GTCGCTGTTGGAATTCCTCGAAAATCATCTGACACAATTCAGTCCCACTTAAATCTGGCAGCCTAGCTG
TTGACAATGCAGATCCTATATTAATAATTCCTTTTGTCTCTTGCCTCCAGATTAACCTTTGGCTGAGCT
AAATCAGATCCTTACCAGTGTGAATCAGAAGAAAAGGAAGATGGTGGAGGGTGCATGACATACAAAAC
TGGTCAGCCCTTAAATATGCAGGTCTTCAAGGTTAATGTCTGTATTGGCAGAAAAGACCAAAGAATG
ACTTGGGGCATCCTTTTGTAAATAATTTGAGATCTGGAGATTGGATGATTGACTATGTCAGTAACCGGT
TATTTACAGATCAGGAATTTGCTGAAGTTGGTAAATGGTGCAGGCTATGTTCTTCTACCTGAAGCAG
ATCCCACGTTACCTATCCCATGTTACTTTGATGCTATATTAATGGTGCATATACCACCTTCTGGATA
CAGCATGGAAGCAGATGTCAAGCTTTGTTTCAGAAATGGTTCACACTTTGTGAAACACCTTTTCATGGTTC
AGTTCAACTGTGTGGAGTAGGAAAATTCCTTCCCTGCCAATTCCTTACCTGCCCTAATGGATGTACCT
TATAGGTTAAATGAGATCACAAAAGAAAAGGAGCAATGTTGTGTTTCTCTAGCTGCAGGCTTACCTCATT
TTTCTTCTGGTATTTTCCGCTGCTGGGGAAGGGATACTTTTATTGCACTTAGAGGTATACTGCTGATTAC
TGGACGCTATGTAGAAGCCAGGAATATTAATTTAGCATTGCGGGTACCCTGAGGCATGGTCTCATTCTCT
AATCTACTGGGTGAAGGAATTTATGCCAGATACAATTGTCGGGATGCTGTGTGGTGGTGGCTGCAGTGTA
TCCAGGATTACTGTAATAATGGTTCAAAATGGTCTAGACATTCTCAAGTCCCAGTTTCCAGAATGTATCC
TACAGATGATTCTGCTCCTTTGCCTGCTGGCACACTGGATCAGCCATTGTTTGAAGTCATACAGGAAGCA
ATGCAAAAACACATGCAGGGCATACAGTCCGAGAAAAGGAATGCTGGTCCCAGATAGATCGAAACATGA
AGGACGAAGGTTTTAATAAAGTGCAGGAGTTGATGAAGAAACAGGATTTGTTTATGGAGGAAATCGTTT
CAATTGTGGCAGATGGATGGATAAAAATGGGAGAAAAGTACAGAGCTAGAAAACAGAGGAATCCCAGCCACA
CCAAGAGATGGGTCTGCTGTGGAATTTGTGGCCCTGAGTAAATCTGCTGTTTCGCTGGTGTGGAATTAT
CCAAAAAAAATATTTTCCCTTATCATGAAGTACAGTAAAAGACATGGAAGGGCTATAAAGGTCTCATA
TGATGAGTGGAAACAGAAAAATACAAGACAACCTTTGAAAAGCTATTTTCATGTTTCCGAAGACCCTTCAGAT
TTAAATGAAAAGCATCCAAATCTGGTTCACAAACGTGGCATATACAAAGATAGTTATGGAGCTTCAAGTC
CTTGGTGTGACTATCAGCTCAGGCCTAATTTTACCATAGCAATGGTGTGGCCCTGAGCTCTTACTAC
AGAAAAAGCATGGAAGCTTTGGAGATTGCAGAAAAAAAATGCTTGGTCCCCTTGGCATGAAAACCTTAA
GATCCAGATGATATGGTTTACTGTGGAATTTATGACAATGCATTAGACAATGACAACATAAATCTTGCTA
AAGGTTTCAATTATACCAAGGACCTGAGTGGCTGTGGCCTATTGGGATTTTTCTTCGTGCAAAAATTATA
TTTTTCCAGATTGATGGGCCCGGAGACTACTGCAAGACTATAGTTTTGGTTAAAATGTTCTTTCCCGA
CATTATGTTTCATCTTGAGAGATCCCCTTGGAAAGGACTTCCAGAAGTACCAATGAGAATGCCAGTACT
GTCCTTTCAGCTGTGAAACACAAGCCTGGTCAATTGCTACTATTCTTGAGACACTTTATGATTTA

ACGCGTACGCGGCCGCTCGAG - GFP Tag - GTTTAA

Protein Sequence: >RG214961 representing NM_000645
 Red=Cloning site Green=Tags(s)

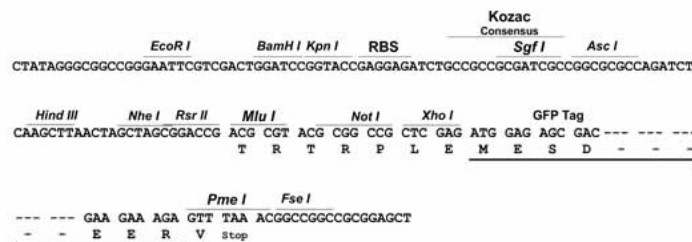
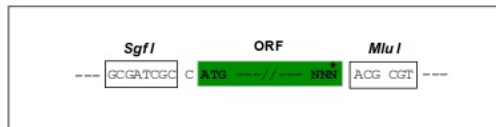
```
MSLLTCAFYLYGELQFRLGPTLQGKAVTVYTNYPFPGETFNREKFRSLDWNPTEREDSDKYCKLNLQQ
SGSFQYYFLQGNEKSGGGYIVVDPILRVGADNHVLPDVCVTLQTLAKCLGPFDEWESRLRVAKESGYNM
IHFTPLQTLGLSRSCYSLANQLELNPDFSRPNRYTWNVDVQGLVEKLLKEWNVICITDVVYNHTAANSKW
IQEHPECAYNLVNSPHLKPWVLDRLWRFSCDVAEGKYKEKIPAL IENDHHMNSIRKIIWEDIFPKLK
LWEFQVDVKNKAVEQFRLLTQENRRVTKSDPNQHLTIIQDPEYRRFGCTVDMNIALTTFIPHDKGPAAI
EECCNWFHHRMEELNSEKHRLINYHQEQAVNCLLGNVYERLAGHGPKLGPVTRKHPLVTRYFTPFEEI
DFSMEESIHLNPKACFLMAHNGWVMGDDPLRNFAEPGSEVYLRRELICWGDSVKLRYGNKPEDCPYLWA
HMKKYTEITATYFQGVRLDNCHSTPLHVAEYMLDAARNLQPNLYVVAELFTGSEDLDNVTVTRLGISLI
REAMSAYNSHEEGRVYRYGGPEVGSFVQPCRLPLMPAIAHALFMDITHNECPIVHRSAYDALPSTTIV
SMACCASGSTRGYDELVPHQISVVSEERFYTKWNPEALPSNTGEVNFQSGIIAARCAISKLHQELGAKGF
IQVYVDQVDEDIVAVTRHSPSIHQSVVAVSRTAFRNPKTSFYSKEVPQMCIPGKIEEVVLEARTIERNTK
PYRKDENSINGTPDITVEIREHIQLNESKIVKQAGVATKGPNEYIQEIEFENLSPGSVIFRVSLDPHAQ
VAVGILRNHLTQFSPHKSGSLAVDNADPILKIPFASLASRLTLAELNQLYRCSEEEKEDGGGCGYDIPN
WSALKYAGLQGLMSVLAERPKNDLGHFPCNNLRSGDWMIDYVSNRLISRSGTIAEVGKWLQAMFFYLKQ
IPRYLIPCYFDAILIGAYTTLLDTAWKQMSFVQNGSTFVKHLSLGSVQLCGVGKFPSPILSPALMDVP
YRLNEITKEKEQCCVSLAAGLPHFSSGIFRCWGRDTFIALRGILLITGRYVEARNIILAFAGTLRHGLIP
NLLGEGIYARYNCRDAVWWWLQCIQDYCKMVPNGLDILKCPVSRMYPTDSDAPLPAGTLDQPLFEVIQEA
MQKHMQGIQFRERNAGPQIDRNMKDEGFNITAGVDEETGFVYGGNRFNCGTWMDKMGESDRARNRGIPAT
PRDGSATIVEGLSKSAVRWLELLESKKNIFPYHEVTVKRHGKAIKVSYDEWNRKIQDNFEKLFHVSDEPDS
LNEKHPLVHKRGIYKDSYGASSPWCDYQLRPNFTIAMVVAPELFTTEKAWKALEIAEKLLGPLGMKTL
DPDDMVYCGIYDNALDNDNYNLAKGFNYHQPEWLWPIGYFLRAKLYFSRLMGPETTAKTIVLVKNVLSR
HYVHLERSPWKGLPELTNENAQCPFSCTQAWSIATILETLYDL
```

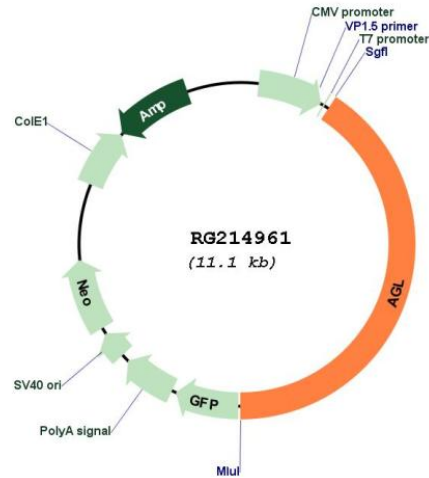
TRTRPLE - GFP Tag - V

Restriction Sites: SgfI-MluI

Cloning Scheme:

Cloning sites used for ORF Shutting:



Plasmid Map:


ACCN: NM_000645

ORF Size: 4545 bp

OTI Disclaimer: The molecular sequence of this clone aligns with the gene accession number as a point of reference only. However, individual transcript sequences of the same gene can differ through naturally occurring variations (e.g. polymorphisms), each with its own valid existence. This clone is substantially in agreement with the reference, but a complete review of all prevailing variants is recommended prior to use. [More info](#)

OTI Annotation: This clone was engineered to express the complete ORF with an expression tag. Expression varies depending on the nature of the gene.

Components: The ORF clone is ion-exchange column purified and shipped in a 2D barcoded Matrix tube containing 10ug of transfection-ready, dried plasmid DNA (reconstitute with 100 ul of water).

Reconstitution Method:	<ol style="list-style-type: none">1. Centrifuge at 5,000xg for 5min.2. Carefully open the tube and add 100ul of sterile water to dissolve the DNA.3. Close the tube and incubate for 10 minutes at room temperature.4. Briefly vortex the tube and then do a quick spin (less than 5000xg) to concentrate the liquid at the bottom.5. Store the suspended plasmid at -20°C. The DNA is stable for at least one year from date of shipping when stored at -20°C.
RefSeq:	NM_000645.2 , NP_000636.2
RefSeq Size:	7182 bp
RefSeq ORF:	4548 bp
Locus ID:	178
Cytogenetics:	1p21.2
Protein Families:	Druggable Genome
Protein Pathways:	Metabolic pathways, Starch and sucrose metabolism
Gene Summary:	<p>This gene encodes the glycogen debrancher enzyme which is involved in glycogen degradation. This enzyme has two independent catalytic activities which occur at different sites on the protein: a 4-alpha-glucotransferase activity and a amylo-1,6-glucosidase activity. Mutations in this gene are associated with glycogen storage disease although a wide range of enzymatic and clinical variability occurs which may be due to tissue-specific alternative splicing. Alternatively spliced transcripts encoding different isoforms have been described. [provided by RefSeq, Jul 2008]</p>