

Product datasheet for **RG214937**

MYLK4 (NM_001012418) Human Tagged ORF Clone

Product data:

Product Type: Expression Plasmids
Product Name: MYLK4 (NM_001012418) Human Tagged ORF Clone
Tag: TurboGFP
Symbol: MYLK4
Synonyms: SgK085
Vector: pCMV6-AC-GFP (PS100010)
E. coli Selection: Ampicillin (100 ug/mL)
Cell Selection: Neomycin
ORF Nucleotide Sequence: >RG214937 representing NM_001012418
Red=Cloning site Blue=ORF Green=Tags(s)

TTTTGTAATACGACTCACTATAGGGCGCCGGAATTCGTCGACTGGATCCGGTACCGAGGAGATCTGCC
GCC**CGGATCGCC**

ATGTTAAAAGTGAAGAGGCTGGAAGAATCAACACGTGTTATAACAGCAACCAGCTGGAGAAAATGGCCT
TTTTTCAGTGCAGGGAAGAGGTGGAGAAAGTGAAGTGTTCCTGGAAAAAATTCGGGGACCAGGATTC
AAGATCTAGACATAATGAGGCGAAGGAGGTGTGGTCAAACGCCGACCTGACGGAAAGGATGCCCGTCAAA
AGCAAAAGGACATCAGCCCTCGCAGTTGACATCCCGGCTCCTCCGGCCCCATTTGATCATCGTATTGTGA
CAGCCAAGCAAGGAGCGGTCAACAGCTTCTATACTGTGAGCAAGACAGAAATCCTAGGAGGAGGGCGTTT
CGGCCAGGTTCACAAGTGTGAGGAGACGGCCACAGGTCTGAAGCTGGCAGCCAAAATCATCAAGACCAGA
GGCATGAAGGACAAGGAGGAGGTGAAGAACGAGATCAGCGTCAATGAACCAGCTGGACCACGCGAACCTCA
TCCAGCTGTACGATGCCTTCGAGTCTAAGAACGACATTGTCTGGTCAATGGAGTATGTGGATGGTGGGA
GCTGTTTGACCGCATCATCGATGAGAGCTACAATTTGACGGAGCTTGATACCATCCTGTTTCATGAAGCAG
ATATGTGAGGGGATAAAGGCACATGCATCAGATGTACATTCTCCACTTGGACCTGAAGCCTGAGAATATCC
TGTGTGTAATCGGGATGCTAAGCAAATAAAAATTATTGATTTTGGATTGGCCAGAAGATACAAACCCAG
AGAGAAGCTGAAGGTGAACCTTTGGAACCCAGAATTTCTCGCCCTGAAGTTGTGAAGTATGATTTTGT
TCAATTTCCACTGACATGTGGAGTGTGGGGTTCATCGCCTATATGCTACTTAGCGGTTTGTGCGCTTTCC
TGGGTGACAATGATGCTGAGACGCTGAACAACATCCTGGCCTGCAGGTGGGACTTAGAGGATGAAGAATT
TCAGGACATCTCGGAGGAGGCCAAGGAGTTCATCTCTAAGCTTCTGATTAAGGAGAAGAGTTGGCGAATA
AGTGCAAGCGAAGCTCTCAAGCACCCCTGGTTGTCAGACCACAAGCTCCACTCCAGACTCAATGCCAGA
AGAAGAAGAAATCGTGGCTCTGATGCCAGGACTTTGTGACCAA

ACGCGTACGCGGCCGCTCGAG - GFP Tag - GTTTAA



[View online »](#)

Protein Sequence: >RG214937 representing NM_001012418
Red=Cloning site Green=Tags(s)

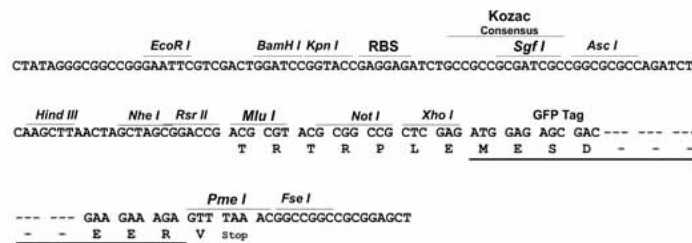
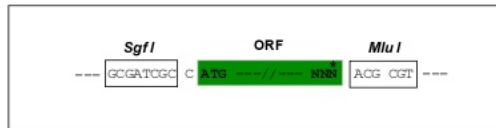
MLKVKRLEEFNTCYNSNQLEKMAFFQCREEVEKVKCFLEKNSGDQDSRSRHNEAKEVWSNADLTERMPVK
 SKRTSALAVDIPAPPAPFDHRIVTAKQGAVNSFYTVSKTEILGGGRFGQVHKCEETATGLKLAAKIIKTR
 GMKDKEEVKNEISVMNQLDHANLIQLYDAFESKNDIVL VMEYVDGGELFDRIIDESYNL TELDTILFMKQ
 ICEGIRHMHQMYILHLDLKPENILCVNRDAKQIKIIDFGLARRYKPREKLKVNFGTPEFLAPEVVNYDFV
 SFPTDMWSVGVIAYMLLSGLSPFLGDND AETLNNILACRWDLEDEEFQDISEEAK E FISKLLIKEKSWRI
 SASEALKHPWLS DHK LHSRLNAQKKNRGSDAQDFVTK

TRTRPLE - GFP Tag - V

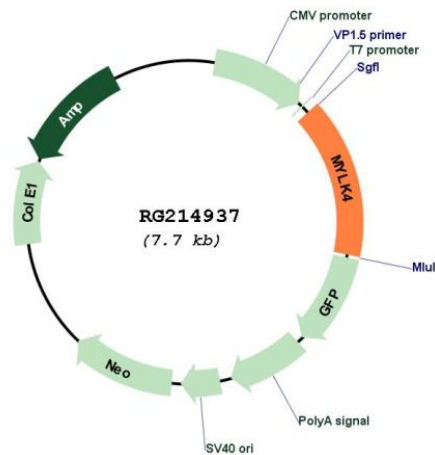
Restriction Sites: SgfI-MluI

Cloning Scheme:

Cloning sites used for ORF Shuttling:



Plasmid Map:



ACCN: NM_001012418

ORF Size:	1164 bp
OTI Disclaimer:	The molecular sequence of this clone aligns with the gene accession number as a point of reference only. However, individual transcript sequences of the same gene can differ through naturally occurring variations (e.g. polymorphisms), each with its own valid existence. This clone is substantially in agreement with the reference, but a complete review of all prevailing variants is recommended prior to use. More info
OTI Annotation:	This clone was engineered to express the complete ORF with an expression tag. Expression varies depending on the nature of the gene.
Components:	The ORF clone is ion-exchange column purified and shipped in a 2D barcoded Matrix tube containing 10ug of transfection-ready, dried plasmid DNA (reconstitute with 100 ul of water).
Reconstitution Method:	<ol style="list-style-type: none">1. Centrifuge at 5,000xg for 5min.2. Carefully open the tube and add 100ul of sterile water to dissolve the DNA.3. Close the tube and incubate for 10 minutes at room temperature.4. Briefly vortex the tube and then do a quick spin (less than 5000xg) to concentrate the liquid at the bottom.5. Store the suspended plasmid at -20°C. The DNA is stable for at least one year from date of shipping when stored at -20°C.
RefSeq:	NM_001012418.1 , NP_001012418.1
RefSeq Size:	5769 bp
RefSeq ORF:	1167 bp
Locus ID:	340156
UniProt ID:	Q86YV6
Cytogenetics:	6p25.2
Protein Families:	Druggable Genome, Protein Kinase