

Product datasheet for **RG214912**

CRISPLD2 (NM_031476) Human Tagged ORF Clone

Product data:

Product Type:	Expression Plasmids
Product Name:	CRISPLD2 (NM_031476) Human Tagged ORF Clone
Tag:	TurboGFP
Symbol:	CRISPLD2
Synonyms:	CRISP11; LCRISP2; LGL1
Mammalian Cell Selection:	Neomycin
Vector:	pCMV6-AC-GFP (PS100010)
E. coli Selection:	Ampicillin (100 ug/mL)



[View online »](#)

ORF Nucleotide Sequence:

>RG214912 representing NM_031476
 Red=Cloning site Blue=ORF Green=Tags(s)

TTTTGTAATACGACTCACTATAGGGCGGCCGGGAATTCGTCGACTGGATCCGGTACCGAGGAGATCTGCC
 GCC**CGGATCGCC**

ATGAGCTGCGTCCTGGGTGGTGTATCCCCTTGGGGCTGCTGTTCTGGTCTGCGGATCCCAAGGCTACC
 TCCTGCCCAACGTCCTCTTAGAGGAGCTGCTCAGCAAATACCAGCACAACGAGTCTCACTCCCGGGT
 CCGCAGAGCCATCCCCAGGGAGGACAAGGAGGAGATCCTCATGCTGCACAACAAGCTTCGGGGCCAGGTG
 CAGCCTCAGGCCTCCAACATGGAGTACATGACCTGGGATGACGAACTGGAGAAGTCTGCTGCAGCGTGGG
 CCAGTCAGTGCATCTGGGAGCACGGGCCACCAGTCTGCTGGTGTCCATCGGGCAGAACCTGGGCGCTCA
 CTGGGGCAGGTATCGCTCTCCGGGGTTCATGTGCAGTCTGGTATGACGAGGTGAAGGACTACACCTAC
 CCCTACCCGAGCGAGTGAACCCCTGGTGTCCAGAGAGGTGCTCGGGCCTATGTGCACGCACTACACAC
 AGATAGTTTGGGCCACCACAAGATCGTTGTGCTGTGAACACCTGCCGGAAGATGACTGTCTGGGG
 AGAAGTTTGGGAGAACCGGGTCTACTTTGTCTGCAATTATTCTCAAAGGGGAAGTGGATTGGAGAAGCC
 CCCTACAAGAATGCCCGGCCCTGCTCTGAGTGCCACCAGCTATGGAGGAGCTGCAGGAACAACCTGT
 GTTACCGAGAAGAACTACACTCCAAAACCTGAAACGGACGAGATGAATGAGGTGGAAACGGCTCCCAT
 TCCTGAAGAAAACCATGTTTGGCTCCAACCGAGGGTGTGAGACCACCAAGCCCAAGAAAACCTCTGCG
 GTCAACTACATGACCCAAGTCTGCAGATGTGACACCAAGTGAAGGACAGGTGCAAGGGTCCACGTGTA
 ACAGGTACCAGTGCCAGCAGGCTGCTGAACCACAAGGCGAAGATCTTTGGAACCTGTCTATGAAA
 CTCGTCTAGCATATGCCGCGCCCATCCACTACGGGATCCTGGATGACAAGGGAGGCTGGTGGATATC
 ACCAGGAACGGGAAGTCCCCTTCTCGTGAAGTCTGAGAGACACGGCGTGCAGTCCCTCAGCAAATACA
 AACCTTCAGCTCATTGCTGTTGTTGAAAAGTGAAGTGCAGGATTTGGACTGTACACGACCGTTGCTCA
 GCTGTGCCCGTTTGAAGAGCCAGCAACTACTGCCCAAGAATCCATTGTCCGGCACAAGGAGCAAGAGCA
 CCTTCTACTGGGCTCCGGTGTGTTGGAACCAACATCTATGCAGTACTCAAGCATCTGCAAGACAGCCG
 TGCACGCGGGAGTCATCAGCAACGAGAGTGGGGTGCAGTGGACGTGATGCCCGTGGATAAAAAGAAGAC
 CTACGTGGGCTCGCTCAGGAATGGAGTTCAGTCTGAAAGCCTGGGGACTCCTCGGGATGGAAGGCCCTC
 CGGATCTTTGCTGTCAGGCAG

ACGCGTACGCGGCCGCTCGAG – GFP Tag – GTTTAA

Protein Sequence:

>RG214912 representing NM_031476
 Red=Cloning site Green=Tags(s)

MSCVLGGVIPLGILLVCGSQGYLLPNVTLLLEELL SKYQHNEHSRVRRAIPREDKEEILMLHNKLRGQV
 QPQASNMEYMTWDELEKSAAAWASQCIWEHGPTSLLSIGQNLGAHWGRYRSPGFHVQSWYDEVKDYTY
 PYPSECNPWCPCERCSGPMCTHYTQIVWATTNKIGCAVNTCRKMTVWGEVWENAVYFVNCNYSKGNWIGEA
 PYKNGRPCSECPPSYGGSCRNNLCYREETYTPKETDEMNEVETAPIPEENHVWLQPRVMRPTKPKKTS
 VNYMTQVVRCDTKMKDRCKGSTCNRYQCPAGCLNHKAKIFGTLFYESSSSICRAAIHYGILDDKGLVDI
 TRNGKVPFFVKSERHGVQSLSKYKPSSSFMSKVKVQDLDCYTTVAQLCPFEPATHCPRIHCPAHCKDE
 PSYWAPVFGTNIYADTSSICKTAVHAGVISNESGGDVPVDDKKTIVGSLRNGVQSESLGTPRDGKAF
 RIFAVRQ

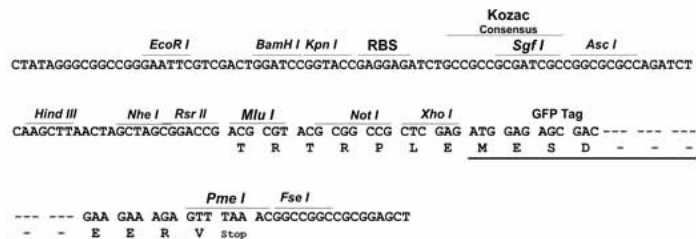
TRTRPLE – GFP Tag – V

Restriction Sites:

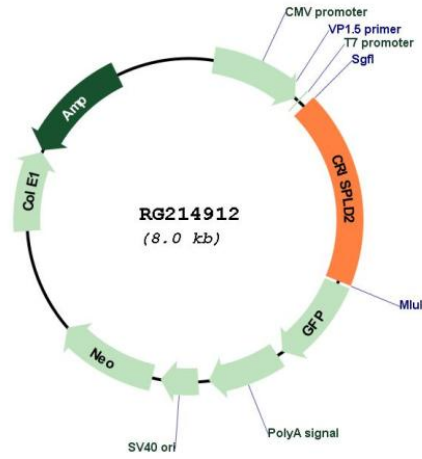
Sgfl-MluI

Cloning Scheme:

Cloning sites used for ORF Shutting:



Plasmid Map:



ACCN: NM_031476

ORF Size: 1491 bp

OTI Disclaimer: Due to the inherent nature of this plasmid, standard methods to replicate additional amounts of DNA in E. coli are highly likely to result in mutations and/or rearrangements. Therefore, OriGene does not guarantee the capability to replicate this plasmid DNA. Additional amounts of DNA can be purchased from OriGene with batch-specific, full-sequence verification at a reduced cost. Please contact our customer care team at custsupport@origene.com or by calling 301.340.3188 option 3 for pricing and delivery.

The molecular sequence of this clone aligns with the gene accession number as a point of reference only. However, individual transcript sequences of the same gene can differ through naturally occurring variations (e.g. polymorphisms), each with its own valid existence. This clone is substantially in agreement with the reference, but a complete review of all prevailing variants is recommended prior to use. [More info](#)

OTI Annotation: This clone was engineered to express the complete ORF with an expression tag. Expression varies depending on the nature of the gene.

Components: The ORF clone is ion-exchange column purified and shipped in a 2D barcoded Matrix tube containing 10ug of transfection-ready, dried plasmid DNA (reconstitute with 100 ul of water).

Reconstitution Method:

1. Centrifuge at 5,000xg for 5min.
2. Carefully open the tube and add 100ul of sterile water to dissolve the DNA.
3. Close the tube and incubate for 10 minutes at room temperature.
4. Briefly vortex the tube and then do a quick spin (less than 5000xg) to concentrate the liquid at the bottom.
5. Store the suspended plasmid at -20°C. The DNA is stable for at least one year from date of shipping when stored at -20°C.

RefSeq: [NM_031476.2](#)

RefSeq Size: 4574 bp

RefSeq ORF: 1494 bp

Locus ID: 83716

UniProt ID: [Q9H0B8](#)

Cytogenetics: 16q24.1

Domains: SCP, LCCL

Protein Families: Secreted Protein, Transmembrane

Gene Summary: Promotes matrix assembly.[UniProtKB/Swiss-Prot Function]