

Product datasheet for **RG214900**

NrCAM (NM_005010) Human Tagged ORF Clone

Product data:

Product Type:	Expression Plasmids
Product Name:	NrCAM (NM_005010) Human Tagged ORF Clone
Tag:	TurboGFP
Symbol:	NRCAM
Mammalian Cell Selection:	Neomycin
Vector:	pCMV6-AC-GFP (PS100010)
E. coli Selection:	Ampicillin (100 ug/mL)
ORF Nucleotide Sequence:	>RG214900 representing NM_005010 Red=Cloning site Blue=ORF Green=Tags(s)

TTTTGTAATACGACTCACTATAGGGCGGCCGGAATTCGTCGACTGGATCCGGTACCGAGGAGATCTGCC
GCC**CGATCGCC**

ATGCAGCTTAAAATAATGCCGAAAAAGAAGCGCTTATCTGCGGGCAGAGTGCCCTGATTCTCTTCTGT
GCCAGATGATTAGTGCAGTGAAGTACCTCTTGATCTGGTACAGCCTCCAACCATCACCAACAGTCTCC
AAAAGATTACATTATTGACCCTCGGGAGAATATTGTAATCCAGTGTGAAGCCAAAGGAAACCGCCCCA
AGCTTTTCTGGACCCGTAATGGGACTCATTTTGACATCGATAAAGACCCTCTGGTCACCATGATGAGCCTG
GCACAGGAACGCTCATAATTAACATCATGAGCGAAGGAAAGCTGAGACCTATGAAGGAGTCTATCAGTG
TACAGCAAGGAACGAACGCGGAGCTGCAGTTTCTAATAACATTGTTGTCGCCCATCCAGATCACCATTTG
TGGACCAAGAAAACTTGAACCAATCACACTTCAAAGTGGTCAGTCTTTAGTACTTCCCTGCAGACCCC
CAATTGGATTACCACCACCTATAATATTTGGATGGATAATTCCTTTCAAAGACTTCCACAAAGTGAGAG
AGTTTCTCAAGTTTGAATGGGGACCTTATTTTTCCAATGTCCTCCAGAGGACACCCGCGAAGACTAT
ATCTGTTATGCTAGATTTAATCATACTCAAACCATACAGCAGAAGCAACCTATTTCTGTGAAGGTGATTT
CAGTGGATGAATTGAATGACACTATAGCTGCTAATTTGAGTGACACTGAGTTTTATGGTGCTAAATCAAG
TAGAGAGAGGCCACCAACATTTTAACTCCAGAAGGCAATGCAAGTAACAAAGAGGAATTAAGAGGAAAT
GTGCTTCTACTGGAGTGCATTGCAGAAGGACTGCCTACCCCAATTTACTGGGCAAAGGAAGATGGAA
TGCTACCCAAAAACAGGACAGTTTATAAGAACTTTGAGAAAACCTTGAGATCATTATGTTTCAGAAAGC
AGACTCTGGAAATTACCAATGTATAGCAAAAAACGCATTAGGAGCCATCCACCATACCATTTCTGTTAGA
GTTAAAGCGGCTCCATACTGGATCACAGCCCCTCAAAATCTTGTGCTGTCCCAGGAGAGGATGGGACCT
TGATCTGCAGAGCTAATGGCAACCCCAACCCAGAATTAGCTGGTTAACAATGGAGTCCCAATAGAAAT
TGCCCTGATGACCCAGCAGAAAAATAGATGGCGATACCATTATTTTTCAAATGTTCAAGAAAGATCA
AGTGCAGTCTATCAGTGAATGCCTCTAATGAATATGGATATTTACTGGCAAACGCATTTGTAATGTGC
TGGCTGAGCCACCACGAATCCTCACACCTGCAACACACTCTACCAGTTCATTGCAACACGGCCTGCTTT
ACTAGCTGTGCCTTCTTTGGGCTCCTCTCCCAACCATCGAGTGGTTTAAAGGAGCTAAAGGAAGTGTCT
CTTCATGAAGATATTTATGTTTTACATGAAAATGGAACCTTTGAAAATTCCTGTGGCCCAAAAGACAGTA
CAGGAACCTTATACGTGTGTTGCAAGGAATAAATTAGGGATGGCGAAGAATGAAGTTCACCTTAGAAATCAA



[View online »](#)

AGATCCTACATGGATCGTTAAACAGCCCGAATATGCAGTTGTGCAAAGAGGGAGCATGGTGTCTTTGAA
 TGCAAAGTGAAACATGATCACACCTTATCCCTCACTGTCTGTGGCTGAAGGACAACAGGGAAGTCCCA
 GTGATGAAAGGTTCACTGTTGACAAGGATCATCTAGTGGTAGCTGATGTCAGTGACGATGACAGCGGGAC
 CTACACGTGTGTGGCCAACCACTCTGGACAGCGTCTCCGCCAGCGCTGTGCTTAGCGTTGTTGATGTC
 CCAATCCTCCCTTTGACTTAGAACTGACAGATCAACTTGACAAAAGTGTTCAGCTGTATGGACCCAG
 GCGATGACAACAATAGCCCCATTACAAAATTCATCATCGAATATGAAGATGCAATGCACAAGCCAGGGCT
 GTGGCACCAACAACTGAAGTTTCTGGAACACAGACCACAGCCAGCTGAAGCTGTCTCCTTACGTGAAC
 TACTCCTTCCGCGTGATGGCAGTGAACAGCATTGGGAAGAGCTTGCCAGCGAGGCGTCTGAGCAGTATT
 TGACGAAAGCCTCAGAACCAGATAAAAACCCACAGCTGTGGAAGGACTGGGATCAGAGCCTGATAATTT
 GGTGATTACGTGGAAGCCCTTGAATGGTTTCGAATCTAATGGGCCAGGCCTTCAGTACAAAGTTAGCTGG
 CGCCAGAAAGATGGTGATGATGAATGGACATCTGTGGTTGTGGCAAATGTATCCAAATATATTGTCTCAG
 GCACGCCAACCTTTGTTCCATACCTGATCAAAGTTCAGGCCCTGAATGACATGGGGTTTGCCCCGAGCC
 AGCTGTAGTCATGGGACATTCTGGAGAAGACCTCCCAATGGTGGCTCTGGGAACGTGCGTGTGAATGTG
 GTGAACAGTACCTTAGCCGAGGTGCACTGGGACCCAGTACCTCTGAAAAGCATCCGAGGACACCTACAAG
 GCTATCGGATTTACTATTGGAAGACCCAGAGTTTCTAAAAGAAACAGACGTCACATTGAGAAAAAGAT
 CCTCACCTTCCAAGGCAGCAAGACTCATGGCATGTTGCCGGGGCTAGAGCCCTTTAGCCACTACACACTG
 AATGTCCGAGTGGTCAATGGGAAAGGGAGGGCCAGCCAGCCCTGACAGAGTCTTTAATACTCCAGAAG
 GAGTCCCCAGTGCTCCCTCGTCTTTGAAGATTGTGAATCCAACACTGGACTCTCTCACTTTGGAATGGGA
 TCCACCGAGCCACCCGAATGGCATTGACAGAGTACACCTTAAAGTATCAGCCAATTAACAGCACACAT
 GAATTAGGCCCTCTGGTAGATTTGAAAATTCCTGCCAACAAAGACACGGTGGACTTTAAAAATTTAAATT
 TCAGCACTCGATAAAGTTTTATTTCTATGCACAAACATCAGCAGGATCAGGAAGTCAAATTACAGAGGA
 AGCAGTAAACAACGTGGATGAAGCGATGGCAAGCCGGCAGGTGGATATTGCAACTCAGGGCTGGTTCATT
 GGTCTGATGTGCTGTGCTCTCCTTATCTTAATTTTGTGATTGTTTGTCTTATCAGAAAGAAACGAGG
 GTGGTAAATATCCAGTTAAAGAAAAGGAAGATGCCCATGCTGACCTGAAATCCAGCCTATGAAGGAAGA
 TGATGGGACATTTGGAGAATACAGTGTGACAGAACCAAGCCTTTGAAAAAGGAAGTCAAGTCACTCT
 TCAGACAGGACTGTAAAAAAGAAGATAGTGACGACAGCCTAGTTGACTATGGAGAAGGGGTTAATGGCC
 AGTTCAATGAGGATGGCTCCTTTATTGGACAATACAGTGGTAAGAAAGAGAAAGGCCGGCTGAAGGAAA
 CGAAAGCTCAGAGGCACCTTCTCTGTCAACGCCATGAATTCCTTTGTT

ACGCGTACGCGGCCGCTCGAG – GFP Tag – GTTTAA

Protein Sequence:

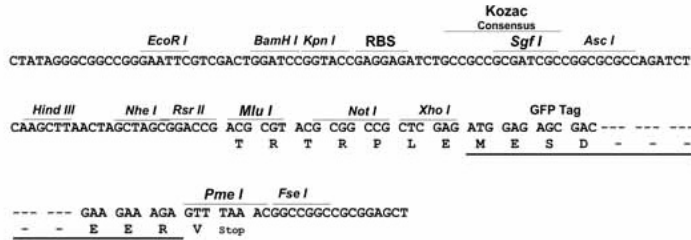
>RG214900 representing NM_005010
 Red=Cloning site Green=Tags(s)

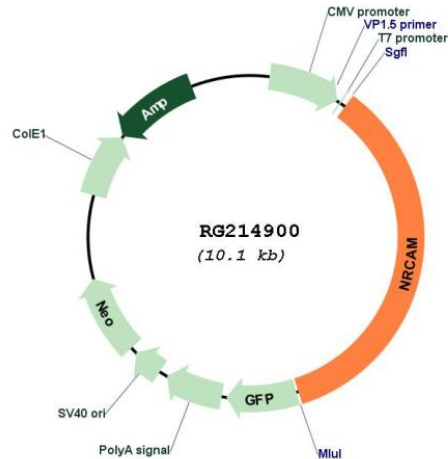
MQLKIMPKKKRLSAGRVPLILFLCQMISALEVPLDLVQPPTITQQSPKDYIIDPRENIVIQCEAKGKPPP
 SFSWTRNGTHFDIDKDLVMTKPGTGTLIINIMSEGKAETYEYVYQCTARNERGAAVSNNIVVRRSPRL
 WTKEKLEPITLQSGQSLVPCRPPIGLPPPIIFWMDNSFQRLPQSERSVQGLNGDLYFSNVLPEdTREDY
 ICYARFNHTQTIQQKQPI SVKVISVDELNDTIAANLSDTEFYGAKSSRERPPFTLTPEGNASNKEELRGN
 VLSLECIAEGLPTPIIYWAKEDGMLPKNRTVYKNFEKTLQIIHVSEADSGNYQCI AKNALGAIHHTISVR
 YKAAAPYWIITAPQNLVLSPEGDGLICRANGNPKPRISWL TNGVPIEIA PDDPSRKIDGDTIIFSNVQERS
 SAVYQCNASNEYGYLLANAFVNVLAEPPIILTPANTLYQVIANRPAALLDCAFFGSPPLTIEWFKGAKGSA
 LHEDIYVHLHENGTLIPVAQKDGSTGYTVCARNKLGMAKNEVHLEIKDPTWIVKQPEYAVVQRGSMVSFE
 CKVKHDHTLSLTVLWLDNRELPSDERFTVDKDLVADVSDDDSGTYTCVANTTLDVSVASAVLSVVDV
 PNPPFDLELTDQLDKSVQLSWTPGDDNNSPITKFIIEYEDAMHKPGLWHHQTEVSGTQTTAQLKLSYVYN
 YSFRVMVAVNSIGKSLPSEASEQYLTKASEPDKNPTAVEGLGSEPDNLVITWKPLNGFESNGPGLQYKVS
 RQKDGDEWTSVVVANVSKYIVSGTPTFPYLIKVQALNDMGFAPEPAVVMGHSGEDLPMVAPGNVNVN
 VNSTLAEVHWDVPVPLKSI RGHLLQYRIYYWKTQSSSKRNRRIEKKILTFQGSKTHGMLPGLPEFSHYTL
 NVRVVNGKGEPA SPDRVFNTP EGVPSAPSSKIVNPTLDSL TLEWDPSPHPNGILTEYTLKYQPINSTH
 ELGPLVDLKIIPANKTRWTLKNLNFSTRYKFFYQAQTSAGSGSQITEEAVTTVDEAMASRQVDIATQGWFI
 GLMCAVALLILILLVCFIRRNKGGKYPVKEKEDAHADPEIQPMKEDDGTGGEYSDAEDHKPLKKGSRTP
 SDRTVKKEDSDDSLVDYGEVNGQFNEDGSFIGQYSGKKEKEPAEGNESSEAPSPVAMNSFV

TRTRPLE – GFP Tag – V

Restriction Sites: SgfI-MluI
 Cloning Scheme:

Cloning sites used for ORF Shutting:



Plasmid Map:


ACCN: NM_005010

ORF Size: 3549 bp

OTI Disclaimer: The molecular sequence of this clone aligns with the gene accession number as a point of reference only. However, individual transcript sequences of the same gene can differ through naturally occurring variations (e.g. polymorphisms), each with its own valid existence. This clone is substantially in agreement with the reference, but a complete review of all prevailing variants is recommended prior to use. [More info](#)

OTI Annotation: This clone was engineered to express the complete ORF with an expression tag. Expression varies depending on the nature of the gene.

Components: The ORF clone is ion-exchange column purified and shipped in a 2D barcoded Matrix tube containing 10ug of transfection-ready, dried plasmid DNA (reconstitute with 100 ul of water).

Reconstitution Method:

1. Centrifuge at 5,000xg for 5min.
2. Carefully open the tube and add 100ul of sterile water to dissolve the DNA.
3. Close the tube and incubate for 10 minutes at room temperature.
4. Briefly vortex the tube and then do a quick spin (less than 5000xg) to concentrate the liquid at the bottom.
5. Store the suspended plasmid at -20°C. The DNA is stable for at least one year from date of shipping when stored at -20°C.

RefSeq: [NM_005010.4](#), [NP_005001.3](#)

RefSeq Size: 6322 bp

RefSeq ORF: 3552 bp

Locus ID: 4897

UniProt ID: [Q92823](#)

Cytogenetics:	7q31.1
Domains:	ig, IGc2, IG, FN3
Protein Families:	Druggable Genome, Transmembrane
Protein Pathways:	Cell adhesion molecules (CAMs)
Gene Summary:	<p>Cell adhesion molecules (CAMs) are members of the immunoglobulin superfamily. This gene encodes a neuronal cell adhesion molecule with multiple immunoglobulin-like C2-type domains and fibronectin type-III domains. This ankyrin-binding protein is involved in neuron-neuron adhesion and promotes directional signaling during axonal cone growth. This gene is also expressed in non-neural tissues and may play a general role in cell-cell communication via signaling from its intracellular domain to the actin cytoskeleton during directional cell migration. Allelic variants of this gene have been associated with autism and addiction vulnerability. Alternative splicing results in multiple transcript variants encoding different isoforms. [provided by RefSeq, Jul 2008]</p>