

Product datasheet for **RG214873**

CMA1 (NM_001836) Human Tagged ORF Clone

Product data:

Product Type: Expression Plasmids
Product Name: CMA1 (NM_001836) Human Tagged ORF Clone
Tag: TurboGFP
Symbol: CMA1
Synonyms: chymase; CYH; MCT1
Mammalian Cell Selection: Neomycin
Vector: pCMV6-AC-GFP (PS100010)
E. coli Selection: Ampicillin (100 ug/mL)
ORF Nucleotide Sequence: >RG214873 representing NM_001836
Red=Cloning site Blue=ORF Green=Tags(s)

TTTTGTAATACGACTCACTATAGGGCGCCGGGAATTCGTCGACTGGATCCGGTACCGAGGAGATCTGCC
GCC**CGATCGCC**

ATGCTGCTTCTTCTCTCCCCCTGCTGCTCTTTCTTTGTGCTCCAGAGCTGAAGCTGGGGAGATCATCG
GGGGCACAGAATGCAAGCCACATTCCC GCCCTACATGGCCTACCTGGAAATTGAACTTCCAACGGTCC
CTCAAAATTTTGTGGTGGTTTCTTATAAGACGGAACCTTGTGCTGACGGCTGCTCATTGTGCAGGAAGG
TCTATAACAGTCACCCTTGGAGCCATAACATAACAGAGGAAGAAGACACATGGCAGAAGCTTGAGGTTA
TAAAGCAATTCGTCATCAAAAATAACACTTCTACTCTTACCACGATATCATGTTACTAAAGTTGAA
GGAGAAAGCCAGCCTGACCCTGGCTGTGGGACTCCCTTCCCATCACAATCAACTTTGTCACCT
GGGAGAATGTGCCGGTGGCTGGCTGGGGAAGAACAGGTGTGTTGAAGCCGGGCTCAGACTCTGCAAG
AGGTGAAGCTGAGACTCATGGATCCCCAGGCCTGCAGCCACTTACAGACTTTGACCACAATCTTCAGCT
GTGTGTGGGCAATCCCAGGAAGACAAAATCTGCATTTAAGGGAGACTCTGGGGGCCCTCTTCTGTGTGCT
GGGGTGGCCAGGGCATCGATCCTATGGACGGTCGGATGCAAAGCCCCCTGCTGTCTTACCCGAATCT
CCATTACCGCCCTGGATCAACCAGATCTGCAGGCAAT

ACGCGTACGCGGCCGCTCGAG - GFP Tag - GTTTAA



[View online »](#)

Protein Sequence: >RG214873 representing NM_001836
 Red=Cloning site Green=Tags(s)

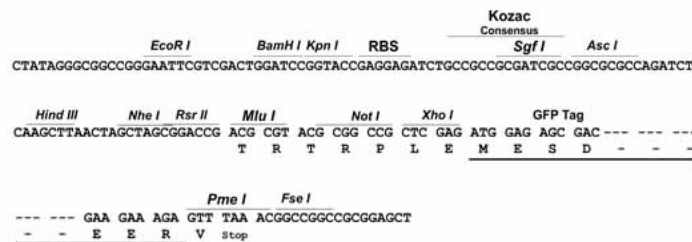
MLLLPLPLLLFLLCSRAEAGEIIGGTECKPHSRPYMAYLEIVTSNGPSKFCGGFLIRRNFVLTAAHCAGR
 SITVTLGAHNITEEDTWQKLEVIKQFRHPKYNTSTLHHDIMLLKLEKASLTLAVGTLPPFSQFNFP
 GRMCRVAGWGRGVLPKPGSDTLQEVKLRMLDPQACSHFRDFDHNLQLCVGNPRKTKSAFKGDSGGPLCA
 GVAQGIYSYGRSDAKPPAVFTRISHYRPWINQILQAN

TRTRPLE - GFP Tag - V

Restriction Sites: SgfI-MluI

Cloning Scheme:

Cloning sites used for ORF Shutting:



ACCN: NM_001836

ORF Size: 741 bp

OTI Disclaimer: The molecular sequence of this clone aligns with the gene accession number as a point of reference only. However, individual transcript sequences of the same gene can differ through naturally occurring variations (e.g. polymorphisms), each with its own valid existence. This clone is substantially in agreement with the reference, but a complete review of all prevailing variants is recommended prior to use. [More info](#)

OTI Annotation: This clone was engineered to express the complete ORF with an expression tag. Expression varies depending on the nature of the gene.

Components: The ORF clone is ion-exchange column purified and shipped in a 2D barcoded Matrix tube containing 10ug of transfection-ready, dried plasmid DNA (reconstitute with 100 ul of water).

Reconstitution Method:

1. Centrifuge at 5,000xg for 5min.
2. Carefully open the tube and add 100ul of sterile water to dissolve the DNA.
3. Close the tube and incubate for 10 minutes at room temperature.
4. Briefly vortex the tube and then do a quick spin (less than 5000xg) to concentrate the liquid at the bottom.
5. Store the suspended plasmid at -20°C. The DNA is stable for at least one year from date of shipping when stored at -20°C.

RefSeq: [NM_001836.2](#)

RefSeq Size: 744 bp

RefSeq ORF: 744 bp

Locus ID: 1215

UniProt ID: [P23946](#)

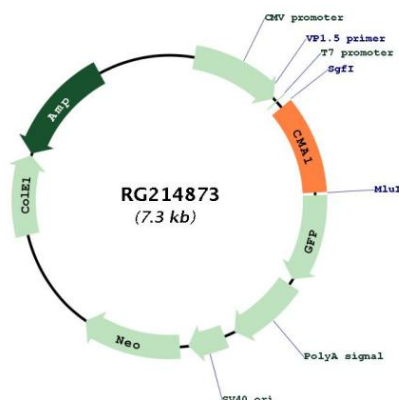
Cytogenetics: 14q12

Protein Families: Druggable Genome, Protease, Secreted Protein

Protein Pathways: Renin-angiotensin system

Gene Summary: This gene encodes a chymotryptic serine proteinase that belongs to the peptidase family S1. It is expressed in mast cells and is thought to function in the degradation of the extracellular matrix, the regulation of submucosal gland secretion, and the generation of vasoactive peptides. In the heart and blood vessels, this protein, rather than angiotensin converting enzyme, is largely responsible for converting angiotensin I to the vasoactive peptide angiotensin II. Alternative splicing results in multiple variants. [provided by RefSeq, Apr 2015]

Product images:



Circular map for RG214873