

Product datasheet for **RG214854**

PCDHA4 (NM_018907) Human Tagged ORF Clone

Product data:

Product Type:	Expression Plasmids
Product Name:	PCDHA4 (NM_018907) Human Tagged ORF Clone
Tag:	TurboGFP
Symbol:	PCDHA4
Synonyms:	CNR1; CNRN1; CRNR1; PCDH-ALPHA4
Mammalian Cell Selection:	Neomycin
Vector:	pCMV6-AC-GFP (PS100010)
E. coli Selection:	Ampicillin (100 ug/mL)



[View online »](#)

ORF Nucleotide
Sequence:

>RG214854 representing NM_018907
 Red=Cloning site Blue=ORF Green=Tags(s)

TTTTGTAATACGACTCACTATAGGGCGGCCGGAATTCGTCGACTGGATCCGGTACCGAGGAGATCTGCC
 GCC**CGGATCGCC**

ATGGAGTTTTCTGGGAAGCGGCCAGGAATCCGGCGTCTGCTGCTTACTTCTCTCCTCGCAGCCT
 GGGAGGCAGGGAACGGTCACTCACTACTCGGTCTCCGAGGAGGCCAAACACGGCACCTTCGTGGGCCG
 CATCGCGCAGGACCTGGGACTGGAGCTGGCGGAGCTGGTCCCGCCCTGTTCCGGGTGGCGTCCAAGGGC
 CGCGGAGGCCCTTCTGGAGGTAATCTGCAGAATGGCATTGTTGTGAATTCTCGGATCGACGGGAGG
 AGCTGTGCCGGCGGAGCGGAGTGCAGCATCCACCTGGAGGTGATCGTAGACAGGCCGCTGCAGGTTTT
 CCATGTGGACGTGGAGGTGAGGGACATTAACGATAACCCGCCGTGTTCCAGCAACACAAAAGAACCTG
 TCCATCGCGGAATCCAGGCCGCTGACTCTCGGTTTCCACTAGAGGGCGCCTCGGATGCAGATATCGGGG
 AGAACGCCCTGCTCACTACAGACTGAGCCAAATGAATACTTTCTCTGGAAAAACACCTGATGACGA
 GCTGGTAAAAGGTCTTGGGCTTATATTACGAAATCTTTAGACAGAGAAGAAGCTCCGGAGATTTTTTA
 GTGCTCACAGCCACTGATGGAGGCAAACCCGAGTTGACTGGCACCGTTACGTTACTCATCACAGTACTGG
 ATGCCAATGACAATGCCAGCTTTTGACAGAACCATTATAAGGTGAGATTACTAGAAAATGTTCTCAA
 TGGAACATTGGTAATTAACCTAACGCCTCAGATTTAGACGAAGGATTGAATGGGGACATTGTTTATTCA
 TTCTCAAATGATATTTCCGCAATGTGAAATCCAAGTTTACATAGATCCAATTACTGGACAAAATTATG
 TAAAGGGATATATTGACTTTGAAGAAAGCAAATCCTATGAAATATTGTAGAGGGCATTGATAAGGGACA
 GCTCCCACTTTCTGGCCATTGTAGAGTTATTGTGGAAGTAGAAGACAACAACGATAATGTCCAGATTTG
 GAATTCAGTCTTTATCACTTCCAATTAGAGAGGACGCTCCACTGGGTACAGTCAATCGCCCTGATCAGCG
 TGTCCGACAAAGACATGGGTGTCAATGGGCTGGTCACTGCTCCTTGACGTCCACGTCCCCTTCAAGT
 GGTGTCCACCTTCAAGAATTACTACTCGTTGGTGTGGACAGTGCCTGGACCGGAGAGCGTGTCAAGCC
 TATGAGCTGGTGGTGACCGCGGAGACGGGGCTCGCCTTCGCTGTGGGCCACGGCCAGTGTCTGTGG
 AGGTGGCTGATGTGAACGACAACGCTCCGGCGTTCGCGCAGCCGAGTACACAGTGTTCGTGAAGGAGAA
 CAACCCGCGGGCTGCCACATCTCACTGTGTCTGCGTGGGACGCGGACGCGCAGGAGAACGCGTGGT
 TCCTACTCGTGGTAGAGCGCGGGTAGGGGAGCGCGCTGTCGAGCTACGTTTCGGTGCATGCGGAGA
 GCGGCAAGGTGTACGCGTGCAGCCGCTGGACCAGGAGCTAGAGCTGCTGCAGTTTCAGGTGACCGC
 TCGCGATGCCGGCTGCCACCTCTGGGACGCAACGTGACGCTGCAGGTGTTCTGTGTTGACGAAAACGAC
 AACCGCCAGCACTGCTAGCGCCTCGGGCGGGTGGCACTGGTGGCGCAGTGCAGGAGCTGGTGCATGGT
 CGGTGGGTGTGGGCCACGTGGTGGCAAAGGTGCGCGCGGTGGATGCTGACTCGGGCTACAACGCGTGGCT
 TTCGTACGAGCTGCAGCCGGGGACTGGTGGCGCGCATCCCCTCCGCGTGGGGCTGTACTGCGGAG
 ATCAGCACAACGCGTGCCTGGACGAAACGGACGCTCCGCGCCACCGCCTACTGGTACTGGTGAAGGACC
 ACGGCGAGCCCGCTGACGGCCACGGCCACTGTGCTGGTGTCACTTGTGGAGAGTGGACAGGCGCCAAA
 GGCCTCCTCACGGGCGTGGTGGGCGTGTGGTCCCAGTGTGCGCTGGTGGATGTCAACGTATACCTG
 ATCATTGCCATCTGCGCGGTGTCCAGCCTTTGGTGTCCAGCTGCTGCTGTACACCGCGCTGCGGTGCT
 CTGCGCTGCCACCGAGGGCGCTGCGCTCCGGCAAGCCACGCTGGTGTGCTCCAGTGCAGTGGGGAG
 CTGGTCATACTCGCAGCAGAGGAGGCCGAGGGTGTGCTGTTGAGGGCCACCAAGACCGACCTCATG
 GCCTTACGCCCAAGTTTACCTGACTCTAGGGACAGAGAAGATCAGCTGCAGACAACCTGAGGAATCCTTTG
 CAAAGCCACGACAGCCAAACCTGACTGGCGTACTCTGCCTCCCTGAGAGCAGGCATGCACAGCTCTGT
 GCACCTAGAGGAGGCTGGCATTCTACGGGCTGGTCCAGGAGGGCCTGATCAGCAGTGGCCAACAGTATCC
 AGTGCAACACCAGAACCAGAGGCAGGAGAAGTGTCCCCTCAGTCCGTCGGGTGTCAACAGCAACAGCT
 GGACCTTTAAATACGGACCAGGCAACCCCAAACAATCCGGTCCCGGTGAGTTGCCCGACAAATTCATTAT
 CCCAGGATCTCCTGCAATCATCTCCATCCGGCAGGAGCCTACTAACAGCCAAATTGACAAAAGTACTTC
 ATAACCTTCGGCAAAAAGGAGGAGACCAAGAAAAAGAAGAAAAAGAAGGGTAACAAGACCCAGGAGA
 AAAAAGAGAAAGGGAACAGCAGCACTGACAACAGTGACCAG

AG**CGGACCG**ACGCGTACGCGGCCGCTCGAG - GFP Tag - GTTTAA

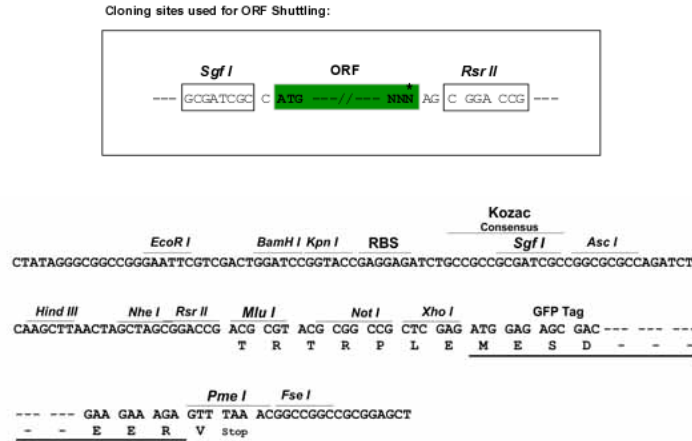
Protein Sequence: >RG214854 representing NM_018907
 Red=Cloning site Green=Tags(s)

```
MEFSWGSQGQESRRLLLLLLLLAWEAGNQLHYSVSEEAKHGTFVGRIAQDLGLELAELVPRLFRVASKG
RGGLLEVLNQLNGILFVNSRIDREELCRRSAECSIHLEVI VDRPLQVFHVDVEVRDINDNPPVFPATQKNL
SIAESRPLDSRFPLEGASDADIGENALLTYRLSPNEYFSLEKPPDELVKGLGLILRKSLDREEAPEIFL
VLTATDGGKPEL TGTVQLLITVLDANDNAPAFDRTIYKVRLLLENVPNGTLVIKLNASDLDEGLNGDIVYS
FSDISPVSKSFHIDPITGQIIIVKGYIDFEESKSYEIIIVEGIDKGQLPLSGHCRVIVEVEDNNDNVPDL
EFKSLSLPIREDAPLGTVIALISVSDKDMGVNGLVTCSTLTSHPVFKLVSTFKNYSYSLVLDALSALDRESVSA
YELVVTARDGGSPSLWATASVSVEVADVNDNAPAFAPQPEYTVFVKENPPGCHIFTVSAWDADAQENALV
SYSLVERRVGERALSSYVSVHAESGKVVYALQPLDHEELELLQFQVTARDAGVPLGSNVTLQVFLDEND
NAPALLAPRAGGTGGA VSELVPWSVGVGHVVAKVRAVDADSGYNALW SYELQPGTGGARIPFRVGLYTGE
ISTTRALDETAPRHLLVLVKDHGEPALTATATVLSLVESGQAPKASSRALVGAVGPDAAALVDVNVYL
IIAICAVSLLVLTLLLYTALRCSALPTEGACAPGKPTLVCSAVGSWSYSQQRPRVCSGEGPPKTDLM
AFSPSLPDSRDREDQLQTTEESFAKPRQPNPDWRYSASLRAGMHSSVHLEEAGILRAGPGGPDQQWPVTS
SATPEPEAGEVSPVGVAGVNSNSWTFKYGPNPKQSGPGLPDKFIIPGSPAIISIRQEPNTNSQIDKSDFI
ITFGKKEETKKKKKKKKGNKTQEKKEKGNSTTDNSDQ
```

SGPTRRRLE - GFP Tag - V

Restriction Sites: SgfI-RsrII

Cloning Scheme:

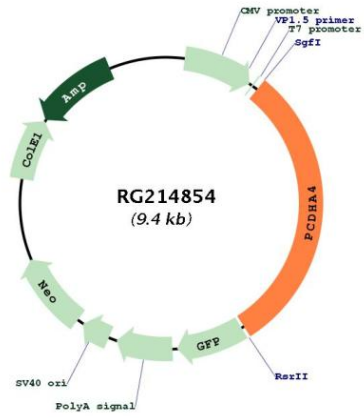


ACCN: NM_018907

ORF Size: 2841 bp

OTI Disclaimer:	The molecular sequence of this clone aligns with the gene accession number as a point of reference only. However, individual transcript sequences of the same gene can differ through naturally occurring variations (e.g. polymorphisms), each with its own valid existence. This clone is substantially in agreement with the reference, but a complete review of all prevailing variants is recommended prior to use. More info
OTI Annotation:	This clone was engineered to express the complete ORF with an expression tag. Expression varies depending on the nature of the gene.
Components:	The ORF clone is ion-exchange column purified and shipped in a 2D barcoded Matrix tube containing 10ug of transfection-ready, dried plasmid DNA (reconstitute with 100 ul of water).
Reconstitution Method:	<ol style="list-style-type: none"> 1. Centrifuge at 5,000xg for 5min. 2. Carefully open the tube and add 100ul of sterile water to dissolve the DNA. 3. Close the tube and incubate for 10 minutes at room temperature. 4. Briefly vortex the tube and then do a quick spin (less than 5000xg) to concentrate the liquid at the bottom. 5. Store the suspended plasmid at -20°C. The DNA is stable for at least one year from date of shipping when stored at -20°C.
RefSeq:	NM_018907.4
RefSeq Size:	5352 bp
RefSeq ORF:	2844 bp
Locus ID:	56144
UniProt ID:	Q9UN74
Cytogenetics:	5q31.3
Domains:	CA
Protein Families:	Transmembrane
Gene Summary:	This gene is a member of the protocadherin alpha gene cluster, one of three related gene clusters tandemly linked on chromosome five that demonstrate an unusual genomic organization similar to that of B-cell and T-cell receptor gene clusters. The alpha gene cluster is composed of 15 cadherin superfamily genes related to the mouse CNR genes and consists of 13 highly similar and 2 more distantly related coding sequences. The tandem array of 15 N-terminal exons, or variable exons, are followed by downstream C-terminal exons, or constant exons, which are shared by all genes in the cluster. The large, uninterrupted N-terminal exons each encode six cadherin ectodomains while the C-terminal exons encode the cytoplasmic domain. These neural cadherin-like cell adhesion proteins are integral plasma membrane proteins that most likely play a critical role in the establishment and function of specific cell-cell connections in the brain. Alternative splicing has been observed and additional variants have been suggested but their full-length nature has yet to be determined. [provided by RefSeq, Jul 2008]

Product images:



Circular map for RG214854