

## Product datasheet for **RG214834**

### ZNF675 (NM\_138330) Human Tagged ORF Clone

#### Product data:

Product Type:	Expression Plasmids
Product Name:	ZNF675 (NM_138330) Human Tagged ORF Clone
Tag:	TurboGFP
Symbol:	ZNF675
Synonyms:	TBZF; TIZ
Mammalian Cell Selection:	Neomycin
Vector:	pCMV6-AC-GFP (PS100010)
E. coli Selection:	Ampicillin (100 ug/mL)



[View online »](#)

**ORF Nucleotide Sequence:**

>RG214834 ORF sequence, **codon optimized**.  
**Due to the complexity of NM\_138330, the ORF clone is codon optimized for mammalian Expression.**  
**The nucleotide sequence differs from the reference sequence, yet the amino acid sequence remains identical.**

Red=Cloning site Blue=ORF Green=Tags(s)

TTTTGTAATACGACTCACTATAGGGCGGCCGGAATTCGTCGACTGGATCCGGTACCGAGGAGATCTGCC  
 GCC**GCGATCGCC**

ATGGGCCTGCTTACCTTTAGGGACGTGGCGATCGAGTTTAGCTTGGAGGAATGGCAGTGCTTGGATACAG  
 CCCAGCGAAACCTCTATAAGAACGTCATTCTCGAGAACTACAGAAATCTGGTTTTCTCGGGATTGCAGT  
 GAGTAAGCAGGACCTCATTACTTGTCTTGAACAGGAAAAAGAACCCCTGACCGTTAAGAGGCACGAGATG  
 GTGAATGAGCCGCCAGTGATGTGCTCACACTTTGCCAGGAGTTTGGCCGGAGCAGAATATTAAGACA  
 GCTTTGAAAAGGTGACATTGCGCGCATATGAGAAGTGCAGCAACGATAACTTTCAGCTCAAAGGATGCAA  
 GTCAGTCGACGAGTGAAGCTCCATAAAGGGGGCTATAACGGCCTCAATCAGTGCCTTCCCACCATGCGAG  
 AGCAAAATGTTCCAGTGCATAAGTATGTGAAAGTCTTCAATAAGTTTAGTCATTCTGACCGGCACAAAA  
 TTAAGCACATGGAAAAAAGCCTTTCAAGTGTAAAGAAATGCGGACGATCTTTTTGTATGTGCTCACCCT  
 GACACGGCAGGAAAGAACTATACAAAGGTCAATTTTTGCAAAATGCGAGGAGTGCAAAAAGCCGTAAC  
 CAGTCTCCAAGTTGACCAAACTATAAAGAATCTACACATGTGAGAAGCTCTATAAGTGTGAGGAATGCG  
 ATAGAAGTCAACAGTTTAGTAACCTTACAGAAATAAAGAAAGATTACGCCGAGAGAAACCGTATAA  
 ATGTGAGGAATGTGGGAAGGCTTTAATCAGAGCTCCACCTTACCACCTACAAGATCATCCATACGGGG  
 GAAAAGCCTTACAAGTGTGAGGAGTGCAGGAAAGCCTTCAACAGTTTAGTAATTTGACTACTCACAAAG  
 AGATCCATACTGGTGAGCAGCCGTATATCTGTGAGGAATGCGGTAAGGCATTTACACAGTCTTCTACCCT  
 TACCACCTACAAACGCATACACACCGGCGAAAAGCCGTACAAGTGCAGGAATGCGGCAAAGCGTTTAAAC  
 AGGTCTCTAAGCTTACAGAACACAAGAATTCATACCGGCGAGCAGCCATATAAATGCGAAGAGTGTG  
 GGAAGGCGTTTAAACCGCAGCAGCAACCTGACCGAACATCGAAAAATCCACACTGAAGAGAAGCCATAAA  
 GTGTAAGAATGTGTAAGCATTCAAACACTCTTACAGCCCTCACAACCTATAAAGGATCCACACGGGA  
 GAAAAACCTTACAATGCGAGGAGTGCAGCAAGGCTTTCAACAGATCTTCAAAGCTGACCGAGCACAAGA  
 AGCTTCATACAGGAAGAAGCCCTACAAGTGTGAAGAATGTGAAAAGCTTTTATTCAAAGCTCTAAGCT  
 GACAGAACAAAAAGATTCACTCCGGAGAGATCCCTATAAATGCGAGGAATGTGGAAAAGCCTTCAAG  
 CACTCCAGCAGCCTTACAACCCATAAACGCATCCACACAGGCGAGAAACCATATAAGTGGGAAGAGTGGC  
 GCAAGGCATTTTCCAGGAGTAGCAAGCTGACCGAGCACAATAATCATACCGGGGAGAAACCTTACAA  
 ATGCGAGCGCTGCGACAAGGCCTTCAATCAATCCGCTAACCTGACCAAGCACAAGAAGATTACACGGGA  
 GAGAAATTGCAGAATTGGAATGTG

**ACGCGT**ACGCGGCCGCTCGAG - GFP Tag - GTTTAA

**Protein Sequence:** >RG214834 representing NM\_138330  
 Red=Cloning site Green=Tags(s)

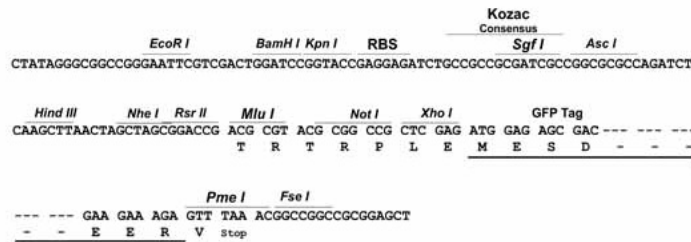
MGLLTFRDVAIEFSL EEWQCLDTAQRNL YKNVILENYRNLVFLGIAVSKQDLITCLEQEKEPLTVKRHEM  
 VNEPPVMCSHFAQEFWPEQNIKDSFEKVTLLRRYEKCGNDNFQLKGCKSVDECKLHKGGYNGLNQCLPTMQ  
 SKMFQCDKYVKVFNKFSHSDRHKIKHMENKPFKCKECSRFCMLSHLTRHERNYTKVNFCKCEECEKAVN  
 QSSKLTCHKRIYTCEKLYKQCQCDRTFNQFNLTEYKKDYAREKPYKCEECEGKAFNQSSHLTTHKIHTG  
 EKPYKCEECEGKAFNQFNL TTHKKIHTGEQPYICEECEGKAFTQSSTLTTHKRIHTGEKPYKCEECEGKAFN  
 RSKL TEHKNIHTGEQPYKCEECEGKAFNRSSNLTEHRKIHTEEKPYKCKEKGKAFKHSSALTTTHKRIHTG  
 EKPYKCEECEGKAFNRSSKLTEHKKLHTGKPKYKCEECEGKAFIQSSKLTEHKKIHSGEIPYKCEECEGKAFK  
 HSSSLTTHKRIHTGEKPYKCEECEGKAFSRSSKLTEHKIHTGEKPYKCERCDAFNQSANLTKHKKIHTG  
 EKLQNWNV

TRTRPLE - GFP Tag - V

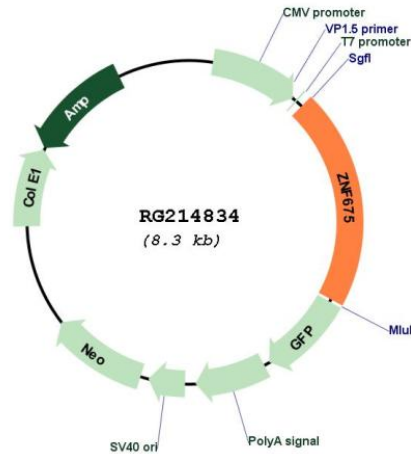
**Restriction Sites:** SgfI-MluI

**Cloning Scheme:**

Cloning sites used for ORF Shutting:



## Plasmid Map:



ACCN: NM\_138330

ORF Size: 1704 bp

**OTI Disclaimer:** The molecular sequence of this clone aligns with the gene accession number as a point of reference only. However, individual transcript sequences of the same gene can differ through naturally occurring variations (e.g. polymorphisms), each with its own valid existence. This clone is substantially in agreement with the reference, but a complete review of all prevailing variants is recommended prior to use. [More info](#)

**OTI Annotation:** This clone was engineered to express the complete ORF with an expression tag. Expression varies depending on the nature of the gene.

**Components:** The ORF clone is ion-exchange column purified and shipped in a 2D barcoded Matrix tube containing 10ug of transfection-ready, dried plasmid DNA (reconstitute with 100 ul of water).

**Reconstitution Method:**

1. Centrifuge at 5,000xg for 5min.
2. Carefully open the tube and add 100ul of sterile water to dissolve the DNA.
3. Close the tube and incubate for 10 minutes at room temperature.
4. Briefly vortex the tube and then do a quick spin (less than 5000xg) to concentrate the liquid at the bottom.
5. Store the suspended plasmid at -20°C. The DNA is stable for at least one year from date of shipping when stored at -20°C.

**RefSeq:** [NM\\_138330.2](#), [NP\\_612203.2](#)

RefSeq Size:	2209 bp
RefSeq ORF:	1707 bp
Locus ID:	171392
UniProt ID:	<a href="#">Q8TD23</a>
Cytogenetics:	19p12
Domains:	KRAB, zf-C2H2
Protein Families:	Transcription Factors
Gene Summary:	May be involved in transcriptional regulation. May play a role during osteoclast differentiation by modulating TRAF6 signaling activity.[UniProtKB/Swiss-Prot Function]