

## Product datasheet for **RG214823**

### **CPT1B (NM\_152245) Human Tagged ORF Clone**

#### **Product data:**

Product Type:	Expression Plasmids
Product Name:	CPT1B (NM_152245) Human Tagged ORF Clone
Tag:	TurboGFP
Symbol:	CPT1B
Synonyms:	CPT1-M; CPT1M; CPTI; CPTI-M; M-CPT1; MCCPT1; MCPT1
Mammalian Cell Selection:	Neomycin
Vector:	pCMV6-AC-GFP (PS100010)
E. coli Selection:	Ampicillin (100 ug/mL)



[View online »](#)

**ORF Nucleotide Sequence:**

>RG214823 representing NM\_152245  
 Red=Cloning site Blue=ORF Green=Tags(s)

TTTTGTAATACGACTCACTATAGGGCGGCCGGGAATTCGTCGACTGGATCCGGTACCGAGGAGATCTGCC  
 GCC**CGGATCGCC**

ATGGCGGAAGCTCACCAGGCCGTGGCCTTCCAGTTACCGGTGACCCAGACGGGGTTCGACTTCCGGCTCA  
 GTCGGGAGGCCCTGAAACACGTCTACCTGTCTGGGATCAACTCCTGGAAGAAACGCCTGATCCGCATCAA  
 GAATGGCATCCTCAGGGCGTGTACCCTGGCAGCCCCACCAGCTGGCTGGTCGTCATCATGGCAACAGTG  
 GGTTCCTCCTTCTGCAACGTGGACATCTCCTTGGGGCTGGTCAGTTGCATCCAGAGATGCCTCCCTCAGG  
 GGTGTGGCCCTACCAGACCCCGCAGACCCGGGCACTTCTCAGCATGGCCATCTTCTCCACGGGCGTCTG  
 GGTGACGGGCATCTTCTTCCGCCAAACCTGAAGCTGCTTCTGCTACCATGGGTGGATGTTTGAG  
 ATGCATGGCAAGACCAGCAACTGACCAGGATCTGGGCTATGTGTATCCGCCTTCTATCCAGCCGGCACC  
 CTATGCTCTACAGCTTCCAGACATCTCTGCCAAGCTTCTGTGCCAGGGTGTGAGCCACAATTCAGCG  
 GTACCTAGAGTCTGTGCGCCCTTGTGGATGATGAGGAATATTACCGCATGGAGTTGCTGGCCAAAGAA  
 TTCCAGGACAAGACTGCCCCAGGCTGCAGAAATACCTGGTGCTCAAGTCATGGTGGGCAAGTAACATATG  
 TGAGTGACTGGTGGGAAGAGTACATCTACCTTCGAGGCAGGAGCCCTCTCATGGTGAACAGCAACTATTA  
 TGTGATGGACCTTGTGCTCATCAAGAATACAGACGTGCAGGCAGCCCGCCTGGGAAAACATCATCCAGCC  
 ATGATCATGTATCGCCGTAACCTGGACCGTGAAGAAATCAAGCCTGTGATGGCACTGGGCATAGTGCCTA  
 TGTGCTCTACCAGATGGAGAGGATGTTCAACACCACTCGGATCCCGGGCAAGGACACAGATGTGCTACA  
 GCACCTCTCAGACAGCCGGCAGTGGCTGTCTACCACAAGGGACGCTTCTCAAGCTGTGGCTCTATGAG  
 GGCGCCCGTCTGCTCAAGCCTCAGGATCTGGAGATGCAGTTCCAGAGGATCCTGGACGACCCCTCCCCAC  
 CTCAGCCTGGGGAGGAGAAGCTGGCAGCCCTCACTGCAGGAGGAAGGGTGGAGTGGGCGCAGGCACGCCA  
 GGCCCTTTTAGCTCTGGAAGAATAAGGCTGCCTTGGAGGCCATCGAGCGTGCCGCTTTCTTCGTGGCC  
 CTGGATGAGGAATCCTACTCTATGACCCGAAGATGAGGCCAGCCTCAGCCTCTATGGCAAGGCCCTGC  
 TACATGGCAACTGCTACAACAGGTGTTTGACAAATCCTTCACTCTCATTTCTTCAAGAATGGCCAGTT  
 GGGTCTCAATGCAGAGCATGCGTGGGCAGATGCTCCCATATTGGGCACCTCTGGGAGTTTGTCTGGGC  
 ACAGACAGCTTCCACCTGGGCTACACGGAGACCCGGCACTGCCTGGGCAAACCGAACCTGCGCTCGCAC  
 CTCCTACACGGCTGCAGTGGGACATTCAAAACAGTGCCAGGCGGTATCGAGAGTTCTACCAGGTGGC  
 CAAGGCGTTGGCAGACGACGTGGAGTTGTACTGCTTCCAGTTCTGCCCTTTGGCAAAGGCCCTCATCAAG  
 AAGTGGCGGACCAGCCCTGATGCCTTTGTGAGATCGCGCTGCAGCTGGCTCACTCCGGGACAGGGGTA  
 AGTTCTGCCTGACCTATGAGGCCTCAATGACCAGAATGTTCCGGGAGGGACGGACTGAGACTGTGCGTTC  
 CTGTACCAGCGAGTCCACAGCCTTTGTGAGGCCATGATGGAGGGGTCCACACAAAAGCAGACCTGCGA  
 GATCTCTTCCAGAAGGCTGCTAAGAAGCACCAGAATATGTACCGCCTGGCCATGACCGGGGACGGGATCG  
 ACAGGCACCTCTTCTGCCTTTACTTGGTCTCCAAGTACCTAGGAGTCACTCTCCTTTCTTGTGAGGT  
 GCTCTCGGAACCTGGCGTCTCTCCACCAGCCAGATCCCCAATCCCAGATCCGCATGTTCCGACCCAGAG  
 CAGCACCCCAATCACCTGGGCGCTGGAGGTGGCTTTGGCCCTGTAGCAGATGATGGCTATGGAGTTTCT  
 ACATGATTGCAGGCGAGAACACGATCTTCTTCCACATCTCCAGCAAGTTCTCAAGCTCAGAGACGAAACGC  
 CCAGCGCTTTGGAACCACATCCGCAAAGCCCTGCTGGACATTGCTGATCTTTTCAAGTTCCCAAGGCC  
 TACAGC

**ACGCGT**ACGCGGCCGCTCGAG - GFP Tag - GTTTAA

**Protein Sequence:** >RG214823 representing NM\_152245  
 Red=Cloning site Green=Tags(s)

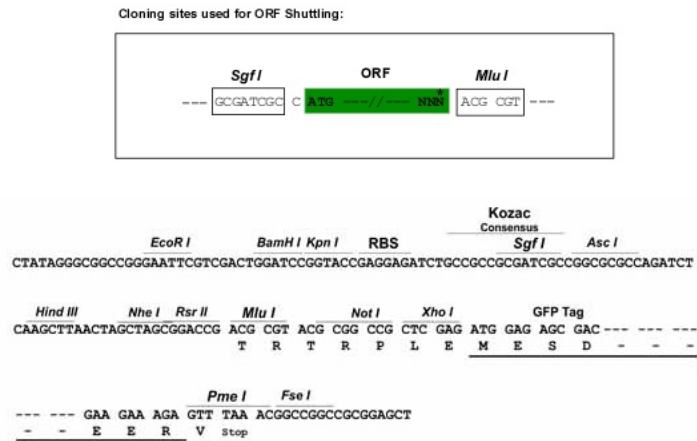
```

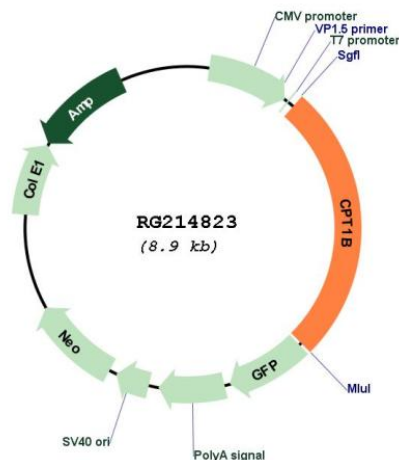
MAEAHQAVAFQFTVTPDGVDFRLSREALKHVYLSGINSWKKRLIRIKNGILRGVYPGSPTSWLVMIMATV
GSSFVNDISLGLVSCIQRCLPQCGPYQTPQTRALLSMAIFSTGVWVTGIFFFRQTLKLLCYHGWMFE
MHGKTSNLTRIWAMCIRLLSSRHPMLYSFQTSPLPKLPVPRVSATIQRYLESVRPLLDDEEYRMELLAKE
FQDKTAPRLQKYLVLKSWWASNYVSDWWEYIYLRGRSPLMVNSNYVMDLVLIKNTDVQAARLGNIIHA
MIMYRRKLDREEIKPVMALGIVPMCSYQMERMFNTTRIPGKDTDVLQHLSDSRHVAVYHKGRFFKLWLYE
GARLLKPQDLEMQFQRILDDPSPQPGEKLAALTAGGRVEWAQARQAFFSSGKNKAALAIERAAFFVA
LDEESYSYDPEDEASLSLYGKALLHGNCYNRWFDKSFTLISFKNGQLGLNAEHAWADAPIIGHLWEFVLG
TDSFHLGYTETGHCLGKPNPALAPPTRLQWDIPKQCQAVIESSYQVAKALADDVELYCFQFLPFQGLIK
KCRTSPDAFVQIALQLAHRDRGKFCLEYEASMRMFREGRTETVRSCTSESTAFVQAMMEGSHTKADLR
DLFQKAAKKHQNMRYLAMTGAGIDRHLFCLYLVSXYLVGSSPFLAEVLSEPWRLSTSQIPQSQIRMFDP
QHPNHLGAGGGFVADDGYGVSYMIAGENTIFFHISSESSSENAQRFGNHIRKALLDIADLFQVPKA
YS
  
```

TRTRPLE - GFP Tag - V

**Restriction Sites:** SgfI-MluI

**Cloning Scheme:**



**Plasmid Map:**


**ACCN:** NM\_152245

**ORF Size:** 2316 bp

**OTI Disclaimer:** The molecular sequence of this clone aligns with the gene accession number as a point of reference only. However, individual transcript sequences of the same gene can differ through naturally occurring variations (e.g. polymorphisms), each with its own valid existence. This clone is substantially in agreement with the reference, but a complete review of all prevailing variants is recommended prior to use. [More info](#)

**OTI Annotation:** This clone was engineered to express the complete ORF with an expression tag. Expression varies depending on the nature of the gene.

**Components:** The ORF clone is ion-exchange column purified and shipped in a 2D barcoded Matrix tube containing 10ug of transfection-ready, dried plasmid DNA (reconstitute with 100 ul of water).

**Reconstitution Method:**

1. Centrifuge at 5,000xg for 5min.
2. Carefully open the tube and add 100ul of sterile water to dissolve the DNA.
3. Close the tube and incubate for 10 minutes at room temperature.
4. Briefly vortex the tube and then do a quick spin (less than 5000xg) to concentrate the liquid at the bottom.
5. Store the suspended plasmid at -20°C. The DNA is stable for at least one year from date of shipping when stored at -20°C.

**RefSeq:** [NM\\_152245.3](#)

**RefSeq Size:** 2834 bp

**RefSeq ORF:** 2319 bp

**Locus ID:** 1375

**UniProt ID:** [Q92523](#)

**Cytogenetics:** 22q13.33

<b>Domains:</b>	Carn_acyltransf
<b>Protein Families:</b>	Druggable Genome, Transmembrane
<b>Protein Pathways:</b>	Adipocytokine signaling pathway, Fatty acid metabolism, PPAR signaling pathway
<b>Gene Summary:</b>	The protein encoded by this gene, a member of the carnitine/choline acetyltransferase family, is the rate-controlling enzyme of the long-chain fatty acid beta-oxidation pathway in muscle mitochondria. This enzyme is required for the net transport of long-chain fatty acyl-CoAs from the cytoplasm into the mitochondria. Multiple transcript variants encoding different isoforms have been found for this gene, and read-through transcripts are expressed from the upstream locus that include exons from this gene. [provided by RefSeq, Jun 2009]