

Product datasheet for **RG214821**

CRMP3 (DPYSL4) (NM_006426) Human Tagged ORF Clone

Product data:

Product Type:	Expression Plasmids
Product Name:	CRMP3 (DPYSL4) (NM_006426) Human Tagged ORF Clone
Tag:	TurboGFP
Symbol:	CRMP3
Synonyms:	CRMP3; DRP-4; ULIP4
Mammalian Cell Selection:	Neomycin
Vector:	pCMV6-AC-GFP (PS100010)
E. coli Selection:	Ampicillin (100 ug/mL)



[View online »](#)

ORF Nucleotide Sequence:

>RG214821 representing NM_006426
 Red=Cloning site Blue=ORF Green=Tags(s)

TTTTGTAATACGACTCACTATAGGGCGGCCGGAATTCGTCGACTGGATCCGGTACCGAGGAGATCTGCC
 GCC**CGGATCGCC**

ATGTCCTTCCAGGGCAAGAAAAGCATCCCCGGATCACGAGTGACCGCCTTCTGATCAGAGGTGGGAGGA
 TCGTGAATGACGACCAAGTCCCTTTACGCTGATGTGCACGTGGAAGATGGCTTGATAAAACAAATCGGAGA
 AAACCTCATCGTCCCTGGGGCATCAAGACCATTGACGCCACCGCCTGATGGTCCCTCCTGGTGGCGTT
 GACGTCCACACAAGGCTGCAGATGCCTGTCTGGGCATGACACCGGCTGACGACTTCTGTGAGGGCACCA
 AGGCAGCGCTAGCAGGAGGAACCACCATGATCTTGGACCAGTCTTCCCGACACGGGTGTGAGCCTGCT
 GGCGGCCACGAGCGGTGGCGGGAGCGGGCGACAGCGCGCCTGCTGCGACTACTCCCTGCACGTGGAC
 ATCACCCGATGGCATGAGAGCATCAAGGAGGAGCTGGAGGCCCTGGTCAAGGAGAAGGGTGTGAACCTCT
 TCCTGGTCTTTCATGGCATACAAGGACCGGTGCCAGTGCAGCGACAGCCAGATGTACGAGATCTTCAGCAT
 CATCCGGACCTGGGGCCTTGGCCAGGTGCACGCTGAGAACGGGGACATCGTGGAGGAGGAGCAGAAG
 CGTTTGTGGAGCTCGGCATCACTGGCCCCGAGGGCCACGTGCTCAGCCACCCCGAGGAGGTGGAGGCTG
 AGGCGGTGTACCGAGCTGTACCATCGCCAAGCAGGCAAACCTGCCCGCTGTACGTACCAAGGTGATGAG
 CAAGGGGGCGGCCGACGCCATCGCTCAGGCCAAGCGCAGAGGGGTGGTCTGTTTGGGGAGCCCATCACC
 GCCAGCCTGGGCACCGACGGTTCACACTACTGGAGCAAGAACTGGGCCAAGGCCGACGCTTCGTACAT
 CACCCCTGTCAACCCAGACCCACCACGGCAGACCACCTCACCTGCTTGTCTCCAGCGGGGACCTCCA
 GGTGACAGGCAGCGCCACTGCACCTTACCAGTGCAGGAGGCTGTGGGCAAGGACAACCTTCGCGCTG
 ATCCCCGAGGGCACCAACGGCATTGAGGAGCGCATGTCGATGGTCTGGGAGAAATGTGTGGCCTCTGGGA
 AGATGGACGAGAATGAGTTCGTCGCGGTGACCAAGTACAAATGCTGCCAAAATCTCAATTTTACCAAG
 GAAGGGCGGAGTGGCTGTGGGCTCTGACGCTGACCTGGTCAATATGGAACCCCAAGGCCACCAAGATCATC
 TCTGCCAAGACCCACAATCTGAACGTGGAGTACAACATCTTCGAGGGAGTGGAGTGCCGGGGAGCGCCTG
 CCGTGGTCATAAGTCAGGGCCGAGTGGCGCTGGAGGACGGGAAGATGTTTGTACCCCGGGGGCGGGCCG
 CTTCTGTCCTCGGAAAACATTCCCGACTTTGTCTACAAGAGGATCAAAGCTCGAACAGGCTGGCGGAG
 ATCCACGGTGTGCCCCGTGGGCTGTATGACGGGCCGTCACGAGGTGATGGTGCCTGCCAAGCCAGGGA
 GTGGCGCTCCGGCCCGCGCTCCTGCCAGGCAAGATCTCCGTGCCTCCTGTGCGCAACCTACATCAGTC
 GGGTTACGCCTATCTGGTCTCAGGCTGATGACCACATCGCCCGACGCACAGCACAGAAGATCATGGCA
 CCACCTGGCGGCCGCTCCAACATCACCTCTCTCTCC

AG**CGGACCG**ACGCGTACGCGGCCGCTCGAG - GFP Tag - GTTTAA

Protein Sequence:

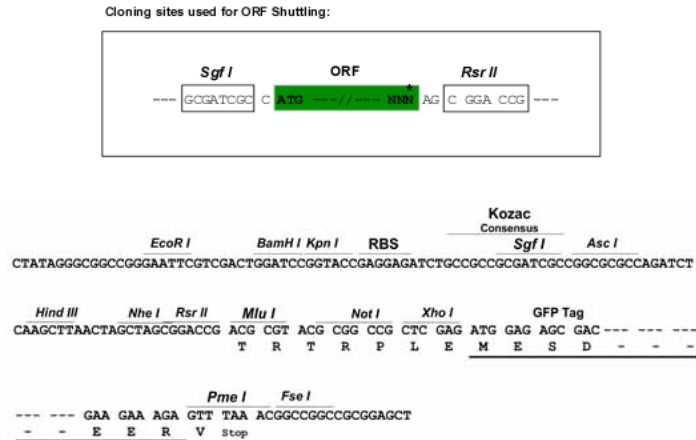
>RG214821 representing NM_006426
 Red=Cloning site Green=Tags(s)

MSFQGKKSIPRITSDRLLIRGGRIVNDQSFYADVHVEDGLIKQIGENLIVPGGIKTIDAHGLMVLPGGV
 DVHTRLQMPVLGMPADDFCQGTKAALAGGTTMILDHVPDGTGVSLLAAYERWRERADSAACCDYSLHVD
 ITRWHESIKEELEALVKEKGVNSFLVFMAYKDRQCSDSQMYEIFSIIIRDLGALAQVHAENGDIVVEEQK
 RLLELGITGPEGHVLSHPVEEVEAEVYRAVTIAKQANCLYVTKVMSKGAADAIQAQRKRGVVVFGEPIIT
 ASLGTGSHYWSKNWAKAAAFVTSPPVNPDPPTADHLTCLLSSGDLQVTGSAHCTFTTAQKAVGKDNFAL
 IPEGTNGIEERMSMVWEKCVASGKMDENEFVAVTSTNAAKIFNFYPRKGRVAVGSDADLVIWNPKATKII
 SAKTHNLNVEYNI FEGVECRGAPAVVISQGRVALEDGKMFVTPGAGRFPVPRKTFPDFVYKRIKARNRLAE
 IHGVPRLYDGPVHEVMVPAKPGSGAPARASCPGKISVPPVVRNLHQSGFSLSGSQADDHIARRTAQKIMA
 PPGGRSNITSLS

SGP**TRTRRLE** - GFP Tag - V

Restriction Sites:

Sgfl-RsrII

Cloning Scheme:


ACCN: NM_006426

ORF Size: 1716 bp

OTI Disclaimer: The molecular sequence of this clone aligns with the gene accession number as a point of reference only. However, individual transcript sequences of the same gene can differ through naturally occurring variations (e.g. polymorphisms), each with its own valid existence. This clone is substantially in agreement with the reference, but a complete review of all prevailing variants is recommended prior to use. [More info](#)

OTI Annotation: This clone was engineered to express the complete ORF with an expression tag. Expression varies depending on the nature of the gene.

Components: The ORF clone is ion-exchange column purified and shipped in a 2D barcoded Matrix tube containing 10ug of transfection-ready, dried plasmid DNA (reconstitute with 100 ul of water).

Reconstitution Method:

1. Centrifuge at 5,000xg for 5min.
2. Carefully open the tube and add 100ul of sterile water to dissolve the DNA.
3. Close the tube and incubate for 10 minutes at room temperature.
4. Briefly vortex the tube and then do a quick spin (less than 5000xg) to concentrate the liquid at the bottom.
5. Store the suspended plasmid at -20°C. The DNA is stable for at least one year from date of shipping when stored at -20°C.

RefSeq: [NM_006426.1](#), [NP_006417.1](#)

RefSeq Size: 2699 bp

RefSeq ORF: 1719 bp

Locus ID: 10570

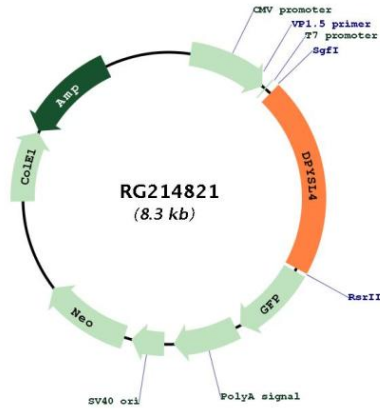
UniProt ID: [O14531](#)

Cytogenetics: 10q26.3

Domains: Amidohydro_1

Gene Summary: Necessary for signaling by class 3 semaphorins and subsequent remodeling of the cytoskeleton. Plays a role in axon guidance, neuronal growth cone collapse and cell migration (By similarity).[UniProtKB/Swiss-Prot Function]

Product images:



Circular map for RG214821