

Product datasheet for **RG214806**

FHDC1 (NM_033393) Human Tagged ORF Clone

Product data:

Product Type:	Expression Plasmids
Product Name:	FHDC1 (NM_033393) Human Tagged ORF Clone
Tag:	TurboGFP
Symbol:	FHDC1
Synonyms:	INF1
Mammalian Cell Selection:	Neomycin
Vector:	pCMV6-AC-GFP (PS100010)
E. coli Selection:	Ampicillin (100 ug/mL)
ORF Nucleotide Sequence:	>RG214806 representing NM_033393 Red=Cloning site Blue=ORF Green=Tags(s)

TTTTGTAATACGACTCACTATAGGGCGGCCGGAATTCGTCGACTGGATCCGGTACCGAGGAGATCTGCC
GCC**CGATCGCC**

ATGCATGTTATGAATTGTGTCTCCTTGGTCAGTGATAAAGAAAATGGGAATATTGCCACAGCACCTGGAT
TCATGATTGGGCAGACACCTCCTCCAGCACCTCCTCCACCTCCTCCTCCACCCCTCCATCTCCACCATG
TTCATGTTCAAGGAAGAGTGTCTTCTCCCTCCTCCACCCACCACCTCCACTTCTGGGGAGCCT
CCCATCCCACCTCCCCACCAGGCTACCCCACTACTCACATGAACGGCTACAGCCACCTTGGTAAGA
AAAAGCGGATGAGAAGCTTTTTTGGAAAATATTCCGGAGGAGCAAGTTCGAGGCAAACCAACATCTG
GACCTTGGCAGCCAGGCAGGAACATCACTACCAAATTGATACAAAGACCATTGAGGAGCTCTTGGGCGAG
CAGGAAGACACCACCAAGTCTTCCCTTCTAGGAGAGGAAGAAGTAAATTCATCCTTCAGAGAAGCTC
GAGAAGAGATTACTATTTTGGATGCAAAACGGAGCATGAACATTGGGATATTTCTTAAGCAATTTAAGAA
GTCTCCTCGGTCCATTGTAGAAGATTTTCATCAAGGAAAAGTGAGCATTATGGATCAGAGACCTTGCGA
GAATTTCTTAAGTTTTTGGCAGAGTCAGAAGAGGTAAGAAGTAAAAGCGTTTAGTGGCGACGTGTCGA
AGCTGTCTTGGCAGATTCTTTCTGTATGGCTAATTCAGGTGCCAACTATTCACCTTCGGATTGAAGC
CATGGTGCTAAAAGAAGGAATTTCTACCTTCTTGTCTTCTCTATATACAGATATAACAGTTTTAAGAAT
GCTATAAAGAAGTATGATCATGTGAAGAGCTACATTCAATATTACACTTGGTGCTCCAGGCTGGGAATA
TCATGAATGCAGGAGGTATGCCGGAATGCAGTAGGATTTAAACTGTCTTCTTTGCTCAAATTGGCAGA
CACAAAAGCAAACAACTGGGATGAATCTCCTGCACTTTGTTGCACAGGAAGCCAAAAGAAAGATACC
ATTCTTCTAACTTTTCAGAAAAATGTCATCATGTTTCAGAAAGCTGCTAGATTATCTCTGGAGAACCGG
AGGCAGAACTGCACTTGTGTTTGTGAGGACAAAATCACTAAAAGAAAACATCCAGCGGGATGGTGAAT
TTGTCAGCAGATGGAAGATTTTCTCAGTTTGGCATAGAAAAGCTGAGGGAAGTGGAAATGCTGGAACAA
GAGCTCCAGGATGAGGCCTACACCCTTATAGATTTTTTCTGTGAAGACAAAAAACCATGAACTGGATG
AATGCTTTCAGATATTTAGAGATTTCTGTACCAAATCAACAAAGCAGTTAAGGACAACCACGACGGGA
GGCGCAGGAGCTGAGGCAGCTGCAGAGGCTGAAGGAGCAGGAGCAGAAGCAGCGCTCCTGGCAACTGGG



[View online >](#)

GAGCTGGGGCATTGGCCGGAGCAGCAGTGAGAATGATGTGGAGCTGCTGACCAAGAAGGGTGCAGAGG
 GCCTGCTCCCTTCTGCACCCAGGCCATCAGCCCCTCCAGCCCCTCTACCGGCCCCCGAACCCCG
 CCGCTCCCGCCTCTCCCTGGGTCCCTCTGCTGACCGGGAGCTGCTGACCTTCTGGAGAGCTCCACCGGC
 AGCCCTGAGGAGCCAAATAAGTTCCACAGCCTGCCCGGAGCAGCCCCGGCAGGCCCGGCCACGATAG
 CCTGCCTGGAGCCTGCAGAAAGTGGGCACCAGGACTCCAGCTTTCACACAAACCTCAGGCCTCGGGGG
 CCAGGAGGAGGCCCAACCCACCCTCAGCACAGGCGCACCAGCTTGCAGCCGCCAGCCTGAGAACCAT
 GCCTTGCCTTCCCAAGAGCTCGTGCCAGGGCGTCAGTGTCTCCGAAAGAGGTACAGTAGGCCCGTGA
 GCCTGGGCTCAGCACAGTCCCCTCTCTCGCCATTGGCTCTGGGAATTAAGGAGCATGAGCTGGTGAC
 AGGGCTGGCCAGTTCAACCTCCAGGGTCCCAGGGCATGGAGGAGACCTCCAGCTGACTCTGAGTGAC
 TTCAGCCCGATGGAGCTAGAGTCTGTGGGGCATAGGGGCCCGCAGTCCCTCAGTGCCAGCAGCAGAGCC
 TGACACCCATGGGAGAGATGCCCTGGGGAGTCTCAGCCAGCGCTGGAGGATGGCAAGGCTGCCCCGA
 TGAGCCTGGAAGTGCAGCTTGGGATCTGTGGGTAGCAGCAGCCCTGAGAACAAAGATCTAGACCTCTG
 TTCTGCATCTCGACACCACCGACTGCTACTGACCTGGACTGCTCAGAGGGAACCGACTCCAGACCCA
 GAGGCGGGGACCCGGAGGAAGCGGGGAAGGGGATGGCTCCATGTCTCTGGGGTGGAGAAATGGGGGA
 CAGCCAAGTCTCTCAACCCCTACATCCAGCCCCCTGGGGAGGCTCCTGCCCCGTCTCTGTGGATAGT
 GAGCCCAGCTGCAAGGGCGGCCTGCCAGGGACAACCCACCAAAAGGAAAGATGTTGTAGCACAAAGA
 GAGGCTCCCTGAAAGAGGCGTCTCCCGGGGCTCCAAGCCGGGAGCGCCCGCGGAGCCAGGGGGCAGT
 GGCAAGTCTGTGCGGACCCTGACCGCCTCAGAGAACGAGAGCATGCGCAAGGTCATGCCATCACCAAG
 TCCAGCAGAGGCGCCGGCTGGAGGCGACCAGAGCTGTCATCCCGGGGGCCCTCCAGAAATCCCCCAGCA
 GCACAGATACTGTGTGGTACGCCAGAACTCCGTGCGGAGGGCCTCCACAGGCGCCGAGAGCAGAGGCT
 GCCCGGGGGAGCAGCGGCTCCAGCAGCACCCTCCGGGGAGGGACGTTCCCTGCAGCCAGGGGTTCT
 TTCAAGAAGCCAGTGCCAAACCACTCAGGAACCTCCCAGACAGAAGCCTGAGGAAAATAAGACCTGCC
 GCGCCACTCCGAGGGCCCTGAGAGTCCCAAGAAGAGCCCAAGACCCCGTCAGTGCCACGCTCCCCA
 CGAACTACCCCGTGTCCGAGCTTTCGCCGGAACACAGTGGCCTCCTCCTCGAAGCATGAGAACAGAT
 CTTCTCCCGTGGCCAAAGCCCCGGCATCACTCGGACAGTGTGCGAGCGCAGCTGAGGGTGAAGGGG
 ACCCCGAGGATGCCGCTCCCAAGGACAGCAGCACTTTGAGGCGAGCCAGCAGTGCCTGGGCCCCCAAGAA
 GCGCCAGAGTCTGCGGAGGGTCCAGTCCAACACGAGGCCCTCTGAAGGCCAGAGGGGCTGGGGAA
 AGGGCCTCCCTCCGTCCGAAGGACTCCAGTCCGACCACGCTGGGGAGAATCCTCAATCCCTTACGGAA

ACGCGTACGCGGCCGCTCGAG - GFP Tag - GTTTAA

Protein Sequence:

>RG214806 representing NM_033393
 Red=Cloning site Green=Tags(s)

MHVMNCVSLVSDKENGNIATAPGFMIGQTPPPAPPPPPPPPPSPPCSCSREECPSPPPPPPPLPGEP
 PIPPPPPGLPPTTHMNGYSHLGKKRMRSFFWKTIPPEEQVRGKTNIWTLAARQEHYQIDTKTIEELFGQ
 QEDTTKSSLPRGRRLNSSFREAREEITILDARSMNIGIFLKQFKKSPRSIVEDIHQKSEHYGSETLR
 EFLKFLPESEEVKLLKAFSGDVSLSLADSFYGLIQVPNYSRLIEAMVLKKEFLPSCSSLYTDITVLR
 AIKELMSCEELHSLHLVLQAGNIMNAGGYAGNAVGFKLSLLKLADTKANKPGMNLHFVAQEAQKDDT
 ILLNFSEKLHHVQKTARLSLENTEAELHLLFVRTKSLKENIQRDGELCQQMEDFLQFAIEKLRELECWKQ
 ELQDEAYTLIDFFCEDKKTMLDECFQIFRDFCTKFNKAVKDNHDREAQELRQLRQLKEQEQQRSWATG
 ELGAFGRSSSENDVELLTKKGAEGLLPFLHPRPISPPSPSYRPPNTRRSRLSLGPSADRELLTFLESSTG
 SPEEPNKFHSLPRSSPRQARPTIACLEPAEVRHQDSSF AHKPQASGGQEEAPNPPSAQHQLAAAQPENH
 ASAFPRAFCQGVSVLRKRYSEPVSLGSAQSPPLSPLALGIKEHELVTGLAQFNLQGSQGMETSQTLSD
 FSPMELESVGHGPGQSLASSSSLTPMGRDALGSLSPALEDGKAAPDEPGSAALGSVSSDPENKDPRL
 FCI SDTDCSL TLDCSEGTDSRPRGGDPEEGEGDGSMSGSGVEMGDSQVSSNPTSSPPGEAPAPVSVDS
 EPSCKGGLPRDKPTKRKDVVAPKRGSLKEASPGASKPGSARRSQGAVAKSVRTLTAENESMRKVMPITK
 SSRGAGWRRPELSSRGPSONPPSSTDTVWSRQNSVRRASTGAEQRLPRGSSGSSSTRPGRDVPLOPRGS
 FKKPSAKPLRNLPRQKPEENKTCRAHSEGPESPKPEPKTPSVSPVHELPRVPSFARNTVASSSRMRTD
 LPPVAKAPGITRTVSQRQLRVKGDPEDAAPKDSSTLRRASSARAPKKRPESAEGPSANTEAPLKARGAGE
 RASLRKDSRRTLGRILNPLRK

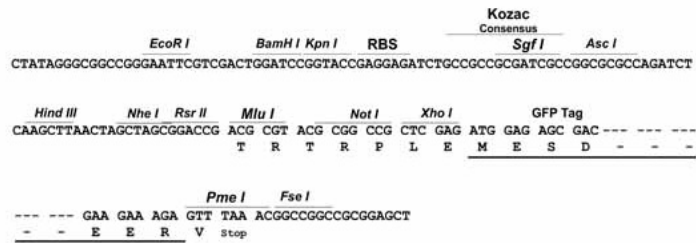
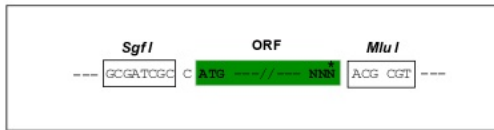
TRTRPLE - GFP Tag - V

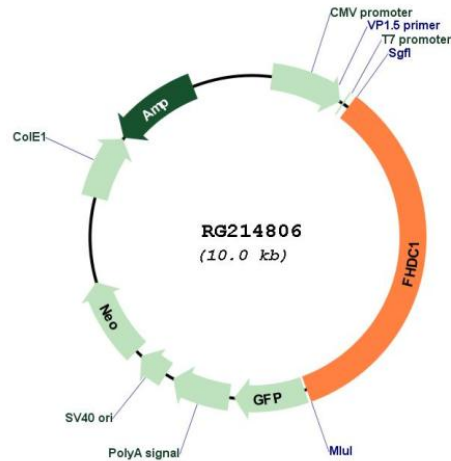
Restriction Sites:

SgfI-MluI

Cloning Scheme:

Cloning sites used for ORF Shuttling:



Plasmid Map:


ACCN: NM_033393

ORF Size: 3429 bp

OTI Disclaimer: The molecular sequence of this clone aligns with the gene accession number as a point of reference only. However, individual transcript sequences of the same gene can differ through naturally occurring variations (e.g. polymorphisms), each with its own valid existence. This clone is substantially in agreement with the reference, but a complete review of all prevailing variants is recommended prior to use. [More info](#)

OTI Annotation: This clone was engineered to express the complete ORF with an expression tag. Expression varies depending on the nature of the gene.

Components: The ORF clone is ion-exchange column purified and shipped in a 2D barcoded Matrix tube containing 10ug of transfection-ready, dried plasmid DNA (reconstitute with 100 ul of water).

Reconstitution Method:

1. Centrifuge at 5,000xg for 5min.
2. Carefully open the tube and add 100ul of sterile water to dissolve the DNA.
3. Close the tube and incubate for 10 minutes at room temperature.
4. Briefly vortex the tube and then do a quick spin (less than 5000xg) to concentrate the liquid at the bottom.
5. Store the suspended plasmid at -20°C. The DNA is stable for at least one year from date of shipping when stored at -20°C.

RefSeq: [NM_033393.1](#), [NP_203751.1](#)

RefSeq Size: 6470 bp

RefSeq ORF: 3432 bp

Locus ID: 85462

UniProt ID: [Q9C0D6](#)

Cytogenetics: 4q31.3

Gene Summary:

Microtubule-associated formin which regulates both actin and microtubule dynamics. Induces microtubule acetylation and stabilization and actin stress fiber formation (PubMed:18815276). Regulates Golgi ribbon formation (PubMed:26564798). Required for normal cilia assembly. Early in cilia assembly, may assist in the maturation and positioning of the centrosome/basal body, and once cilia assembly has initiated, may also promote cilia elongation by inhibiting disassembly (PubMed:29742020).[UniProtKB/Swiss-Prot Function]